



Nakamura SC-100X² (Upper Turret)

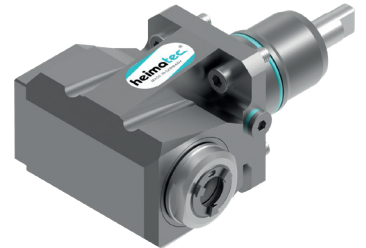
Axial drilling and milling head

| Part number | Tool adaption | Gear ratio | Rotation max [1/min] | Coolant | Pressure max [bar] |
|--------------|-----------------|------------|----------------------|---------|--------------------|
| 8 010 44 056 | ER 20 A - u-tec | 1:1 | 6,000 | IC/Ext | 25 |
| 8 010 44 078 | ER 20 A - u-tec | 1:1 | 8,000 | Ext | |
| 8 010 45 160 | ER 25 A - u-tec | 1:1 | 8,000 | Ext | |
| 8 010 45 191 | ER 25 A - u-tec | 1:1 | 8,000 | Ext | |
| 8 010 45 192 | ER 25 A - u-tec | 1:1 | 8,000 | IC/Ext | 25 |
| 8 010 45 194 | ER 25 A - u-tec | 1:1 | 10,000 | IC/Ext | 70 |



Radial drilling and milling head

| Part number | Tool adaption | Gear ratio | Rotation max [1/min] | Coolant | Pressure max [bar] |
|--------------|-----------------|------------|----------------------|---------|--------------------|
| 8 030 44 050 | ER 20 A - u-tec | 1:1 | 6,000 | IC/Ext | 140 |
| 8 030 44 058 | ER 20 A - u-tec | 1:1 | 6,000 | Ext | |
| 8 030 45 540 | ER 25 A - u-tec | 1:1 | 8,000 | Ext | |
| 8 030 45 541 | ER 25 A - u-tec | 1:1 | 8,000 | IC/Ext | 140 |
| 8 039 44 075 | ER 20 A - u-tec | 1:1 | 8,000 | Ext | |



Universal head ± 90° adjustable

| Part number | Tool adaption | Gear ratio | Rotation max [1/min] | Coolant |
|--------------|---------------|------------|----------------------|---------|
| 8 040 44 031 | ER 16 | 1:1 | 6,000 | Ext |
| 8 043 44 001 | ER 16 | 1:1 | 6,000 | Ext |



heimatec.com/product-search

Questions?
Contact us!
+49 7843 9466 0
info@heimatec.de



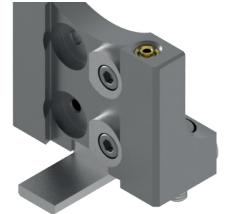
Nakamura SC-100X²

UPPER TURRET

Cut-off holder

| Part number | Tool adaption | Coolant |
|--------------|------------------|---------|
| 8 224 12 008 | Clampshaft SH 26 | Ext |
| 8 224 12 009 | Clampshaft SH 26 | Ext |
| 8 224 13 006 | Clampshaft SH 32 | Ext |
| 8 224 13 012 | Clampshaft SH 32 | Ext |

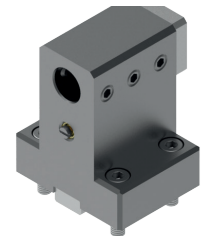
| Article number | Tool adaption | Coolant |
|----------------|---------------|---------|
| 8 224 11 013 | sq. 20 | Ext |
| 8 225 11 006 | sq. 20 | Ext |
| 8 225 11 007 | sq. 20 | Ext |



Boring bar holder

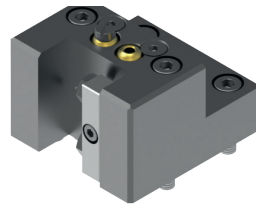
| Part number | Tool adaption | Coolant |
|--------------|--------------------|---------|
| 8 240 18 052 | Ø 1 1/4" (31,75mm) | IC/Ext |
| 8 240 16 007 | Ø 20 | IC/Ext |
| 8 240 17 020 | Ø 25 | IC/Ext |

| Article number | Tool adaption | Coolant |
|----------------|---------------|---------|
| 8 240 17 086 | Ø 25 | IC/Ext |
| 8 240 18 025 | Ø 32 | IC/Ext |
| 8 240 18 076 | Ø 32 | IC/Ext |



Universal turning / combi multiple holder

| Part number | Tool adaption | Coolant |
|--------------|------------------------------------|---------|
| 8 224 14 007 | 2x sq. 20 | Ext |
| 8 224 14 008 | 2x sq. 3/4" (19,05mm) | Ext |
| 8 251 14 013 | 4x sq. 20 2x sq. 20 - 15° | Ext |
| 8 251 14 023 | 4x sq. 3/4" 2x sq. 3/4" - 15° | Ext |



Double turning holder

| Part number | Tool adaption | Coolant |
|--------------|-----------------------|---------|
| 8 251 11 004 | 2x sq. 20 | Ext |
| 8 251 11 008 | 2x sq. 3/4" (19,05mm) | Ext |



Facing holder

| Part number | Tool adaption | Coolant |
|--------------|---------------|---------|
| 8 244 11 003 | sq. 20 | Ext |



LOWER TURRET

| Part number | Name | Tool adaption | Coolant |
|--------------|------------------------------|--------------------------------|---------|
| 8 224 14 021 | Universal turning holder | sq. 20 | Ext |
| 8 259 14 006 | Combimultiple turning holder | 2x sq. 20 2x sq. 20 ± 30° | Ext |



heimatec.com/product-search

**Questions?
Contact us!**
+49 7843 9466 0
info@heimatec.de