

**TOPSELLER -**  
many more available!

Live Tools

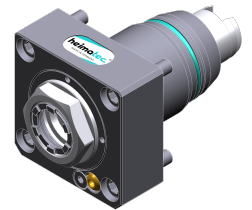
**heimatec**®

# Tsugami

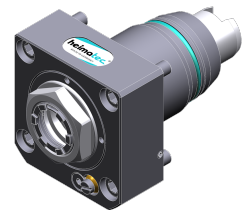
## M06-M08 D/SD/SY - BMT 65

Part-#	Tool adaption	Rotation max [1/min]	Gear ratio	Coolant	Pressure max.	Center distance
<b>Axial drilling and milling head</b>						
8 010 66 260	<b>ER 32 A - u-tec</b>	12.000	1:1	EXT	--	--
8 010 66 261	<b>ER 32 A - u-tec</b>	12.000	1:1	IC/Ext	100 bar	--
<b>Axial drilling and milling head, offset</b>						
8 019 66 051	<b>ER 32 A - u-tec</b>	6.000	1:1	EXT	--	--
8 019 66 052	<b>ER 32 A - u-tec</b>	6.000	1:1	IC/Ext	140 bar	--
<b>Radial drilling and milling head</b>						
8 030 66 241	<b>ER 32 A - u-tec</b>	12.000	1:1	IC/Ext	140 bar	<b>85 mm</b>
8 030 66 254	<b>ER 32 A - u-tec</b>	12.000	1:1	EXT	--	<b>85 mm</b>
<b>Universal head</b>						
8 040 64 023	<b>ER 20 A - u-tec</b>	10.000	1:1	EXT	--	<b>60 mm</b>
8 040 64 024	<b>ER 20 A - u-tec</b>	10.000	1:1	IC/Ext	140 bar	<b>60 mm</b>
<b>Universal head, offset</b>						
8 043 65 018	<b>ER 25 A - u-tec</b>	6.000	1:1	EXT	--	<b>60 mm</b>

Illustrations similar.



8 010 66 260



8 010 66 261



8 030 66 241



8 030 66 254



8 040 64 023

**TOPSELLER -**  
many more available!

Static Tools

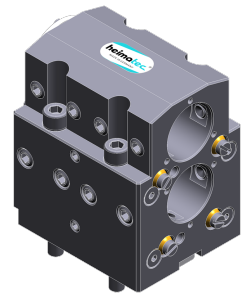
**heimatec**®

# Tsugami

## M06-M08 D/SD/SY - BMT 65

Part-#	Tool adaption	Coolant	Pressure max.
<b>Universal turning holder</b>			
8 224 15 032	<b>Sq. 25</b>	EXT	--
<b>Combi facing holder</b>			
8 244 15 014	<b>Sq. 25</b>	EXT	--
<b>Double turning holder</b>			
8 251 15 024	<b>Sq. 25</b>	EXT	--
<b>Double boring bar holder</b>			
8 253 19 004	<b>Ø 40</b>	IC/Ext	100 bar
<b>Cut-off holder, height adjustable</b>			
8 320 13 030	<b>Clampshaft SH 32</b>	IC/Ext	70 bar

*Illustrations similar.*



8 253 19 004