

Citizen
Cincom A20



High-tech from heimatec - heimatec - Tools and systems for productive turning and milling

heimatec belongs to the international technology and quality leaders for precision tools and specializes in the development and production of high-precision static and live tools for all CNC lathes, CNC turn-/mill machines and CNC machining centers.

The range of products* spans from static BMT and VDI tool holders, live tools up to highly complex customer-specific individual solutions. heimatec, headquartered in Renchen, has a own subsidiary in Asia and India and numerous representatives as well as trading partners all over the world.

*OUR PRODCUTS

Static tool holders

Live tool units

Precision tools

Tools for turning and machining centres

Tools for swiss type lathes

Tool changing and uick-change systems





Tool systems for gear production


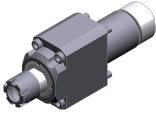
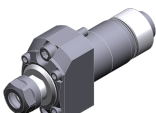

Digital tool management


This catalogue, including all its parts, is protected by copyright. Any use outside the restricted limitations of the Copyright Act without the consent of heimatec is inadmissible and liable to prosecution. This applies in particular to duplication, translation, microfilming and storage and processing in electronic systems.

heimatec GmbH reserves the right to make technical changes at any time without giving prior notice. This applies in particular to adjustments at any time to meet new or changed international standards, or in case of further developments of our products or manufacturing processes.

The current version of our General Terms and Conditions can be found on our website.

Part-#	Name	
3 010 23 000	Axial drilling and milling head ER 11	
	Citizen Part-#:	MSC507
	Weight [kg]:	0.360
	Tool drive:	Gear
	Shank size [mm]:	25.00
	Shank type:	BMT
	Tool adaption:	ER 11
	Gear ratio [i]:	1:1
	Torque max [Nm]:	10
	Rotation max [1/min]:	10000
	Rotating direction:	same
	Coolant:	no
	Please note:	stronger bearing
3 010 23 006	Axial drilling and milling head ER 11 IC	
	Weight [kg]:	0.500
	Tool drive:	Gear
	Shank size [mm]:	25.00
	Shank type:	BMT
	Tool adaption:	ER 11
	Gear ratio [i]:	1:1
	Torque max [Nm]:	10
	Rotation max [1/min]:	10000
	Rotating direction:	same
	Coolant:	IC
	Pressure max [bar]:	100
	Please note:	stronger bearing
3 010 24 004	Axial drilling and milling head ER 16	
	Tool drive:	Gear
	Shank size [mm]:	25.00
	Shank type:	BMT
	Tool adaption:	ER 16
	Gear ratio [i]:	1:1
	Torque max [Nm]:	10
	Rotation max [1/min]:	10000
	Rotating direction:	same
	Coolant:	no
3 010 34 000	Axial drilling and milling head ER 16 M	
	Citizen Part-#:	GSC1310
	Weight [kg]:	0.600
	Tool drive:	Gear
	Shank size [mm]:	31.00
	Shank type:	BMT
	Tool adaption:	ER 16 M
	Gear ratio [i]:	1:1
	Torque max [Nm]:	20
	Rotation max [1/min]:	10000
	Rotating direction:	same
	Coolant:	no
	Please note:	stronger bearing, dimension turret face to front edge

Part-#	Name	
	3 010 34 004	Axial drilling and milling head ER 16 M
	Weight [kg]:	0.790
	Tool drive:	Gear
	Shank size [mm]:	31.00
	Shank type:	BMT
	Tool adaption:	ER 16 M
	Gear ratio [i]:	1:1
	Torque max [Nm]:	20
	Rotation max [1/min]:	8000
	Rotating direction:	same
Coolant:	no	
Please note:	stronger bearing, dimension turret face to front edge	
	3 010 34 006	Axial drilling and milling head ER 16 M IC
	Weight [kg]:	0.940
	Tool drive:	Gear
	Shank size [mm]:	31.00
	Shank type:	BMT
	Tool adaption:	ER 16 M
	Gear ratio [i]:	1:1
	Torque max [Nm]:	20
	Rotation max [1/min]:	6000
	Rotating direction:	same
Coolant:	IC	
Pressure max [bar]:	100	
Please note:	stronger bearing, dimension turret face to front edge	
	3 013 23 000	Axial drilling and milling head ER 11
	Weight [kg]:	0.360
	Tool drive:	Gear
	Shank size [mm]:	25.00
	Shank type:	BMT
	Tool adaption:	ER 11
	Gear ratio [i]:	1:4
	Torque max [Nm]:	2,5
	Rotation max [1/min]:	48000
	Rotating direction:	same
Coolant:	no	
	3 013 33 000	Axial drilling and milling head ER 11
	Weight [kg]:	0.560
	Tool drive:	Gear
	Shank size [mm]:	31.00
	Shank type:	BMT
	Tool adaption:	ER 11
	Gear ratio [i]:	1:4
	Torque max [Nm]:	2,5
	Rotation max [1/min]:	48000
	Rotating direction:	same
Coolant:	no	

Part-#	Name	
3 013 33 002	Axial drilling and milling head ER 11	
		
	Weight [kg]:	0.620
	Tool drive:	Gear
	Shank size [mm]:	31.00
	Shank type:	BMT
	Tool adaption:	ER 11
	Gear ratio [i]:	1:4
	Torque max [Nm]:	2,5
	Rotation max [1/min]:	48000
	Rotating direction:	same
	Coolant:	no
3 013 33 005	Axial drilling and milling head ER 11	
		
	Weight [kg]:	0.800
	Tool drive:	Gear
	Shank size [mm]:	31.00
	Shank type:	BMT
	Tool adaption:	ER 11
	Gear ratio [i]:	1:4
	Torque max [Nm]:	2,5
	Rotation max [1/min]:	48000
	Rotating direction:	same
	Coolant:	no
3 037 23 000	Woodruff keycutter ER 11	
		
	Citizen Part-#:	GSS1530
	Weight [kg]:	2.260
	Tool drive:	Gear
	Shank size [mm]:	25.00
	Shank type:	BMT
	Tool adaption:	ER 11
	Gear ratio [i]:	1,667:1
	Torque max [Nm]:	16
	Rotation max [1/min]:	5400
	Rotating direction:	same
	Coolant:	no
	Please note:	stronger bearing; incl. arbor
	Center distance [mm]:	58
3 037 30 000	Woodruff keycutter arbor 5	
		
	Version:	± 5° turnable
	Tool drive:	Gear
	Shank size [mm]:	31.00
	Shank type:	BMT
	Tool adaption:	Arbor 5
	Gear ratio [i]:	1:1
	Torque max [Nm]:	8
	Rotation max [1/min]:	8000
	Rotating direction:	opposite
	Coolant:	no
	Please note:	Check applicability! neighbor stations
	Center distance [mm]:	64

Part-#	Name
--------	------

3 053 33 000



Multispindle radial head ER 11

Citizen Part-#: BSE607
 Version: 3-spindles
 Tool drive: Gear
 Shank size [mm]: 31.00
 Shank type: BMT
 Tool adaption: ER 11
 ER 11
 ER 11
 Gear ratio [i]: 1:1
 Torque max [Nm]: 10
 Rotation max [1/min]: 12000
 Rotating direction: same/opposite
 Coolant: no
 Please note: stronger bearing
 Center distance [mm]: 76,5/106,5/136,5

3 059 33 002



Multispindle radial head ER 11

Citizen Part-#: BSE707
 Version: 3 x double spindle
 Tool drive: Gear
 Shank size [mm]: 31.00
 Shank type: BMT
 Tool adaption: ER 11
 ER 11
 ER 11
 ER 11
 ER 11
 ER 11
 Gear ratio [i]: 1:1
 Torque max [Nm]: 10
 Rotation max [1/min]: 12000
 Rotating direction: same/opposite
 Coolant: no
 Please note: stronger bearing
 Center distance [mm]: 76,5/106,5/136,5

3 068 34 001



Radial whirling unit HW 46

Tool drive: Gear
 Shank size [mm]: 31.00
 Shank type: BMT
 Tool adaption: HW 46
 Gear ratio [i]: 1:1
 Torque max [Nm]: 16
 Rotation max [1/min]: 8000
 Rotating direction: same
 Coolant: no
 Please note: Check applicability; without cutting inserts carrier
 Center distance [mm]: 89,5

Part-#	Name
--------	------

3 214 34 000

Turning holder sq. 12



Weight [kg]: 0.420
Shank size [mm]: 31.00
Shank type: BMT
Tool adaption: Sq. 12
Coolant: no

3 253 25 001

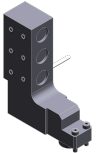
Multiple boring bar holder Ø 3/4"



Citizen Part-#: GDF1302
Notation: offset
Shank size [mm]: 25.00
Shank type: BMT
Tool adaption: Ø 3/4" (19,05mm)
Ø 3/4" (19,05mm)
Ø 3/4" (19,05mm)
Coolant: no
Center distance [mm]: 62/ 85/108

3 253 25 002

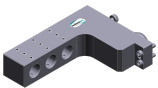
Multiple boring bar holder Ø 3/4"



Citizen Part-#: GDF1303
Weight [kg]: 1.700
Notation: offset
Shank size [mm]: 25.00
Shank type: BMT
Tool adaption: Ø 3/4" (19,05mm)
Ø 3/4" (19,05mm)
Ø 3/4" (19,05mm)
Coolant: no
Center distance [mm]: 60,5/ 90,5/120,5

3 253 35 000

Multiple boring bar holder Ø 3/4"



Citizen Part-#: GDF1207
Weight [kg]: 2.340
Notation: offset
Shank size [mm]: 31.00
Shank type: BMT
Tool adaption: Ø 3/4" (19,05mm)
Ø 3/4" (19,05mm)
Ø 3/4" (19,05mm)
Coolant: no
Center distance [mm]: 76,5/106,5/136,5

3 732 21 000

Reducing sleeve 25,4/ 4/130






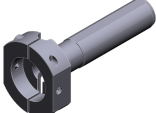
Citizen Part-#: ABS104
Shank size [mm]: 25.40
Tool adaption: Ø 4
Please note: Total length 130,0 mm

Part-#	Name	
3 732 23 000	Reducing sleeve 25,4/ 8/130	
	Citizen Part-#:	ABS108
	Weight [kg]:	0.430
	Shank size [mm]:	25.40
	Tool adaption:	Ø 8
	Please note:	Total length 130,0 mm
3 732 23 001	Reducing sleeve 25,4/10/100	
	Citizen Part-#:	ABS110
	Weight [kg]:	0.327
	Shank size [mm]:	25.40
	Tool adaption:	Ø 10
	Please note:	Total length 100,0 mm
3 732 25 000	Adapter bushing 25/19,05/36	
	Citizen Part-#:	SAU819
	Weight [kg]:	0.067
	Version:	short S
	Shank size [mm]:	25.00
	Tool adaption:	Ø 19,05
	Please note:	Total length 36,0 mm
3 776 13 000	Collet chuck Ø 19,05/ER 11	
	Citizen Part-#:	BDS507
	Weight [kg]:	0.110
	Shank size [mm]:	19.05
	Tool adaption:	ER 11
	Coolant:	no
	Please note:	Total length 61,3 mm
3 776 13 001	Collet chuck Ø 19,05/ER 11	
	Citizen Part-#:	BDS607
	Weight [kg]:	0.120
	Version:	long L
	Shank size [mm]:	19.05
	Tool adaption:	ER 11
	Coolant:	no
	Please note:	Total length 73,3 mm
3 776 13 002	Collet chuck Ø 19,05/ER 11	
	Citizen Part-#:	BDS707
	Weight [kg]:	0.090
	Version:	short S
	Shank size [mm]:	19.05
	Tool adaption:	ER 11
	Coolant:	no
	Please note:	Total length 54,3 mm

Part-#	Name	
3 776 13 003	Collet chuck Ø 19,05/ER 11	
	Citizen Part-#:	VDS506
	Weight [kg]:	0.142
	Version:	long XL
	Shank size [mm]:	19.05
	Tool adaption:	ER 11
	Coolant:	no
	Please note:	Total length 84,8 mm
3 776 13 004	Doppel-collet chuck Ø 19,05/ER 11	
	Citizen Part-#:	HDS5406
	Weight [kg]:	0.070
	Version:	short S
	Shank size [mm]:	19.05
	Tool adaption:	ER 11
		ER 11
	Coolant:	no
	Please note:	Total length 65,0 mm
3 776 13 005	Doppel-collet chuck Ø 19,05/ER 11	
	Citizen Part-#:	HDS5506
	Weight [kg]:	0.100
	Version:	long L
	Shank size [mm]:	19.05
	Tool adaption:	ER 11
		ER 11
	Coolant:	no
	Please note:	Total length 85,0 mm
3 776 13 006	Doppel-collet chuck Ø 19,05/ER 11	
	Citizen Part-#:	HDS5706
	Version:	long XL
	Shank size [mm]:	19.05
	Tool adaption:	ER 11
		ER 11
	Coolant:	no
	Please note:	Total length 110,0 mm
3 776 14 000	Collet chuck Ø 19,05/ER 16	
	Citizen Part-#:	BDS508
	Weight [kg]:	0.112
	Shank size [mm]:	19.05
	Tool adaption:	ER 16
	Coolant:	no
	Please note:	Total length 65,3 mm
3 776 14 001	Collet chuck Ø 19,05/ER 16	
	Citizen Part-#:	BDS610
	Weight [kg]:	0.120
	Version:	long L
	Shank size [mm]:	19.05
	Tool adaption:	ER 16
	Coolant:	no
	Please note:	Total length 80,3 mm

Part-#	Name	
3 776 14 003	Collet chuck Ø 19,05/ER 16	
	Citizen Part-#:	VDS110
	Weight [kg]:	0.140
	Version:	long XL
	Shank size [mm]:	19.05
	Tool adaption:	ER 16
	Coolant:	no
	Please note:	Total length 90,0 mm
3 776 23 000	Collet chuck Ø 25,4/ER 11	
	Citizen Part-#:	ADS707
	Shank size [mm]:	25.40
	Tool adaption:	ER 11
	Coolant:	no
	Please note:	Total length 91,0 mm
3 776 24 000	Collet chuck Ø 25,4/ER 16 M	
	Citizen Part-#:	ADS810
	Version:	short S
	Shank size [mm]:	25.40
	Tool adaption:	ER 16 M
	Coolant:	no
	Please note:	Total length 61,0 mm
3 776 24 001	Collet chuck Ø 25,4/ER 16 M	
	Citizen Part-#:	ADS710
	Weight [kg]:	0.300
	Version:	long L
	Shank size [mm]:	25.40
	Tool adaption:	ER 16 M
	Coolant:	no
	Please note:	Total length 97,0 mm
3 776 24 002	Collet chuck Ø 25,4/ER 16	
	Citizen Part-#:	ADS110
	Shank size [mm]:	25.40
	Tool adaption:	ER 16
	Coolant:	no
	Please note:	Total length 95,0 mm
3 776 24 004	Collet chuck Ø 25,4/ER 16	
	Citizen Part-#:	ADS410
	Weight [kg]:	0.230
	Version:	short S
	Shank size [mm]:	25.40
	Tool adaption:	ER 16
	Coolant:	no
	Please note:	Total length 85,0 mm

Part-#	Name	
3 776 24 007	Doppel-collet chuck Ø 25,4/ER 16 M	
	Citizen Part-#:	ADS1110
	Version:	short S
	Shank size [mm]:	25.40
	Tool adaption:	ER 16 M ER 16 M
	Coolant:	no
	Please note:	Total length 85, 0 mm
3 776 24 009	Doppel-collet chuck Ø 25,4/ER 16 M	
	Citizen Part-#:	ADS1410
	Version:	long L
	Shank size [mm]:	25.40
	Tool adaption:	ER 16 M ER 16 M
	Coolant:	no
	Please note:	Total length 118,0 mm
3 778 13 000	Tapping chuck Ø 19,05/ER 11	
	Citizen Part-#:	BNS407
	Notation:	with length compensation 8 mm
	Version:	short S
	Shank size [mm]:	19.05
	Tool adaption:	ER 11
	Coolant:	no
	Please note:	incl. per 1x Schneideisenaufnahme ø16x5 / 86,0 mm and
3 778 13 001	Tapping chuck Ø 19,05/ER 11	
	Citizen Part-#:	VNS406
	Notation:	with length compensation 8 mm
	Version:	long L
	Shank size [mm]:	19.05
	Tool adaption:	ER 11
	Coolant:	no
	Please note:	incl. per 1x Schneideisenaufnahme ø16x5 / 119,5 mm and
3 778 23 000	Tapping chuck Ø 25,4/ER 11	
	Citizen Part-#:	ATS210
	Notation:	with length compensation 8 mm
	Version:	short S
	Shank size [mm]:	25.40
	Tool adaption:	ER 11
	Coolant:	no
	Please note:	Total length 65,0 mm
3 778 23 001	Tapping chuck Ø 25,4/ER 11	
	Citizen Part-#:	ATS307
	Notation:	with length compensation 8 mm
	Version:	long L
	Shank size [mm]:	25.40
	Tool adaption:	ER 11
	Coolant:	no
	Please note:	Total length 93,0 mm

Part-#	Name	
3 778 24 000	Tapping chuck Ø 25,4/ER 16	
	Citizen Part-#:	ATS112
	Weight [kg]:	0.320
	Notation:	with length compensation 8 mm
	Shank size [mm]:	25.40
	Tool adaption:	ER 16
	Coolant:	no
	Please note:	Total length 110,0 mm
3 778 26 001	Die chuck Ø 25,4/ Ø 20,0x 7,0	
	Citizen Part-#:	AUS106
	Shank size [mm]:	25.40
	Tool adaption:	Ø 20,0x 7,0
	Coolant:	no
	Please note:	Total length 130,0 mm
3 778 27 000	Die chuck Ø 25,4/ Ø 25,0x 9,0	
	Citizen Part-#:	AUS110
	Shank size [mm]:	25.40
	Tool adaption:	Ø 25,0x 9,0
	Coolant:	no
	Please note:	Total length 130,0 mm
3 778 28 000	Die chuck Ø 25,4/ Ø 38,0x13,0	
	Citizen Part-#:	AUS112
	Shank size [mm]:	25.40
	Tool adaption:	Ø 38,0x13,0
	Coolant:	no
	Please note:	Total length 130,0 mm





heimatec.u-tec®

heimatec.com

Products / Tool change systems /
u-tec® Tool-changing system



versions see catalog



heimatec.easy-quick

heimatec.com

Products / Tool change systems /
easy-quick HT quick-changing system



versions see catalog



heimatec.Capto™

heimatec.com

Products / Tool change systems /
heimatec.Capto™ quick-changing system



versions see catalog



heimatec.accessories

heimatec.com

Products / Accessories



versions see catalog





● heimatec overseas branches

○ global representations of heimatec

heimatec[®]

heimatec GmbH
Präzisionswerkzeuge
Carl-Benz-Str. 4
77871 Renchen
Germany

T +49 7843 9466 0
www.heimatec.com
info@heimatec.com

Please find the contact details of our worldwide trading partners on our website:
<https://heimatec.com/business-partners>