

**TOPSELLER -**  
many more available!

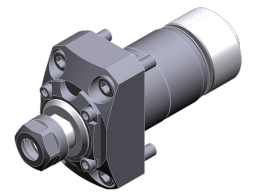
Live Tools

**heimatec**®

# Citizen Cincom D25

Part-#	Tool adaption	Rotation max [1/min]	Gear ratio	Coolant	Pressure max.	Center distance
<b>Axial drilling and milling head</b>						
3 013 33 000	<b>ER 11</b>	48.000	1:4	no	--	--
3 013 33 002	<b>ER 11</b>	48.000	1:4	no	--	--
3 013 33 005	<b>ER 11</b>	48.000	1:4	no	--	--
3 010 34 000	<b>ER 16 M</b>	10.000	1:1	no	--	--
<i>GSC1310</i>						
3 010 34 004	<b>ER 16 M</b>	8.000	1:1	no	--	--
3 010 34 006	<b>ER 16 M</b>	6.000	1:1	IC	100 bar	--
<b>Multispindle radial head</b>						
3 053 33 000	<b>ER 11</b>	12.000	1:1	no	--	--
<i>BSE607</i>						
3 059 33 002	<b>ER 11</b>	12.000	1:1	no	--	--
<i>BSE707</i>						
3 053 34 000	<b>ER 16 M</b>	8.000	1:1	no	--	--
<i>GSE1610</i>						
3 053 34 005	<b>ER 16 M</b>	8.000	1:1	IC	140 bar	--
<b>Radial whirling unit</b>						
3 068 34 001	<b>HW 46</b>	8.000	1:1	no	--	<b>89,5 mm</b>

Illustrations similar.



3 013 33 000



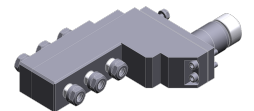
3 013 33 002



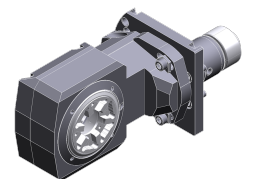
3 013 33 005



3 053 33 000



3 059 33 002



3 068 34 001

**TOPSELLER -**  
many more available!

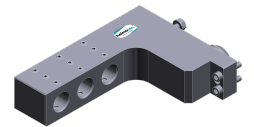
Static Tools

**heimatec**®

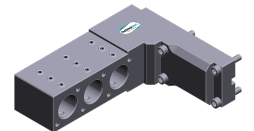
# Citizen Cincom D25

Part-#	Tool adaption	Coolant
<b>Multiple boring bar holder</b>		
3 253 37 001 <i>GDF1601</i>	<b>Ø 1" (25,4mm)</b>	no
3 253 37 008	<b>Ø 1" (25,4mm)</b>	no
3 253 35 000 <i>GDF1207</i>	<b>Ø 3/4" (19,05mm)</b>	no

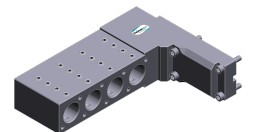
*Illustrations similar.*



3 253 35 000



3 253 37 001



3 253 37 008