

Citizen  
**Cincom D25**



# High-tech from heimatec - heimatec - Tools and systems for productive turning and milling

heimatec belongs to the international technology and quality leaders for precision tools and specializes in the development and production of high-precision static and live tools for all CNC lathes, CNC turn-/mill machines and CNC machining centers.

The range of products\* spans from static BMT and VDI tool holders, live tools up to highly complex customer-specific individual solutions. heimatec, headquartered in Renchen, has a own subsidiary in Asia and India and numerous representatives as well as trading partners all over the world.

## \*OUR PRODCUTS

Static tool holders

Live tool units

Precision tools

Tools for turning and machining centres

Tools for swiss type lathes

Tool changing and uick-change systems

Tool systems for gear production

Digital tool management

This catalogue, including all its parts, is protected by copyright. Any use outside the restricted limitations of the Copyright Act without the consent of heimatec is inadmissible and liable to prosecution. This applies in particular to duplication, translation, microfilming and storage and processing in electronic systems.

**heimatec GmbH** reserves the right to make technical changes at any time without giving prior notice. This applies in particular to adjustments at any time to meet new or changed international standards, or in case of further developments of our products or manufacturing processes.

The current version of our General Terms and Conditions can be found on our website.

Part-#	Name
--------	------

**3 010 34 000**

**Axial drilling and milling head ER 16 M**



Citizen Part-#:	GSC1310
Weight [kg]:	0.600
Tool drive:	Gear
Shank size [mm]:	31.00
Shank type:	BMT
Tool adaption:	ER 16 M
Gear ratio [i]:	1:1
Torque max [Nm]:	20
Rotation max [1/min]:	10000
Rotating direction:	same
Coolant:	no
Please note:	stronger bearing, dimension turret face to front edge

**3 010 34 004**

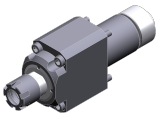
**Axial drilling and milling head ER 16 M**



Weight [kg]:	0.790
Tool drive:	Gear
Shank size [mm]:	31.00
Shank type:	BMT
Tool adaption:	ER 16 M
Gear ratio [i]:	1:1
Torque max [Nm]:	20
Rotation max [1/min]:	8000
Rotating direction:	same
Coolant:	no
Please note:	stronger bearing, dimension turret face to front edge

**3 010 34 006**

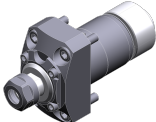
**Axial drilling and milling head ER 16 M IC**






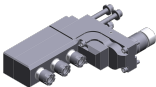
Weight [kg]:	0.940
Tool drive:	Gear
Shank size [mm]:	31.00
Shank type:	BMT
Tool adaption:	ER 16 M
Gear ratio [i]:	1:1
Torque max [Nm]:	20
Rotation max [1/min]:	6000
Rotating direction:	same
Coolant:	IC
Pressure max [bar]:	100
Please note:	stronger bearing, dimension turret face to front edge

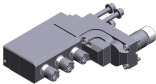


**3 013 33 000**

**Axial drilling and milling head ER 11**



Weight [kg]:	0.560
Tool drive:	Gear
Shank size [mm]:	31.00
Shank type:	BMT
Tool adaption:	ER 11
Gear ratio [i]:	1:4
Torque max [Nm]:	2,5
Rotation max [1/min]:	48000
Rotating direction:	same
Coolant:	no

Part-#	Name	
<b>3 013 33 002</b>	<b>Axial drilling and milling head ER 11</b>	
	Weight [kg]:	0.620
	Tool drive:	Gear
	Shank size [mm]:	31.00
	Shank type:	BMT
	Tool adaption:	ER 11
	Gear ratio [i]:	1:4
	Torque max [Nm]:	2,5
	Rotation max [1/min]:	48000
	Rotating direction:	same
	Coolant:	no
<b>3 013 33 005</b>	<b>Axial drilling and milling head ER 11</b>	
	Weight [kg]:	0.800
	Tool drive:	Gear
	Shank size [mm]:	31.00
	Shank type:	BMT
	Tool adaption:	ER 11
	Gear ratio [i]:	1:4
	Torque max [Nm]:	2,5
	Rotation max [1/min]:	48000
	Rotating direction:	same
	Coolant:	no
<b>3 053 33 000</b>	<b>Multispindle radial head ER 11</b>	
	Citizen Part-#:	BSE607
	Version:	3-spindles
	Tool drive:	Gear
	Shank size [mm]:	31.00
	Shank type:	BMT
	Tool adaption:	ER 11
		ER 11
		ER 11
	Gear ratio [i]:	1:1
	Torque max [Nm]:	10
	Rotation max [1/min]:	12000
	Rotating direction:	same/opposite
	Coolant:	no
	Please note:	stronger bearing
	Center distance [mm]:	76,5/106,5/136,5
<b>3 053 34 000</b>	<b>Multispindle radial head ER 16 M</b>	
	Citizen Part-#:	GSE1610
	Weight [kg]:	4.720
	Notation:	90° adjustable
	Version:	3-spindles
	Tool drive:	Gear
	Shank size [mm]:	31.00
	Shank type:	BMT
	Tool adaption:	ER 16 M
		ER 16 M
		ER 16 M
	Gear ratio [i]:	1:1
	Torque max [Nm]:	12
	Rotation max [1/min]:	8000
	Rotating direction:	same/opposite

Part-#	Name	
	Coolant:	no
	Please note:	stronger bearing
	Center distance [mm]:	78/114/150
<b>3 053 34 005</b>	<b>Multispindle radial head ER 16 M IC</b>	
	Weight [kg]:	5.420
	Notation:	90° adjustable
	Version:	3-spindles
	Tool drive:	Gear
	Shank size [mm]:	31.00
	Shank type:	BMT
	Tool adaption:	ER 16 M ER 16 M ER 16 M
	Gear ratio [i]:	1:1
	Torque max [Nm]:	12
	Rotation max [1/min]:	8000
	Rotating direction:	same/opposite
	Coolant:	IC
	Pressure max [bar]:	140
	Please note:	stronger bearing; check applicability!
	Center distance [mm]:	78/114/150
<b>3 059 33 002</b>	<b>Multispindle radial head ER 11</b>	
	Citizen Part-#:	BSE707
	Version:	3 x double spindle
	Tool drive:	Gear
	Shank size [mm]:	31.00
	Shank type:	BMT
	Tool adaption:	ER 11 ER 11 ER 11 ER 11 ER 11 ER 11 ER 11
	Gear ratio [i]:	1:1
	Torque max [Nm]:	10
	Rotation max [1/min]:	12000
	Rotating direction:	same/opposite
	Coolant:	no
	Please note:	stronger bearing
	Center distance [mm]:	76,5/106,5/136,5
<b>3 068 34 001</b>	<b>Radial whirling unit HW 46</b>	
	Tool drive:	Gear
	Shank size [mm]:	31.00
	Shank type:	BMT
	Tool adaption:	HW 46
	Gear ratio [i]:	1:1
	Torque max [Nm]:	16
	Rotation max [1/min]:	8000
	Rotating direction:	same
	Coolant:	no
	Please note:	Check applicability; without cutting inserts carrier
	Center distance [mm]:	89,5

Part-#	Name	
<b>3 253 35 000</b>	<b>Multiple boring bar holder Ø 3/4"</b>	
	Citizen Part-#:	GDF1207
	Weight [kg]:	2.340
	Notation:	offset
	Shank size [mm]:	31.00
	Shank type:	BMT
	Tool adaption:	Ø 3/4" (19,05mm)
		Ø 3/4" (19,05mm)
		Ø 3/4" (19,05mm)
	Coolant:	no
	Center distance [mm]:	76,5/106,5/136,5
<b>3 253 37 001</b>	<b>Multiple boring bar holder Ø 1"</b>	
	Citizen Part-#:	GDF1601
	Weight [kg]:	3.600
	Notation:	offset
	Shank size [mm]:	31.00
	Shank type:	BMT
	Tool adaption:	Ø 1" (25,4mm)
		Ø 1" (25,4mm)
		Ø 1" (25,4mm)
	Coolant:	no
	Center distance [mm]:	78/114/150
<b>3 253 37 008</b>	<b>Multiple boring bar holder Ø 1"</b>	
	Weight [kg]:	5.120
	Notation:	offset
	Shank size [mm]:	31.00
	Shank type:	BMT
	Tool adaption:	Ø 1" (25,4mm)
		Ø 1" (25,4mm)
		Ø 1" (25,4mm)
		Ø 1" (25,4mm)
	Coolant:	no
	Center distance [mm]:	78/114/150/186

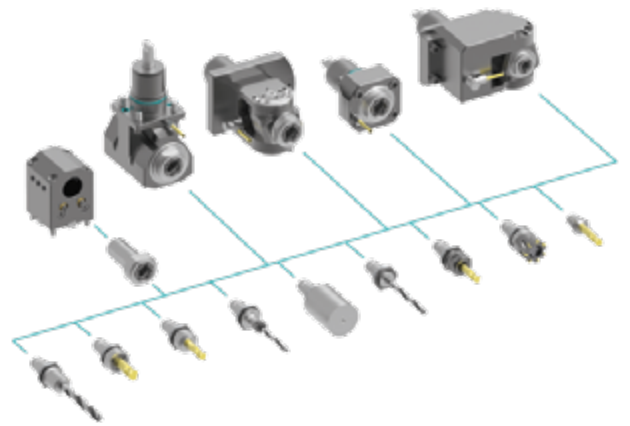
## heimatec.u-tec®

heimatec.com

Products / Tool change systems /  
u-tec® Tool-changing system



versions see catalog



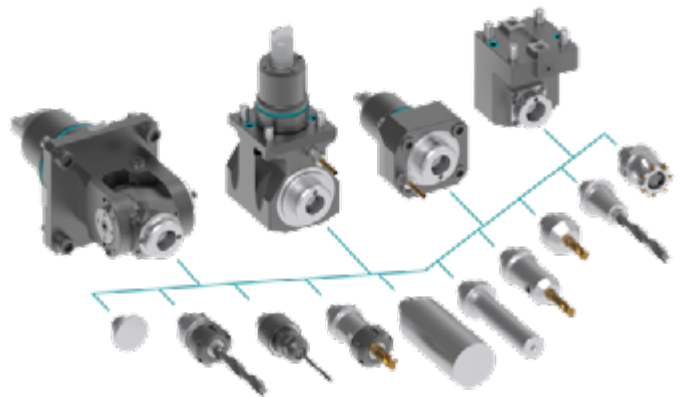
## heimatec.easy-quick

heimatec.com

Products / Tool change systems /  
easy-quick HT quick-changing system



versions see catalog



## heimatec.Capto™

heimatec.com

Products / Tool change systems /  
heimatec.Capto™ quick-changing system



versions see catalog



## heimatec.accessories

heimatec.com

Products / Accessories



versions see catalog





● heimatec overseas branches

○ global representations of heimatec

**heimatec**<sup>®</sup>

**heimatec GmbH**  
Präzisionswerkzeuge  
Carl-Benz-Str. 4  
77871 Renchen  
Germany

T +49 7843 9466 0  
[www.heimatec.com](http://www.heimatec.com)  
[info@heimatec.com](mailto:info@heimatec.com)

Please find the contact details of our worldwide trading partners on our website:  
<https://heimatec.com/business-partners>