

TOPSELLER -
many more available!

Live Tools

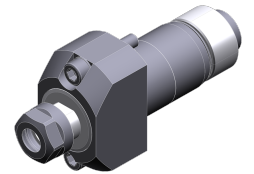
heimatec®

Citizen

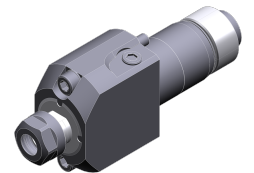
Cincom L(2)12

| Part-# | Tool adaption | Rotation max [1/min] | Gear ratio | Coolant | Pressure max. | Center distance |
|----------------------------------------|---------------|----------------------|------------|---------|---------------|-----------------|
| Axial drilling and milling head | | | | | | |
| 3 010 23 000 <i>MSC507</i> | ER 11 | 10.000 | 1:1 | no | -- | -- |
| 3 010 23 006 | ER 11 | 10.000 | 1:1 | IC | 100 bar | -- |
| Woodruff keycutter | | | | | | |
| 3 037 23 000 <i>GSS1530</i> | ER 11 | 5.400 | 1,667:1 | no | -- | 58 mm |
| 3 037 23 002 <i>GSC1507</i> | ER 11 | 8.000 | 1:1 | no | -- | 73 mm |
| Multispindle radial head | | | | | | |
| 3 053 23 002 | ER 11 | 10.000 | 1:1 | no | -- | -- |
| 3 059 23 003 <i>GSE4307</i> | ER 11 | 10.000 | 1:1 | no | -- | -- |
| Radial whirling unit | | | | | | |
| 3 068 24 000 | HW 46 | 8.000 | 1:1 | no | -- | 100 mm |

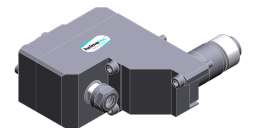
Illustrations similar.



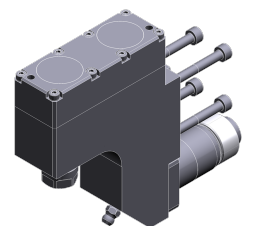
3 010 23 000



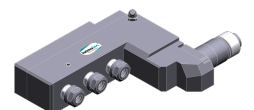
3 010 23 006



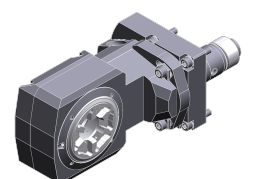
3 037 23 000



3 037 23 002



3 053 23 002



3 068 24 000

TOPSELLER -
many more available!

Static Tools

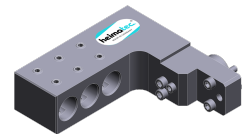
heimatec®

Citizen

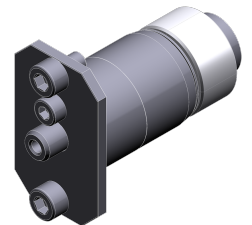
Cincom L(2)12

| Part-# | Tool adaption | Rotation max [1/min] | Coolant |
|-----------------------------------|-------------------------|----------------------|---------|
| Multiple boring bar holder | | | |
| 3 253 25 001 <i>GDF1302</i> | Ø 3/4" (19,05mm) | -- | no |
| 3 253 25 002 <i>GDF1303</i> | Ø 3/4" (19,05mm) | -- | no |
| Plug | | | |
| 3 700 20 000 | | 8.000 | no |
| Adapter bushing | | | |
| 3 732 25 000 <i>SAU819</i> | Ø 19,05 | -- | |
| 3 732 25 003 <i>SAU919</i> | Ø 3/4" (19,05mm) | -- | |
| Collet chuck | | | |
| 3 776 13 000 <i>BDS507</i> | ER 11 | -- | no |
| 3 776 13 001 <i>BDS607</i> | ER 11 | -- | no |
| 3 776 13 002 <i>BDS707</i> | ER 11 | -- | no |
| 3 776 13 003 <i>VDS506</i> | ER 11 | -- | no |
| 3 776 23 001 <i>GDS107</i> | ER 11 | -- | no |
| 3 776 14 000 <i>BDS508</i> | ER 16 | -- | no |
| 3 776 14 001 <i>BDS610</i> | ER 16 | -- | no |
| 3 776 14 003 <i>VDS110</i> | ER 16 | -- | no |
| 3 776 14 002 <i>GDS110</i> | ER 16 M | -- | no |
| 3 776 24 011 <i>GDS210</i> | ER 16 M | -- | no |

Illustrations similar.



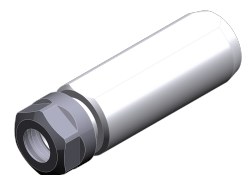
3 253 25 001



3 700 20 000



3 732 25 000



3 776 13 000

TOPSELLER -
many more available!

Static Tools

heimatec®

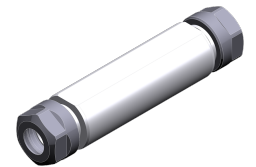
Citizen Cincom L(2)12

| Part-# | Tool adaption | Rotation max [1/min] | Coolant |
|--------------------------------|---------------|----------------------|---------|
| Doppel-collet chuck | | | |
| 3 776 13 004 <i>HDS5406</i> | ER 11 | -- | no |
| 3 776 13 005 <i>HDS5506</i> | ER 11 | -- | no |
| 3 776 13 006 <i>HDS5706</i> | ER 11 | -- | no |
| Tapping chuck | | | |
| 3 778 13 000 <i>BNS407</i> | ER 11 | -- | no |
| 3 778 13 001 <i>VNS406</i> | ER 11 | -- | no |

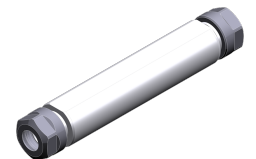
Illustrations similar.



3 776 13 004



3 776 13 005



3 776 13 006



3 778 13 000



3 778 13 001