

**TOPSELLER -**  
many more available!

Live Tools

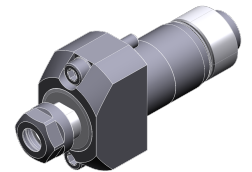
heimatec®

# Citizen

## Cincom L(2)12

Part-#	Tool adaption	Rotation max [1/min]	Gear ratio	Coolant	Pressure max.	Center distance
<b>Axial drilling and milling head</b>						
3 010 23 000 <i>MSC507</i>	<b>ER 11</b>	10.000	1:1	no	--	--
3 010 23 006	<b>ER 11</b>	10.000	1:1	IC	100 bar	--
<b>Woodruff keycutter</b>						
3 037 23 000 <i>GSS1530</i>	<b>ER 11</b>	5.400	1,667:1	no	--	<b>58 mm</b>
3 037 23 002 <i>GSC1507</i>	<b>ER 11</b>	8.000	1:1	no	--	<b>73 mm</b>
<b>Multispindle radial head</b>						
3 053 23 002	<b>ER 11</b>	10.000	1:1	no	--	--
3 059 23 003 <i>GSE4307</i>	<b>ER 11</b>	10.000	1:1	no	--	--
<b>Radial whirling unit</b>						
3 068 24 000	<b>HW 46</b>	8.000	1:1	no	--	<b>100 mm</b>

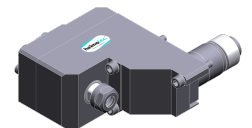
*Illustrations similar.*



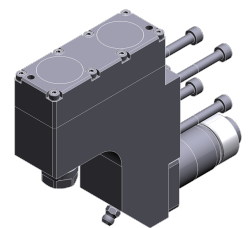
3 010 23 000



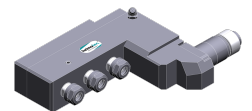
3 010 23 006



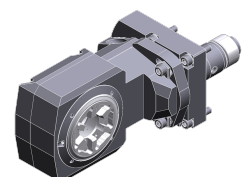
3 037 23 000



3 037 23 002



3 053 23 002



3 068 24 000

**TOPSELLER -**  
many more available!

Static Tools

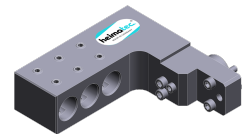
**heimatec**®

# Citizen

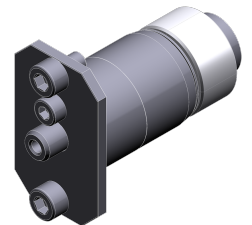
## Cincom L(2)12

Part-#	Tool adaption	Rotation max [1/min]	Coolant
<b>Multiple boring bar holder</b>			
3 253 25 001 <i>GDF1302</i>	<b>Ø 3/4" (19,05mm)</b>	--	no
3 253 25 002 <i>GDF1303</i>	<b>Ø 3/4" (19,05mm)</b>	--	no
<b>Plug</b>			
3 700 20 000		8.000	no
<b>Adapter bushing</b>			
3 732 25 000 <i>SAU819</i>	<b>Ø 19,05</b>	--	
3 732 25 003 <i>SAU919</i>	<b>Ø 3/4" (19,05mm)</b>	--	
<b>Collet chuck</b>			
3 776 13 000 <i>BDS507</i>	<b>ER 11</b>	--	no
3 776 13 001 <i>BDS607</i>	<b>ER 11</b>	--	no
3 776 13 002 <i>BDS707</i>	<b>ER 11</b>	--	no
3 776 13 003 <i>VDS506</i>	<b>ER 11</b>	--	no
3 776 23 001 <i>GDS107</i>	<b>ER 11</b>	--	no
3 776 14 000 <i>BDS508</i>	<b>ER 16</b>	--	no
3 776 14 001 <i>BDS610</i>	<b>ER 16</b>	--	no
3 776 14 003 <i>VDS110</i>	<b>ER 16</b>	--	no
3 776 14 002 <i>GDS110</i>	<b>ER 16 M</b>	--	no
3 776 24 011 <i>GDS210</i>	<b>ER 16 M</b>	--	no

Illustrations similar.



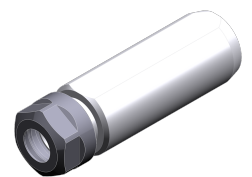
3 253 25 001



3 700 20 000



3 732 25 000



3 776 13 000

**TOPSELLER -**  
many more available!

Static Tools

**heimatec**®

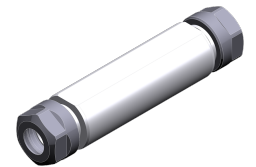
# Citizen Cincom L(2)12

Part-#	Tool adaption	Rotation max [1/min]	Coolant
<b>Doppel-collet chuck</b>			
3 776 13 004 <i>HDS5406</i>	<b>ER 11</b>	--	no
3 776 13 005 <i>HDS5506</i>	<b>ER 11</b>	--	no
3 776 13 006 <i>HDS5706</i>	<b>ER 11</b>	--	no
<b>Tapping chuck</b>			
3 778 13 000 <i>BNS407</i>	<b>ER 11</b>	--	no
3 778 13 001 <i>VNS406</i>	<b>ER 11</b>	--	no

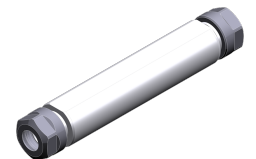
*Illustrations similar.*



3 776 13 004



3 776 13 005



3 776 13 006



3 778 13 000



3 778 13 001