

Citizen
Cincom L(2)12



High-tech from heimatec - heimatec - Tools and systems for productive turning and milling

heimatec belongs to the international technology and quality leaders for precision tools and specializes in the development and production of high-precision static and live tools for all CNC lathes, CNC turn-/mill machines and CNC machining centers.

The range of products* spans from static BMT and VDI tool holders, live tools up to highly complex customer-specific individual solutions. heimatec, headquartered in Renchen, has a own subsidiary in Asia and India and numerous representatives as well as trading partners all over the world.

*OUR PRODCUTS

Static tool holders

Live tool units

Precision tools

Tools for turning and machining centres

Tools for swiss type lathes

Tool changing and uick-change systems





Tool systems for gear production

Digital tool management

This catalogue, including all its parts, is protected by copyright. Any use outside the restricted limitations of the Copyright Act without the consent of heimatec is inadmissible and liable to prosecution. This applies in particular to duplication, translation, microfilming and storage and processing in electronic systems.

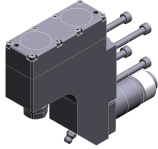
heimatec GmbH reserves the right to make technical changes at any time without giving prior notice. This applies in particular to adjustments at any time to meet new or changed international standards, or in case of further developments of our products or manufacturing processes.

The current version of our General Terms and Conditions can be found on our website.

Part-#	Name	
3 010 23 000	Axial drilling and milling head ER 11	
	Citizen Part-#:	MSC507
	Weight [kg]:	0.360
	Tool drive:	Gear
	Shank size [mm]:	25.00
	Shank type:	BMT
	Tool adaption:	ER 11
	Gear ratio [i]:	1:1
	Torque max [Nm]:	10
	Rotation max [1/min]:	10000
	Rotating direction:	same
	Coolant:	no
	Please note:	stronger bearing
3 010 23 006	Axial drilling and milling head ER 11 IC	
	Weight [kg]:	0.500
	Tool drive:	Gear
	Shank size [mm]:	25.00
	Shank type:	BMT
	Tool adaption:	ER 11
	Gear ratio [i]:	1:1
	Torque max [Nm]:	10
	Rotation max [1/min]:	10000
	Rotating direction:	same
	Coolant:	IC
	Pressure max [bar]:	100
	Please note:	stronger bearing
3 010 24 004	Axial drilling and milling head ER 16	
	Tool drive:	Gear
	Shank size [mm]:	25.00
	Shank type:	BMT
	Tool adaption:	ER 16
	Gear ratio [i]:	1:1
	Torque max [Nm]:	10
	Rotation max [1/min]:	10000
	Rotating direction:	same
	Coolant:	no
3 037 23 000	Woodruff keycutter ER 11	
	Citizen Part-#:	GSS1530
	Weight [kg]:	2.260
	Tool drive:	Gear
	Shank size [mm]:	25.00
	Shank type:	BMT
	Tool adaption:	ER 11
	Gear ratio [i]:	1,667:1
	Torque max [Nm]:	16
	Rotation max [1/min]:	5400
	Rotating direction:	same
	Coolant:	no
	Please note:	stronger bearing; incl. arbor
	Center distance [mm]:	58

Part-#	Name
--------	------

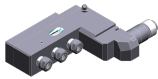
3 037 23 002



Woodruff keycutter ER 11

Citizen Part-#: GSC1507
 Weight [kg]: 1.630
 Tool drive: Gear
 Shank size [mm]: 25.00
 Shank type: BMT
 Tool adaption: ER 11
 Gear ratio [i]: 1:1
 Torque max [Nm]: 8
 Rotation max [1/min]: 8000
 Rotating direction: opposite
 Coolant: no
 Please note: stronger bearing
 Center distance [mm]: 73

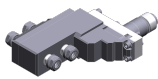
3 053 23 002



Multispindle radial head ER 11

Weight [kg]: 2.780
 Notation: offset
 Tool drive: Gear
 Shank size [mm]: 25.00
 Shank type: BMT
 Tool adaption: ER 11
 ER 11
 ER 11
 Gear ratio [i]: 1:1
 Torque max [Nm]: 8
 Rotation max [1/min]: 10000
 Rotating direction: same/opposite
 Coolant: no
 Please note: stronger bearing
 Center distance [mm]: 60,5/90,5/120,5

3 059 23 008



Multispindle radial head ER 11


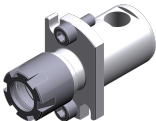


Citizen Part-#: GSE4407
 Weight [kg]: 2.050
 Employment for: GSE4107
 Version: 2 x double spindle
 Tool drive: Gear
 Shank size [mm]: 25.00
 Shank type: BMT
 Tool adaption: ER 11
 ER 11
 ER 11
 ER 11
 Gear ratio [i]: 1:1
 Torque max [Nm]: 8
 Rotation max [1/min]: 10000
 Rotating direction: same/opposite
 Coolant: no
 Please note: stronger bearing
 Center distance [mm]: 75,0/105,0

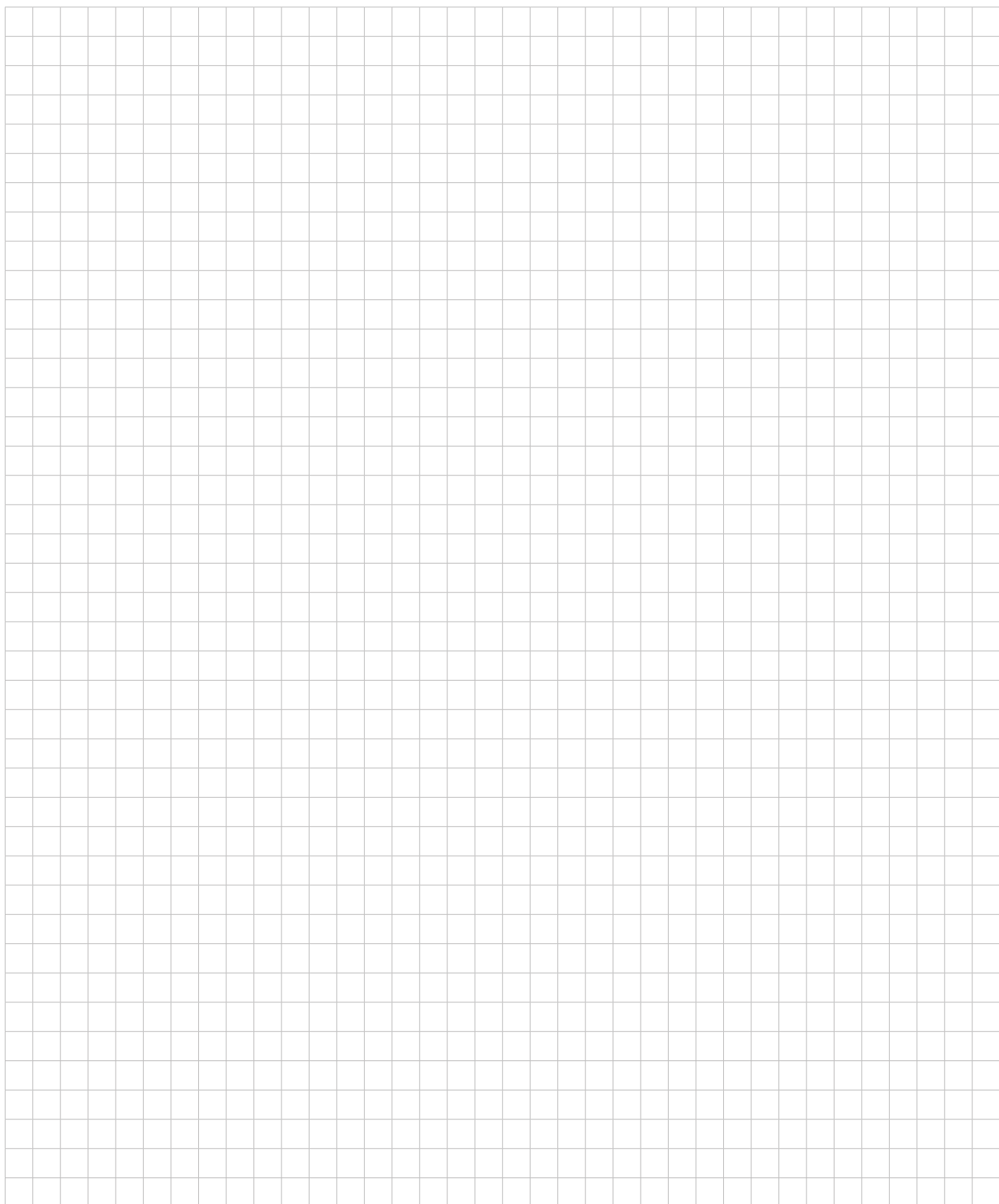
Part-#	Name	
3 068 24 000	Radial whirling unit HW 46	
	Weight [kg]:	4.240
	Tool drive:	Gear
	Shank size [mm]:	25.00
	Shank type:	BMT
	Tool adaption:	HW 46
	Gear ratio [i]:	1:1
	Torque max [Nm]:	16
	Rotation max [1/min]:	8000
	Rotating direction:	same
	Coolant:	no
	Please note:	Use necessarily check; without cutting inserts carrier
	Center distance [mm]:	100
3 253 25 001	Multiple boring bar holder Ø 3/4"	
	Citizen Part-#:	GDF1302
	Notation:	offset
	Shank size [mm]:	25.00
	Shank type:	BMT
	Tool adaption:	Ø 3/4" (19,05mm)
		Ø 3/4" (19,05mm)
		Ø 3/4" (19,05mm)
	Coolant:	no
	Center distance [mm]:	62/ 85/108
3 253 25 002	Multiple boring bar holder Ø 3/4"	
	Citizen Part-#:	GDF1303
	Weight [kg]:	1.700
	Notation:	offset
	Shank size [mm]:	25.00
	Shank type:	BMT
	Tool adaption:	Ø 3/4" (19,05mm)
		Ø 3/4" (19,05mm)
		Ø 3/4" (19,05mm)
	Coolant:	no
	Center distance [mm]:	60,5/ 90,5/120,5
3 700 20 000	Plug with spur gear Ø 25,0	
	Tool drive:	Gear
	Shank size [mm]:	25.00
	Shank type:	BMT
	Torque max [Nm]:	10
	Rotation max [1/min]:	8000
	Rotating direction:	same
	Coolant:	no
3 732 25 000	Adapter bushing 25/19,05/36	
	Citizen Part-#:	SAU819
	Weight [kg]:	0.067
	Version:	short S
	Shank size [mm]:	25.00
	Tool adaption:	Ø 19,05
	Please note:	Total length 36,0 mm

Part-#	Name	
3 732 25 003	Adapter bushing 25/19,05/65	
	Citizen Part-#:	SAU919
	Weight [kg]:	0.400
	Version:	long L
	Shank size [mm]:	25.00
	Tool adaption:	Ø 3/4" (19,05mm)
	Please note:	Total length 65,0 mm
3 776 13 000	Collet chuck Ø 19,05/ER 11	
	Citizen Part-#:	BDS507
	Weight [kg]:	0.110
	Shank size [mm]:	19.05
	Tool adaption:	ER 11
	Coolant:	no
	Please note:	Total length 61,3 mm
3 776 13 001	Collet chuck Ø 19,05/ER 11	
	Citizen Part-#:	BDS607
	Weight [kg]:	0.120
	Version:	long L
	Shank size [mm]:	19.05
	Tool adaption:	ER 11
	Coolant:	no
	Please note:	Total length 73,3 mm
3 776 13 002	Collet chuck Ø 19,05/ER 11	
	Citizen Part-#:	BDS707
	Weight [kg]:	0.090
	Version:	short S
	Shank size [mm]:	19.05
	Tool adaption:	ER 11
	Coolant:	no
	Please note:	Total length 54,3 mm
3 776 13 003	Collet chuck Ø 19,05/ER 11	
	Citizen Part-#:	VDS506
	Weight [kg]:	0.142
	Version:	long XL
	Shank size [mm]:	19.05
	Tool adaption:	ER 11
	Coolant:	no
	Please note:	Total length 84,8 mm
3 776 13 004	Doppel-collet chuck Ø 19,05/ER 11	
	Citizen Part-#:	HDS5406
	Weight [kg]:	0.070
	Version:	short S
	Shank size [mm]:	19.05
	Tool adaption:	ER 11
		ER 11
	Coolant:	no
	Please note:	Total length 65,0 mm

Citizen
Cincom L(2)12

Part-#	Name	
3 776 13 005	Doppel-collet chuck Ø 19,05/ER 11	
	Citizen Part-#:	HDS5506
	Weight [kg]:	0.100
	Version:	long L
	Shank size [mm]:	19.05
	Tool adaption:	ER 11
		ER 11
	Coolant:	no
	Please note:	Total length 85,0 mm
3 776 13 006	Doppel-collet chuck Ø 19,05/ER 11	
	Citizen Part-#:	HDS5706
	Version:	long XL
	Shank size [mm]:	19.05
	Tool adaption:	ER 11
		ER 11
	Coolant:	no
	Please note:	Total length 110,0 mm
3 776 14 000	Collet chuck Ø 19,05/ER 16	
	Citizen Part-#:	BDS508
	Weight [kg]:	0.112
	Shank size [mm]:	19.05
	Tool adaption:	ER 16
	Coolant:	no
	Please note:	Total length 65,3 mm
3 776 14 001	Collet chuck Ø 19,05/ER 16	
	Citizen Part-#:	BDS610
	Weight [kg]:	0.120
	Version:	long L
	Shank size [mm]:	19.05
	Tool adaption:	ER 16
	Coolant:	no
	Please note:	Total length 80,3 mm
3 776 14 002	Collet chuck Ø 19,05/ER 16 M	
	Citizen Part-#:	GDS110
	Weight [kg]:	0.126
	Shank size [mm]:	19.05
	Tool adaption:	ER 16 M
	Coolant:	no
	Please note:	Total length 93,2 mm
3 776 14 003	Collet chuck Ø 19,05/ER 16	
	Citizen Part-#:	VDS110
	Weight [kg]:	0.140
	Version:	long XL
	Shank size [mm]:	19.05
	Tool adaption:	ER 16
	Coolant:	no
	Please note:	Total length 90,0 mm

Part-#	Name	
3 776 23 001	Collet chuck Ø 25/ER 11	
	Citizen Part-#:	GDS107
	Weight [kg]:	0.330
	Shank size [mm]:	25.00
	Shank type:	BMT
	Tool adaption:	ER 11
	Coolant:	no
	Please note:	Total length 116,0 mm
3 776 24 011	Collet chuck Ø 25/ER 16 M	
	Citizen Part-#:	GDS210
	Weight [kg]:	0.150
	Shank size [mm]:	25.00
	Shank type:	BMT
	Tool adaption:	ER 16 M
	Coolant:	no
	Please note:	Total length 61,2 mm
3 778 13 000	Tapping chuck Ø 19,05/ER 11	
	Citizen Part-#:	BNS407
	Notation:	with length compensation 8 mm
	Version:	short S
	Shank size [mm]:	19.05
	Tool adaption:	ER 11
	Coolant:	no
	Please note:	incl. per 1x Schneideisenaufnahme ø16x5 / 86,0 mm and
3 778 13 001	Tapping chuck Ø 19,05/ER 11	
	Citizen Part-#:	VNS406
	Notation:	with length compensation 8 mm
	Version:	long L
	Shank size [mm]:	19.05
	Tool adaption:	ER 11
	Coolant:	no
	Please note:	incl. per 1x Schneideisenaufnahme ø16x5 /119,5 mm and





heimatec.u-tec®

heimatec.com

Products / Tool change systems /
u-tec® Tool-changing system



versions see catalog



heimatec.easy-quick

heimatec.com

Products / Tool change systems /
easy-quick HT quick-changing system



versions see catalog



heimatec.Capto™

heimatec.com

Products / Tool change systems /
heimatec.Capto™ quick-changing system



versions see catalog



heimatec.accessories

heimatec.com

Products / Accessories



versions see catalog





● heimatec overseas branches

○ global representations of heimatec

heimatec[®]

heimatec GmbH
Präzisionswerkzeuge
Carl-Benz-Str. 4
77871 Renchen
Germany

T +49 7843 9466 0
www.heimatec.com
info@heimatec.com

Please find the contact details of our worldwide trading partners on our website:
<https://heimatec.com/business-partners>