

TOPSELLER -
many more available!

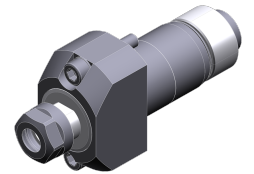
Live Tools

heimatec®

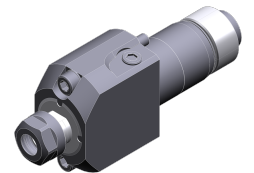
Citizen Cincom L12

Part-#	Tool adaption	Rotation max [1/min]	Gear ratio	Coolant	Pressure max.	Center distance
Axial drilling and milling head						
3 010 23 000 <i>MSC507</i>	ER 11	10.000	1:1	no	--	--
3 010 23 006	ER 11	10.000	1:1	IC	100 bar	--
3 013 23 000	ER 11	48.000	1:4	no	--	--
Woodruff keycutter						
3 037 23 000 <i>GSS1530</i>	ER 11	5.400	1,667:1	no	--	58 mm
3 037 23 003 <i>~ GSS1530</i>	ER 11	4.500	2:1	no	--	58 mm
3 037 23 004 <i>~ GSS1530</i>	ER 11	9.000	1:1	no	--	58 mm
Multispindle radial head						
3 059 23 000 <i>GSE3607</i>	ER 11	10.000	1:1	no	--	--
Radial whirling unit						
3 068 24 000	HW 46	8.000	1:1	no	--	100 mm

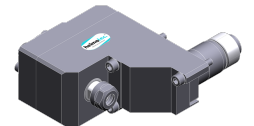
Illustrations similar.



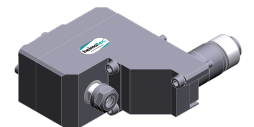
3 010 23 000



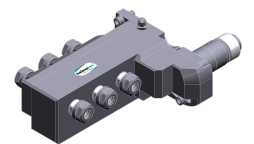
3 010 23 006



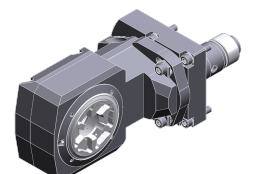
3 037 23 000



3 037 23 003



3 037 23 004



3 059 23 000



3 068 24 000

TOPSELLER -
many more available!

Static Tools

heimatec®

Citizen

Cincom L12

Part-#	Tool adaption	Coolant
--------	---------------	---------

Plug

3 200 20 000

Multiple boring bar holder

3 253 25 001 **Ø 3/4" (19,05mm)** no
GDF1302

3 253 25 002 **Ø 3/4" (19,05mm)** no
GDF1303

Adapter bushing

3 732 25 000 **Ø 19,05**
SAU819

Collet chuck

3 776 13 000 **ER 11** no
BDS507

3 776 13 001 **ER 11** no
BDS607

3 776 13 002 **ER 11** no
BDS707

3 776 13 003 **ER 11** no
VDS506

3 776 14 000 **ER 16** no
BDS508

3 776 14 001 **ER 16** no
BDS610

3 776 14 002 **ER 16 M** no
GDS110

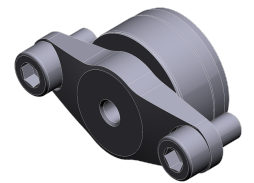
Doppel-collet chuck

3 776 13 004 **ER 11** no
HDS5406

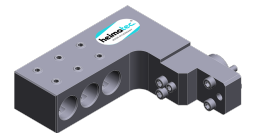
3 776 13 005 **ER 11** no
HDS5506

3 776 13 006 **ER 11** no
HDS5706

Illustrations similar.



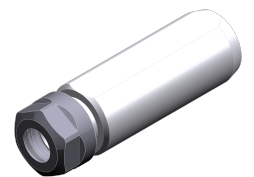
3 200 20 000



3 253 25 001



3 732 25 000



3 776 13 000



3 776 13 004

TOPSELLER -
many more available!

Static Tools

heimatec®

Citizen Cincom L12

Part-#	Tool adaption	Coolant
Tapping chuck		
3 778 13 000 <i>BNS407</i>	ER 11	no
3 778 13 001 <i>VNS406</i>	ER 11	no

Illustrations similar.



3 778 13 000



3 778 13 001