

TOPSELLER -
many more available!

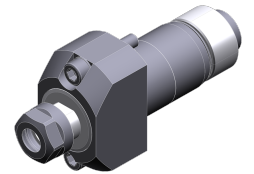
Live Tools

heimatec®

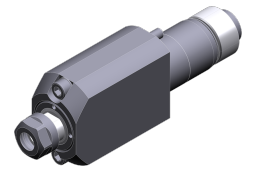
Citizen Cincom L20

Part-#	Tool adaption	Rotation max [1/min]	Gear ratio	Coolant	Pressure max.	Center distance
Axial drilling and milling head						
3 010 23 000 <i>MSC507</i>	ER 11	10.000	1:1	no	--	--
3 010 23 001 <i>GSE3407</i>	ER 11	9.000	1:1	no	--	--
3 010 23 006	ER 11	10.000	1:1	IC	100 bar	--
3 013 23 000	ER 11	48.000	1:4	no	--	--
3 013 33 000	ER 11	48.000	1:4	no	--	--
3 013 33 002	ER 11	48.000	1:4	no	--	--
3 013 33 005	ER 11	48.000	1:4	no	--	--
3 010 34 000 <i>GSC1310</i>	ER 16 M	10.000	1:1	no	--	--
3 010 34 004	ER 16 M	8.000	1:1	no	--	--
3 010 34 006	ER 16 M	6.000	1:1	IC	100 bar	--
Woodruff keycutter						
3 037 23 000 <i>GSS1530</i>	ER 11	5.400	1,667:1	no	--	58 mm
3 037 23 002 <i>GSC1507</i>	ER 11	8.000	1:1	no	--	73 mm
3 037 23 001 <i>GSC1407</i>	ER 11	8.000	1:1	no	--	113 mm
Multispindle drilling head						
3 050 23 001	ER 11	8.000	1:1	no	--	--
3 050 33 000 <i>GSC1607</i>	ER 11	8.000	1:1	no	--	--

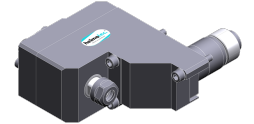
Illustrations similar.



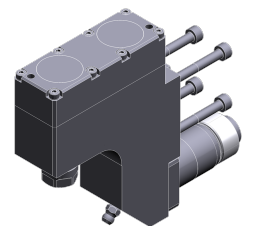
3 010 23 000



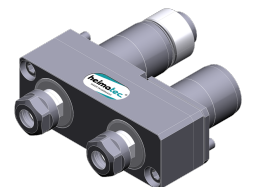
3 010 23 001



3 037 23 000



3 037 23 002



3 050 23 001

TOPSELLER -
many more available!

Live Tools

heimatec®

Citizen

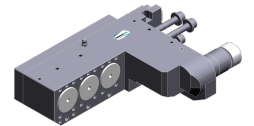
Cincom L20

Part-#	Tool adaption	Rotation max [1/min]	Gear ratio	Coolant	Pressure max.	Center distance
Multispindle radial head						
3 053 33 000 <i>BSE607</i>	ER 11	12.000	1:1	no	--	--
3 059 33 000 <i>GSE3707</i>	ER 11	8.000	1:1	no	--	--
3 059 33 002 <i>BSE707</i>	ER 11	12.000	1:1	no	--	--
3 059 33 004 <i>GSE4007</i>	ER 11	9.000	1:1	no	--	--
3 053 34 000 <i>GSE1610</i>	ER 16 M	8.000	1:1	no	--	--
3 053 34 005	ER 16 M	8.000	1:1	IC	140 bar	--
Multispindle adapter						
3 053 37 000 <i>GSE3210</i>	Interface Ø 31,0	8.000	1:1	no	--	--
Multispindle drill and mill head						
3 059 23 004	ER 11	8.000	1:1	no	--	73 mm
Radial whirling unit						
3 068 32 000	HW 46	8.000	1:1	no	--	89,5 mm
3 068 34 001	HW 46	8.000	1:1	no	--	89,5 mm

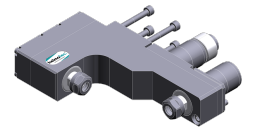
Illustrations similar.



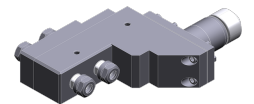
3 053 33 000



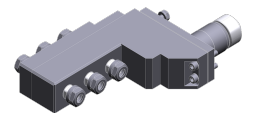
3 053 37 000



3 059 23 004



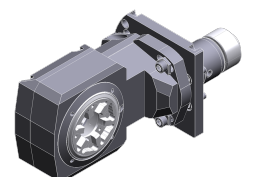
3 059 33 000



3 059 33 002



3 068 32 000



3 068 34 001

TOPSELLER -
many more available!

Static Tools

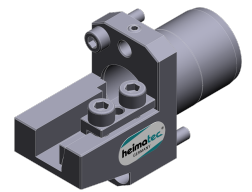
heimatec®

Citizen

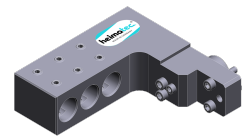
Cincom L20

Part-#	Tool adaption	Rotation max [1/min]	Coolant
Turning holder			
3 214 34 000	Sq. 12	--	no
Multiple boring bar holder			
3 253 25 001 <i>GDF1302</i>	Ø 3/4" (19,05mm)	--	no
3 253 25 002 <i>GDF1303</i>	Ø 3/4" (19,05mm)	--	no
3 253 35 000 <i>GDF1207</i>	Ø 3/4" (19,05mm)	--	no
Plug			
3 700 30 000 <i>GSD107</i>		8.000	no
Adapter bushing			
3 732 25 000 <i>SAU819</i>	Ø 19,05	--	
3 732 25 003 <i>SAU919</i>	Ø 3/4" (19,05mm)	--	
3 739 25 000 <i>SAU1019</i>	Ø 3/4" (19,05mm)	--	
Collet chuck			
3 776 13 000 <i>BDS507</i>	ER 11	--	no
3 776 13 001 <i>BDS607</i>	ER 11	--	no
3 776 13 002 <i>BDS707</i>	ER 11	--	no
3 776 13 003 <i>VDS506</i>	ER 11	--	no
3 776 13 008 <i>LDS107</i>	ER 11	--	no
3 776 23 001 <i>GDS107</i>	ER 11	--	no

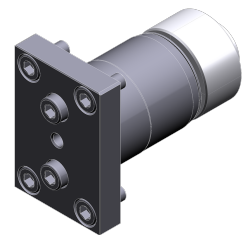
Illustrations similar.



3 214 34 000



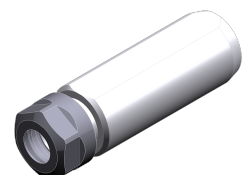
3 253 25 001



3 700 30 000



3 732 25 000



3 776 13 000

TOPSELLER -
many more available!

Static Tools

heimatec®

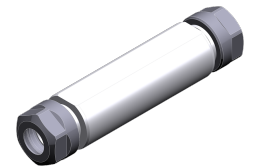
Citizen Cincom L20

Part-#	Tool adaption	Rotation max [1/min]	Coolant
3 776 14 000 <i>BDS508</i>	ER 16	--	no
3 776 14 001 <i>BDS610</i>	ER 16	--	no
3 776 14 003 <i>VDS110</i>	ER 16	--	no
3 776 14 004 <i>LDS110</i>	ER 16	--	no
3 776 14 002 <i>GDS110</i>	ER 16 M	--	no
3 776 24 011 <i>GDS210</i>	ER 16 M	--	no
3 776 24 015	ER 20 M	--	no
Doppel-collet chuck			
3 776 13 004 <i>HDS5406</i>	ER 11	--	no
3 776 13 005 <i>HDS5506</i>	ER 11	--	no
3 776 13 006 <i>HDS5706</i>	ER 11	--	no
3 776 13 007 <i>HDS5806</i>	ER 11	--	no
Tapping chuck			
3 778 13 000 <i>BNS407</i>	ER 11	--	no
3 778 13 001 <i>VNS406</i>	ER 11	--	no

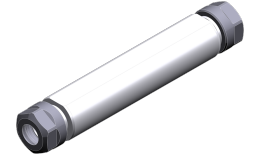
Illustrations similar.



3 776 13 004



3 776 13 005



3 776 13 006



3 776 13 007



3 778 13 000



3 778 13 001