

Citizen
Cincom L20



High-tech from heimatec - heimatec - Tools and systems for productive turning and milling

heimatec belongs to the international technology and quality leaders for precision tools and specializes in the development and production of high-precision static and live tools for all CNC lathes, CNC turn-/mill machines and CNC machining centers.

The range of products* spans from static BMT and VDI tool holders, live tools up to highly complex customer-specific individual solutions. heimatec, headquartered in Renchen, has a own subsidiary in Asia and India and numerous representatives as well as trading partners all over the world.

*OUR PRODCUTS

Static tool holders

Live tool units

Precision tools

Tools for turning and machining centres

Tools for swiss type lathes

Tool changing and uick-change systems


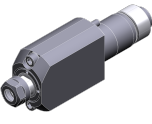


Tool systems for gear production


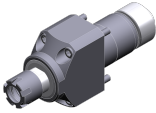
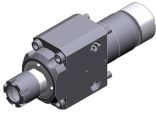

Digital tool management

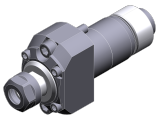



This catalogue, including all its parts, is protected by copyright. Any use outside the restricted limitations of the Copyright Act without the consent of heimatec is inadmissible and liable to prosecution. This applies in particular to duplication, translation, microfilming and storage and processing in electronic systems.

heimatec GmbH reserves the right to make technical changes at any time without giving prior notice. This applies in particular to adjustments at any time to meet new or changed international standards, or in case of further developments of our products or manufacturing processes.

The current version of our General Terms and Conditions can be found on our website.

Part-#	Name	
3 010 23 000	Axial drilling and milling head ER 11	
	Citizen Part-#:	MSC507
	Weight [kg]:	0.360
	Tool drive:	Gear
	Shank size [mm]:	25.00
	Shank type:	BMT
	Tool adaption:	ER 11
	Gear ratio [i]:	1:1
	Torque max [Nm]:	10
	Rotation max [1/min]:	10000
	Rotating direction:	same
	Coolant:	no
	Please note:	stronger bearing
3 010 23 001	Axial drilling and milling head ER 11	
	Citizen Part-#:	GSE3407
	Weight [kg]:	0.660
	Version:	long L
	Tool drive:	Gear
	Shank size [mm]:	25.00
	Shank type:	BMT
	Tool adaption:	ER 11
	Gear ratio [i]:	1:1
	Torque max [Nm]:	10
	Rotation max [1/min]:	9000
	Rotating direction:	same
	Coolant:	no
	Please note:	stronger bearing
3 010 23 006	Axial drilling and milling head ER 11 IC	
	Weight [kg]:	0.500
	Tool drive:	Gear
	Shank size [mm]:	25.00
	Shank type:	BMT
	Tool adaption:	ER 11
	Gear ratio [i]:	1:1
	Torque max [Nm]:	10
	Rotation max [1/min]:	10000
	Rotating direction:	same
	Coolant:	IC
	Pressure max [bar]:	100
	Please note:	stronger bearing
3 010 24 004	Axial drilling and milling head ER 16	
	Weight [kg]:	0.490
	Tool drive:	Gear
	Shank size [mm]:	25.00
	Shank type:	BMT
	Tool adaption:	ER 16
	Gear ratio [i]:	1:1
	Torque max [Nm]:	10
	Rotation max [1/min]:	10000
	Rotating direction:	same
	Coolant:	no

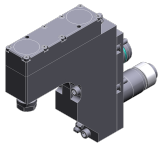
Part-#	Name	
3 010 34 000	Axial drilling and milling head ER 16 M	
	Citizen Part-#:	GSC1310
	Weight [kg]:	0.600
	Tool drive:	Gear
	Shank size [mm]:	31.00
	Shank type:	BMT
	Tool adaption:	ER 16 M
	Gear ratio [i]:	1:1
	Torque max [Nm]:	20
	Rotation max [1/min]:	10000
	Rotating direction:	same
	Coolant:	no
	Please note:	stronger bearing, dimension turret face to front edge
3 010 34 004	Axial drilling and milling head ER 16 M	
	Weight [kg]:	0.790
	Tool drive:	Gear
	Shank size [mm]:	31.00
	Shank type:	BMT
	Tool adaption:	ER 16 M
	Gear ratio [i]:	1:1
	Torque max [Nm]:	20
	Rotation max [1/min]:	8000
	Rotating direction:	same
	Coolant:	no
	Please note:	stronger bearing, dimension turret face to front edge
3 010 34 006	Axial drilling and milling head ER 16 M IC	
	Weight [kg]:	0.940
	Tool drive:	Gear
	Shank size [mm]:	31.00
	Shank type:	BMT
	Tool adaption:	ER 16 M
	Gear ratio [i]:	1:1
	Torque max [Nm]:	20
	Rotation max [1/min]:	6000
	Rotating direction:	same
	Coolant:	IC
	Pressure max [bar]:	100
	Please note:	stronger bearing, dimension turret face to front edge
3 010 34 018	Axial drilling and milling head ER 16 M	
	Citizen Part-#:	GSC1210
	Weight [kg]:	0.600
	Tool drive:	Gear
	Shank size [mm]:	31.00
	Shank type:	BMT
	Tool adaption:	ER 16 M
	Gear ratio [i]:	1:1
	Torque max [Nm]:	16
	Rotation max [1/min]:	6000
	Rotating direction:	same
	Coolant:	no
	Please note:	stronger bearing

Part-#	Name	
3 013 23 000	Axial drilling and milling head ER 11	
	Weight [kg]:	0.360
	Tool drive:	Gear
	Shank size [mm]:	25.00
	Shank type:	BMT
	Tool adaption:	ER 11
	Gear ratio [i]:	1:4
	Torque max [Nm]:	2,5
	Rotation max [1/min]:	48000
	Rotating direction:	same
	Coolant:	no
3 013 33 000	Axial drilling and milling head ER 11	
	Weight [kg]:	0.560
	Tool drive:	Gear
	Shank size [mm]:	31.00
	Shank type:	BMT
	Tool adaption:	ER 11
	Gear ratio [i]:	1:4
	Torque max [Nm]:	2,5
	Rotation max [1/min]:	48000
	Rotating direction:	same
	Coolant:	no
3 013 33 002	Axial drilling and milling head ER 11	
	Weight [kg]:	0.620
	Tool drive:	Gear
	Shank size [mm]:	31.00
	Shank type:	BMT
	Tool adaption:	ER 11
	Gear ratio [i]:	1:4
	Torque max [Nm]:	2,5
	Rotation max [1/min]:	48000
	Rotating direction:	same
	Coolant:	no
3 013 33 005	Axial drilling and milling head ER 11	
	Weight [kg]:	0.800
	Tool drive:	Gear
	Shank size [mm]:	31.00
	Shank type:	BMT
	Tool adaption:	ER 11
	Gear ratio [i]:	1:4
	Torque max [Nm]:	2,5
	Rotation max [1/min]:	48000
	Rotating direction:	same
	Coolant:	no
3 037 23 000	Woodruff keycutter ER 11	
	Citizen Part-#:	GSS1530
	Weight [kg]:	2.260
	Tool drive:	Gear
	Shank size [mm]:	25.00
	Shank type:	BMT
	Tool adaption:	ER 11
	Gear ratio [i]:	1,667:1

Part-#	Name
--------	------

Torque max [Nm]: 16
 Rotation max [1/min]: 5400
 Rotating direction: same
 Coolant: no
 Please note: stronger bearing; incl. arbor
 Center distance [mm]: 58

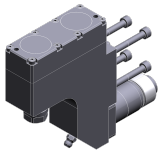
3 037 23 001



Woodruff keycutter ER 11

Citizen Part-#: GSC1407
 Weight [kg]: 2.370
 Tool drive: Gear
 Shank size [mm]: 25.00
 Shank type: BMT
 Tool adaption: ER 11
 Gear ratio [i]: 1:1
 Torque max [Nm]: 8
 Rotation max [1/min]: 8000
 Rotating direction: same
 Coolant: no
 Please note: stronger bearing
 Center distance [mm]: 113

3 037 23 002



Woodruff keycutter ER 11

Citizen Part-#: GSC1507
 Weight [kg]: 1.630
 Tool drive: Gear
 Shank size [mm]: 25.00
 Shank type: BMT
 Tool adaption: ER 11
 Gear ratio [i]: 1:1
 Torque max [Nm]: 8
 Rotation max [1/min]: 8000
 Rotating direction: opposite
 Coolant: no
 Please note: stronger bearing
 Center distance [mm]: 73

3 043 23 000



Universal head +90°/-20° stronger ER 11 AX

Weight [kg]: 2.254
 Version: offset
 Tool drive: Gear
 Shank size [mm]: 25.00
 Shank type: BMT
 Tool adaption: ER 11 A
 Gear ratio [i]: 1:1
 Torque max [Nm]: 8
 Rotation max [1/min]: 6000
 Rotating direction: same
 Coolant: no
 Center distance [mm]: 35
 Offset [mm]: 25

Part-#	Name
--------	------

3 050 23 001

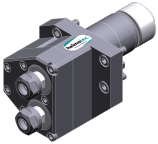
Multispindle drilling head ER 11



Tool drive: Gear
 Shank size [mm]: 25.00
 Shank type: BMT
 Tool adaption: ER 11
 ER 11
 Gear ratio [i]: 1:1
 Torque max [Nm]: 8
 Rotation max [1/min]: 8000
 Rotating direction: opposite
 Coolant: no
 Please note: stronger bearing
 Offset [mm]: 45

3 050 33 000

Multispindle drilling head ER 11



Citizen Part-#: GSC1607
 Weight [kg]: 1.390
 Version: 2-spindles
 Tool drive: Gear
 Shank size [mm]: 31.00
 Shank type: BMT
 Tool adaption: ER 11
 ER 11
 Gear ratio [i]: 1:1
 Torque max [Nm]: 16
 Rotation max [1/min]: 8000
 Rotating direction: same
 Coolant: no
 Please note: stronger bearing
 Offset [mm]: 0/31

3 053 33 000

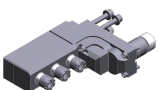
Multispindle radial head ER 11



Citizen Part-#: BSE607
 Version: 3-spindles
 Tool drive: Gear
 Shank size [mm]: 31.00
 Shank type: BMT
 Tool adaption: ER 11
 ER 11
 ER 11
 Gear ratio [i]: 1:1
 Torque max [Nm]: 10
 Rotation max [1/min]: 12000
 Rotating direction: same/opposite
 Coolant: no
 Please note: stronger bearing
 Center distance [mm]: 76,5/106,5/136,5

3 053 34 000

Multispindle radial head ER 16 M

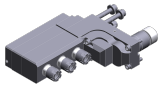


Citizen Part-#: GSE1610
 Weight [kg]: 4.720
 Notation: 90° adjustable
 Version: 3-spindles
 Tool drive: Gear
 Shank size [mm]: 31.00
 Shank type: BMT

Part-#	Name
--------	------

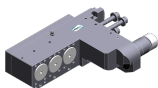
Tool adaption: ER 16 M
ER 16 M
ER 16 M
Gear ratio [i]: 1:1
Torque max [Nm]: 12
Rotation max [1/min]: 8000
Rotating direction: same/opposite
Coolant: no
Please note: stronger bearing
Center distance [mm]: 78/114/150

3 053 34 005 Multispindle radial head ER 16 M IC



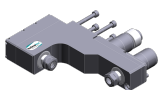
Weight [kg]: 5.420
Notation: 90° adjustable
Version: 3-spindles
Tool drive: Gear
Shank size [mm]: 31.00
Shank type: BMT
Tool adaption: ER 16 M
ER 16 M
ER 16 M
Gear ratio [i]: 1:1
Torque max [Nm]: 12
Rotation max [1/min]: 8000
Rotating direction: same/opposite
Coolant: IC
Pressure max [bar]: 140
Please note: stronger bearing; check applicability!
Center distance [mm]: 78/114/150

3 053 37 000 Multispindle adapter Ø 31



Citizen Part-#: GSE3210
Weight [kg]: 6.500
Notation: 90° adjustable
Version: 3-spindles
Tool drive: Gear
Shank size [mm]: 31.00
Shank type: BMT
Tool adaption: Interface Ø 31,0
Interface Ø 31,0
Interface Ø 31,0
Gear ratio [i]: 1:1
Torque max [Nm]: 12
Rotation max [1/min]: 8000
Rotating direction: opposite
Coolant: no
Center distance [mm]: 88,5/125,5/162,5

3 059 23 004 Multispindle drill and mill head ER 11



Tool drive: Gear
Shank size [mm]: 25.00
Shank type: BMT
Tool adaption: ER 11
ER 11
Gear ratio [i]: 1:1
Torque max [Nm]: 8
Rotation max [1/min]: 8000

Part-#	Name
--------	------

Rotating direction: opposite
Coolant: no
Please note: stronger bearing
Center distance [mm]: 73
Offset [mm]: 45

3 059 33 000



Multispindle radial head ER 11
Citizen Part-#: GSE3707
Version: 2 x double spindle
Tool drive: Gear
Shank size [mm]: 31.00
Shank type: BMT
Tool adaption: ER 11
ER 11
ER 11
ER 11
Gear ratio [i]: 1:1
Torque max [Nm]: 10
Rotation max [1/min]: 8000
Rotating direction: same/opposite
Coolant: no
Please note: stronger bearing
Center distance [mm]: 76,5/106,5

3 059 33 002



Multispindle radial head ER 11
Citizen Part-#: BSE707
Version: 3 x double spindle
Tool drive: Gear
Shank size [mm]: 31.00
Shank type: BMT
Tool adaption: ER 11
ER 11
ER 11
ER 11
ER 11
ER 11
Gear ratio [i]: 1:1
Torque max [Nm]: 10
Rotation max [1/min]: 12000
Rotating direction: same/opposite
Coolant: no
Please note: stronger bearing
Center distance [mm]: 76,5/106,5/136,5

3 059 33 003

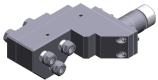


Multispindle radial head ER 11
Citizen Part-#: GSE3907
Version: 2 x double spindle
Tool drive: Gear
Shank size [mm]: 31.00
Shank type: BMT
Tool adaption: ER 11
ER 11
ER 11
ER 11
Gear ratio [i]: 1:1
Torque max [Nm]: 10
Rotation max [1/min]: 9000

Part-#	Name
--------	------

Rotating direction: same/opposite
Coolant: no
Please note: stronger bearing
Center distance [mm]: 76,5/106,5

3 059 33 004 Multispindle radial head ER 11



Citizen Part-#: GSE4007
Version: 3 x double spindle
Tool drive: Gear
Shank size [mm]: 31.00
Shank type: BMT
Tool adaption: ER 11
ER 11
ER 11
ER 11
ER 11
ER 11

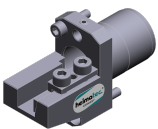
Gear ratio [i]: 1:1
Torque max [Nm]: 10
Rotation max [1/min]: 9000
Rotating direction: same/opposite
Coolant: no
Please note: stronger bearing
Center distance [mm]: 76,5/94,5/112,5
Offset [mm]: 0/24/0

3 068 34 001 Radial whirling unit HW 46



Tool drive: Gear
Shank size [mm]: 31.00
Shank type: BMT
Tool adaption: HW 46
Gear ratio [i]: 1:1
Torque max [Nm]: 16
Rotation max [1/min]: 8000
Rotating direction: same
Coolant: no
Please note: Check applicability; without cutting inserts carrier
Center distance [mm]: 89,5

3 214 34 000 Turning holder sq. 12



Weight [kg]: 0.420
Shank size [mm]: 31.00
Shank type: BMT
Tool adaption: Sq. 12
Coolant: no

3 253 25 001 Multiple boring bar holder Ø 3/4"



Citizen Part-#: GDF1302
Notation: offset
Shank size [mm]: 25.00
Shank type: BMT
Tool adaption: Ø 3/4" (19,05mm)
Ø 3/4" (19,05mm)
Ø 3/4" (19,05mm)
Coolant: no

Part-#	Name	
	Center distance [mm]:	62/ 85/108
3 253 25 002	Multiple boring bar holder Ø 3/4"	
	Citizen Part-#:	GDF1303
	Weight [kg]:	1.700
	Notation:	offset
	Shank size [mm]:	25.00
	Shank type:	BMT
	Tool adaption:	Ø 3/4" (19,05mm) Ø 3/4" (19,05mm) Ø 3/4" (19,05mm)
	Coolant:	no
	Center distance [mm]:	60,5/ 90,5/120,5
3 253 35 000	Multiple boring bar holder Ø 3/4"	
	Citizen Part-#:	GDF1207
	Weight [kg]:	2.340
	Notation:	offset
	Shank size [mm]:	31.00
	Shank type:	BMT
	Tool adaption:	Ø 3/4" (19,05mm) Ø 3/4" (19,05mm) Ø 3/4" (19,05mm)
	Coolant:	no
	Center distance [mm]:	76,5/106,5/136,5
3 700 30 000	Plug with spur gear Ø 31,0	
	Citizen Part-#:	GSD107
	Weight [kg]:	0.390
	Tool drive:	Gear
	Shank size [mm]:	31.00
	Shank type:	BMT
	Torque max [Nm]:	20
	Rotation max [1/min]:	8000
	Rotating direction:	same
	Coolant:	no
3 732 25 000	Adapter bushing 25/19,05/36	
	Citizen Part-#:	SAU819
	Weight [kg]:	0.067
	Version:	short S
	Shank size [mm]:	25.00
	Tool adaption:	Ø 19,05
	Please note:	Total length 36,0 mm
3 732 25 003	Adapter bushing 25/19,05/65	
	Citizen Part-#:	SAU919
	Weight [kg]:	0.400
	Version:	long L
	Shank size [mm]:	25.00
	Tool adaption:	Ø 3/4" (19,05mm)
	Please note:	Total length 65,0 mm

Part-#	Name	
3 739 25 000	Adapter bushing 25/19,05/49 - 30	
	Citizen Part-#:	SAU1019
	Weight [kg]:	0.620
	Notation:	offset
	Shank size [mm]:	25.00
	Shank type:	BMT
	Tool adaption:	Ø 3/4" (19,05mm)
	Please note:	Total length 63,0 mm
	Offset [mm]:	30
3 776 13 000	Collet chuck Ø 19,05/ER 11	
	Citizen Part-#:	BDS507
	Weight [kg]:	0.110
	Shank size [mm]:	19.05
	Tool adaption:	ER 11
	Coolant:	no
	Please note:	Total length 61,3 mm
3 776 13 001	Collet chuck Ø 19,05/ER 11	
	Citizen Part-#:	BDS607
	Weight [kg]:	0.120
	Version:	long L
	Shank size [mm]:	19.05
	Tool adaption:	ER 11
	Coolant:	no
	Please note:	Total length 73,3 mm
3 776 13 002	Collet chuck Ø 19,05/ER 11	
	Citizen Part-#:	BDS707
	Weight [kg]:	0.090
	Version:	short S
	Shank size [mm]:	19.05
	Tool adaption:	ER 11
	Coolant:	no
	Please note:	Total length 54,3 mm
3 776 13 003	Collet chuck Ø 19,05/ER 11	
	Citizen Part-#:	VDS506
	Weight [kg]:	0.142
	Version:	long XL
	Shank size [mm]:	19.05
	Tool adaption:	ER 11
	Coolant:	no
	Please note:	Total length 84,8 mm
3 776 13 004	Doppel-collet chuck Ø 19,05/ER 11	
	Citizen Part-#:	HDS5406
	Weight [kg]:	0.070
	Version:	short S
	Shank size [mm]:	19.05
	Tool adaption:	ER 11
		ER 11
	Coolant:	no
	Please note:	Total length 65,0 mm

Part-#	Name	
3 776 13 005	Doppel-collet chuck Ø 19,05/ER 11	
	Citizen Part-#:	HDS5506
	Weight [kg]:	0.100
	Version:	long L
	Shank size [mm]:	19.05
	Tool adaption:	ER 11
		ER 11
	Coolant:	no
	Please note:	Total length 85,0 mm
3 776 13 006	Doppel-collet chuck Ø 19,05/ER 11	
	Citizen Part-#:	HDS5706
	Version:	long XL
	Shank size [mm]:	19.05
	Tool adaption:	ER 11
		ER 11
	Coolant:	no
	Please note:	Total length 110,0 mm
3 776 13 007	Doppel-collet chuck Ø 19,05/ER 11	
	Citizen Part-#:	HDS5806
	Version:	long XL
	Shank size [mm]:	19.05
	Tool adaption:	ER 11
		ER 11
	Coolant:	no
	Please note:	Total length 130,0 mm
3 776 13 008	Collet chuck Ø 19,05/ER 11	
	Citizen Part-#:	LDS107
	Weight [kg]:	0.250
	Version:	long XXL
	Shank size [mm]:	19.05
	Tool adaption:	ER 11
	Coolant:	no
	Please note:	Total length 141,0 mm
3 776 14 000	Collet chuck Ø 19,05/ER 16	
	Citizen Part-#:	BDS508
	Weight [kg]:	0.112
	Shank size [mm]:	19.05
	Tool adaption:	ER 16
	Coolant:	no
	Please note:	Total length 65,3 mm
3 776 14 001	Collet chuck Ø 19,05/ER 16	
	Citizen Part-#:	BDS610
	Weight [kg]:	0.120
	Version:	long L
	Shank size [mm]:	19.05
	Tool adaption:	ER 16
	Coolant:	no
	Please note:	Total length 80,3 mm

Part-#	Name	
3 776 14 002	Collet chuck Ø 19,05/ER 16 M	
	Citizen Part-#:	GDS110
	Weight [kg]:	0.126
	Shank size [mm]:	19.05
	Tool adaption:	ER 16 M
	Coolant:	no
	Please note:	Total length 93,2 mm
3 776 14 003	Collet chuck Ø 19,05/ER 16	
	Citizen Part-#:	VDS110
	Weight [kg]:	0.140
	Version:	long XL
	Shank size [mm]:	19.05
	Tool adaption:	ER 16
	Coolant:	no
	Please note:	Total length 90,0 mm
3 776 14 004	Collet chuck Ø 19,05/ER 16	
	Citizen Part-#:	LDS110
	Weight [kg]:	0.240
	Version:	long XXL
	Shank size [mm]:	19.05
	Tool adaption:	ER 16
	Coolant:	no
	Please note:	Total length 140,0 mm
3 776 23 001	Collet chuck Ø 25/ER 11	
	Citizen Part-#:	GDS107
	Weight [kg]:	0.330
	Shank size [mm]:	25.00
	Shank type:	BMT
	Tool adaption:	ER 11
	Coolant:	no
	Please note:	Total length 116,0 mm
3 776 24 011	Collet chuck Ø 25/ER 16 M	
	Citizen Part-#:	GDS210
	Weight [kg]:	0.150
	Shank size [mm]:	25.00
	Shank type:	BMT
	Tool adaption:	ER 16 M
	Coolant:	no
	Please note:	Total length 61,2 mm
3 776 24 015	Collet chuck Ø 25/ER 20 M	
	Weight [kg]:	0.170
	Shank size [mm]:	25.00
	Shank type:	BMT
	Tool adaption:	ER 20 M
	Coolant:	no
	Please note:	Total length 63,5 mm

Part-#	Name
--------	------

3 778 13 000

Tapping chuck Ø 19,05/ER 11



Citizen Part-#:

Notation:

Version:

Shank size [mm]:

Tool adaption:

Coolant:

Please note:

BNS407

with length compensation 8 mm

short S

19.05

ER 11

no

incl. per 1x Schneideisenaufnahme ø16x5 / 86,0 mm and

3 778 13 001

Tapping chuck Ø 19,05/ER 11



Citizen Part-#:

Notation:

Version:

Shank size [mm]:

Tool adaption:

Coolant:

Please note:

VNS406

with length compensation 8 mm

long L

19.05

ER 11

no

incl. per 1x Schneideisenaufnahme ø16x5 /119,5 mm and



● heimatec overseas branches

○ global representations of heimatec

heimatec[®]

heimatec GmbH
Präzisionswerkzeuge
Carl-Benz-Str. 4
77871 Renchen
Germany

T +49 7843 9466 0
www.heimatec.com
info@heimatec.com

Please find the contact details of our worldwide trading partners on our website:
<https://heimatec.com/business-partners>