

TOPSELLER -
many more available!

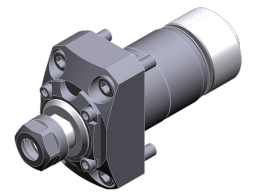
Live Tools

heimatec®

Citizen Cincom L32

Part-#	Tool adaption	Rotation max [1/min]	Gear ratio	Coolant	Pressure max.	Center distance
Axial drilling and milling head						
3 013 33 000	ER 11	48.000	1:4	no	--	--
3 013 33 002	ER 11	48.000	1:4	no	--	--
3 013 33 005	ER 11	48.000	1:4	no	--	--
3 010 34 000 <i>GSC1310</i>	ER 16 M	10.000	1:1	no	--	--
3 010 34 004	ER 16 M	8.000	1:1	no	--	--
3 010 34 006	ER 16 M	6.000	1:1	IC	100 bar	--
Woodruff keycutter						
3 037 34 000 <i>GSE1910</i>	ER 16 M	8.000	1:1	no	--	103,5 mm
Multispindle drilling head						
3 050 33 000 <i>GSC1607</i>	ER 11	8.000	1:1	no	--	--
Multispindle radial head						
3 053 33 000 <i>BSE607</i>	ER 11	12.000	1:1	no	--	--
3 059 33 000 <i>GSE3707</i>	ER 11	8.000	1:1	no	--	--
3 059 33 002 <i>BSE707</i>	ER 11	12.000	1:1	no	--	--
3 059 33 004 <i>GSE4007</i>	ER 11	9.000	1:1	no	--	--
3 053 34 000 <i>GSE1610</i>	ER 16 M	8.000	1:1	no	--	--
3 053 34 005	ER 16 M	8.000	1:1	IC	140 bar	--
3 059 34 000 <i>GSE1810</i>	ER 16 M	8.000	1:1	no	--	--
3 059 34 001 <i>GSE2010</i>	ER 16 M	8.000	1:1	no	--	--

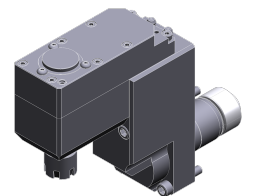
Illustrations similar.



3 013 33 000



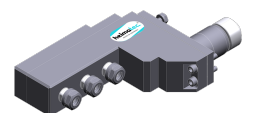
3 013 33 002



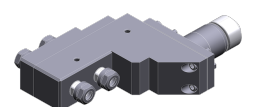
3 037 34 000



3 050 33 000



3 053 33 000



3 059 33 000

TOPSELLER -
many more available!

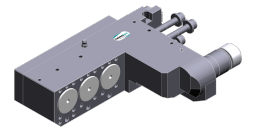
Live Tools

heimatec®

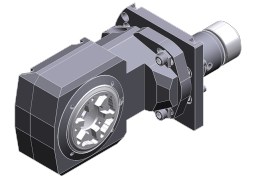
Citizen Cincom L32

Part-#	Tool adaption	Rotation max [1/min]	Gear ratio	Coolant	Pressure max.	Center distance
Multispindle adapter						
3 053 37 000 <i>GSE3210</i>	Interface Ø 31,0	8.000	1:1	no	--	--
Radial whirling unit						
3 068 34 001	HW 46	8.000	1:1	no	--	89,5 mm

Illustrations similar.



3 053 37 000



3 068 34 001

TOPSELLER -
many more available!

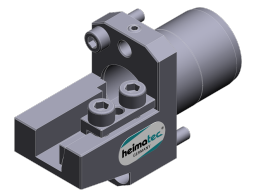
Static Tools

heimatec®

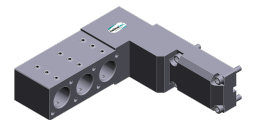
Citizen Cincom L32

Part-#	Tool adaption	Rotation max [1/min]	Coolant
Turning holder			
3 214 34 000	Sq. 12	--	no
Multiple boring bar holder			
3 253 37 000	Ø 1" (25,4mm)	--	no
3 253 37 001	Ø 1" (25,4mm) <i>GDF1601</i>	--	no
3 253 37 008	Ø 1" (25,4mm)	--	no
3 253 35 000	Ø 3/4" (19,05mm) <i>GDF1207</i>	--	no
3 253 35 001	Ø 3/4" (19,05mm) <i>GDF508</i>	--	no
Plug			
3 700 30 000		8.000	no
Reducing sleeve			
3 732 21 001	DIN 228 - MK 1 <i>ADS112</i>	--	
3 732 22 000	DIN 228 - MK 2 <i>ADS212</i>	--	
3 732 21 000	Ø 4 <i>ABS104</i>	--	
3 732 23 001	Ø 10 <i>ABS110</i>	--	
3 732 23 000	Ø 8 <i>ABS108</i>	--	
Adapter bushing			
3 732 27 000	Ø 1" (25,4mm) <i>SAU825</i>	--	

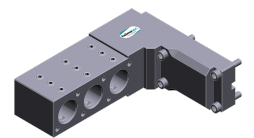
Illustrations similar.



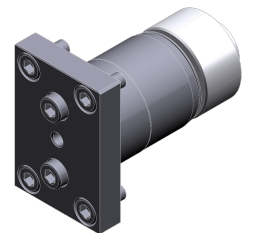
3 214 34 000



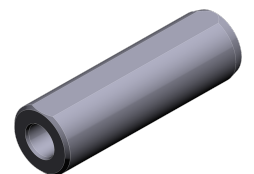
3 253 37 000



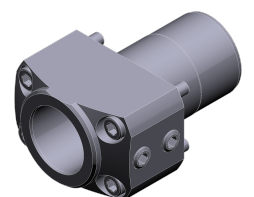
3 253 37 001



3 700 30 000



3 732 21 001



3 732 27 000

TOPSELLER -
many more available!

Static Tools

heimatec®

Citizen Cincom L32

Part-#	Tool adaption	Rotation max [1/min]	Coolant
3 732 25 002 <i>SAU720</i>	Ø 20	--	
3 732 25 001 <i>SAU719</i>	Ø 3/4" (19,05mm)	--	
Chuck			
3 736 22 000 <i>ADS206</i>	Short drill chuck 0,6-6,0-		
Collet chuck			
3 776 13 000 <i>BDS507</i>	ER 11	--	no
3 776 13 001 <i>BDS607</i>	ER 11	--	no
3 776 13 002 <i>BDS707</i>	ER 11	--	no
3 776 13 003 <i>VDS506</i>	ER 11	--	no
3 776 23 000 <i>ADS707</i>	ER 11	--	no
3 776 14 000 <i>BDS508</i>	ER 16	--	no
3 776 14 001 <i>BDS610</i>	ER 16	--	no
3 776 14 003 <i>VDS110</i>	ER 16	--	no
3 776 24 002 <i>ADS110</i>	ER 16	--	no
3 776 24 003 <i>ADS210</i>	ER 16	--	no
3 776 24 004 <i>ADS410</i>	ER 16	--	no

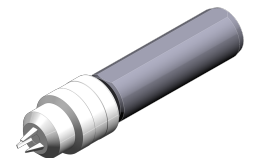
Illustrations similar.



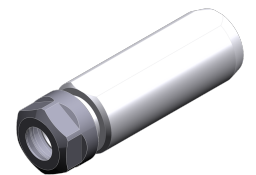
3 732 25 001



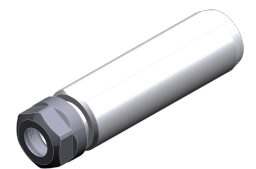
3 732 25 002



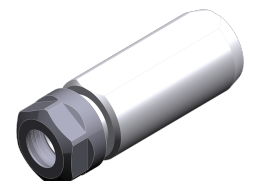
3 736 22 000



3 776 13 000



3 776 13 001



3 776 13 002

TOPSELLER -
many more available!

Static Tools

heimatec®

Citizen

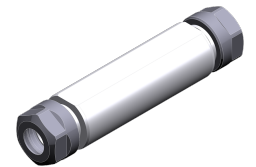
Cincom L32

Part-#	Tool adaption	Rotation max [1/min]	Coolant
3 776 14 002 <i>GDS110</i>	ER 16 M	--	no
3 776 24 000 <i>ADS810</i>	ER 16 M	--	no
3 776 24 001 <i>ADS710</i>	ER 16 M	--	no
3 776 24 006 <i>ADS213</i>	ER 20	--	no
3 776 24 005 <i>ADS113</i>	ER 20 M	--	no
3 776 25 000 <i>RDS116</i>	ER 25	--	no
Doppel-collet chuck			
3 776 13 004 <i>HDS5406</i>	ER 11	--	no
3 776 13 005 <i>HDS5506</i>	ER 11	--	no
3 776 13 006 <i>HDS5706</i>	ER 11	--	no
3 776 13 007 <i>HDS5806</i>	ER 11	--	no
3 776 24 008 <i>ADS310</i>	ER 16	--	no
3 776 24 010 <i>ADS1010</i>	ER 16	--	no
3 776 24 007 <i>ADS1110</i>	ER 16 M	--	no
3 776 24 009 <i>ADS1410</i>	ER 16 M	--	no

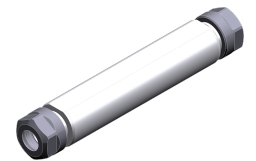
Illustrations similar.



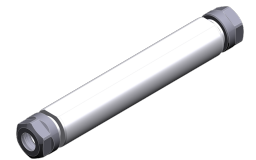
3 776 13 004



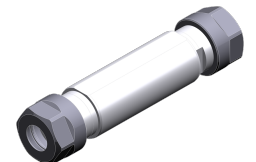
3 776 13 005



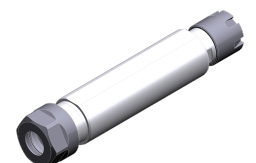
3 776 13 006



3 776 13 007



3 776 24 008



3 776 24 010

TOPSELLER -
many more available!

Static Tools

heimatec®

Citizen Cincom L32

Part-#	Tool adaption	Rotation max [1/min]	Coolant
Tapping chuck			
3 778 13 000 <i>BNS407</i>	ER 11	--	no
3 778 13 001 <i>VNS406</i>	ER 11	--	no
3 778 23 000 <i>ATS210</i>	ER 11	--	no
3 778 23 001 <i>ATS307</i>	ER 11	--	no
3 778 24 000 <i>ATS112</i>	ER 16	--	no
Die chuck			
3 778 26 001 <i>AUS106</i>	Ø 20,0x 7,0	--	no
3 778 27 000 <i>AUS110</i>	Ø 25,0x 9,0	--	no
3 778 28 000 <i>AUS112</i>	Ø 38,0x13,0	--	no

Illustrations similar.



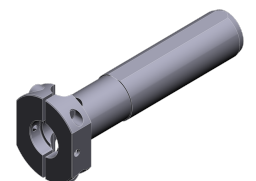
3 778 13 000



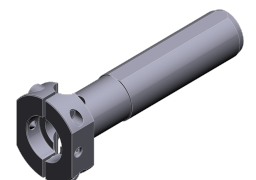
3 778 13 001



3 778 23 000



3 778 26 001



3 778 27 000