

Citizen
Cincom L32



High-tech from heimatec - heimatec - Tools and systems for productive turning and milling

heimatec belongs to the international technology and quality leaders for precision tools and specializes in the development and production of high-precision static and live tools for all CNC lathes, CNC turn-/mill machines and CNC machining centers.

The range of products* spans from static BMT and VDI tool holders, live tools up to highly complex customer-specific individual solutions. heimatec, headquartered in Renchen, has a own subsidiary in Asia and India and numerous representatives as well as trading partners all over the world.

*OUR PRODCUTS

Static tool holders

Live tool units

Precision tools

Tools for turning and machining centres

Tools for swiss type lathes

Tool changing and uick-change systems

Tool systems for gear production

Digital tool management

This catalogue, including all its parts, is protected by copyright. Any use outside the restricted limitations of the Copyright Act without the consent of heimatec is inadmissible and liable to prosecution. This applies in particular to duplication, translation, microfilming and storage and processing in electronic systems.

heimatec GmbH reserves the right to make technical changes at any time without giving prior notice. This applies in particular to adjustments at any time to meet new or changed international standards, or in case of further developments of our products or manufacturing processes.

The current version of our General Terms and Conditions can be found on our website.

Part-#	Name
--------	------

3 010 34 000



Axial drilling and milling head ER 16 M

Citizen Part-#:	GSC1310
Weight [kg]:	0.600
Tool drive:	Gear
Shank size [mm]:	31.00
Shank type:	BMT
Tool adaption:	ER 16 M
Gear ratio [i]:	1:1
Torque max [Nm]:	20
Rotation max [1/min]:	10000
Rotating direction:	same
Coolant:	no
Please note:	stronger bearing, dimension turret face to front edge

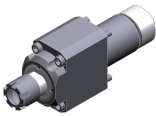
3 010 34 004



Axial drilling and milling head ER 16 M

Weight [kg]:	0.790
Tool drive:	Gear
Shank size [mm]:	31.00
Shank type:	BMT
Tool adaption:	ER 16 M
Gear ratio [i]:	1:1
Torque max [Nm]:	20
Rotation max [1/min]:	8000
Rotating direction:	same
Coolant:	no
Please note:	stronger bearing, dimension turret face to front edge

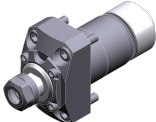
3 010 34 006



Axial drilling and milling head ER 16 M IC

Weight [kg]:	0.940
Tool drive:	Gear
Shank size [mm]:	31.00
Shank type:	BMT
Tool adaption:	ER 16 M
Gear ratio [i]:	1:1
Torque max [Nm]:	20
Rotation max [1/min]:	6000
Rotating direction:	same
Coolant:	IC
Pressure max [bar]:	100
Please note:	stronger bearing, dimension turret face to front edge

3 013 33 000



Axial drilling and milling head ER 11

Weight [kg]:	0.560
Tool drive:	Gear
Shank size [mm]:	31.00
Shank type:	BMT
Tool adaption:	ER 11
Gear ratio [i]:	1:4
Torque max [Nm]:	2,5
Rotation max [1/min]:	48000
Rotating direction:	same
Coolant:	no

Part-#	Name
--------	------

3 013 33 002



Axial drilling and milling head ER 11

Weight [kg]: 0.620
 Tool drive: Gear
 Shank size [mm]: 31.00
 Shank type: BMT
 Tool adaption: ER 11
 Gear ratio [i]: 1:4
 Torque max [Nm]: 2,5
 Rotation max [1/min]: 48000
 Rotating direction: same
 Coolant: no

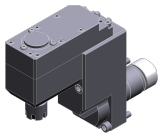
3 013 33 005



Axial drilling and milling head ER 11

Weight [kg]: 0.800
 Tool drive: Gear
 Shank size [mm]: 31.00
 Shank type: BMT
 Tool adaption: ER 11
 Gear ratio [i]: 1:4
 Torque max [Nm]: 2,5
 Rotation max [1/min]: 48000
 Rotating direction: same
 Coolant: no

3 037 34 000



Woodruff keycutter ER 16 M

Citizen Part-#: GSE1910
 Weight [kg]: 3.930
 Notation: 90° adjustable
 Tool drive: Gear
 Shank size [mm]: 31.00
 Shank type: BMT
 Tool adaption: ER 16 M
 Gear ratio [i]: 1:1
 Torque max [Nm]: 12
 Rotation max [1/min]: 8000
 Rotating direction: opposite
 Coolant: no
 Please note: stronger bearing; incl. arbor
 Center distance [mm]: 103,5

3 050 33 000



Multispindle drilling head ER 11

Citizen Part-#: GSC1607
 Weight [kg]: 1.390
 Version: 2-spindles
 Tool drive: Gear
 Shank size [mm]: 31.00
 Shank type: BMT
 Tool adaption: ER 11
 Gear ratio [i]: 1:1
 Torque max [Nm]: 16
 Rotation max [1/min]: 8000
 Rotating direction: same
 Coolant: no
 Please note: stronger bearing
 Offset [mm]: 0/31

Part-#	Name
--------	------

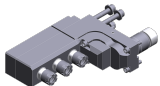
3 053 33 000



Multispindle radial head ER 11

Citizen Part-#: BSE607
 Version: 3-spindles
 Tool drive: Gear
 Shank size [mm]: 31.00
 Shank type: BMT
 Tool adaption: ER 11
 ER 11
 ER 11
 Gear ratio [i]: 1:1
 Torque max [Nm]: 10
 Rotation max [1/min]: 12000
 Rotating direction: same/opposite
 Coolant: no
 Please note: stronger bearing
 Center distance [mm]: 76,5/106,5/136,5

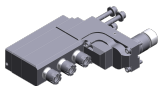
3 053 34 000



Multispindle radial head ER 16 M

Citizen Part-#: GSE1610
 Weight [kg]: 4.720
 Notation: 90° adjustable
 Version: 3-spindles
 Tool drive: Gear
 Shank size [mm]: 31.00
 Shank type: BMT
 Tool adaption: ER 16 M
 ER 16 M
 ER 16 M
 Gear ratio [i]: 1:1
 Torque max [Nm]: 12
 Rotation max [1/min]: 8000
 Rotating direction: same/opposite
 Coolant: no
 Please note: stronger bearing
 Center distance [mm]: 78/114/150

3 053 34 005

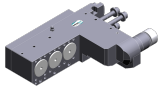


Multispindle radial head ER 16 M IC

Weight [kg]: 5.420
 Notation: 90° adjustable
 Version: 3-spindles
 Tool drive: Gear
 Shank size [mm]: 31.00
 Shank type: BMT
 Tool adaption: ER 16 M
 ER 16 M
 ER 16 M
 Gear ratio [i]: 1:1
 Torque max [Nm]: 12
 Rotation max [1/min]: 8000
 Rotating direction: same/opposite
 Coolant: IC
 Pressure max [bar]: 140
 Please note: stronger bearing; check applicability!
 Center distance [mm]: 78/114/150

Part-#	Name
--------	------

3 053 37 000



Multispindle adapter Ø 31

Citizen Part-#: GSE3210
 Weight [kg]: 6.500
 Notation: 90° adjustable
 Version: 3-spindles
 Tool drive: Gear
 Shank size [mm]: 31.00
 Shank type: BMT
 Tool adaption: Interface Ø 31,0
 Interface Ø 31,0
 Interface Ø 31,0
 Gear ratio [i]: 1:1
 Torque max [Nm]: 12
 Rotation max [1/min]: 8000
 Rotating direction: opposite
 Coolant: no
 Center distance [mm]: 88,5/125,5/162,5

3 059 33 000



Multispindle radial head ER 11

Citizen Part-#: GSE3707
 Version: 2 x double spindle
 Tool drive: Gear
 Shank size [mm]: 31.00
 Shank type: BMT
 Tool adaption: ER 11
 ER 11
 ER 11
 ER 11
 Gear ratio [i]: 1:1
 Torque max [Nm]: 10
 Rotation max [1/min]: 8000
 Rotating direction: same/opposite
 Coolant: no
 Please note: stronger bearing
 Center distance [mm]: 76,5/106,5

3 059 33 002



Multispindle radial head ER 11

Citizen Part-#: BSE707
 Version: 3 x double spindle
 Tool drive: Gear
 Shank size [mm]: 31.00
 Shank type: BMT
 Tool adaption: ER 11
 ER 11
 ER 11
 ER 11
 ER 11
 ER 11
 ER 11
 Gear ratio [i]: 1:1
 Torque max [Nm]: 10
 Rotation max [1/min]: 12000
 Rotating direction: same/opposite
 Coolant: no
 Please note: stronger bearing
 Center distance [mm]: 76,5/106,5/136,5

Part-#	Name
--------	------

3 059 33 003



Multispindle radial head ER 11

Citizen Part-#: GSE3907
 Version: 2 x double spindle
 Tool drive: Gear
 Shank size [mm]: 31.00
 Shank type: BMT
 Tool adaption: ER 11
 ER 11
 ER 11
 ER 11
 ER 11
 Gear ratio [i]: 1:1
 Torque max [Nm]: 10
 Rotation max [1/min]: 9000
 Rotating direction: same/opposite
 Coolant: no
 Please note: stronger bearing
 Center distance [mm]: 76,5/106,5

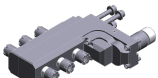
3 059 33 004



Multispindle radial head ER 11

Citizen Part-#: GSE4007
 Version: 3 x double spindle
 Tool drive: Gear
 Shank size [mm]: 31.00
 Shank type: BMT
 Tool adaption: ER 11
 ER 11
 ER 11
 ER 11
 ER 11
 ER 11
 ER 11
 Gear ratio [i]: 1:1
 Torque max [Nm]: 10
 Rotation max [1/min]: 9000
 Rotating direction: same/opposite
 Coolant: no
 Please note: stronger bearing
 Center distance [mm]: 76,5/94,5/112,5
 Offset [mm]: 0/24/0

3 059 34 000



Multispindle radial head ER 16 M

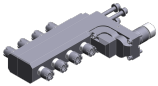
Citizen Part-#: GSE1810
 Weight [kg]: 5.230
 Notation: 90° adjustable
 Version: 3 x double spindle
 Tool drive: Gear
 Shank size [mm]: 31.00
 Shank type: BMT
 Tool adaption: ER 16 M
 ER 16 M
 ER 16 M
 ER 16 M
 ER 16 M
 ER 16 M
 ER 16 M
 Gear ratio [i]: 1:1
 Torque max [Nm]: 12
 Rotation max [1/min]: 8000
 Rotating direction: same/opposite

Part-#	Name
--------	------

Coolant: no
Please note: stronger bearing
Center distance [mm]: 81/120/159

3 059 34 001

Multispindle radial head ER 16 M

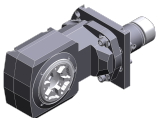


Citizen Part-#: GSE2010
Weight [kg]: 6.080
Notation: 90° adjustable
Version: 4 x double spindle
Tool drive: Gear
Shank size [mm]: 31.00
Shank type: BMT
Tool adaption: ER 16 M
ER 16 M
ER 16 M
ER 16 M
ER 16 M
ER 16 M
ER 16 M
ER 16 M
ER 16 M

Gear ratio [i]: 1:1
Torque max [Nm]: 12
Rotation max [1/min]: 8000
Rotating direction: same/opposite
Coolant: no
Please note: stronger bearing
Center distance [mm]: 81/120/159/198

3 068 34 001

Radial whirling unit HW 46



Tool drive: Gear
Shank size [mm]: 31.00
Shank type: BMT
Tool adaption: HW 46
Gear ratio [i]: 1:1
Torque max [Nm]: 16
Rotation max [1/min]: 8000
Rotating direction: same
Coolant: no
Please note: Check applicability; without cutting inserts carrier
Center distance [mm]: 89,5

3 214 34 000

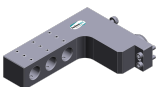
Turning holder sq. 12



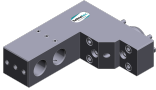

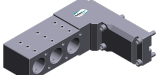
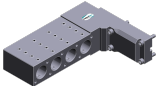
Weight [kg]: 0.420
Shank size [mm]: 31.00
Shank type: BMT
Tool adaption: Sq. 12
Coolant: no

3 253 35 000

Multiple boring bar holder Ø 3/4"



Citizen Part-#: GDF1207
Weight [kg]: 2.340
Notation: offset
Shank size [mm]: 31.00
Shank type: BMT
Tool adaption: Ø 3/4" (19,05mm)

Part-#	Name	
		Ø 3/4" (19,05mm) Ø 3/4" (19,05mm) no 76,5/106,5/136,5
	Coolant:	
	Center distance [mm]:	
3 253 35 001	Multiple boring bar holder Ø 3/4"	
	Citizen Part-#:	GDF508
	Weight [kg]:	1.990
	Notation:	offset
	Shank size [mm]:	31.00
	Shank type:	BMT
	Tool adaption:	Ø 3/4" (19,05mm) Ø 3/4" (19,05mm)
	Coolant:	no
	Center distance [mm]:	78/108
3 253 37 000	Multiple boring bar holder Ø 1"	
	Notation:	offset
	Shank size [mm]:	31.00
	Shank type:	BMT
	Tool adaption:	Ø 1" (25,4mm) Ø 1" (25,4mm) Ø 1" (25,4mm)
	Coolant:	no
	Center distance [mm]:	78/114/150
3 253 37 001	Multiple boring bar holder Ø 1"	
	Citizen Part-#:	GDF1601
	Weight [kg]:	3.600
	Notation:	offset
	Shank size [mm]:	31.00
	Shank type:	BMT
	Tool adaption:	Ø 1" (25,4mm) Ø 1" (25,4mm) Ø 1" (25,4mm)
	Coolant:	no
	Center distance [mm]:	78/114/150
3 253 37 008	Multiple boring bar holder Ø 1"	
	Weight [kg]:	5.120
	Notation:	offset
	Shank size [mm]:	31.00
	Shank type:	BMT
	Tool adaption:	Ø 1" (25,4mm) Ø 1" (25,4mm) Ø 1" (25,4mm) Ø 1" (25,4mm)
	Coolant:	no
	Center distance [mm]:	78/114/150/186

Part-#	Name	
3 700 30 000	Plug with spur gear Ø 31,0	
	Citizen Part-#:	GSD107
	Weight [kg]:	0.390
	Tool drive:	Gear
	Shank size [mm]:	31.00
	Shank type:	BMT
	Torque max [Nm]:	20
	Rotation max [1/min]:	8000
	Rotating direction:	same
	Coolant:	no
3 732 21 000	Reducing sleeve 25,4/ 4/130	
	Citizen Part-#:	ABS104
	Shank size [mm]:	25.40
	Tool adaption:	Ø 4
	Please note:	Total length 130,0 mm
3 732 21 001	Reducing sleeve 25,4/MK1/80	
	Citizen Part-#:	ADS112
	Weight [kg]:	0.256
	Shank size [mm]:	25.40
	Tool adaption:	DIN 228 - MK 1
	Please note:	Total length 80,0 mm
3 732 22 000	Reducing sleeve 25,4/MK2/80	
	Citizen Part-#:	ADS212
	Shank size [mm]:	25.40
	Tool adaption:	DIN 228 - MK 2
	Please note:	Total length 80,0 mm
3 732 23 000	Reducing sleeve 25,4/ 8/130	
	Citizen Part-#:	ABS108
	Weight [kg]:	0.430
	Shank size [mm]:	25.40
	Tool adaption:	Ø 8
	Please note:	Total length 130,0 mm
3 732 23 001	Reducing sleeve 25,4/10/100	
	Citizen Part-#:	ABS110
	Weight [kg]:	0.327
	Shank size [mm]:	25.40
	Tool adaption:	Ø 10
	Please note:	Total length 100,0 mm

Part-#	Name	
3 732 25 001	Adapter bushing 25,4/19,05/80	
	Citizen Part-#:	SAU719
	Weight [kg]:	0.140
	Shank size [mm]:	25.40
	Tool adaption:	Ø 3/4" (19,05mm)
	Please note:	Total length 80,0 mm
3 732 25 002	Adapter bushing 25,4/20/80	
	Citizen Part-#:	SAU720
	Weight [kg]:	0.100
	Shank size [mm]:	25.40
	Tool adaption:	Ø 20
	Please note:	Total length 80,0 mm
3 732 27 000	Adapter bushing 31/25,4/73,5	
	Citizen Part-#:	SAU825
	Weight [kg]:	0.390
	Shank size [mm]:	31.00
	Shank type:	BMT
	Tool adaption:	Ø 1" (25,4mm)
	Please note:	Total length 73,5 mm
3 736 22 000	Chuck 25,4/Ø 0,6 - 6,0	
	Citizen Part-#:	ADS206
	Shank size [mm]:	25.40
	Tool adaption:	Short drill chuck 0,6-6,0
	Please note:	Total length 124,0 mm
3 776 13 000	Collet chuck Ø 19,05/ER 11	
	Citizen Part-#:	BDS507
	Weight [kg]:	0.110
	Shank size [mm]:	19.05
	Tool adaption:	ER 11
	Coolant:	no
	Please note:	Total length 61,3 mm
3 776 13 001	Collet chuck Ø 19,05/ER 11	
	Citizen Part-#:	BDS607
	Weight [kg]:	0.120
	Version:	long L
	Shank size [mm]:	19.05
	Tool adaption:	ER 11
	Coolant:	no
	Please note:	Total length 73,3 mm

Part-#	Name	
3 776 13 002	Collet chuck Ø 19,05/ER 11	
	Citizen Part-#:	BDS707
	Weight [kg]:	0.090
	Version:	short S
	Shank size [mm]:	19.05
	Tool adaption:	ER 11
	Coolant:	no
	Please note:	Total length 54,3 mm
3 776 13 003	Collet chuck Ø 19,05/ER 11	
	Citizen Part-#:	VDS506
	Weight [kg]:	0.142
	Version:	long XL
	Shank size [mm]:	19.05
	Tool adaption:	ER 11
	Coolant:	no
	Please note:	Total length 84,8 mm
3 776 13 004	Doppel-collet chuck Ø 19,05/ER 11	
	Citizen Part-#:	HDS5406
	Weight [kg]:	0.070
	Version:	short S
	Shank size [mm]:	19.05
	Tool adaption:	ER 11
		ER 11
	Coolant:	no
	Please note:	Total length 65,0 mm
3 776 13 005	Doppel-collet chuck Ø 19,05/ER 11	
	Citizen Part-#:	HDS5506
	Weight [kg]:	0.100
	Version:	long L
	Shank size [mm]:	19.05
	Tool adaption:	ER 11
		ER 11
	Coolant:	no
	Please note:	Total length 85,0 mm
3 776 13 006	Doppel-collet chuck Ø 19,05/ER 11	
	Citizen Part-#:	HDS5706
	Version:	long XL
	Shank size [mm]:	19.05
	Tool adaption:	ER 11
		ER 11
	Coolant:	no
	Please note:	Total length 110,0 mm
3 776 13 007	Doppel-collet chuck Ø 19,05/ER 11	
	Citizen Part-#:	HDS5806
	Version:	long XL
	Shank size [mm]:	19.05
	Tool adaption:	ER 11
		ER 11
	Coolant:	no
	Please note:	Total length 130,0 mm

Part-#	Name	
3 776 14 000	Collet chuck Ø 19,05/ER 16	
	Citizen Part-#:	BDS508
	Weight [kg]:	0.112
	Shank size [mm]:	19.05
	Tool adaption:	ER 16
	Coolant:	no
	Please note:	Total length 65,3 mm
3 776 14 001	Collet chuck Ø 19,05/ER 16	
	Citizen Part-#:	BDS610
	Weight [kg]:	0.120
	Version:	long L
	Shank size [mm]:	19.05
	Tool adaption:	ER 16
	Coolant:	no
	Please note:	Total length 80,3 mm
3 776 14 002	Collet chuck Ø 19,05/ER 16 M	
	Citizen Part-#:	GDS110
	Weight [kg]:	0.126
	Shank size [mm]:	19.05
	Tool adaption:	ER 16 M
	Coolant:	no
	Please note:	Total length 93,2 mm
3 776 14 003	Collet chuck Ø 19,05/ER 16	
	Citizen Part-#:	VDS110
	Weight [kg]:	0.140
	Version:	long XL
	Shank size [mm]:	19.05
	Tool adaption:	ER 16
	Coolant:	no
	Please note:	Total length 90,0 mm
3 776 23 000	Collet chuck Ø 25,4/ER 11	
	Citizen Part-#:	ADS707
	Shank size [mm]:	25.40
	Tool adaption:	ER 11
	Coolant:	no
	Please note:	Total length 91,0 mm
3 776 24 000	Collet chuck Ø 25,4/ER 16 M	
	Citizen Part-#:	ADS810
	Version:	short S
	Shank size [mm]:	25.40
	Tool adaption:	ER 16 M
	Coolant:	no
	Please note:	Total length 61,0 mm

Part-#	Name	
3 776 24 001	Collet chuck Ø 25,4/ER 16 M	
	Citizen Part-#:	ADS710
	Weight [kg]:	0.300
	Version:	long L
	Shank size [mm]:	25.40
	Tool adaption:	ER 16 M
	Coolant:	no
	Please note:	Total length 97,0 mm
3 776 24 002	Collet chuck Ø 25,4/ER 16	
	Citizen Part-#:	ADS110
	Shank size [mm]:	25.40
	Tool adaption:	ER 16
	Coolant:	no
	Please note:	Total length 95,0 mm
3 776 24 003	Collet chuck Ø 25,4/ER 16	
	Citizen Part-#:	ADS210
	Weight [kg]:	0.370
	Version:	long L
	Shank size [mm]:	25.40
	Tool adaption:	ER 16
	Coolant:	no
	Please note:	Total length 125,0 mm
3 776 24 004	Collet chuck Ø 25,4/ER 16	
	Citizen Part-#:	ADS410
	Weight [kg]:	0.230
	Version:	short S
	Shank size [mm]:	25.40
	Tool adaption:	ER 16
	Coolant:	no
	Please note:	Total length 85,0 mm
3 776 24 005	Collet chuck Ø 25,4/ER 20 M	
	Citizen Part-#:	ADS113
	Weight [kg]:	0.280
	Shank size [mm]:	25.40
	Tool adaption:	ER 20 M
	Coolant:	no
	Please note:	Total length 109,5 mm
3 776 24 006	Collet chuck Ø 25,4/ER 20	
	Citizen Part-#:	ADS213
	Shank size [mm]:	25.40
	Tool adaption:	ER 20
	Coolant:	no
	Please note:	Total length 109,5 mm

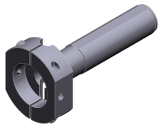
Part-#	Name	
3 776 24 007	Doppel-collet chuck Ø 25,4/ER 16 M	
	Citizen Part-#:	ADS1110
	Version:	short S
	Shank size [mm]:	25.40
	Tool adaption:	ER 16 M ER 16 M
	Coolant:	no
	Please note:	Total length 85, 0 mm
3 776 24 008	Doppel-collet chuck Ø 25,4/ER 16	
	Citizen Part-#:	ADS310
	Version:	long L
	Shank size [mm]:	25.40
	Tool adaption:	ER 16 ER 16
	Coolant:	no
	Please note:	Total length 116,0 mm
3 776 24 009	Doppel-collet chuck Ø 25,4/ER 16 M	
	Citizen Part-#:	ADS1410
	Version:	long L
	Shank size [mm]:	25.40
	Tool adaption:	ER 16 M ER 16 M
	Coolant:	no
	Please note:	Total length 118,0 mm
3 776 24 010	Doppel-collet chuck Ø 25,4/ER 16/M	
	Citizen Part-#:	ADS1010
	Version:	long XL
	Shank size [mm]:	25.40
	Tool adaption:	ER 16
	Coolant:	no
	Please note:	Total length 135,0 mm
3 776 25 000	Collet chuck Ø 25,4/ER 25	
	Citizen Part-#:	RDS116
	Weight [kg]:	0.280
	Shank size [mm]:	25.40
	Tool adaption:	ER 25
	Coolant:	no
	Please note:	Total length 97 mm
3 778 13 000	Tapping chuck Ø 19,05/ER 11	
	Citizen Part-#:	BNS407
	Notation:	with length compensation 8 mm
	Version:	short S
	Shank size [mm]:	19.05
	Tool adaption:	ER 11
	Coolant:	no
	Please note:	incl. per 1x Schneideisenaufnahme ø16x5 / 86,0 mm and

Part-#	Name	
3 778 13 001	Tapping chuck Ø 19,05/ER 11	
	Citizen Part-#: Notation: Version: Shank size [mm]: Tool adaption: Coolant: Please note:	VNS406 with length compensation 8 mm long L 19.05 ER 11 no incl. per 1x Schneideisenaufnahme ø16x5 /119,5 mm and
3 778 23 000	Tapping chuck Ø 25,4/ER 11	
	Citizen Part-#: Notation: Version: Shank size [mm]: Tool adaption: Coolant: Please note:	ATS210 with length compensation 8 mm short S 25.40 ER 11 no Total length 65,0 mm
3 778 23 001	Tapping chuck Ø 25,4/ER 11	
	Citizen Part-#: Notation: Version: Shank size [mm]: Tool adaption: Coolant: Please note:	ATS307 with length compensation 8 mm long L 25.40 ER 11 no Total length 93,0 mm
3 778 24 000	Tapping chuck Ø 25,4/ER 16	
	Citizen Part-#: Weight [kg]: Notation: Shank size [mm]: Tool adaption: Coolant: Please note:	ATS112 0.320 with length compensation 8 mm 25.40 ER 16 no Total length 110,0 mm
3 778 26 001	Die chuck Ø 25,4/ Ø 20,0x 7,0	
	Citizen Part-#: Shank size [mm]: Tool adaption: Coolant: Please note:	AUS106 25.40 Ø 20,0x 7,0 no Total length 130,0 mm
3 778 27 000	Die chuck Ø 25,4/ Ø 25,0x 9,0	
	Citizen Part-#: Shank size [mm]: Tool adaption: Coolant: Please note:	AUS110 25.40 Ø 25,0x 9,0 no Total length 130,0 mm

Citizen
Cincom L32

Part-#	Name
--------	------

3 778 28 000 **Die chuck Ø 25,4/ Ø 38,0x13,0**



Citizen Part-#:

Shank size [mm]:

Tool adaption:

Coolant:

Please note:

AUS112

25.40

Ø 38,0x13,0

no

Total length 130,0 mm



heimatec.u-tec®

heimatec.com

Products / Tool change systems /
u-tec® Tool-changing system



versions see catalog



heimatec.easy-quick

heimatec.com

Products / Tool change systems /
easy-quick HT quick-changing system



versions see catalog



heimatec.Capto™

heimatec.com

Products / Tool change systems /
heimatec.Capto™ quick-changing system



versions see catalog



heimatec.accessories

heimatec.com

Products / Accessories



versions see catalog





● heimatec overseas branches

○ global representations of heimatec

heimatec[®]

heimatec GmbH
Präzisionswerkzeuge
Carl-Benz-Str. 4
77871 Renchen
Germany

T +49 7843 9466 0
www.heimatec.com
info@heimatec.com

Please find the contact details of our worldwide trading partners on our website:
<https://heimatec.com/business-partners>