

Citizen  
**Cincom M(4)32**



# High-tech from heimatec - heimatec - Tools and systems for productive turning and milling

heimatec belongs to the international technology and quality leaders for precision tools and specializes in the development and production of high-precision static and live tools for all CNC lathes, CNC turn-/mill machines and CNC machining centers.

The range of products\* spans from static BMT and VDI tool holders, live tools up to highly complex customer-specific individual solutions. heimatec, headquartered in Renchen, has a own subsidiary in Asia and India and numerous representatives as well as trading partners all over the world.

## \*OUR PRODCUTS

Static tool holders

Live tool units

Precision tools

Tools for turning and machining centres

Tools for swiss type lathes

Tool changing and uick-change systems

Tool systems for gear production

Digital tool management

This catalogue, including all its parts, is protected by copyright. Any use outside the restricted limitations of the Copyright Act without the consent of heimatec is inadmissible and liable to prosecution. This applies in particular to duplication, translation, microfilming and storage and processing in electronic systems.

**heimatec GmbH** reserves the right to make technical changes at any time without giving prior notice. This applies in particular to adjustments at any time to meet new or changed international standards, or in case of further developments of our products or manufacturing processes.

The current version of our General Terms and Conditions can be found on our website.

Part-#	Name
--------	------

**3 010 34 000**

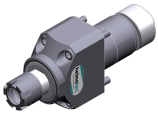
**Axial drilling and milling head ER 16 M**



Citizen Part-#:	GSC1310
Weight [kg]:	0.600
Tool drive:	Gear
Shank size [mm]:	31.00
Shank type:	BMT
Tool adaption:	ER 16 M
Gear ratio [i]:	1:1
Torque max [Nm]:	20
Rotation max [1/min]:	10000
Rotating direction:	same
Coolant:	no
Please note:	stronger bearing, dimension turret face to front edge

**3 010 34 004**

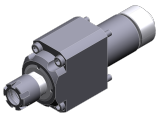
**Axial drilling and milling head ER 16 M**



Weight [kg]:	0.790
Tool drive:	Gear
Shank size [mm]:	31.00
Shank type:	BMT
Tool adaption:	ER 16 M
Gear ratio [i]:	1:1
Torque max [Nm]:	20
Rotation max [1/min]:	8000
Rotating direction:	same
Coolant:	no
Please note:	stronger bearing, dimension turret face to front edge

**3 010 34 006**

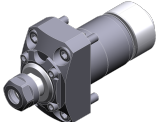
**Axial drilling and milling head ER 16 M IC**



Weight [kg]:	0.940
Tool drive:	Gear
Shank size [mm]:	31.00
Shank type:	BMT
Tool adaption:	ER 16 M
Gear ratio [i]:	1:1
Torque max [Nm]:	20
Rotation max [1/min]:	6000
Rotating direction:	same
Coolant:	IC
Pressure max [bar]:	100
Please note:	stronger bearing, dimension turret face to front edge

**3 013 33 000**

**Axial drilling and milling head ER 11**



Weight [kg]:	0.560
Tool drive:	Gear
Shank size [mm]:	31.00
Shank type:	BMT
Tool adaption:	ER 11
Gear ratio [i]:	1:4
Torque max [Nm]:	2,5
Rotation max [1/min]:	48000
Rotating direction:	same
Coolant:	no

Part-#	Name
--------	------

**3 013 33 002**

**Axial drilling and milling head ER 11**



Weight [kg]: 0.620  
 Tool drive: Gear  
 Shank size [mm]: 31.00  
 Shank type: BMT  
 Tool adaption: ER 11  
 Gear ratio [i]: 1:4  
 Torque max [Nm]: 2,5  
 Rotation max [1/min]: 48000  
 Rotating direction: same  
 Coolant: no

**3 013 33 005**

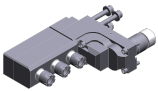
**Axial drilling and milling head ER 11**



Weight [kg]: 0.800  
 Tool drive: Gear  
 Shank size [mm]: 31.00  
 Shank type: BMT  
 Tool adaption: ER 11  
 Gear ratio [i]: 1:4  
 Torque max [Nm]: 2,5  
 Rotation max [1/min]: 48000  
 Rotating direction: same  
 Coolant: no

**3 053 34 000**

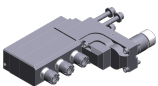
**Multispindle radial head ER 16 M**



Citizen Part-#: GSE1610  
 Weight [kg]: 4.720  
 Notation: 90° adjustable  
 Version: 3-spindles  
 Tool drive: Gear  
 Shank size [mm]: 31.00  
 Shank type: BMT  
 Tool adaption: ER 16 M  
 ER 16 M  
 ER 16 M  
 Gear ratio [i]: 1:1  
 Torque max [Nm]: 12  
 Rotation max [1/min]: 8000  
 Rotating direction: same/opposite  
 Coolant: no  
 Please note: stronger bearing  
 Center distance [mm]: 78/114/150

**3 053 34 005**

**Multispindle radial head ER 16 M IC**

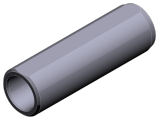







Weight [kg]: 5.420  
 Notation: 90° adjustable  
 Version: 3-spindles  
 Tool drive: Gear  
 Shank size [mm]: 31.00  
 Shank type: BMT  
 Tool adaption: ER 16 M  
 ER 16 M  
 ER 16 M  
 Gear ratio [i]: 1:1  
 Torque max [Nm]: 12  
 Rotation max [1/min]: 8000

Part-#	Name	
	Rotating direction:	same/opposite
	Coolant:	IC
	Pressure max [bar]:	140
	Please note:	stronger bearing; check applicability!
	Center distance [mm]:	78/114/150
<b>3 214 31 002</b>	<b>Turning holder sq. 16</b>	
	Citizen Part-#:	CTF1216
	Weight [kg]:	3.235
	Notation:	180° reversible
	Employment for:	Turret
	Shank size [mm]:	36.00
	Shank type:	BMT
	Tool adaption:	Sq. 16 (5/8")
	Coolant:	EXT
	Offset [mm]:	74 (0)
<b>3 214 31 007</b>	<b>Turning holder sq. 16</b>	
	Citizen Part-#:	CTF1316
	Notation:	180° reversible
	Employment for:	Turret
	Version:	Upside down
	Shank size [mm]:	36.00
	Shank type:	BMT
	Tool adaption:	Sq. 16 (5/8")
	Coolant:	EXT
	Offset [mm]:	74 (0)
<b>3 219 33 000</b>	<b>Adapter for sensor Blum TC 55</b>	
	Employment for:	Turret
	Shank size [mm]:	36.00
	Shank type:	BMT
	Tool adaption:	Blum-sensor TC 55
	Coolant:	no
<b>3 240 37 000</b>	<b>Boring bar holder Ø 1"</b>	
	Notation:	offset
	Shank size [mm]:	36.00
	Shank type:	BMT
	Tool adaption:	Ø 1" (25,4mm)
	Coolant:	IC/Ext
	Center distance [mm]:	70
<b>3 253 37 001</b>	<b>Multiple boring bar holder Ø 1"</b>	
	Citizen Part-#:	GDF1601
	Weight [kg]:	3.600
	Notation:	offset
	Shank size [mm]:	31.00
	Shank type:	BMT
	Tool adaption:	Ø 1" (25,4mm) Ø 1" (25,4mm) Ø 1" (25,4mm)
	Coolant:	no
	Center distance [mm]:	78/114/150




Part-#	Name	
<b>3 253 37 002</b>	<b>Multiple boring bar holder Ø 1"</b>	
	Citizen Part-#:	GDF1501
	Weight [kg]:	3.600
	Notation:	offset
	Shank size [mm]:	31.00
	Shank type:	BMT
	Tool adaption:	Ø 1" (25,4mm)
		Ø 1" (25,4mm)
		Ø 1" (25,4mm)
	Coolant:	no
	Center distance [mm]:	78/114/150
<b>3 253 37 008</b>	<b>Multiple boring bar holder Ø 1"</b>	
	Weight [kg]:	5.120
	Notation:	offset
	Shank size [mm]:	31.00
	Shank type:	BMT
	Tool adaption:	Ø 1" (25,4mm)
		Ø 1" (25,4mm)
		Ø 1" (25,4mm)
		Ø 1" (25,4mm)
	Coolant:	no
	Center distance [mm]:	78/114/150/186
<b>3 259 31 000</b>	<b>Multiple turning holder 2x sq. 16</b>	
	Citizen Part-#:	CTF1116
	Weight [kg]:	4.160
	Notation:	180° reversible
	Employment for:	Turret
	Version:	Y-axes offset
	Shank size [mm]:	36.00
	Shank type:	BMT
	Tool adaption:	Sq. 16
		Sq. 16
	Coolant:	EXT
	Offset [mm]:	74 (0)
		Y+21,0 ; Y-21,0
<b>3 732 21 000</b>	<b>Reducing sleeve 25,4/ 4/130</b>	
	Citizen Part-#:	ABS104
	Shank size [mm]:	25.40
	Tool adaption:	Ø 4
	Please note:	Total length 130,0 mm
<b>3 732 21 001</b>	<b>Reducing sleeve 25,4/MK1/80</b>	
	Citizen Part-#:	ADS112
	Weight [kg]:	0.256
	Shank size [mm]:	25.40
	Tool adaption:	DIN 228 - MK 1
	Please note:	Total length 80,0 mm

Citizen  
Cincom M(4)32

Part-#	Name	
<b>3 732 22 000</b>	<b>Reducing sleeve 25,4/MK2/80</b>	
	Citizen Part-#:	ADS212
	Shank size [mm]:	25.40
	Tool adaption:	DIN 228 - MK 2
	Please note:	Total length 80,0 mm
<b>3 732 23 000</b>	<b>Reducing sleeve 25,4/ 8/130</b>	
	Citizen Part-#:	ABS108
	Weight [kg]:	0.430
	Shank size [mm]:	25.40
	Tool adaption:	Ø 8
	Please note:	Total length 130,0 mm
<b>3 732 23 001</b>	<b>Reducing sleeve 25,4/10/100</b>	
	Citizen Part-#:	ABS110
	Weight [kg]:	0.327
	Shank size [mm]:	25.40
	Tool adaption:	Ø 10
	Please note:	Total length 100,0 mm
<b>3 736 22 000</b>	<b>Chuck 25,4/Ø 0,6 - 6,0</b>	
	Citizen Part-#:	ADS206
	Shank size [mm]:	25.40
	Tool adaption:	Short drill chuck 0,6-6,0
	Please note:	Total length 124,0 mm
<b>3 776 24 002</b>	<b>Collet chuck Ø 25,4/ER 16</b>	
	Citizen Part-#:	ADS110
	Shank size [mm]:	25.40
	Tool adaption:	ER 16
	Coolant:	no
	Please note:	Total length 95,0 mm
<b>3 776 24 003</b>	<b>Collet chuck Ø 25,4/ER 16</b>	
	Citizen Part-#:	ADS210
	Weight [kg]:	0.370
	Version:	long L
	Shank size [mm]:	25.40
	Tool adaption:	ER 16
	Coolant:	no
	Please note:	Total length 125,0 mm

Part-#	Name	
<b>3 776 24 004</b>	<b>Collet chuck Ø 25,4/ER 16</b>	
	Citizen Part-#:	ADS410
	Weight [kg]:	0.230
	Version:	short S
	Shank size [mm]:	25.40
	Tool adaption:	ER 16
	Coolant:	no
	Please note:	Total length 85,0 mm
<b>3 776 24 008</b>	<b>Doppel-collet chuck Ø 25,4/ER 16</b>	
	Citizen Part-#:	ADS310
	Version:	long L
	Shank size [mm]:	25.40
	Tool adaption:	ER 16
		ER 16
	Coolant:	no
	Please note:	Total length 116,0 mm
<b>3 776 25 000</b>	<b>Collet chuck Ø 25,4/ER 25</b>	
	Citizen Part-#:	RDS116
	Weight [kg]:	0.280
	Shank size [mm]:	25.40
	Tool adaption:	ER 25
	Coolant:	no
	Please note:	Total length 97 mm
<b>3 778 23 000</b>	<b>Tapping chuck Ø 25,4/ER 11</b>	
	Citizen Part-#:	ATS210
	Notation:	with length compensation 8 mm
	Version:	short S
	Shank size [mm]:	25.40
	Tool adaption:	ER 11
	Coolant:	no
	Please note:	Total length 65,0 mm
<b>3 778 24 000</b>	<b>Tapping chuck Ø 25,4/ER 16</b>	
	Citizen Part-#:	ATS112
	Weight [kg]:	0.320
	Notation:	with length compensation 8 mm
	Shank size [mm]:	25.40
	Tool adaption:	ER 16
	Coolant:	no
	Please note:	Total length 110,0 mm
<b>3 778 26 001</b>	<b>Die chuck Ø 25,4/ Ø 20,0x 7,0</b>	
	Citizen Part-#:	AUS106
	Shank size [mm]:	25.40
	Tool adaption:	Ø 20,0x 7,0
	Coolant:	no
	Please note:	Total length 130,0 mm

Citizen  
Cincom M(4)32

Part-#	Name	
<b>3 778 27 000</b>	<b>Die chuck Ø 25,4/ Ø 25,0x 9,0</b>	
	Citizen Part-#:	AUS110
	Shank size [mm]:	25.40
	Tool adaption:	Ø 25,0x 9,0
	Coolant:	no
	Please note:	Total length 130,0 mm
<b>3 778 28 000</b>	<b>Die chuck Ø 25,4/ Ø 38,0x13,0</b>	
	Citizen Part-#:	AUS112
	Shank size [mm]:	25.40
	Tool adaption:	Ø 38,0x13,0
	Coolant:	no
	Please note:	Total length 130,0 mm
<b>3 778 28 001</b>	<b>Die chuck Ø 25,4/ Ø 1-1/2"x1/2"</b>	
	Citizen Part-#:	AUS112L
	Tool adaption:	Ø 1 1/2" (38,1mm)x 1/2" (12,7mm)
	Coolant:	no
	Please note:	Total length 130,0 mm (~5-7/64")



## heimatec.u-tec®

heimatec.com

Products / Tool change systems /  
u-tec® Tool-changing system



versions see catalog



## heimatec.easy-quick

heimatec.com

Products / Tool change systems /  
easy-quick HT quick-changing system



versions see catalog



## heimatec.Capto™

heimatec.com

Products / Tool change systems /  
heimatec.Capto™ quick-changing system



versions see catalog



## heimatec.accessories

heimatec.com

Products / Accessories



versions see catalog





● heimatec overseas branches

○ global representations of heimatec

**heimatec**<sup>®</sup>

**heimatec GmbH**  
Präzisionswerkzeuge  
Carl-Benz-Str. 4  
77871 Renchen  
Germany

T +49 7843 9466 0  
[www.heimatec.com](http://www.heimatec.com)  
[info@heimatec.com](mailto:info@heimatec.com)

Please find the contact details of our worldwide trading partners on our website:  
<https://heimatec.com/business-partners>