

Citizen
Cincom M(5)32



High-tech from heimatec - heimatec - Tools and systems for productive turning and milling

heimatec belongs to the international technology and quality leaders for precision tools and specializes in the development and production of high-precision static and live tools for all CNC lathes, CNC turn-/mill machines and CNC machining centers.

The range of products* spans from static BMT and VDI tool holders, live tools up to highly complex customer-specific individual solutions. heimatec, headquartered in Renchen, has a own subsidiary in Asia and India and numerous representatives as well as trading partners all over the world.

*OUR PRODCUTS

Static tool holders

Live tool units

Precision tools

Tools for turning and machining centres

Tools for swiss type lathes

Tool changing and uick-change systems

Tool systems for gear production

Digital tool management

This catalogue, including all its parts, is protected by copyright. Any use outside the restricted limitations of the Copyright Act without the consent of heimatec is inadmissible and liable to prosecution. This applies in particular to duplication, translation, microfilming and storage and processing in electronic systems.

heimatec GmbH reserves the right to make technical changes at any time without giving prior notice. This applies in particular to adjustments at any time to meet new or changed international standards, or in case of further developments of our products or manufacturing processes.

The current version of our General Terms and Conditions can be found on our website.

Part-#	Name
--------	------

3 010 34 005



Axial drilling and milling head ER 20

Citizen Part-#:	KSC113
Weight [kg]:	2.190
Notation:	180° reversible
Employment for:	Turret
Tool drive:	Flat (~DIN 1809)
Shank size [mm]:	36.00
Shank type:	BMT
Tool adaption:	ER 20
Gear ratio [i]:	1:1
Torque max [Nm]:	16
Rotation max [1/min]:	6000
Rotating direction:	same
Coolant:	EXT
Offset [mm]:	(49)

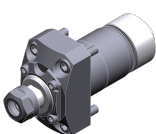
3 010 34 007



Axial drilling and milling head ER 20

Citizen Part-#:	KSC213
Weight [kg]:	1.970
Notation:	180° reversible
Employment for:	Turret
Tool drive:	Flat (~DIN 1809)
Shank size [mm]:	36.00
Shank type:	BMT
Tool adaption:	ER 20
Gear ratio [i]:	1:1
Torque max [Nm]:	16
Rotation max [1/min]:	6000
Rotating direction:	same
Coolant:	EXT
Offset [mm]:	(49)

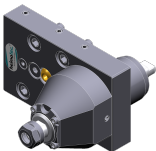
3 013 33 000



Axial drilling and milling head ER 11

Weight [kg]:	0.560
Tool drive:	Gear
Shank size [mm]:	31.00
Shank type:	BMT
Tool adaption:	ER 11
Gear ratio [i]:	1:4
Torque max [Nm]:	2,5
Rotation max [1/min]:	48000
Rotating direction:	same
Coolant:	no

3 013 33 001



Axial drilling and milling head ER 11

Citizen Part-#:	~KSC107-4X
Weight [kg]:	2.090
Notation:	180° reversible
Employment for:	Turret
Version:	long
Tool drive:	Flat (~DIN 1809)
Shank size [mm]:	36.00
Shank type:	BMT
Tool adaption:	ER 11
Gear ratio [i]:	1:4
Torque max [Nm]:	2,5

Part-#	Name
--------	------

Rotation max [1/min]: 48000
 Rotating direction: same
 Coolant: EXT
 Offset [mm]: (49)

3 013 33 002 Axial drilling and milling head ER 11



Weight [kg]: 0.620
 Tool drive: Gear
 Shank size [mm]: 31.00
 Shank type: BMT
 Tool adaption: ER 11
 Gear ratio [i]: 1:4
 Torque max [Nm]: 2,5
 Rotation max [1/min]: 48000
 Rotating direction: same
 Coolant: no

3 013 33 003 Axial drilling and milling head ER 11



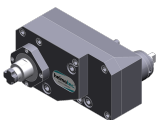
Weight [kg]: 1.720
 Notation: 180° reversible
 Employment for: Turret
 Version: short
 Tool drive: Flat (~DIN 1809)
 Shank size [mm]: 36.00
 Shank type: BMT
 Tool adaption: ER 11
 Gear ratio [i]: 1:4
 Torque max [Nm]: 2,5
 Rotation max [1/min]: 48000
 Rotating direction: same
 Coolant: EXT
 Offset [mm]: (49)

3 013 33 005 Axial drilling and milling head ER 11



Weight [kg]: 0.800
 Tool drive: Gear
 Shank size [mm]: 31.00
 Shank type: BMT
 Tool adaption: ER 11
 Gear ratio [i]: 1:4
 Torque max [Nm]: 2,5
 Rotation max [1/min]: 48000
 Rotating direction: same
 Coolant: no

3 019 33 001 Axial milling head arbor 5/8"

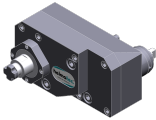


Citizen Part-#: KSS1060
 Notation: 180° reversible
 Employment for: Turret
 Tool drive: Flat (~DIN 1809)
 Shank size [mm]: 36.00
 Shank type: BMT
 Tool adaption: Arbor 5/8" (15,875mm)
 Gear ratio [i]: 4:1
 Torque max [Nm]: 70
 Rotation max [1/min]: 1500

Part-#	Name
--------	------

Rotating direction: same
Coolant: no
Please note: for milling cutter ø 60 mm
Offset [mm]: 93 (44)

3 019 34 001 Axial milling head arbor 16



Citizen Part-#: KSS1063
Notation: 180° reversible
Employment for: Turret
Tool drive: Flat (~DIN 1809)
Shank size [mm]: 36.00
Shank type: BMT
Tool adaption: Arbor 16
Gear ratio [i]: 4:1
Torque max [Nm]: 70
Rotation max [1/min]: 1500
Rotating direction: same
Coolant: no
Please note: for milling cutter ø 63 mm
Offset [mm]: 91,5 (42,5)

3 019 34 003 Axial drilling and milling head ER 20 IC



Citizen Part-#: ~KSC113
Weight [kg]: 4.230
Notation: 180° reversible
Employment for: Turret
Tool drive: Flat (~DIN 1809)
Shank size [mm]: 36.00
Shank type: BMT
Tool adaption: ER 20
Gear ratio [i]: 1:1
Torque max [Nm]: 16
Rotation max [1/min]: 6000
Rotating direction: same
Coolant: IC/Ext
Pressure max [bar]: 140
Offset [mm]: 98 (49)

3 019 34 004 Axial drilling and milling head ER 20 IC

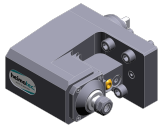


Citizen Part-#: ~KSC213
Notation: 180° reversible
Employment for: Turret
Tool drive: Flat (~DIN 1809)
Shank size [mm]: 36.00
Shank type: BMT
Tool adaption: ER 20
Gear ratio [i]: 1:1
Torque max [Nm]: 16
Rotation max [1/min]: 6000
Rotating direction: same
Coolant: IC/Ext
Pressure max [bar]: 140
Offset [mm]: 98 (49)

Part-#	Name
--------	------

3 030 33 001

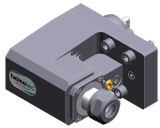
Radial drilling and milling head ER 11



Notation: 180° reversible
 Employment for: Turret
 Tool drive: Flat (~DIN 1809)
 Shank size [mm]: 36.00
 Shank type: BMT
 Tool adaption: ER 11
 Gear ratio [i]: 1:4
 Torque max [Nm]: 2,5
 Rotation max [1/min]: 48000
 Rotating direction: same
 Coolant: EXT
 Center distance [mm]: 80

3 030 34 000

Radial drilling and milling head ER 20



Citizen Part-#: KSE113
 Weight [kg]: 4.410
 Notation: 180° reversible
 Employment for: Turret
 Tool drive: Flat (~DIN 1809)
 Shank size [mm]: 36.00
 Shank type: BMT
 Tool adaption: ER 20
 Gear ratio [i]: 1:1
 Torque max [Nm]: 16
 Rotation max [1/min]: 6000
 Rotating direction: same
 Coolant: EXT
 Center distance [mm]: 80

3 030 34 001

Radial drilling and milling head ER 20




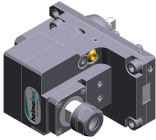
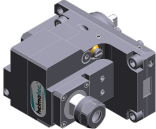
Citizen Part-#: KSE213
 Weight [kg]: 3.940
 Notation: 180° reversible
 Employment for: Turret
 Tool drive: Flat (~DIN 1809)
 Shank size [mm]: 36.00
 Shank type: BMT
 Tool adaption: ER 20
 Gear ratio [i]: 1:1
 Torque max [Nm]: 16
 Rotation max [1/min]: 6000
 Rotating direction: same
 Coolant: EXT
 Center distance [mm]: 80

3 030 34 002

Radial drilling and milling head ER 20 IC



Citizen Part-#: KSE113 - IK
 Weight [kg]: 4.290
 Notation: 180° reversible
 Employment for: Turret
 Tool drive: Flat (~DIN 1809)
 Shank size [mm]: 36.00
 Shank type: BMT
 Tool adaption: ER 20
 Gear ratio [i]: 1:1

Part-#	Name	
	Torque max [Nm]:	16
	Rotation max [1/min]:	6000
	Rotating direction:	same
	Coolant:	IC/Ext
	Pressure max [bar]:	140
	Center distance [mm]:	80
3 030 34 003	Radial drilling and milling head ER 20 IC	
	Citizen Part-#:	KSE213 - IK
	Weight [kg]:	3.910
	Notation:	180° reversible
	Employment for:	Turret
	Tool drive:	Flat (~DIN 1809)
	Shank size [mm]:	36.00
	Shank type:	BMT
	Tool adaption:	ER 20
	Gear ratio [i]:	1:1
	Torque max [Nm]:	16
	Rotation max [1/min]:	6000
	Rotating direction:	same
	Coolant:	IC/Ext
	Pressure max [bar]:	140
	Center distance [mm]:	80
3 030 34 004	Radial drilling and milling head ER 16	
	Citizen Part-#:	KSE1410
	Notation:	180° reversible
	Employment for:	Turret
	Version:	offset
	Tool drive:	Flat (~DIN 1809)
	Shank size [mm]:	36.00
	Shank type:	BMT
	Tool adaption:	ER 16
	Gear ratio [i]:	1:2
	Torque max [Nm]:	8
	Rotation max [1/min]:	12000
	Rotating direction:	same
	Coolant:	EXT
	Center distance [mm]:	80
	Offset [mm]:	26 (48,0)
3 030 34 005	Radial drilling and milling head ER 16 IC	
	Citizen Part-#:	~KSE1410-IK
	Weight [kg]:	4.560
	Notation:	180° reversible
	Employment for:	Turret
	Version:	offset
	Tool drive:	Flat (~DIN 1809)
	Shank size [mm]:	36.00
	Shank type:	BMT
	Tool adaption:	ER 16
	Gear ratio [i]:	1:2
	Torque max [Nm]:	8
	Rotation max [1/min]:	12000
	Rotating direction:	same
	Coolant:	IC/Ext
	Pressure max [bar]:	140

Part-#	Name
--------	------

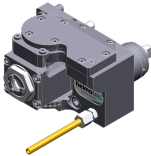
Center distance [mm]: 80
Offset [mm]: 26 (48)

3 037 32 002



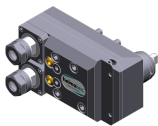
Radial disk mill head arbor 10
Citizen Part-#: ~KSH432
Weight [kg]: 4.080
Notation: 180° reversible
Employment for: Turret
Version: ± 22° turnable
Tool drive: Flat (~DIN 1809)
Shank size [mm]: 36.00
Shank type: BMT
Tool adaption: Arbor 10
Gear ratio [i]: 1:1
Torque max [Nm]: 16
Rotation max [1/min]: 6000
Rotating direction: opposite
Coolant: no
Please note: max. milling cutter ø32 mm
Center distance [mm]: 77
Offset [mm]: 49 (25)

3 043 34 000



Universal head +90°/-30° adj. ER16AX UT
Notation: offset; 180° reversible
Employment for: Turret
Tool drive: Flat (~DIN 1809)
Shank size [mm]: 36.00
Shank type: BMT
Tool adaption: ER 16 A - u-tec
Gear ratio [i]: 1:1
Torque max [Nm]: 16
Rotation max [1/min]: 12000
Rotating direction: opposite
Coolant: EXT
Center distance [mm]: 41
Offset [mm]: 49 (0)

3 050 34 001



Multispindle drilling head ER 16
Citizen Part-#: KSC1210
Weight [kg]: 5.140
Notation: 180° reversible
Employment for: Turret
Version: 2-spindles
Tool drive: Flat (~DIN 1809)
Shank size [mm]: 36.00
Shank type: BMT
Tool adaption: ER 16
Gear ratio [i]: 1:2
Torque max [Nm]: 8/Sp.
Rotation max [1/min]: 12000
Rotating direction: same
Coolant: EXT
Offset [mm]: 98 (49)

Part-#	Name
--------	------

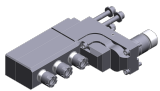
3 050 34 002



Multispindle drilling head ER 20

Citizen Part-#: KSC313
 Weight [kg]: 4.770
 Notation: 180° reversible
 Employment for: Turret
 Version: 2-spindles
 Tool drive: Flat (~DIN 1809)
 Shank size [mm]: 36.00
 Shank type: BMT
 Tool adaption: ER 20
 Gear ratio [i]: 1:1
 Torque max [Nm]: 16/Sp.
 Rotation max [1/min]: 6000
 Rotating direction: same
 Coolant: EXT
 Offset [mm]: 98 (49)

3 053 34 000



Multispindle radial head ER 16 M


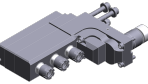

Citizen Part-#: GSE1610
 Weight [kg]: 4.720
 Notation: 90° adjustable
 Version: 3-spindles
 Tool drive: Gear
 Shank size [mm]: 31.00
 Shank type: BMT
 Tool adaption: ER 16 M
 ER 16 M
 ER 16 M
 Gear ratio [i]: 1:1
 Torque max [Nm]: 12
 Rotation max [1/min]: 8000
 Rotating direction: same/opposite
 Coolant: no
 Please note: stronger bearing
 Center distance [mm]: 78/114/150

3 053 34 003



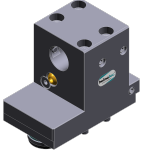
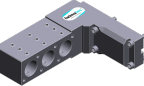



Multispindle radial head ER 20

Citizen Part-#: KSE313
 Weight [kg]: 5.830
 Notation: 180° reversible
 Employment for: Turret
 Version: 2-spindles; offset
 Tool drive: Flat (~DIN 1809)
 Shank size [mm]: 36.00
 Shank type: BMT
 Tool adaption: ER 20
 ER 20
 Gear ratio [i]: 1:1
 Torque max [Nm]: 16
 Rotation max [1/min]: 6000
 Rotating direction: same
 Coolant: EXT
 Center distance [mm]: 80
 Offset [mm]: 42,5 (31,5)
 Y±26,5

Part-#	Name	
3 053 34 004	Multispindle radial head ER 16	
		<p>Citizen Part-#: KSE1510 Weight [kg]: 5.250 Notation: 180° reversible Employment for: Turret Version: 2-spindles; offset Tool drive: Flat (~DIN 1809) Shank size [mm]: 36.00 Shank type: BMT Tool adaption: ER 16 ER 16 Gear ratio [i]: 1:2 Torque max [Nm]: 8 Rotation max [1/min]: 12000 Rotating direction: same Coolant: EXT Center distance [mm]: 80 Offset [mm]: 26 (48,0) Y±26,5</p>
3 053 34 005	Multispindle radial head ER 16 M IC	
		<p>Weight [kg]: 5.420 Notation: 90° adjustable Version: 3-spindles Tool drive: Gear Shank size [mm]: 31.00 Shank type: BMT Tool adaption: ER 16 M ER 16 M ER 16 M Gear ratio [i]: 1:1 Torque max [Nm]: 12 Rotation max [1/min]: 8000 Rotating direction: same/opposite Coolant: IC Pressure max [bar]: 140 Please note: stronger bearing; check applicability! Center distance [mm]: 78/114/150</p>
3 068 34 001	Radial whirling unit HW 46	
		<p>Tool drive: Gear Shank size [mm]: 31.00 Shank type: BMT Tool adaption: HW 46 Gear ratio [i]: 1:1 Torque max [Nm]: 16 Rotation max [1/min]: 8000 Rotating direction: same Coolant: no Please note: Check applicability; without cutting inserts carrier Center distance [mm]: 89,5</p>

Part-#	Name	
3 068 34 002	Radial whirling unit HW 46	
	Employment for:	Turret
	Tool drive:	Flat (~DIN 1809)
	Shank size [mm]:	36.00
	Shank type:	BMT
	Tool adaption:	HW 46
	Gear ratio [i]:	1:1
	Torque max [Nm]:	16
	Rotation max [1/min]:	8000
	Rotating direction:	same
	Coolant:	EXT
	Please note:	Check applicability; without cutting inserts carrier
	Center distance [mm]:	70
3 214 31 002	Turning holder sq. 16	
	Citizen Part-#:	CTF1216
	Weight [kg]:	3.235
	Notation:	180° reversible
	Employment for:	Turret
	Shank size [mm]:	36.00
	Shank type:	BMT
	Tool adaption:	Sq. 16 (5/8")
	Coolant:	EXT
	Offset [mm]:	74 (0)
3 214 31 007	Turning holder sq. 16	
	Citizen Part-#:	CTF1316
	Notation:	180° reversible
	Employment for:	Turret
	Version:	Upside down
	Shank size [mm]:	36.00
	Shank type:	BMT
	Tool adaption:	Sq. 16 (5/8")
	Coolant:	EXT
	Offset [mm]:	74 (0)
3 219 33 000	Adapter for sensor Blum TC 55	
	Employment for:	Turret
	Shank size [mm]:	36.00
	Shank type:	BMT
	Tool adaption:	Blum-sensor TC 55
	Coolant:	no
3 240 37 000	Boring bar holder Ø 1"	
	Notation:	offset
	Shank size [mm]:	36.00
	Shank type:	BMT
	Tool adaption:	Ø 1" (25,4mm)
	Coolant:	IC/Ext
	Center distance [mm]:	70

Part-#	Name	
3 240 37 001	Boring bar holder Ø 1"	
	Citizen Part-#:	CDF1201
	Weight [kg]:	4.020
	Notation:	offset
	Employment for:	Turret
	Shank size [mm]:	36.00
	Shank type:	BMT
	Tool adaption:	Ø 1" (25,4mm)
	Coolant:	IC/Ext
	Center distance [mm]:	70,0
3 240 37 002	Boring bar holder Ø 1"	
	Citizen Part-#:	CDF1401
	Weight [kg]:	3.860
	Notation:	offset
	Employment for:	Turret
	Shank size [mm]:	36.00
	Shank type:	BMT
	Tool adaption:	Ø 1" (25,4mm)
	Coolant:	IC
	Center distance [mm]:	70,0
3 249 37 000	Double boring bar holder ø 1"	
	Citizen Part-#:	CDF1301
	Weight [kg]:	3.690
	Notation:	offset
	Employment for:	Turret
	Shank size [mm]:	36.00
	Shank type:	BMT
	Tool adaption:	Ø 1" (25,4mm)
	Coolant:	EXT
	Center distance [mm]:	70,0
3 253 37 006	Multiple boring bar holder Ø 1"	
	Citizen Part-#:	GDF1701
	Weight [kg]:	3.600
	Notation:	offset
	Shank size [mm]:	31.00
	Shank type:	BMT
	Tool adaption:	Ø 1" (25,4mm)
		Ø 1" (25,4mm)
		Ø 1" (25,4mm)
	Coolant:	no
	Center distance [mm]:	78/114/150
3 253 37 007	Multiple boring bar holder ø 1"	
	Citizen Part-#:	CDF1101
	Weight [kg]:	5.630
	Notation:	offset
	Employment for:	Turret
	Shank size [mm]:	36.00
	Shank type:	BMT
	Tool adaption:	Ø 1" (25,4mm)
		Ø 1" (25,4mm)
		Ø 1" (25,4mm)
	Coolant:	IC/Ext

Citizen
Cincom M(5)32

Part-#	Name
--------	------

Center distance [mm]: 70,0/91,0
Offset [mm]: Y+32,0 ; Y-32,0

3 259 31 000

Multiple turning holder 2x sq. 16



Citizen Part-#: CTF1116
Weight [kg]: 4.160
Notation: 180° reversible
Employment for: Turret
Version: Y-axes offset
Shank size [mm]: 36.00
Shank type: BMT
Tool adaption: Sq. 16
Sq. 16
Coolant: EXT
Offset [mm]: 74 (0)
Y+21,0 ; Y-21,0



heimatec.u-tec®

heimatec.com

Products / Tool change systems /
u-tec® Tool-changing system



versions see catalog



heimatec.easy-quick

heimatec.com

Products / Tool change systems /
easy-quick HT quick-changing system



versions see catalog



heimatec.Capto™

heimatec.com

Products / Tool change systems /
heimatec.Capto™ quick-changing system



versions see catalog



heimatec.accessories

heimatec.com

Products / Accessories



versions see catalog





● heimatec overseas branches

○ global representations of heimatec

heimatec[®]

heimatec GmbH
Präzisionswerkzeuge
Carl-Benz-Str. 4
77871 Renchen
Germany

T +49 7843 9466 0
www.heimatec.com
info@heimatec.com

Please find the contact details of our worldwide trading partners on our website:
<https://heimatec.com/business-partners>