

**TOPSELLER -**  
many more available!

Live Tools

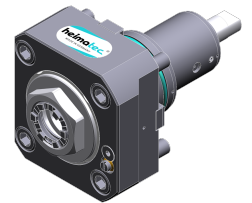
**heimatec**®

# Hyundai-Kia

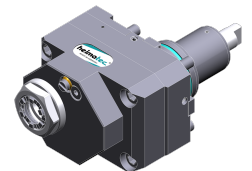
## SKT 180 TT MS/SY

Part-#	Tool adaption	Rotation max [1/min]	Gear ratio	Coolant	Pressure max.	Center distance
<b>Axial drilling and milling head</b>						
8 010 55 038	<b>ER 25 A - u-tec</b>	6.000	1:1	IC/Ext	25 bar	--
8 010 55 039	<b>ER 25 A - u-tec</b>	12.000	1:1	EXT	140 bar	--
<b>Axial drilling and milling head, offset</b>						
8 019 55 054	<b>ER 25 A - u-tec</b>	6.000	1:1	IC/Ext	140 bar	--
<b>Radial drilling and milling head</b>						
8 030 55 256	<b>ER 25 A - u-tec</b>	12.000	1:1	IC/Ext	140 bar	<b>85 mm</b>
8 030 56 173	<b>ER 32 A - u-tec</b>	6.000	2:1	EXT	--	<b>85 mm</b>
8 030 56 246	<b>ER 32 A - u-tec</b>	12.000	1:1	IC/Ext	140 bar	<b>85 mm</b>
8 030 56 247	<b>ER 32 A - u-tec</b>	12.000	1:1	EXT	--	<b>85 mm</b>
<b>Radial drilling and milling head, double spindle</b>						
8 039 55 026	<b>ER 25 A - u-tec</b>	12.000	1:1	EXT	--	<b>85 mm</b>
8 039 56 029	<b>ER 32 A - u-tec</b>	12.000	1:1	EXT	--	<b>85 mm</b>
<b>Universal head, offset</b>						
8 043 55 005	<b>ER 25 A - u-tec</b>	6.000	1:1	EXT	--	<b>50 mm</b>

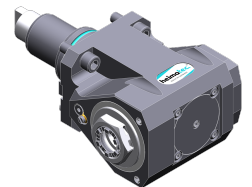
Illustrations similar.



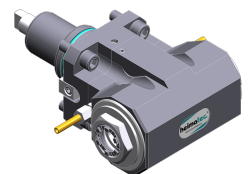
8 010 55 038



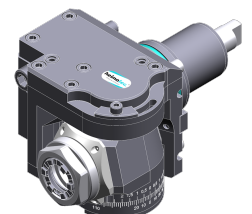
8 019 55 054



8 030 55 256



8 039 55 026



8 043 55 005

TOPSELLER -  
many more available!

Static Tools

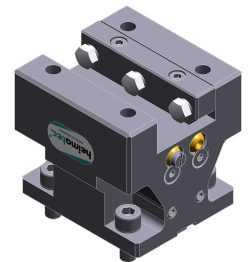
heimatec®

# Hyundai-Kia

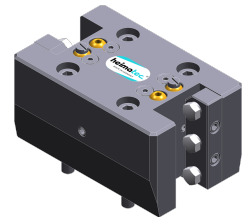
## SKT 180 TT MS/SY

Part-#	Tool adaption	Coolant	Pressure max.
<b>Combi facing holder</b> 8 244 05 003	<b>Sq. 25</b>	EXT	80 bar
<b>Double turning holder</b> 8 251 05 001	<b>Sq. 25</b>	EXT	80 bar
<b>Multiple turning holder</b> 8 259 04 007	<b>Sq. 20</b>	IC/Ext	--
<b>Cut-off holder, height adjustable</b> 8 320 03 025	<b>Clampshaft SH 32</b>	IC/Ext	70 bar

Illustrations similar.



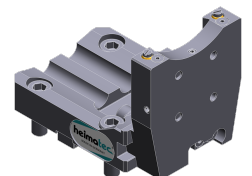
8 244 05 003



8 251 05 001



8 259 04 007



8 320 03 025