

TOPSELLER -
many more available!

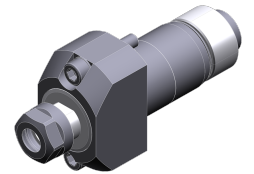
Live Tools

heimatec®

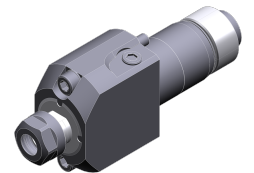
Citizen Cincom M16

Part-#	Tool adaption	Rotation max [1/min]	Gear ratio	Coolant	Pressure max.
Axial drilling and milling head					
3 010 23 000 <i>MSC507</i>	ER 11	10.000	1:1	no	--
3 010 23 006	ER 11	10.000	1:1	IC	100 bar
3 013 23 000	ER 11	48.000	1:4	no	--

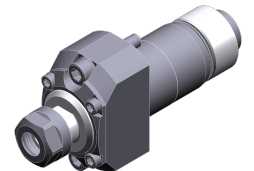
Illustrations similar.



3 010 23 000



3 010 23 006



3 013 23 000

TOPSELLER -
many more available!

Static Tools

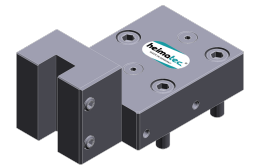
heimatec®

Citizen

Cincom M16

Part-#	Tool adaption	Coolant	Center distance
Turning holder			
3 224 00 000 <i>VTF110</i>	Sq. 10	no	--
Boring bar holder			
3 240 05 000 <i>VDF101</i>	Ø 3/4" (19,05mm)	no	45 mm
Multiple boring bar holder			
3 253 05 004 <i>VDFZ401L</i>	Ø 3/4"	EXT	--
3 253 05 000 <i>VDF401</i>	Ø 3/4" (19,05mm)	no	--
3 253 25 000 <i>MDF107</i>	Ø 3/4" (19,05mm)	no	--
3 253 25 001 <i>GDF1302</i>	Ø 3/4" (19,05mm)	no	--
3 253 25 002 <i>GDF1303</i>	Ø 3/4" (19,05mm)	no	--
Collet chuck			
3 776 13 000 <i>BDS507</i>	ER 11	no	--
3 776 13 001 <i>BDS607</i>	ER 11	no	--
3 776 13 002 <i>BDS707</i>	ER 11	no	--
3 776 13 003 <i>VDS506</i>	ER 11	no	--
3 776 14 000 <i>BDS508</i>	ER 16	no	--
3 776 14 001 <i>BDS610</i>	ER 16	no	--
3 776 14 003 <i>VDS110</i>	ER 16	no	--

Illustrations similar.



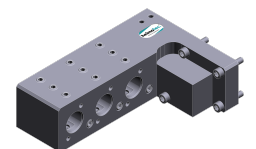
3 224 00 000



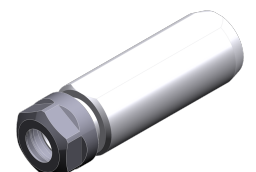
3 240 05 000



3 253 05 000



3 253 25 000



3 776 13 000

TOPSELLER -
many more available!

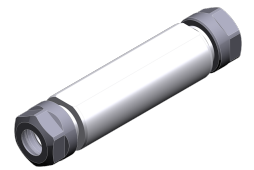
Static Tools

heimatec®

Citizen Cincom M16

Part-#	Tool adaption	Coolant	Center distance
Doppel-collet chuck 3 776 13 005 <i>HDS5506</i>	ER 11	no	--
Tapping chuck 3 778 13 000 <i>BNS407</i>	ER 11	no	--

Illustrations similar.



3 776 13 005



3 778 13 000