

Hyundai-Kia
SKT 180 TT
MS/SY



High-tech from heimatec - heimatec - Tools and systems for productive turning and milling

heimatec belongs to the international technology and quality leaders for precision tools and specializes in the development and production of high-precision static and live tools for all CNC lathes, CNC turn-/mill machines and CNC machining centers.

The range of products* spans from static BMT and VDI tool holders, live tools up to highly complex customer-specific individual solutions. heimatec, headquartered in Renchen, has a own subsidiary in Asia and India and numerous representatives as well as trading partners all over the world.

*OUR PRODCUTS

Static tool holders

Live tool units

Precision tools

Tools for turning and machining centres

Tools for swiss type lathes

Tool changing and uick-change systems

Tool systems for gear production

Digital tool management

This catalogue, including all its parts, is protected by copyright. Any use outside the restricted limitations of the Copyright Act without the consent of heimatec is inadmissible and liable to prosecution. This applies in particular to duplication, translation, microfilming and storage and processing in electronic systems.

heimatec GmbH reserves the right to make technical changes at any time without giving prior notice. This applies in particular to adjustments at any time to meet new or changed international standards, or in case of further developments of our products or manufacturing processes.

The current version of our General Terms and Conditions can be found on our website.

| Part-# | Name | |
|--|---|------------------------------------|
| 8 010 55 038 | Axial drilling and milling head ER 25 AX UT IC | |
|  | Weight [kg]: | 3.050 |
| | Tool drive: | Flat (~DIN 1809) |
| | Shank size [mm]: | 55.00 |
| | Shank type: | BMT |
| | Tool adaption: | ER 25 A - u-tec |
| | Gear ratio [i]: | 1:1 |
| | Torque max [Nm]: | 50 |
| | Rotation max [1/min]: | 6000 |
| | Rotating direction: | same |
| | Coolant: | IC/Ext |
| | Pressure max [bar]: | 25 |
| | Please note: | Combi bearing |
| 8 010 55 039 | Axial drilling and milling head ER 25 AX UT | |
|  | Notation: | 180° reversible |
| | Tool drive: | Flat (~DIN 1809) |
| | Shank size [mm]: | 55.00 |
| | Shank type: | BMT |
| | Tool adaption: | ER 25 A - u-tec |
| | Gear ratio [i]: | 1:1 |
| | Torque max [Nm]: | 50 |
| | Rotation max [1/min]: | 12000 |
| | Rotating direction: | same |
| | Coolant: | EXT |
| | Pressure max [bar]: | 140 |
| 8 010 55 051 | Axial drilling and milling head Weldon 3/4" | |
|  | Weight [kg]: | 3.390 |
| | Tool drive: | Flat (~DIN 1809) |
| | Shank size [mm]: | 55.00 |
| | Shank type: | BMT |
| | Tool adaption: | Weldon (DIN 1835 b) 3/4" (19,05mm) |
| | Gear ratio [i]: | 1:1 |
| | Torque max [Nm]: | 50 |
| | Rotation max [1/min]: | 6000 |
| | Rotating direction: | same |
| | Coolant: | EXT |
| | Please note: | Combi bearing |
| 8 010 55 120 | Axial drilling and milling head ER 25 AX UT | |
|  | Weight [kg]: | 3.190 |
| | Tool drive: | Flat (~DIN 1809) |
| | Shank size [mm]: | 55.00 |
| | Shank type: | BMT |
| | Tool adaption: | ER 25 A - u-tec |
| | Gear ratio [i]: | 1:1 |
| | Torque max [Nm]: | 50 |
| | Rotation max [1/min]: | 8000 |
| | Rotating direction: | same |
| | Coolant: | EXT |

| Part-# | Name | |
|---|---|------------------|
| 8 010 56 035 | Axial drilling and milling head HT 4 IC | |
|  | Tool drive: | Flat (~DIN 1809) |
| | Shank size [mm]: | 55.00 |
| | Shank type: | BMT |
| | Tool adaption: | HT 4 |
| | Gear ratio [i]: | 1:1 |
| | Torque max [Nm]: | 50 |
| | Rotation max [1/min]: | 6000 |
| | Rotating direction: | same |
| | Coolant: | IC/Ext |
| | Pressure max [bar]: | 25 |
| | Please note: | stronger bearing |
| 8 010 56 039 | Axial drilling and milling head ER 32 AX UT | |
|  | Weight [kg]: | 3.200 |
| | Tool drive: | Flat (~DIN 1809) |
| | Shank size [mm]: | 55.00 |
| | Shank type: | BMT |
| | Tool adaption: | ER 32 A - u-tec |
| | Gear ratio [i]: | 1:1 |
| | Torque max [Nm]: | 50 |
| | Rotation max [1/min]: | 6000 |
| | Rotating direction: | same |
| | Coolant: | EXT |
| | Please note: | Combi bearing |
| 8 010 56 040 | Axial drilling and milling head ER 32 AX UT IC | |
|  | Weight [kg]: | 3.220 |
| | Tool drive: | Flat (~DIN 1809) |
| | Shank size [mm]: | 55.00 |
| | Shank type: | BMT |
| | Tool adaption: | ER 32 A - u-tec |
| | Gear ratio [i]: | 1:1 |
| | Torque max [Nm]: | 50 |
| | Rotation max [1/min]: | 6000 |
| | Rotating direction: | same |
| | Coolant: | IC/Ext |
| | Pressure max [bar]: | 25 |
| | Please note: | Combi bearing |
| 8 010 56 047 | Axial drilling and milling head HT 4 IC | |
|  | Tool drive: | Flat (~DIN 1809) |
| | Shank size [mm]: | 55.00 |
| | Shank type: | BMT |
| | Tool adaption: | HT 4 |
| | Gear ratio [i]: | 1:1 |
| | Torque max [Nm]: | 50 |
| | Rotation max [1/min]: | 6000 |
| | Rotating direction: | same |
| | Coolant: | IC/Ext |
| | Pressure max [bar]: | 25 |
| | Please note: | Combi bearing |

| Part-# | Name | |
|---|---|---|
| 8 010 56 089 | Axial drilling and milling head ER 32 AX UT IC | |
|  | Weight [kg]: | 3.700 |
| | Tool drive: | Flat (~DIN 1809) |
| | Shank size [mm]: | 55.00 |
| | Shank type: | BMT |
| | Tool adaption: | ER 32 A - u-tec |
| | Gear ratio [i]: | 1:1 |
| | Torque max [Nm]: | 50 |
| | Rotation max [1/min]: | 12000 |
| | Rotating direction: | same |
| | Coolant: | IC/Ext |
| | Pressure max [bar]: | 100 |
| | Please note: | Dryrun possible |
| 8 010 56 119 | Axial drilling and milling head C 4 IC | |
|  | Notation: | 180° reversible |
| | Tool drive: | Flat (~DIN 1809) |
| | Shank size [mm]: | 55.00 |
| | Shank type: | BMT |
| | Tool adaption: | heimatec Capto(TM) C 4 |
| | Gear ratio [i]: | 1:1 |
| | Torque max [Nm]: | 50 |
| | Rotation max [1/min]: | 6000 |
| | Rotating direction: | same |
| | Coolant: | IC/Ext |
| | Pressure max [bar]: | 100 |
| | Please note: | Check applicability; tool length check !; |
| 8 013 54 008 | Axial drilling and milling head ER 16 AX UT | |
|  | Weight [kg]: | 2.480 |
| | Tool drive: | Flat (~DIN 1809) |
| | Shank size [mm]: | 55.00 |
| | Shank type: | BMT |
| | Tool adaption: | ER 16 A - u-tec |
| | Gear ratio [i]: | 1:4 |
| | Torque max [Nm]: | 5 |
| | Rotation max [1/min]: | 24000 |
| | Rotating direction: | same |
| | Coolant: | EXT |
| 8 013 54 009 | Axial drilling and milling head ER 16 AX UT IC | |
|  | Tool drive: | Flat (~DIN 1809) |
| | Shank size [mm]: | 55.00 |
| | Shank type: | BMT |
| | Tool adaption: | ER 16 A - u-tec |
| | Gear ratio [i]: | 1:4 |
| | Torque max [Nm]: | 5 |
| | Rotation max [1/min]: | 24000 |
| | Rotating direction: | same |
| | Coolant: | IC/Ext |
| | Pressure max [bar]: | 100 |

| Part-# | Name |
|--------|------|
|--------|------|

8 019 55 050

Axial drilling and milling head ER 25 AX UT



Weight [kg]: 5.000
 Notation: offset; 180° reversible
 Tool drive: Flat (~DIN 1809)
 Shank size [mm]: 55.00
 Shank type: BMT
 Tool adaption: ER 25 A - u-tec
 Gear ratio [i]: 1:1
 Torque max [Nm]: 40
 Rotation max [1/min]: 8000
 Rotating direction: opposite
 Coolant: EXT
 Please note: stronger bearing
 Offset [mm]: 42

8 019 55 051

Axial drilling and milling head ER 25 AX UT



Weight [kg]: 5.010
 Notation: offset; 180° reversible
 Tool drive: Flat (~DIN 1809)
 Shank size [mm]: 55.00
 Shank type: BMT
 Tool adaption: ER 25 A - u-tec
 Gear ratio [i]: 2:1
 Torque max [Nm]: 50
 Rotation max [1/min]: 3000
 Rotating direction: opposite
 Coolant: EXT
 Please note: stronger bearing
 Offset [mm]: 42

8 019 55 052

Axial drilling and milling head ER 25 AX UT




Weight [kg]: 5.020
 Notation: offset; 180° reversible
 Tool drive: Flat (~DIN 1809)
 Shank size [mm]: 55.00
 Shank type: BMT
 Tool adaption: ER 25 A - u-tec
 Gear ratio [i]: 1:3
 Torque max [Nm]: 16
 Rotation max [1/min]: 18000
 Rotating direction: opposite
 Coolant: EXT
 Please note: stronger bearing
 Offset [mm]: 42

8 019 55 053

Axial drilling and milling head ER 25 AX UT

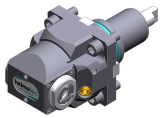


Weight [kg]: 4.980
 Notation: offset; 180° reversible
 Tool drive: Flat (~DIN 1809)
 Shank size [mm]: 55.00
 Shank type: BMT
 Tool adaption: ER 25 A - u-tec
 Gear ratio [i]: 1:2
 Torque max [Nm]: 25
 Rotation max [1/min]: 16000
 Rotating direction: opposite

| Part-# | Name | |
|---|---|-------------------------|
| | Coolant: | EXT |
| | Please note: | stronger bearing |
| | Offset [mm]: | 42 |
| 8 019 55 054 | Axial drilling and milling head ER 25 AX UT IC | |
|  | Notation: | offset; 180° reversible |
| | Tool drive: | Flat (~DIN 1809) |
| | Shank size [mm]: | 55.00 |
| | Shank type: | BMT |
| | Tool adaption: | ER 25 A - u-tec |
| | Gear ratio [i]: | 1:1 |
| | Torque max [Nm]: | 40 |
| | Rotation max [1/min]: | 6000 |
| | Rotating direction: | opposite |
| | Coolant: | IC/Ext |
| | Pressure max [bar]: | 140 |
| | Please note: | stronger bearing |
| | Offset [mm]: | 42 |
| 8 019 55 056 | Axial drilling and milling head ER 25 AX UT IC | |
|  | Weight [kg]: | 6.130 |
| | Notation: | offset; 180° reversible |
| | Tool drive: | Flat (~DIN 1809) |
| | Shank size [mm]: | 55.00 |
| | Shank type: | BMT |
| | Tool adaption: | ER 25 A - u-tec |
| | Gear ratio [i]: | 1:3 |
| | Torque max [Nm]: | 16 |
| | Rotation max [1/min]: | 18000 |
| | Rotating direction: | opposite |
| | Coolant: | IC/Ext |
| | Pressure max [bar]: | 140 |
| | Please note: | stronger bearing |
| | Offset [mm]: | 42 |
| 8 019 55 057 | Axial drilling and milling head ER 25 AX UT IC | |
|  | Weight [kg]: | 6.060 |
| | Notation: | offset; 180° reversible |
| | Tool drive: | Flat (~DIN 1809) |
| | Shank size [mm]: | 55.00 |
| | Shank type: | BMT |
| | Tool adaption: | ER 25 A - u-tec |
| | Gear ratio [i]: | 1:2 |
| | Torque max [Nm]: | 25 |
| | Rotation max [1/min]: | 16000 |
| | Rotating direction: | opposite |
| | Coolant: | IC/Ext |
| | Pressure max [bar]: | 140 |
| | Please note: | stronger bearing |
| | Offset [mm]: | 42 |

| Part-# | Name |
|--------|------|
|--------|------|

8 030 54 079



Radial drilling and milling head ER 16 AX UT

| | |
|-----------------------|------------------|
| Weight [kg]: | 4.200 |
| Notation: | 180° reversible |
| Tool drive: | Flat (~DIN 1809) |
| Shank size [mm]: | 55.00 |
| Shank type: | BMT |
| Tool adaption: | ER 16 A - u-tec |
| Gear ratio [i]: | 1:1 |
| Torque max [Nm]: | 10 |
| Rotation max [1/min]: | 6000 |
| Rotating direction: | opposite |
| Coolant: | EXT |
| Center distance [mm]: | 70 |

8 030 55 093



Angle-mill- and drill holder ER 25 AX UT

| | |
|-----------------------|------------------|
| Notation: | 180° reversible |
| Tool drive: | Flat (~DIN 1809) |
| Shank size [mm]: | 55.00 |
| Shank type: | BMT |
| Tool adaption: | ER 25 A - u-tec |
| Gear ratio [i]: | 1:1 |
| Torque max [Nm]: | 50 |
| Rotation max [1/min]: | 5000 |
| Rotating direction: | same |
| Coolant: | EXT |
| Please note: | Combi bearing |
| Center distance [mm]: | 85 |

8 030 55 143



Radial drilling and milling head ER 25 AX UT

| | |
|-----------------------|------------------|
| Notation: | 180° reversible |
| Tool drive: | Flat (~DIN 1809) |
| Shank size [mm]: | 55.00 |
| Shank type: | BMT |
| Tool adaption: | ER 25 A - u-tec |
| Gear ratio [i]: | 1:3 |
| Torque max [Nm]: | 12 |
| Rotation max [1/min]: | 18000 |
| Rotating direction: | same |
| Coolant: | EXT |
| Please note: | stronger bearing |
| Center distance [mm]: | 85 |

8 030 55 156



Radial drilling and milling head ER 25 AX UT IC

| | |
|-----------------------|------------------|
| Weight [kg]: | 6.820 |
| Notation: | 180° reversible |
| Version: | Special |
| Tool drive: | Flat (~DIN 1809) |
| Shank size [mm]: | 55.00 |
| Shank type: | BMT |
| Tool adaption: | ER 25 A - u-tec |
| Gear ratio [i]: | 1:2 |
| Torque max [Nm]: | 16 |
| Rotation max [1/min]: | 12000 |
| Rotating direction: | same |
| Coolant: | IC |
| Pressure max [bar]: | 140 |

| Part-# | Name |
|--------|------|
|--------|------|

Please note: stronger bearing
Center distance [mm]: 85

8 030 55 184



Radial drilling and milling head ER 25 AX UT IC
Weight [kg]: 6.830
Notation: 180° reversible
Tool drive: Flat (~DIN 1809)
Shank size [mm]: 55.00
Shank type: BMT
Tool adaption: ER 25 A - u-tec
Gear ratio [i]: 1:3
Torque max [Nm]: 12
Rotation max [1/min]: 18000
Rotating direction: same
Coolant: IC/Ext
Pressure max [bar]: 140
Please note: stronger bearing
Center distance [mm]: 85

8 030 55 255



Radial drilling and milling head ER 25 AX UT
Weight [kg]: 7.600
Notation: 180° reversible
Tool drive: Flat (~DIN 1809)
Shank size [mm]: 55.00
Shank type: BMT
Tool adaption: ER 25 A - u-tec
Gear ratio [i]: 1:1
Torque max [Nm]: 50
Rotation max [1/min]: 12000
Rotating direction: same
Coolant: EXT
Center distance [mm]: 85

8 030 55 256





Radial drilling and milling head ER 25 AX UT IC
Weight [kg]: 8.200
Notation: 180° reversible
Tool drive: Flat (~DIN 1809)
Shank size [mm]: 55.00
Shank type: BMT
Tool adaption: ER 25 A - u-tec
Gear ratio [i]: 1:1
Torque max [Nm]: 50
Rotation max [1/min]: 12000
Rotating direction: same
Coolant: IC/Ext
Pressure max [bar]: 140
Center distance [mm]: 85




8 030 56 173



Radial drilling and milling head ER 32 AX UT
Notation: 180° reversible
Tool drive: Flat (~DIN 1809)
Shank size [mm]: 55.00
Shank type: BMT
Tool adaption: ER 32 A - u-tec
Gear ratio [i]: 2:1
Torque max [Nm]: 63

| Part-# | Name | |
|---|--|--|
| | Rotation max [1/min]: | 6000 |
| | Rotating direction: | opposite |
| | Coolant: | EXT |
| | Please note: | Combi bearing |
| | Center distance [mm]: | 85 |
| 8 030 56 186 | Radial drilling and milling head C 4 | |
|  | Weight [kg]: | 10.200 |
| | Notation: | 180° reversible |
| | Tool drive: | Flat (~DIN 1809) |
| | Shank size [mm]: | 55.00 |
| | Shank type: | BMT |
| | Tool adaption: | heimatec Capto(TM) C 4 |
| | Gear ratio [i]: | 1:1 |
| | Torque max [Nm]: | 40 |
| | Rotation max [1/min]: | 6000 |
| | Rotating direction: | opposite |
| | Coolant: | EXT |
| | Please note: | Check applicability; note tool length! |
| | Center distance [mm]: | 85 |
| 8 030 56 187 | Radial drilling and milling head C 4 IC | |
|  | Weight [kg]: | 10.440 |
| | Notation: | 180° reversible |
| | Tool drive: | Flat (~DIN 1809) |
| | Shank size [mm]: | 55.00 |
| | Shank type: | BMT |
| | Tool adaption: | heimatec Capto(TM) C 4 |
| | Gear ratio [i]: | 1:1 |
| | Torque max [Nm]: | 40 |
| | Rotation max [1/min]: | 6000 |
| | Rotating direction: | opposite |
| | Coolant: | IC/Ext |
| | Pressure max [bar]: | 140 |
| | Please note: | Check applicability; note tool length! |
| | Center distance [mm]: | 85 |
| 8 030 56 246 | Radial drilling and milling head ER 32 AX UT IC | |
|  | Weight [kg]: | 7.660 |
| | Notation: | 180° reversible |
| | Tool drive: | Flat (~DIN 1809) |
| | Shank size [mm]: | 55.00 |
| | Shank type: | BMT |
| | Tool adaption: | ER 32 A - u-tec |
| | Gear ratio [i]: | 1:1 |
| | Torque max [Nm]: | 50 |
| | Rotation max [1/min]: | 12000 |
| | Rotating direction: | same |
| | Coolant: | IC/Ext |
| | Pressure max [bar]: | 140 |
| | Center distance [mm]: | 85 |

| Part-# | Name | |
|---|---|--|
| 8 030 56 247 | Radial drilling and milling head ER 32 AX UT | |
|  | Weight [kg]: | 7.550 |
| | Notation: | 180° reversible |
| | Tool drive: | Flat (~DIN 1809) |
| | Shank size [mm]: | 55.00 |
| | Shank type: | BMT |
| | Tool adaption: | ER 32 A - u-tec |
| | Gear ratio [i]: | 1:1 |
| | Torque max [Nm]: | 50 |
| | Rotation max [1/min]: | 12000 |
| | Rotating direction: | same |
| | Coolant: | EXT |
| | Center distance [mm]: | 85 |
| 8 031 55 022 | Radial milling head universal arbor 22 | |
|  | Weight [kg]: | 8.100 |
| | Notation: | 180° reversible |
| | Tool drive: | Flat (~DIN 1809) |
| | Shank size [mm]: | 55.00 |
| | Shank type: | BMT |
| | Tool adaption: | Universal arbor 22 |
| | Gear ratio [i]: | 2:1 |
| | Torque max [Nm]: | 63 |
| | Rotation max [1/min]: | 3000 |
| | Rotating direction: | opposite |
| | Coolant: | EXT |
| | Please note: | Combi bearing |
| | Center distance [mm]: | 85 |
| 8 037 54 025 | Radial disk mill head arbor 16 | |
|  | Version: | 360° turnable |
| | Tool drive: | Flat (~DIN 1809) |
| | Shank size [mm]: | 55.00 |
| | Shank type: | BMT |
| | Tool adaption: | Arbor 16 |
| | Gear ratio [i]: | 1:1 |
| | Torque max [Nm]: | 50 |
| | Rotation max [1/min]: | 4000 |
| | Rotating direction: | opposite |
| | Coolant: | EXT |
| | Please note: | Check applicability; note tool length; |
| | Center distance [mm]: | 89 |
| 8 037 55 039 | Radial disk mill head arbor 1" | |
|  | Weight [kg]: | 10.220 |
| | Tool drive: | Flat (~DIN 1809) |
| | Shank size [mm]: | 55.00 |
| | Shank type: | BMT |
| | Tool adaption: | Arbor 1" (25,4mm) |
| | Gear ratio [i]: | 2:1 |
| | Torque max [Nm]: | 80 |
| | Rotation max [1/min]: | 4000 |
| | Rotating direction: | same |
| | Coolant: | EXT |
| | Please note: | Check applicability; note tool length; |
| | Center distance [mm]: | 81 |

| Part-# | Name | |
|---|-----------------------|---|
|  | 8 039 55 026 | Radial drilling and milling head ER 25 AX UT |
| | Weight [kg]: | 7.000 |
| | Notation: | 180° reversible |
| | Employment for: | Main- and sub spindle |
| | Version: | double spindle |
| | Tool drive: | Flat (~DIN 1809) |
| | Shank size [mm]: | 55.00 |
| | Shank type: | BMT |
| | Tool adaption: | ER 25 A - u-tec |
| | Gear ratio [i]: | 1:1 |
| | Torque max [Nm]: | 50 |
| | Rotation max [1/min]: | 12000 |
| | Rotating direction: | same/opposite |
| | Coolant: | EXT |
| Please note: | stronger bearing | |
| Center distance [mm]: | 85 | |
|  | 8 039 56 029 | Radial drilling and milling head ER 32 AX UT |
| | Weight [kg]: | 6.840 |
| | Notation: | 180° reversible |
| | Employment for: | Main- and sub spindle |
| | Version: | double spindle |
| | Tool drive: | Flat (~DIN 1809) |
| | Shank size [mm]: | 55.00 |
| | Shank type: | BMT |
| | Tool adaption: | ER 32 A - u-tec |
| | Gear ratio [i]: | 1:1 |
| | Torque max [Nm]: | 50 |
| | Rotation max [1/min]: | 12000 |
| | Rotating direction: | same/opposite |
| | Coolant: | EXT |
| Please note: | stronger bearing | |
| Center distance [mm]: | 85 | |
|  | 8 039 56 045 | Radial drilling and milling head ER 32 AX UT |
| | Weight [kg]: | 8.600 |
| | Notation: | 180° reversible |
| | Employment for: | Main- and sub spindle |
| | Version: | double spindle |
| | Tool drive: | Flat (~DIN 1809) |
| | Shank size [mm]: | 55.00 |
| | Shank type: | BMT |
| | Tool adaption: | ER 32 A - u-tec |
| | Gear ratio [i]: | 1:1 |
| | Torque max [Nm]: | 50 |
| | Rotation max [1/min]: | 6000 |
| | Rotating direction: | same/opposite |
| | Coolant: | EXT |
| Please note: | stronger bearing | |
| Center distance [mm]: | 100 | |

| Part-# | Name |
|--------|------|
|--------|------|

8 040 54 023



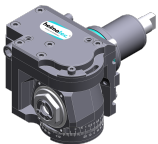
Universal head ± 90° adjustable ER 16 AX UT IC
 Weight [kg]: 5.770
 Notation: 180° reversible
 Tool drive: Flat (~DIN 1809)
 Shank size [mm]: 55.00
 Shank type: BMT
 Tool adaption: ER 16 A - u-tec
 Gear ratio [i]: 1:1
 Torque max [Nm]: 25
 Rotation max [1/min]: 6000
 Rotating direction: opposite
 Coolant: IC/Ext
 Pressure max [bar]: 140
 Center distance [mm]: 90

8 040 55 022



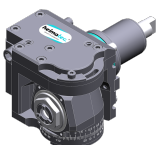
Universal head ± 90° adjustable ER 25 AX UT
 Weight [kg]: 5.930
 Notation: 180° reversible
 Version: Special
 Tool drive: Flat (~DIN 1809)
 Shank size [mm]: 55.00
 Shank type: BMT
 Tool adaption: ER 25 A - u-tec
 Gear ratio [i]: 1:1
 Torque max [Nm]: 25
 Rotation max [1/min]: 6000
 Rotating direction: opposite
 Coolant: EXT
 Center distance [mm]: 90

8 043 54 006



Universal head +110°/-20° adj. ER16 AX UT
 Weight [kg]: 5.940
 Notation: offset; 180° reversible
 Tool drive: Flat (~DIN 1809)
 Shank size [mm]: 55.00
 Shank type: BMT
 Tool adaption: ER 16 A - u-tec
 Gear ratio [i]: 1:1
 Torque max [Nm]: 25
 Rotation max [1/min]: 6000
 Rotating direction: opposite
 Coolant: EXT
 Center distance [mm]: 50
 Offset [mm]: 35

8 043 54 013



Universal head +110°/-20° adj. ER16 AX UT
 Weight [kg]: 6.320
 Notation: offset; 180° reversible
 Tool drive: Flat (~DIN 1809)
 Shank size [mm]: 55.00
 Shank type: BMT
 Tool adaption: ER 16 A - u-tec
 Gear ratio [i]: 1:2
 Torque max [Nm]: 12
 Rotation max [1/min]: 12000
 Rotating direction: opposite

| Part-# | Name | |
|---|---|-------------------------------|
| | Coolant: | EXT |
| | Center distance [mm]: | 50 |
| | Offset [mm]: | 35 |
| 8 043 55 005 | Universal head +110°/-20° adj. ER25 AX UT | |
|  | Weight [kg]: | 6.170 |
| | Notation: | offset, 180° reversible |
| | Tool drive: | Flat (~DIN 1809) |
| | Shank size [mm]: | 55.00 |
| | Shank type: | BMT |
| | Tool adaption: | ER 25 A - u-tec |
| | Gear ratio [i]: | 1:1 |
| | Torque max [Nm]: | 25 |
| | Rotation max [1/min]: | 6000 |
| | Rotating direction: | opposite |
| | Coolant: | EXT |
| | Please note: | stronger bearing |
| | Center distance [mm]: | 50 |
| | Offset [mm]: | 35 |
| 8 043 55 009 | Universal head +110°/-20° adj. ER25AX UTIK | |
|  | Weight [kg]: | 6.320 |
| | Notation: | offset, 180° reversible |
| | Tool drive: | Flat (~DIN 1809) |
| | Shank size [mm]: | 55.00 |
| | Shank type: | BMT |
| | Tool adaption: | ER 25 A - u-tec |
| | Gear ratio [i]: | 1:1 |
| | Torque max [Nm]: | 25 |
| | Rotation max [1/min]: | 6000 |
| | Rotating direction: | opposite |
| | Coolant: | IC/Ext |
| | Pressure max [bar]: | 25 |
| | Please note: | stronger bearing |
| | Center distance [mm]: | 50 |
| | Offset [mm]: | 35 |
| 8 043 55 027 | Universal head +110°/-20° adj. ER25 AX UT | |
|  | Weight [kg]: | 6.180 |
| | Notation: | offset, 180° reversible |
| | Version: | at 45° position can be pinned |
| | Tool drive: | Flat (~DIN 1809) |
| | Shank size [mm]: | 55.00 |
| | Shank type: | BMT |
| | Tool adaption: | ER 25 A - u-tec |
| | Gear ratio [i]: | 1:1 |
| | Torque max [Nm]: | 25 |
| | Rotation max [1/min]: | 6000 |
| | Rotating direction: | opposite |
| | Coolant: | EXT |
| | Please note: | stronger bearing |
| | Center distance [mm]: | 50 |
| | Offset [mm]: | 35 |

| Part-# | Name | |
|--------------|---|--|
| 8 053 54 021 | Multispindle radial head ER 16 AX UT |  |
| | | <p>Weight [kg]: 8.510 Notation: 180° reversible Version: 2-spindles Tool drive: Flat (~DIN 1809) Shank size [mm]: 55.00 Shank type: BMT Tool adaption: ER 16 A - u-tec Gear ratio [i]: 1:1 Torque max [Nm]: 25 Rotation max [1/min]: 6000 Rotating direction: same Coolant: EXT Center distance [mm]: 85</p> |
| 8 053 54 029 | Multispindle radial head ER 16 AX UT |  |
| | | <p>Weight [kg]: 8.440 Notation: 180° reversible Version: 2-spindles Tool drive: Flat (~DIN 1809) Shank size [mm]: 55.00 Shank type: BMT Tool adaption: ER 16 A - u-tec Gear ratio [i]: 1:2 Torque max [Nm]: 8 Rotation max [1/min]: 12000 Rotating direction: same Coolant: EXT Center distance [mm]: 85</p> |
| 8 200 02 003 | Cover plate |  |
| | | <p>Weight [kg]: 0.361 Shank size [mm]: 55.00 Shank type: BMT</p> |
| 8 202 00 009 | Basic holder longitudinal seat FN 12 |  |
| | | <p>Weight [kg]: 1.140 Notation: 180° reversible Shank type: BMT Machine adaption: Centering key b 15 Tool adaption: Interface FN 12 Coolant: EXT</p> |
| 8 224 03 003 | Cut-off holder SH 32 |  |
| | | <p>Weight [kg]: 1.810 Notation: 180° reversible Employment for: Cut-off tool 32 Version: Clamshaft on turret side Shank type: BMT Machine adaption: Centering key b 15 Tool adaption: Clamshaft SH 32 Coolant: EXT</p> |

| Part-# | Name | |
|---|---|------------------------------|
| 8 224 04 002 | Universal turning holder sq. 20 | |
|  | Weight [kg]: | 3.460 |
| | Shank type: | BMT |
| | Machine adaption: | Centering key b 15 |
| | Tool adaption: | Sq. 20 |
| | Coolant: | EXT |
| 8 224 04 062 | Universal turning holder sq. 20 IC | |
|  | Weight [kg]: | 3.020 |
| | Shank type: | BMT |
| | Machine adaption: | Centering key b 15 |
| | Tool adaption: | Sq. 20 |
| | | Sq. 20 |
| | Coolant: | IC/Ext |
| | Pressure max [bar]: | 100 |
| | Please note: | Key rail |
| 8 224 05 003 | Universal turning holder sq. 25 | |
| | Weight [kg]: | 3.620 |
| | Notation: | 180° reversible |
| | Shank type: | BMT |
| | Machine adaption: | Centering key b 15 |
| | Tool adaption: | Sq. 25 |
| | Coolant: | EXT |
| 8 224 05 005 | Universal turning holder sq. 1" | |
|  | Weight [kg]: | 3.560 |
| | Shank type: | BMT |
| | Machine adaption: | Centering key b 15 |
| | Tool adaption: | Sq. 1" (25,4mm) |
| | Coolant: | EXT |
| 8 224 05 015 | Universal turning holder sq. 25/20 | |
|  | Weight [kg]: | 3.780 |
| | Notation: | 180° reversible |
| | Shank type: | BMT |
| | Machine adaption: | Centering key b 15 |
| | Tool adaption: | Sq. 25/20 |
| | Coolant: | EXT |
| | Pressure max [bar]: | 80 |
| | Please note: | with spacer strip for sq. 20 |
| 8 224 05 023 | Universal turning holder sq. 25/20 | |
|  | Weight [kg]: | 3.150 |
| | Notation: | 180° reversible |
| | Shank type: | BMT |
| | Machine adaption: | Centering key b 15 |
| | Tool adaption: | Sq. 25/20 |
| | Coolant: | EXT |
| | Please note: | with spacer strip for sq. 20 |

| Part-# | Name | |
|---|---|-------------------------|
| 8 240 07 043 | Boring bar holder Ø 1 1/4" | |
|  | Weight [kg]: | 7.540 |
| | Notation: | 180° reversible |
| | Shank type: | BMT |
| | Machine adaption: | Centering key b 15 |
| | Tool adaption: | Ø 1 1/4" (31,75mm) |
| | Coolant: | IC/Ext |
| | Center distance [mm]: | 95 |
| 8 240 08 061 | Boring bar holder Ø 32 | |
|  | Weight [kg]: | 6.490 |
| | Notation: | 180° reversible |
| | Employment for: | Main- and sub spindle |
| | Shank type: | BMT |
| | Machine adaption: | Centering key b 15 |
| | Tool adaption: | Ø 32 |
| | Coolant: | IC/Ext |
| | Center distance [mm]: | 80 |
| 8 240 09 039 | Boring bar holder Ø 40 | |
|  | Weight [kg]: | 7.050 |
| | Notation: | 180° reversible |
| | Employment for: | Main- and sub spindle |
| | Shank type: | BMT |
| | Machine adaption: | Centering key slot b 15 |
| | Tool adaption: | Ø 40 |
| | Coolant: | IC/Ext |
| | Center distance [mm]: | 95 |
| 8 244 05 003 | Combi facing holder sq. 25 | |
|  | Weight [kg]: | 5.340 |
| | Notation: | 180° reversible |
| | Employment for: | Main- and sub spindle |
| | Shank type: | BMT |
| | Machine adaption: | Centering key b 15 |
| | Tool adaption: | Sq. 25 |
| | Coolant: | EXT |
| | Pressure max [bar]: | 80 |
| 8 244 05 006 | Combi facing holder sq. 1" | |
|  | Weight [kg]: | 5.310 |
| | Notation: | 180° reversible |
| | Employment for: | Main- and sub spindle |
| | Shank type: | BMT |
| | Machine adaption: | Centering key b 15 |
| | Tool adaption: | Sq. 1" (25,4mm) |
| | Coolant: | EXT |
| 8 251 05 001 | Combi double turning holder sq. 25 | |
|  | Weight [kg]: | 7.700 |
| | Employment for: | Main- and sub spindle |
| | Shank type: | BMT |
| | Machine adaption: | Centering key b 15 |
| | Tool adaption: | Sq. 25 |
| | | Sq. 25 |

| Part-# | Name | |
|---|--|---|
| | | Sq. 25 Sq. 25 EXT 80 |
| | Coolant: Pressure max [bar]: | |
| 8 259 04 007 | Multiple turning holder sq. 20 | |
|  | Weight [kg]: Notation: Employment for: Version: Shank type: Machine adaption: Tool adaption: | 8.180 180° reversible Main- and sub spindle Special BMT Centering key b 15 Sq. 20 Sq. 20 Sq. 20 IC/Ext |
| | Coolant: | |
| 8 320 03 008 | Cut-off holder, height adjustable SH 32 IC | |
|  | Weight [kg]: Notation: Shank type: Machine adaption: Tool adaption: Coolant: Pressure max [bar]: | 1.790 180° reversible BMT Centering key b 15 Clampshaft SH 32 IC/Ext 70 |
| 8 320 03 025 | Cut-off holder, height adjustable SH 32 IC | |
|  | Weight [kg]: Notation: Shank type: Machine adaption: Tool adaption: Coolant: Pressure max [bar]: Please note: | 1.910 180° reversible BMT Centering key b 15 Clampshaft SH 32 IC/Ext 70 Clampshaft internal |
| 8 320 09 001 | Cut-off holder, height adjustable 845 IC | |
|  | Weight [kg]: Notation: Shank type: Machine adaption: Tool adaption: Coolant: Pressure max [bar]: | 1.730 180° reversible BMT Centering key b 15 HORN System 845 IC 70 |

heimatec.u-tec®

heimatec.com

Products / Tool change systems /
u-tec® Tool-changing system



versions see catalog



heimatec.easy-quick

heimatec.com

Products / Tool change systems /
easy-quick HT quick-changing system



versions see catalog



heimatec.Capto™

heimatec.com

Products / Tool change systems /
heimatec.Capto™ quick-changing system



versions see catalog



heimatec.accessories

heimatec.com

Products / Accessories



versions see catalog





● heimatec overseas branches

○ global representations of heimatec

heimatec[®]

heimatec GmbH
Präzisionswerkzeuge
Carl-Benz-Str. 4
77871 Renchen
Germany

T +49 7843 9466 0
www.heimatec.com
info@heimatec.com

Please find the contact details of our worldwide trading partners on our website:
<https://heimatec.com/business-partners>