

Citizen  
**Ocean Cincom**  
**GN 3200 W**



# High-tech from heimatec - heimatec - Tools and systems for productive turning and milling

heimatec belongs to the international technology and quality leaders for precision tools and specializes in the development and production of high-precision static and live tools for all CNC lathes, CNC turn-/mill machines and CNC machining centers.

The range of products\* spans from static BMT and VDI tool holders, live tools up to highly complex customer-specific individual solutions. heimatec, headquartered in Renchen, has a own subsidiary in Asia and India and numerous representatives as well as trading partners all over the world.

## \*OUR PRODCUTS

Static tool holders

Live tool units

Precision tools

Tools for turning and machining centres

Tools for swiss type lathes

Tool changing and uick-change systems

Tool systems for gear production

Digital tool management

This catalogue, including all its parts, is protected by copyright. Any use outside the restricted limitations of the Copyright Act without the consent of heimatec is inadmissible and liable to prosecution. This applies in particular to duplication, translation, microfilming and storage and processing in electronic systems.

**heimatec GmbH** reserves the right to make technical changes at any time without giving prior notice. This applies in particular to adjustments at any time to meet new or changed international standards, or in case of further developments of our products or manufacturing processes.

The current version of our General Terms and Conditions can be found on our website.

Part-#	Name	
<b>8 209 00 004</b>	<b>Basic plate for tool system</b>	
	Weight [kg]:	3.210
	Machine adaption:	Centering key b 14
<b>8 224 03 009</b>	<b>Turning holder sq. 16</b>	
	Weight [kg]:	1.830
	Version:	right
	Machine adaption:	Interface SZ 120
	Tool adaption:	Sq. 16
	Coolant:	EXT
	Please note:	with spacer strip, reversible
<b>8 224 03 010</b>	<b>Turning holder sq. 16</b>	
	Version:	left
	Machine adaption:	Interface SZ 120
	Tool adaption:	Sq. 16
	Coolant:	EXT
	Please note:	with spacer strip, reversible
<b>8 240 06 020</b>	<b>Boring bar holder Ø 20</b>	
	Weight [kg]:	1.220
	Shank type:	BMT
	Machine adaption:	Interface SZ 120
	Tool adaption:	Ø 20
	Coolant:	IC/Ext
	Center distance [mm]:	35
<b>8 240 06 021</b>	<b>Boring bar holder Ø 20</b>	
	Version:	offset
	Shank type:	BMT
	Machine adaption:	Interface SZ 120
	Tool adaption:	Ø 20
	Coolant:	IC/Ext
	Center distance [mm]:	35
<b>8 240 06 022</b>	<b>Adapter for sensor Blum TC 67</b>	
	Weight [kg]:	2.500
	Shank type:	BMT
	Machine adaption:	Centering key b 14
	Tool adaption:	Ø 22
	Center distance [mm]:	55
<b>8 240 07 040</b>	<b>Boring bar holder Ø 25 slotted</b>	
	Weight [kg]:	2.150
	Version:	Special
	Shank type:	BMT
	Machine adaption:	Interface SZ 120
	Tool adaption:	Ø 25
	Coolant:	EXT

Citizen

## Ocean Cincom GN 3200 W

heimatec®

Part-#

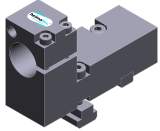
Name

Please note:  
Center distance [mm]:

For HF - spindle; Befestigung with slot nut on the  
55

**8 240 07 060**

**Boring bar holder Ø 30 slotted**



Weight [kg]:  
Version:  
Shank type:  
Machine adaption:  
Tool adaption:  
Coolant:  
Please note:  
Center distance [mm]:

2.080  
Special  
BMT  
Interface SZ 120  
Ø 30  
EXT  
For HF - spindle; Befestigung with slot nut on the  
55

**8 248 04 000**

**Collet chuck holder ER 16 AX UT IC**



Weight [kg]:  
Notation:  
Shank type:  
Machine adaption:  
Tool adaption:  
Coolant:  
Please note:  
Center distance [mm]:

2.070  
Y-axes adjustable  
BMT  
Interface SZ 120  
ER 16 A - u-tec  
IC/Ext  
height adjustable ± 0,3 mm  
35





## heimatec.u-tec®

heimatec.com

Products / Tool change systems /  
u-tec® Tool-changing system



versions see catalog



## heimatec.easy-quick

heimatec.com

Products / Tool change systems /  
easy-quick HT quick-changing system



versions see catalog



## heimatec.Capto™

heimatec.com

Products / Tool change systems /  
heimatec.Capto™ quick-changing system



versions see catalog



## heimatec.accessories

heimatec.com

Products / Accessories



versions see catalog





● heimatec overseas branches

○ global representations of heimatec

**heimatec**<sup>®</sup>

**heimatec GmbH**  
Präzisionswerkzeuge  
Carl-Benz-Str. 4  
77871 Renchen  
Germany

T +49 7843 9466 0  
[www.heimatec.com](http://www.heimatec.com)  
[info@heimatec.com](mailto:info@heimatec.com)

Please find the contact details of our worldwide trading partners on our website:  
<https://heimatec.com/business-partners>