

Okuma
**LU 2500 EX M -
BMT**



High-tech from heimatec - heimatec - Tools and systems for productive turning and milling

heimatec belongs to the international technology and quality leaders for precision tools and specializes in the development and production of high-precision static and live tools for all CNC lathes, CNC turn-/mill machines and CNC machining centers.

The range of products* spans from static BMT and VDI tool holders, live tools up to highly complex customer-specific individual solutions. heimatec, headquartered in Renchen, has a own subsidiary in Asia and India and numerous representatives as well as trading partners all over the world.

*OUR PRODCUTS

Static tool holders

Live tool units

Precision tools

Tools for turning and machining centres

Tools for swiss type lathes

Tool changing and uick-change systems


Tool systems for gear production



Digital tool management

This catalogue, including all its parts, is protected by copyright. Any use outside the restricted limitations of the Copyright Act without the consent of heimatec is inadmissible and liable to prosecution. This applies in particular to duplication, translation, microfilming and storage and processing in electronic systems.

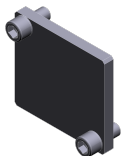
heimatec GmbH reserves the right to make technical changes at any time without giving prior notice. This applies in particular to adjustments at any time to meet new or changed international standards, or in case of further developments of our products or manufacturing processes.

The current version of our General Terms and Conditions can be found on our website.




Part-#	Name	
8 010 66 071	Axial drilling and milling head ER 32 AX UT	
	Weight [kg]:	3.840
	Tool drive:	Flat (~DIN 1809)
	Shank size [mm]:	60.00
	Shank type:	BMT
	Tool adaption:	ER 32 A - u-tec
	Gear ratio [i]:	1:1
	Torque max [Nm]:	70
	Rotation max [1/min]:	6000
	Rotating direction:	same
	Coolant:	EXT
	Please note:	Combi bearing
8 010 66 072	Axial drilling and milling head ER 32 AX UT IC	
	Weight [kg]:	3.810
	Tool drive:	Flat (~DIN 1809)
	Shank size [mm]:	60.00
	Shank type:	BMT
	Tool adaption:	ER 32 A - u-tec
	Gear ratio [i]:	1:1
	Torque max [Nm]:	70
	Rotation max [1/min]:	6000
	Rotating direction:	same
	Coolant:	IC/Ext
	Pressure max [bar]:	25
	Please note:	Combi bearing
8 010 66 073	Axial drilling and milling head ER 32 AX UT IC	
	Tool drive:	Flat (~DIN 1809)
	Shank size [mm]:	60.00
	Shank type:	BMT
	Tool adaption:	ER 32 A - u-tec
	Gear ratio [i]:	1:1
	Torque max [Nm]:	70
	Rotation max [1/min]:	6000
	Rotating direction:	same
	Coolant:	IC/Ext
	Pressure max [bar]:	100
	Please note:	Combi bearing; dryrun possible
8 010 67 034	Axial drilling and milling head HT 5 IC	
	Tool drive:	Flat (~DIN 1809)
	Shank size [mm]:	60.00
	Shank type:	BMT
	Tool adaption:	HT 5
	Gear ratio [i]:	1:1
	Torque max [Nm]:	70
	Rotation max [1/min]:	6000
	Rotating direction:	same
	Coolant:	IC/Ext
	Pressure max [bar]:	25
	Please note:	Combi bearing




Part-#	Name	
8 011 66 013	Axial milling head universal arbor 27	
	Weight [kg]:	4.050
	Tool drive:	Flat (~DIN 1809)
	Shank size [mm]:	60.00
	Shank type:	BMT
	Tool adaption:	Universal arbor 27
	Gear ratio [i]:	1:1
	Torque max [Nm]:	70
	Rotation max [1/min]:	6000
	Rotating direction:	same
	Coolant:	EXT
	Please note:	Combi bearing
8 019 66 009	Axial drilling and milling head ER 32 AX UT	
	Notation:	offset; 180° reversible
	Tool drive:	Flat (~DIN 1809)
	Shank size [mm]:	60.00
	Shank type:	BMT
	Tool adaption:	ER 32 A - u-tec
	Gear ratio [i]:	1:1
	Torque max [Nm]:	50
	Rotation max [1/min]:	6000
	Rotating direction:	opposite
	Coolant:	EXT
	Please note:	stronger bearing
	Offset [mm]:	50
8 030 66 091	Radial drilling and milling head ER 32 AX UT	
	Notation:	180° reversible
	Tool drive:	Flat (~DIN 1809)
	Shank size [mm]:	60.00
	Shank type:	BMT
	Tool adaption:	ER 32 A - u-tec
	Gear ratio [i]:	2:1
	Torque max [Nm]:	63
	Rotation max [1/min]:	3000
	Rotating direction:	opposite
	Coolant:	EXT
	Please note:	Note reverse rotation! combi bearing
	Center distance [mm]:	70
8 030 66 271	Radial drilling and milling head ER 32 AX UT	
	Weight [kg]:	7.780
	Notation:	180° reversible
	Tool drive:	Flat (~DIN 1809)
	Shank size [mm]:	60.00
	Shank type:	BMT
	Tool adaption:	ER 32 A - u-tec
	Gear ratio [i]:	1:1
	Torque max [Nm]:	70
	Rotation max [1/min]:	10000
	Rotating direction:	same
	Coolant:	EXT
	Center distance [mm]:	70

Part-#	Name	
	Center distance [mm]:	70
8 037 64 026	Radial disk mill head arbor 3/4"	
	Weight [kg]:	7.990
	Version:	± 50° turnable; special
	Tool drive:	Flat (~DIN 1809)
	Shank size [mm]:	60.00
	Shank type:	BMT
	Tool adaption:	Arbor 3/4" (19,05mm)
	Gear ratio [i]:	1:1
	Torque max [Nm]:	40
	Rotation max [1/min]:	4000
	Rotating direction:	opposite
	Coolant:	no
	Center distance [mm]:	92
8 037 64 036	Radial disk mill head arbor 3/4"	
	Version:	± 50° turnable
	Tool drive:	Flat (~DIN 1809)
	Shank size [mm]:	60.00
	Shank type:	BMT
	Tool adaption:	Arbor 3/4" (19,05mm)
	Gear ratio [i]:	1:1
	Torque max [Nm]:	40
	Rotation max [1/min]:	4000
	Rotating direction:	opposite
	Coolant:	no
	Center distance [mm]:	92
8 037 64 038	Radial disk mill head arbor 3/4"	
	Weight [kg]:	8.110
	Version:	± 45° turnable; special
	Tool drive:	Flat (~DIN 1809)
	Shank size [mm]:	60.00
	Shank type:	BMT
	Tool adaption:	Arbor 3/4" (19,05mm)
	Gear ratio [i]:	1:1
	Torque max [Nm]:	40
	Rotation max [1/min]:	4000
	Rotating direction:	opposite
	Coolant:	no
	Please note:	Check applicability!
	Center distance [mm]:	92
8 200 63 000	Cover plate 91,0x100,0x 10,0	
	Weight [kg]:	0.830
	Shank size [mm]:	60.00
	Shank type:	BMT



Part-#	Name	
8 202 00 015	Basic holder longitudinal seat FN 12	
	Weight [kg]:	1.560
	Shank type:	BMT
	Machine adaption:	Centering key slot b 15
	Tool adaption:	Interface FN 12
	Coolant:	EXT
	Center distance [mm]:	16
8 202 00 026	Basic holder longitudinal seat FN 12	
	Weight [kg]:	1.910
	Shank type:	BMT
	Machine adaption:	Centering key slot b 15
	Tool adaption:	Interface FN 12
	Coolant:	EXT
	Center distance [mm]:	34,5
8 209 04 000	Adapter for VDI 40	
	Weight [kg]:	5.280
	Notation:	180° reversible; offset
	Shank type:	BMT
	Machine adaption:	Centering key slot b 15
	Tool adaption:	DIN 69880 - 40
	Coolant:	EXT
	Center distance [mm]:	90
8 224 03 000	Cut-off holder SH 32	
	Weight [kg]:	2.540
	Employment for:	Cut-off tool 32
	Version:	Clampshaft on turret side
	Shank type:	BMT
	Machine adaption:	Centering key slot b 15
	Tool adaption:	Clampshaft SH 32
	Coolant:	EXT
8 224 03 001	Cut-off holder SH 32	
	Weight [kg]:	2.300
	Employment for:	Cut-off tool 32
	Version:	Clampshaft on turret center
	Shank type:	BMT
	Machine adaption:	Centering key slot b 15
	Tool adaption:	Clampshaft SH 32
	Coolant:	EXT
8 224 05 001	Universal turning holder sq. 25	
	Weight [kg]:	4.360
	Shank type:	BMT
	Machine adaption:	Centering key slot b 15
	Tool adaption:	Sq. 25
	Coolant:	EXT
8 224 05 004	Universal turning holder sq. 1"	
	Weight [kg]:	4.340
	Shank type:	BMT
	Machine adaption:	Centering key slot b 15
	Tool adaption:	Sq. 1" (25,4mm)
		Sq. 1" (25,4mm)
	Coolant:	EXT

Part-#	Name	
8 240 06 001	Tool holder C 4 IC	
	Weight [kg]:	5.980
	Notation:	180° reversible
	Shank type:	BMT
	Machine adaption:	Centering key slot b 15
	Tool adaption:	heimatec Capto(TM) C 4
	Coolant:	IC/Ext
	Center distance [mm]:	90
8 240 06 007	Collet chuck holder ER 32	
	Weight [kg]:	6.500
	Notation:	180° reversible
	Shank type:	BMT
	Machine adaption:	Centering key slot b 15
	Tool adaption:	ER 32
	Coolant:	IC/Ext
	Center distance [mm]:	90
8 240 08 001	Boring bar holder Ø 32	
	Weight [kg]:	5.920
	Notation:	180° reversible
	Shank type:	BMT
	Machine adaption:	Centering key slot b 15
	Tool adaption:	Ø 32
	Coolant:	IC/Ext
	Center distance [mm]:	90
8 240 08 007	Boring bar holder Ø 1 1/2"	
	Weight [kg]:	5.720
	Notation:	180° reversible
	Shank type:	BMT
	Machine adaption:	Centering key slot b 15
	Tool adaption:	Ø 1 1/2" (38,1mm)
	Coolant:	IC/Ext
	Center distance [mm]:	90
8 240 09 007	Boring bar holder Ø 40	
	Weight [kg]:	5.640
	Notation:	180° reversible
	Shank type:	BMT
	Machine adaption:	Centering key slot b 15
	Tool adaption:	Ø 40
	Coolant:	IC/Ext
	Center distance [mm]:	90
8 244 05 001	Combi facing holder sq. 25	
	Weight [kg]:	6.160
	Employment for:	Main- and sub spindle
	Shank type:	BMT
	Machine adaption:	Centering key slot b 15
	Tool adaption:	Sq. 25
	Coolant:	EXT
	Please note:	only with MW machines for sub spindle

Part-#	Name	
8 244 05 011	Combi facing holder sq. 25	
	Weight [kg]:	9.125
	Employment for:	Main- and sub spindle
	Shank type:	BMT
	Machine adaption:	Centering key slot b 15
	Tool adaption:	Sq. 25
		Sq. 25
	Coolant:	EXT
	Please note:	only with MW machines for sub spindle
8 320 03 014	Cut-off holder, height adjustable SH 32 IC	
	Weight [kg]:	2.190
	Shank type:	BMT
	Machine adaption:	Centering key slot b 15
	Tool adaption:	Clampshaft SH 32
	Coolant:	IC/Ext
	Pressure max [bar]:	70
8 320 09 005	Cut-off holder, height adjustable 845 IC	
	Shank type:	BMT
	Machine adaption:	Centering key slot b 15
	Tool adaption:	 System 845
	Coolant:	IC
	Pressure max [bar]:	70



heimatec.u-tec®

heimatec.com

Products / Tool change systems /
u-tec® Tool-changing system



versions see catalog



heimatec.easy-quick

heimatec.com

Products / Tool change systems /
easy-quick HT quick-changing system



versions see catalog



heimatec.Capto™

heimatec.com

Products / Tool change systems /
heimatec.Capto™ quick-changing system



versions see catalog



heimatec.accessories

heimatec.com

Products / Accessories



versions see catalog





● heimatec overseas branches

○ global representations of heimatec

heimatec[®]

heimatec GmbH
Präzisionswerkzeuge
Carl-Benz-Str. 4
77871 Renchen
Germany

T +49 7843 9466 0
www.heimatec.com
info@heimatec.com

Please find the contact details of our worldwide trading partners on our website:
<https://heimatec.com/business-partners>