

heimatec®

heimatec.pti

Series tools
for the polygonal
interface pti



MADE IN GERMANY

heimatec.pti

Series tools for the polygonal interface pti

Already submitted for standardization approval, the new pti wants to allow improvements to quality and productivity in turning processes. heimatec, as a member of the extended circle of experts in the pti Working Group, presents a comprehensive range of series-capable tools in all pti sizes.

Improvements in workpiece quality, as well as increases in productivity during the entire process were the twin central themes in developing a new tool interface for turning machines. What emerged was the eight-fold rotary pti (polygonal turning interface), which has already been submitted for DIN 69108 standardization.

The particular characteristics of the turning machine pti

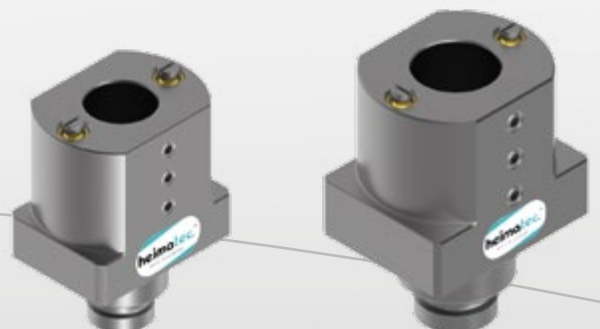
Owing to its high torsional rigidity and flexional strength, the pti is a high-load capable rotary interface, allowing high torque transfer. The interface permits a stronger motor shaft and along with the opportunity to implement a backlash-free coupling, milling performance for driven tools may be increased by more than 30%. On grounds of the high-precision geometry, in many cases tool alignment is no longer necessary. Owing to this and with the pti version quick-change system, machinery downtimes may be considerably reduced and productivity increased at the same time. Furthermore, pti tools are equipped for data and energy transfer and are thus I4.0 optimized.

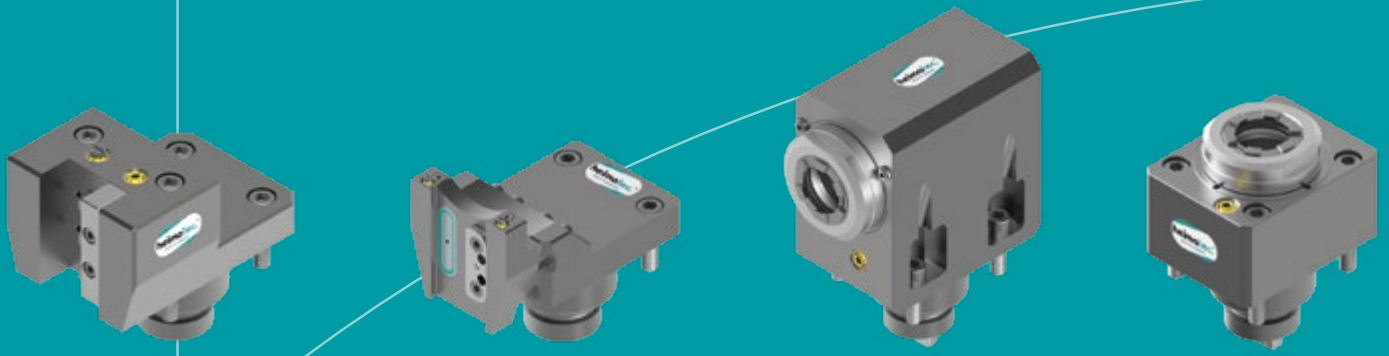
Static holders and driven tooling units in all pti sizes

heimatec is a member of the extended experts' circle of the pti Working Group and is thus able to present series-capable pti tools. Owing to the high-precision geometry of the interface with dimensional tolerances at the μm level, the highest possible requirements of production expertise are met. heimatec, as one of the leaders in quality for precision tools, has extensive experience over many years and was therefore able to produce a usable tool range in the shortest possible time.

At the moment an axial boring and milling head, as well as a radial drilling head in the respective pti65 size, will be presented as driven tooling units. Furthermore, boring bar holders in all three sizes, pti45, pti54 and pti65, as well as a cutting-off tool holder and a turning holder in pti size 65, along with a static tool with a heimatec.Capto™ adapter may be examined.

Boring bar holders in sizes pti45, pti54 and pti65.

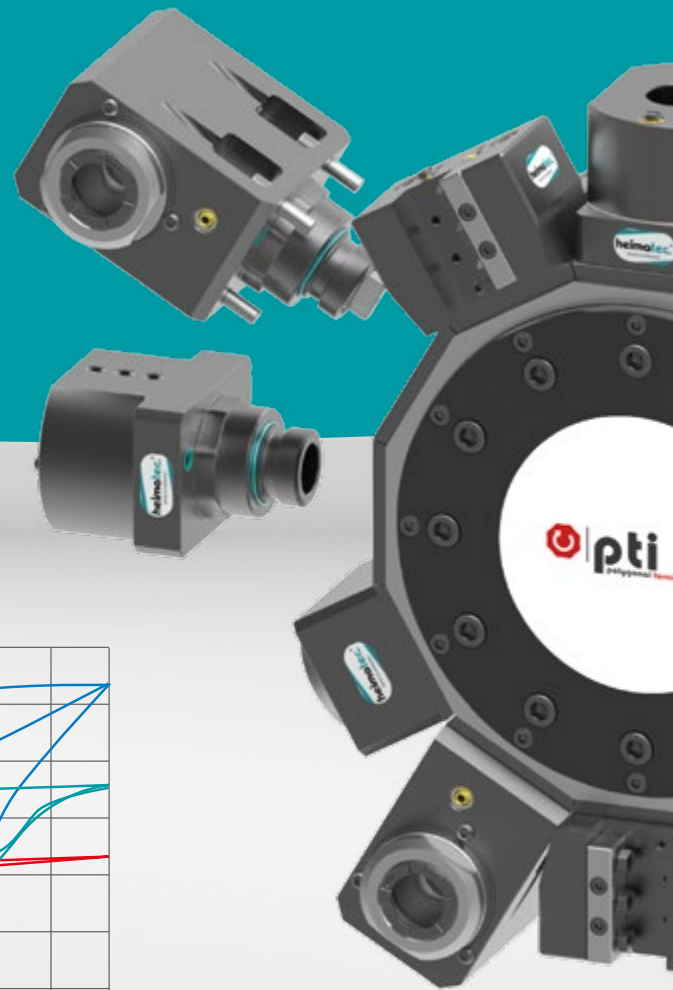




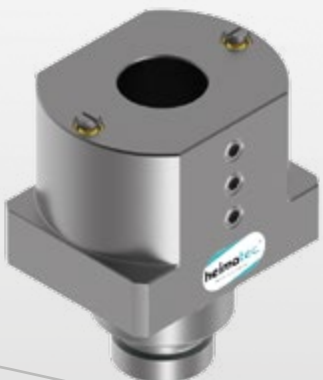
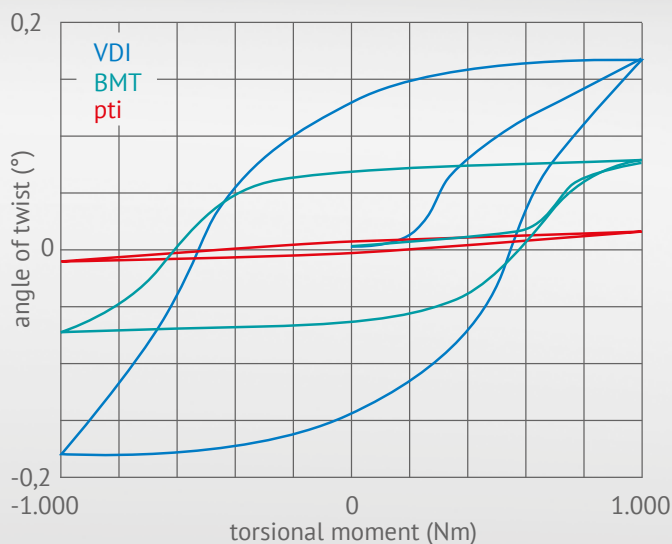
Important features and benefits

- Small size = compact
- Positive locking (polygon) = torsionally rigid
- Plan system and clamping system = rigid
- Tapered polygon shaft = precisely repeatable
- Manual fast change = cost saving
- Data and energy transfer = prepared for I4.0
- Tool holder 180° convertible = function-expanding
- Supply of coolant and air purge = technologically comprehensive

Further information about the polygonal interface pti can be found at: www.pti-interface.com



The new development far exceeds the usual interfaces VDI and BMT in terms of rigidity.





- heimatec overseas branches
- global representations of heimatec

heimatec[®]

heimatec GmbH
Präzisionswerkzeuge
Carl-Benz-Straße 4
D-77871 Renchen

T +49 78 43 94 66-0
www.heimatec.de
info@heimatec.de

Please find the contact details of our worldwide trading partners
on our website: <https://heimatec.com/en-US/index/partners>