

TOPSELLER -  
many more available!

Live Tools

heimatec®

# SPINNER

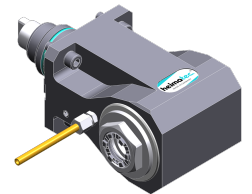
## TTS 125 /-XL - BMT 45

Part-#	Tool adaption	Rotation max [1/min]	Gear ratio	Coolant	Pressure max.	Center distance
<b>Axial drilling and milling head</b>						
8 010 45 135	<b>ER 25 A - u-tec</b>	15.000	1:1	EXT	--	--
<b>Radial drilling and milling head</b>						
8 030 45 612	<b>ER 25 A - u-tec</b>	10.000	1:1	EXT	--	<b>100 mm</b>
8 030 45 613	<b>ER 25 A - u-tec</b>	10.000	1:1	IC/Ext	140 bar	<b>100 mm</b>
<b>Radial drilling and milling head, double spindle</b>						
8 039 45 156	<b>ER 25 A - u-tec</b>	12.000	1:1	EXT	--	<b>100 mm</b>

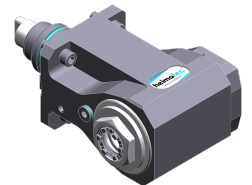
Illustrations similar.



8 010 45 135



8 030 45 612



8 030 45 613

**TOPSELLER -**  
many more available!

Static Tools

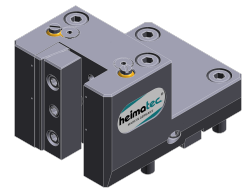
**heimatec**®

# SPINNER

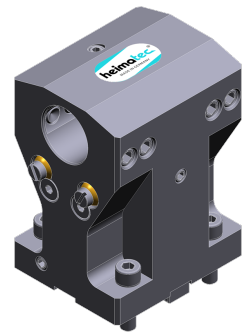
## TTS 125 /-XL - BMT 45

Part-#	Tool adaption	Coolant	Pressure max.	Center distance
<b>Universal turning holder</b>				
8 224 04 061	<b>Sq. 20</b>	IC/Ext	100 bar	--
8 224 04 074	<b>Sq. 20</b>	IC/Ext	100 bar	--
8 224 05 030	<b>Sq. 25</b>	IC/Ext	100 bar	--
8 224 05 040	<b>Sq. 25</b>	IC/Ext	100 bar	--
<b>Boring bar holder</b>				
8 240 07 020	<b>Ø 25</b>	IC/Ext	--	<b>100 mm</b>
8 240 08 023	<b>Ø 32</b>	IC/Ext	--	<b>100 mm</b>
8 240 09 018	<b>Ø 40</b>	IC/Ext	--	<b>100 mm</b>
<b>Double boring bar holder</b>				
8 249 08 005	<b>Ø 32</b>	IC/Ext	100 bar	<b>100 mm</b>
<b>Double turning holder</b>				
8 251 04 016	<b>Sq. 20</b>	EXT	--	--
8 251 04 050	<b>Sq. 20</b>	IC/Ext	100 bar	--
8 251 04 070	<b>Sq. 20</b>	IC/Ext	100 bar	--
8 251 05 015	<b>Sq. 25</b>	IC/Ext	100 bar	--
<b>Multiple boring bar holder</b>				
8 253 08 013	<b>Ø 32</b>	IC/Ext	100 bar	--
<b>Multiple turning holder</b>				
8 259 01 015	<b>Sq. 20</b>	EXT	--	--
8 259 01 016	<b>Sq. 20</b>	IC/Ext	100 bar	--
<b>Multiple boring bar holder, double</b>				
8 259 07 008	<b>Ø 25</b>	IC/Ext	100 bar	--
8 259 08 001	<b>Ø 32</b>	IC/Ext	140 bar	--

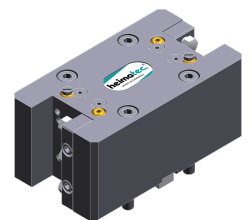
Illustrations similar.



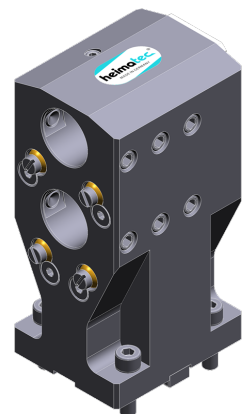
8 224 04 061



8 249 08 005



8 251 04 016



8 253 08 013

TOPSELLER -  
many more available!

Static Tools

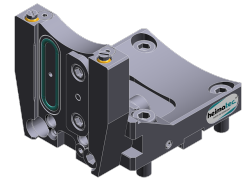
heimatec®

# SPINNER

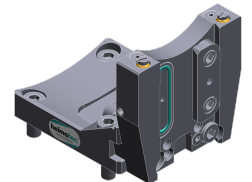
## TTS 125 /-XL - BMT 45

Part-#	Tool adaption	Coolant	Pressure max.	Center distance
<b>Cut-off holder, height adjustable</b>				
8 320 02 012	<b>Clampshaft SH 26</b>	IC/Ext	70 bar	--
8 320 03 011	<b>Clampshaft SH 32</b>	IC/Ext	70 bar	--

*Illustrations similar.*



8 320 02 012



8 320 03 011