

TOPSELLER -
many more available!

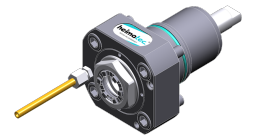
Live Tools

heimatec®

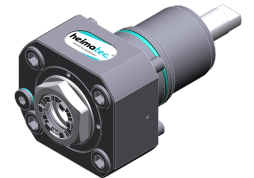
CMZ TX 52 Y3

Part-#	Tool adaption	Rotation max [1/min]	Gear ratio	Coolant	Pressure max.	Center distance
Axial drilling and milling head						
8 010 55 127	ER 25 A - u-tec	12.000	1:1	EXT	--	--
8 010 55 128	ER 25 A - u-tec	15.000	1:1	IC/Ext	100 bar	--
8 010 56 162	ER 32 A - u-tec	12.000	1:1	EXT	--	--
8 010 56 163	ER 32 A - u-tec	15.000	1:1	IC/Ext	100 bar	--
Radial drilling and milling head						
8 030 55 266	ER 25 A - u-tec	6.000	1:1	EXT	--	65 mm
8 030 55 265	ER 32 A - u-tec	6.000	1:1	IC/Ext	140 bar	65 mm
8 030 56 281	ER 32 A - u-tec	6.000	1:1	EXT	--	65 mm
8 030 56 282	ER 32 A - u-tec	6.000	1:1	IC/Ext	140 bar	65 mm
8 030 56 283	ER 32 A - u-tec	12.000	1:1	EXT	--	65 mm
8 030 56 284	ER 32 A - u-tec	12.000	1:1	IC/Ext	140 bar	65 mm
Radial drilling and milling head, double spindle						
8 039 55 241	ER 25 A - u-tec	12.000	1:1	EXT	--	65 mm
8 039 56 069	ER 32 A - u-tec	12.000	1:1	EXT	--	65 mm
Universal head, offset						
8 043 54 000	ER 16 A - u-tec	6.000	1:1	EXT	--	69 mm
8 043 54 001	ER 16 A - u-tec	6.000	1:1	IC/Ext	140 bar	69 mm

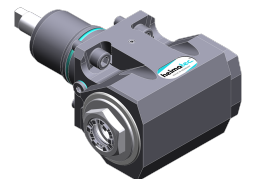
Illustrations similar.



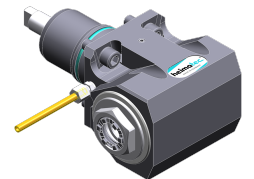
8 010 55 127



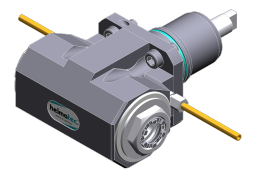
8 010 55 128



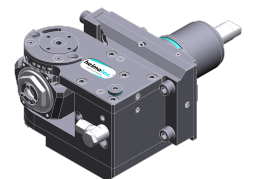
8 030 55 266



8 030 55 265



8 039 55 241



8 043 54 000

TOPSELLER -
many more available!

Static Tools

heimatec®

CMZ TX 52 Y3

Part-#	Tool adaption	Coolant	Pressure max.	Center distance
Cut-off holder				
8 224 13 007	Clampshaft SH 32	EXT	--	--
Universal turning holder				
8 224 14 016	Sq. 20	IC/Ext	100 bar	--
8 224 15 002	Sq. 25	EXT	--	--
8 224 15 062	Sq. 25	IC/Ext	100 bar	--
Boring bar holder				
8 240 17 005	Ø 25	IC/Ext	--	75 mm
8 240 18 010	Ø 32	IC/Ext	140 bar	75 mm
Double turning holder				
8 251 11 003	Sq. 20	EXT	--	--
8 251 14 100	Sq. 20	IC/Ext	100 bar	--
8 251 12 006	Sq. 25	EXT	--	--
8 251 15 048	Sq. 25	IC/Ext	100 bar	--
Combi multiple holder				
8 251 14 006	Sq. 20	EXT	--	--
8 251 14 074	Sq. 20	IC/Ext	100 bar	--
Cut-off holder, height adjustable				
8 320 12 010	Clampshaft SH 26	IC/Ext	70 bar	--
8 320 13 002	Clampshaft SH 32	IC/Ext	70 bar	--

Illustrations similar.



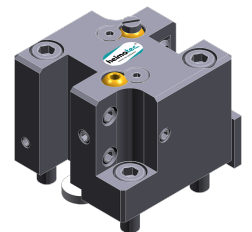
8 224 13 007



8 224 14 016



8 240 17 005



8 251 11 003