

SPINNER

TTS 125 /-XL -

BMT 65



High-tech from heimatec - heimatec - Tools and systems for productive turning and milling

heimatec belongs to the international technology and quality leaders for precision tools and specializes in the development and production of high-precision static and live tools for all CNC lathes, CNC turn-/mill machines and CNC machining centers.

The range of products* spans from static BMT and VDI tool holders, live tools up to highly complex customer-specific individual solutions. heimatec, headquartered in Renchen, has a own subsidiary in Asia and India and numerous representatives as well as trading partners all over the world.

*OUR PRODCUTS

Static tool holders

Live tool units

Precision tools

Tools for turning and machining centres

Tools for swiss type lathes

Tool changing and uick-change systems

Tool systems for gear production

Digital tool management

This catalogue, including all its parts, is protected by copyright. Any use outside the restricted limitations of the Copyright Act without the consent of heimatec is inadmissible and liable to prosecution. This applies in particular to duplication, translation, microfilming and storage and processing in electronic systems.

heimatec GmbH reserves the right to make technical changes at any time without giving prior notice. This applies in particular to adjustments at any time to meet new or changed international standards, or in case of further developments of our products or manufacturing processes.

The current version of our General Terms and Conditions can be found on our website.

Part-#

Name

8 010 66 132**Axial drilling and milling head ER 32 AS UT**

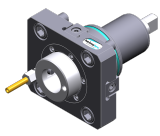
Weight [kg]:	3.340
Tool drive:	Flat (~DIN 1809)
Shank size [mm]:	65.00
Shank type:	BMT
Tool adaption:	ER 32 A - u-tec
Gear ratio [i]:	1:1
Torque max [Nm]:	50
Rotation max [1/min]:	6000
Rotating direction:	same
Coolant:	EXT
Please note:	short version

8 010 66 143**Axial drilling and milling head ER 32 AX UT IC**

Notation:	180° reversible
Tool drive:	Flat (~DIN 1809)
Shank size [mm]:	65.00
Shank type:	BMT
Tool adaption:	ER 32 A - u-tec
Gear ratio [i]:	1:1
Torque max [Nm]:	70
Rotation max [1/min]:	12000
Rotating direction:	same
Coolant:	IC/Ext
Pressure max [bar]:	100
Please note:	Dryrun possible

8 010 66 145**Axial drilling and milling head ER 32 AX UT**

Weight [kg]:	4.960
Notation:	180° reversible
Tool drive:	Flat (~DIN 1809)
Shank size [mm]:	65.00
Shank type:	BMT
Tool adaption:	ER 32 A - u-tec
Gear ratio [i]:	1:1
Torque max [Nm]:	70
Rotation max [1/min]:	12000
Rotating direction:	same
Coolant:	EXT
Pressure max [bar]:	140

8 010 67 025**Axial drilling and milling head HT 5**

Weight [kg]:	3.065
Tool drive:	Flat (~DIN 1809)
Shank size [mm]:	65.00
Shank type:	BMT
Tool adaption:	HT 5
Gear ratio [i]:	1:1
Torque max [Nm]:	50
Rotation max [1/min]:	6000
Rotating direction:	same
Coolant:	EXT

Part-#

Name

8 010 67 026**Axial drilling and milling head HT 5 IC**

Weight [kg]:	3.210
Tool drive:	Flat (~DIN 1809)
Shank size [mm]:	65.00
Shank type:	BMT
Tool adaption:	HT 5
Gear ratio [i]:	1:1
Torque max [Nm]:	50
Rotation max [1/min]:	6000
Rotating direction:	same
Coolant:	IC/Ext
Pressure max [bar]:	25

8 010 67 132**Axial drilling and milling head ER 40 AX UT**

Weight [kg]:	4.870
Tool drive:	Flat (~DIN 1809)
Shank size [mm]:	65.00
Shank type:	BMT
Tool adaption:	ER 40 A - u-tec
Gear ratio [i]:	1:1
Torque max [Nm]:	50
Rotation max [1/min]:	5000
Rotating direction:	same
Coolant:	EXT
Please note:	Combi bearing

8 013 64 008**Axial drilling and milling head ER 16 AX UT**

Weight [kg]:	4.050
Tool drive:	Flat (~DIN 1809)
Shank size [mm]:	65.00
Shank type:	BMT
Tool adaption:	ER 16 A - u-tec
Gear ratio [i]:	1:4
Torque max [Nm]:	5
Rotation max [1/min]:	24000
Rotating direction:	same
Coolant:	EXT

8 013 64 009**Axial drilling and milling head ER 16 AX UT IC**

Tool drive:	Flat (~DIN 1809)
Shank size [mm]:	65.00
Shank type:	BMT
Tool adaption:	ER 16 A - u-tec
Gear ratio [i]:	1:4
Torque max [Nm]:	5
Rotation max [1/min]:	24000
Rotating direction:	same
Coolant:	IC/Ext
Pressure max [bar]:	100

Part-#

Name

8 019 61 000**Axial drilling and milling head CHC**

Weight [kg]:	10.690
Notation:	180° reversible, IC-300
Version:	no Splash-protection
Tool drive:	Flat (~DIN 1809)
Shank size [mm]:	65.00
Shank type:	BMT
Tool adaption:	CHC
Gear ratio [i]:	1:0,75
Rotation max [1/min]:	4500
Rotating direction:	opposite
Coolant:	no
Center distance [mm]:	100
Offset [mm]:	174,9

8 019 65 019**Axial drilling and milling head ER 25 AX UT IC**

Weight [kg]:	7.790
Notation:	offset; 180° reversible
Tool drive:	Flat (~DIN 1809)
Shank size [mm]:	65.00
Shank type:	BMT
Tool adaption:	ER 25 A - u-tec
Gear ratio [i]:	1:1
Torque max [Nm]:	50
Rotation max [1/min]:	6000
Rotating direction:	opposite
Coolant:	IC/Ext
Pressure max [bar]:	140
Please note:	stronger bearing
Offset [mm]:	50

8 019 65 025**Axial drilling and milling head ER 25 AX UT**

Weight [kg]:	6.500
Notation:	offset; 180° reversible
Tool drive:	Flat (~DIN 1809)
Shank size [mm]:	65.00
Shank type:	BMT
Tool adaption:	ER 25 A - u-tec
Gear ratio [i]:	1:3
Torque max [Nm]:	12
Rotation max [1/min]:	15000
Rotating direction:	opposite
Coolant:	EXT
Please note:	stronger bearing
Offset [mm]:	50

8 019 65 027**Axial drilling and milling head ER 25 AX UT IC**

Weight [kg]:	7.850
Notation:	offset; 180° reversible
Tool drive:	Flat (~DIN 1809)
Shank size [mm]:	65.00
Shank type:	BMT
Tool adaption:	ER 25 A - u-tec
Gear ratio [i]:	1:2
Torque max [Nm]:	40
Rotation max [1/min]:	12000

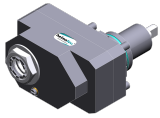
Part-#

Name

Rotating direction: opposite
 Coolant: IC/Ext
 Pressure max [bar]: 140
 Please note: stronger bearing
 Offset [mm]: 50

8 019 65 067**Axial drilling and milling head ER 25 AX UT**

Weight [kg]: 6.030
 Notation: offset; 180° reversible
 Tool drive: Flat (~DIN 1809)
 Shank size [mm]: 65.00
 Shank type: BMT
 Tool adaption: ER 25 A - u-tec
 Gear ratio [i]: 1:1
 Torque max [Nm]: 50
 Rotation max [1/min]: 6000
 Rotating direction: opposite
 Coolant: EXT
 Please note: stronger bearing
 Offset [mm]: 50

8 019 66 014**Axial drilling and milling head ER 32 AX UT IC**

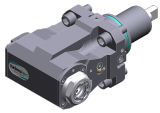
Weight [kg]: 10.740
 Notation: offset;
 Tool drive: Flat (~DIN 1809)
 Shank size [mm]: 65.00
 Shank type: BMT
 Tool adaption: ER 32 A - u-tec
 Gear ratio [i]: 1:1
 Torque max [Nm]: 100
 Rotation max [1/min]: 6000
 Rotating direction: opposite
 Coolant: IC/Ext
 Pressure max [bar]: 140
 Please note: stronger bearing
 Offset [mm]: 75

8 030 65 061**Radial drilling and milling head ER 25 AX UT**

Weight [kg]: 7.970
 Notation: 180° reversible
 Tool drive: Flat (~DIN 1809)
 Shank size [mm]: 65.00
 Shank type: BMT
 Tool adaption: ER 25 A - u-tec
 Gear ratio [i]: 1:2
 Torque max [Nm]: 16
 Rotation max [1/min]: 12000
 Rotating direction: same
 Coolant: EXT
 Please note: stronger bearing
 Center distance [mm]: 100

Part-#

Name

8 030 65 078**Radial drilling and milling head ER 25 AX UT IC**

Weight [kg]: 8.140
 Notation: 180° reversible
 Tool drive: Flat (~DIN 1809)
 Shank size [mm]: 65.00
 Shank type: BMT
 Tool adaption: ER 25 A - u-tec
 Gear ratio [i]: 1:2
 Torque max [Nm]: 16
 Rotation max [1/min]: 12000
 Rotating direction: same
 Coolant: IC/Ext
 Pressure max [bar]: 140
 Please note: stronger bearing
 Center distance [mm]: 100

8 030 66 169**Radial drilling and milling head ER 32 AS UT IC**

Weight [kg]: 10.550
 Notation: 180° reversible
 Tool drive: Flat (~DIN 1809)
 Shank size [mm]: 65.00
 Shank type: BMT
 Tool adaption: ER 32 A - u-tec
 Gear ratio [i]: 2:1
 Torque max [Nm]: 80
 Rotation max [1/min]: 3000
 Rotating direction: opposite
 Coolant: IC/Ext
 Pressure max [bar]: 140
 Please note: Rotating direction note; combi bearing
 Center distance [mm]: 100

8 030 66 176**Radial drilling and milling head ER 32 AX UT**

Weight [kg]: 13.700
 Notation: 180° reversible
 Employment for: Sub spindle
 Tool drive: Flat (~DIN 1809)
 Shank size [mm]: 65.00
 Shank type: BMT
 Tool adaption: ER 32 A - u-tec
 Gear ratio [i]: 1:1
 Torque max [Nm]: 70
 Rotation max [1/min]: 6000
 Rotating direction: same
 Coolant: EXT
 Please note: stronger bearing
 Center distance [mm]: 150

8 030 66 177**Radial drilling and milling head ER 32 AS UT IC**

Notation: 180° reversible
 Employment for: Sub spindle
 Tool drive: Flat (~DIN 1809)
 Shank size [mm]: 65.00
 Shank type: BMT
 Tool adaption: ER 32 A - u-tec
 Gear ratio [i]: 1:1

Part-#

Name

Torque max [Nm]: 70
 Rotation max [1/min]: 6000
 Rotating direction: same
 Coolant: IC/Ext
 Pressure max [bar]: 140
 Please note: stronger bearing
 Center distance [mm]: 150

8 030 66 218 Radial drilling and milling head ER 32 AS UT IC


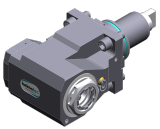

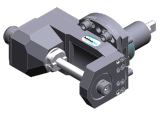
Notation: 180° reversible
 Tool drive: Flat (~DIN 1809)
 Shank size [mm]: 65.00
 Shank type: BMT
 Tool adaption: ER 32 A - u-tec
 Gear ratio [i]: 2:1
 Torque max [Nm]: 80
 Rotation max [1/min]: 3000
 Rotating direction: opposite
 Coolant: IC/Ext
 Pressure max [bar]: 140
 Please note: Rotating direction note; combi bearing
 Center distance [mm]: 100

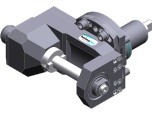

8 030 66 260 Radial drilling and milling head ER 32 AS UT

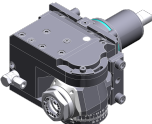
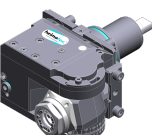
Weight [kg]: 9.260
 Notation: 180° reversible
 Tool drive: Flat (~DIN 1809)
 Shank size [mm]: 65.00
 Shank type: BMT
 Tool adaption: ER 32 A - u-tec
 Gear ratio [i]: 1:1
 Torque max [Nm]: 70
 Rotation max [1/min]: 10000
 Rotating direction: same
 Coolant: EXT
 Center distance [mm]: 100

8 030 66 261 Radial drilling and milling head ER 32 AS UT IC

Weight [kg]: 9.440
 Notation: 180° reversible
 Tool drive: Flat (~DIN 1809)
 Shank size [mm]: 65.00
 Shank type: BMT
 Tool adaption: ER 32 A - u-tec
 Gear ratio [i]: 1:1
 Torque max [Nm]: 70
 Rotation max [1/min]: 10000
 Rotating direction: same
 Coolant: IC/Ext
 Pressure max [bar]: 140
 Center distance [mm]: 100

Part-#	Name	
8 030 66 269	Radial drilling and milling head ER 32 AX UT	
	Notation:	180° reversible
	Tool drive:	Flat (~DIN 1809)
	Shank size [mm]:	65.00
	Shank type:	BMT
	Tool adaption:	ER 32 A - u-tec
	Gear ratio [i]:	1:1
	Torque max [Nm]:	70
	Rotation max [1/min]:	10000
	Rotating direction:	same
	Coolant:	EXT
	Center distance [mm]:	100
8 030 66 270	Radial drilling and milling head ER 32 AX UT IC	
	Weight [kg]:	9.980
	Notation:	180° reversible
	Tool drive:	Flat (~DIN 1809)
	Shank size [mm]:	65.00
	Shank type:	BMT
	Tool adaption:	ER 32 A - u-tec
	Gear ratio [i]:	1:1
	Torque max [Nm]:	70
	Rotation max [1/min]:	10000
	Rotating direction:	same
	Coolant:	IC/Ext
	Pressure max [bar]:	140
	Center distance [mm]:	100
8 030 67 165	Radial drilling and milling head ER 40 AX UT	
	Weight [kg]:	10.540
	Notation:	180° reversible
	Tool drive:	Flat (~DIN 1809)
	Shank size [mm]:	65.00
	Shank type:	BMT
	Tool adaption:	ER 40 u-tec
	Gear ratio [i]:	1:1
	Torque max [Nm]:	50
	Rotation max [1/min]:	6000
	Rotating direction:	same
	Coolant:	EXT
	Please note:	Combi bearing
	Center distance [mm]:	100
8 037 64 039	Radial disk mill head arbor 16	
	Weight [kg]:	11.860
	Tool drive:	Flat (~DIN 1809)
	Shank size [mm]:	65.00
	Shank type:	BMT
	Tool adaption:	Arbor 16
	Gear ratio [i]:	2:1
	Torque max [Nm]:	63
	Rotation max [1/min]:	3000
	Rotating direction:	same
	Coolant:	no
	Please note:	strong version; stronger bearing; use
	Center distance [mm]:	87,5

Part-#	Name	
8 037 64 040	Radial disk mill head arbor 16	
	Weight [kg]:	11.610
	Tool drive:	Flat (~DIN 1809)
	Shank size [mm]:	65.00
	Shank type:	BMT
	Tool adaption:	Arbor 16
	Gear ratio [i]:	2:1
	Torque max [Nm]:	63
	Rotation max [1/min]:	3000
	Rotating direction:	same
	Coolant:	EXT
	Please note:	strong version; stronger bearing; use
	Center distance [mm]:	87,5
8 037 65 008	Radial disk mill head arbor 22	
	Weight [kg]:	12.060
	Tool drive:	Flat (~DIN 1809)
	Shank size [mm]:	65.00
	Shank type:	BMT
	Tool adaption:	Arbor 22
	Gear ratio [i]:	2:1
	Torque max [Nm]:	63
	Rotation max [1/min]:	3000
	Rotating direction:	same
	Coolant:	no
	Please note:	strong version; stronger bearing; use
	Center distance [mm]:	87,5
8 039 66 021	Radial drilling and milling head ER 32 AX UT	
	Notation:	180° reversible
	Employment for:	Main- and sub spindle
	Version:	double spindle
	Tool drive:	Flat (~DIN 1809)
	Shank size [mm]:	65.00
	Shank type:	BMT
	Tool adaption:	ER 32 A - u-tec
	Gear ratio [i]:	1:1
	Torque max [Nm]:	70
	Rotation max [1/min]:	10000
	Rotating direction:	same/opposite
	Coolant:	EXT
	Please note:	stronger bearing
	Center distance [mm]:	100
8 039 66 041	Radial drilling and milling head ER 32 AS UT	
	Notation:	180° reversible
	Employment for:	Main- and sub spindle
	Version:	double spindle
	Tool drive:	Flat (~DIN 1809)
	Shank size [mm]:	65.00
	Shank type:	BMT
	Tool adaption:	ER 32 A - u-tec
	Gear ratio [i]:	1:1
	Torque max [Nm]:	50
	Rotation max [1/min]:	6000
	Rotating direction:	same/opposite

Part-#	Name	
	Coolant:	EXT
	Please note:	stronger bearing
	Center distance [mm]:	150
8 039 67 014	Radial drilling and milling head HT 5	
	Notation:	180° reversible
	Employment for:	Main- and sub spindle
	Version:	double spindle
	Tool drive:	Flat (~DIN 1809)
	Shank size [mm]:	65.00
	Shank type:	BMT
	Tool adaption:	HT 5
	Gear ratio [i]:	1:1
	Torque max [Nm]:	50
	Rotation max [1/min]:	6000
	Rotating direction:	same/opposite
	Coolant:	EXT
	Please note:	stronger bearing
	Center distance [mm]:	150
8 043 65 000	Universal head +135°/-30° adj. ER25 AX UT	
	Weight [kg]:	10.800
	Notation:	offset; 180° reversible
	Tool drive:	Flat (~DIN 1809)
	Shank size [mm]:	65.00
	Shank type:	BMT
	Tool adaption:	ER 25 A - u-tec
	Gear ratio [i]:	1:1
	Torque max [Nm]:	25
	Rotation max [1/min]:	6000
	Rotating direction:	same
	Coolant:	EXT
	Please note:	stronger bearing; note tool length!
	Center distance [mm]:	69
	Offset [mm]:	60
8 043 65 004	Universal head +135°/-30° adj. ER25AX UTIK	
	Weight [kg]:	10.080
	Notation:	offset; 180° reversible
	Tool drive:	Flat (~DIN 1809)
	Shank size [mm]:	65.00
	Shank type:	BMT
	Tool adaption:	ER 25 A - u-tec
	Gear ratio [i]:	1:1
	Torque max [Nm]:	25
	Rotation max [1/min]:	6000
	Rotating direction:	same
	Coolant:	IC/Ext
	Pressure max [bar]:	140
	Please note:	stronger bearing
	Center distance [mm]:	69
	Offset [mm]:	60

Part-#	Name	
8 050 65 011	Multispindle drilling head ER 25 AX UT	
	Weight [kg]:	6.700
	Version:	2-spindles
	Tool drive:	Flat (~DIN 1809)
	Shank size [mm]:	65.00
	Shank type:	BMT
	Tool adaption:	ER 25 A - u-tec
	Gear ratio [i]:	1:1
	Torque max [Nm]:	32/Sp.
	Rotation max [1/min]:	6000
	Rotating direction:	opposite
	Coolant:	EXT
	Please note:	stronger bearing
8 050 65 012	Multispindle drilling head ER 25 AX UT IC	
	Weight [kg]:	6.740
	Tool drive:	Flat (~DIN 1809)
	Shank size [mm]:	65.00
	Shank type:	BMT
	Tool adaption:	ER 25 A - u-tec
	Gear ratio [i]:	1:1
	Torque max [Nm]:	32/Sp.
	Rotation max [1/min]:	6000
	Rotating direction:	opposite
	Coolant:	IC/Ext
	Pressure max [bar]:	25
	Please note:	stronger bearing
8 100 16 000	Tool holder radial ø17,1 / minus	
	Notation:	180° reversible
	Employment for:	Angle handpiece or extension CN01
	Tool drive:	Flat (~DIN 1809)
	Shank size [mm]:	65.00
	Shank type:	BMT
	Tool adaption:	Interface ø17,1 / M17x1
	Gear ratio [i]:	1:1
	Rotation max [1/min]:	6000
	Rotating direction:	opposite
	Coolant:	no
	Center distance [mm]:	100
8 200 62 006	Cover plate 96,0x100,0x 10,0	
	Weight [kg]:	1.340
	Shank size [mm]:	65.00
	Shank type:	BMT
8 202 10 009	Basic holder longitudinal seat FN 12	
	Weight [kg]:	1.490
	Notation:	180° reversible
	Shank type:	BMT
	Machine adaption:	Centering key b 18
	Tool adaption:	Interface FN 12
	Coolant:	EXT

Part-#	Name	
8 209 14 006	Adapter for VDI 40	
	Weight [kg]:	7.650
	Notation:	180° reversible
	Employment for:	Main- and sub spindle
	Shank type:	BMT
	Machine adaption:	Centering key b 18
	Tool adaption:	DIN 69880 - 40
	Coolant:	EXT
	Center distance [mm]:	100
8 224 12 014	Cut-off holder sq. 25	
	Weight [kg]:	2.320
8 224 13 015	Cut-off holder SH 32	
	Weight [kg]:	1.870
	Employment for:	Cut-off tool 32
	Version:	Clampshaft on turret side
	Shank type:	BMT
	Machine adaption:	Centering key b 18
	Tool adaption:	Clampshaft SH 32
	Coolant:	EXT
8 224 14 026	Universal turning holder sq. 20 IC	
	Weight [kg]:	3.795
	Shank type:	BMT
	Machine adaption:	Centering key b 18
	Tool adaption:	Sq. 20
		Sq. 20
	Coolant:	IC/Ext
	Pressure max [bar]:	100
	Please note:	Key rail
8 224 14 027	Universal turning holder sq. 20 IC	
	Weight [kg]:	4.600
	Notation:	180° reversible
	Shank type:	BMT
	Machine adaption:	Centering key b 18
	Tool adaption:	Sq. 20
		Sq. 20
	Coolant:	IC/Ext
	Pressure max [bar]:	100
	Please note:	Key rail
8 224 15 005	Universal turning holder sq. 25	
	Weight [kg]:	3.960
	Machine adaption:	Centering key b 18
	Tool adaption:	Sq. 25
	Coolant:	EXT
	Pressure max [bar]:	80

Part-#	Name	
8 224 15 006	Universal turning holder sq. 25	
	Weight [kg]:	4.590
	Notation:	180° reversible
	Machine adaption:	Centering key b 18
	Tool adaption:	Sq. 25
		Sq. 25
	Coolant:	EXT
	Pressure max [bar]:	80
8 224 15 015	Universal turning holder sq. 1"	
	Weight [kg]:	3.930
	Machine adaption:	Centering key b 18
	Tool adaption:	Sq. 1" (25,4mm)
	Coolant:	EXT
8 224 15 016	Universal turning holder sq. 1"	
	Weight [kg]:	4.580
	Shank type:	BMT
	Machine adaption:	Centering key b 18
	Tool adaption:	Sq. 1" (25,4mm)
		Sq. 1" (25,4mm)
	Coolant:	EXT
8 224 15 052	Universal turning holder sq. 25 IC	
	Shank type:	BMT
	Machine adaption:	Centering key b 18
	Tool adaption:	Sq. 25
		Sq. 25
	Coolant:	IC/Ext
	Pressure max [bar]:	100
	Please note:	Key rail
8 224 15 053	Universal turning holder sq. 25 IC	
	Weight [kg]:	4.690
	Notation:	180° reversible
	Shank type:	BMT
	Machine adaption:	Centering key b 18
	Tool adaption:	Sq. 25
		Sq. 25
	Coolant:	IC/Ext
	Pressure max [bar]:	100
	Please note:	Key rail
8 224 15 056	Universal turning holder sq. 1" IC	
	Notation:	180° reversible
	Shank type:	BMT
	Machine adaption:	Centering key b 18
	Tool adaption:	Sq. 1" (25,4mm)
		Sq. 1" (25,4mm)
	Coolant:	IC/Ext
	Pressure max [bar]:	100
	Please note:	Key rail

SPINNER




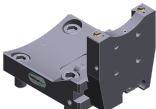


TTS 125 /-XL - BMT 65

Part-#	Name	
8 229 16 012	Tool holder C 4 IC	
	Weight [kg]:	3.300
	Notation:	180° reversible
	Version:	right
	Shank type:	BMT
	Machine adaption:	Centering key b 18
	Tool adaption:	heimatec Capto(TM) C 4
	Coolant:	IC
	Please note:	Check applicability; note tool length!
	Offset [mm]:	31
8 240 15 026	Tool holder ABS 50 IC/Ext	
	Weight [kg]:	7.800
	Notation:	180° reversible
	Employment for:	Main- and sub spindle
	Shank type:	BMT
	Machine adaption:	Centering key b 18
	Tool adaption:	ABS 50
	Coolant:	IC/Ext
	Center distance [mm]:	100
8 240 16 026	Collet chuck holder ER 32	
	Weight [kg]:	6.820
	Notation:	180° reversible
	Shank type:	BMT
	Machine adaption:	Centering key b 18
	Tool adaption:	ER 32
	Coolant:	IC/Ext
	Please note:	Insert reversible
	Center distance [mm]:	100
8 240 17 050	Boring bar holder Ø 25	
	Weight [kg]:	10.730
	Notation:	180° reversible
	Employment for:	Main- and sub spindle
	Shank type:	BMT
	Machine adaption:	Centering key b 18
	Tool adaption:	Ø 25
	Coolant:	IC/Ext
	Pressure max [bar]:	80
	Center distance [mm]:	100
8 240 17 063	Boring bar holder Ø 1 1/4"	
	Weight [kg]:	10.500
	Notation:	180° reversible
	Employment for:	Main- and sub spindle
	Shank type:	BMT
	Machine adaption:	Centering key b 18
	Tool adaption:	Ø 1 1/4" (31,75mm)
	Coolant:	IC/Ext
	Center distance [mm]:	100

Part-#	Name	
8 240 18 049	Boring bar holder Ø 32	
	Weight [kg]:	10.480
	Notation:	180° reversible
	Employment for:	Main- and sub spindle
	Shank type:	BMT
	Machine adaption:	Centering key b 18
	Tool adaption:	Ø 32
	Coolant:	IC/Ext
	Pressure max [bar]:	80
	Center distance [mm]:	100
8 240 18 091	Boring bar holder Ø 1 1/2"	
	Weight [kg]:	10.110
	Notation:	180° reversible
	Shank type:	BMT
	Machine adaption:	Centering key b 18
	Tool adaption:	Ø 1 1/2" (38,1mm)
	Coolant:	IC/Ext
	Center distance [mm]:	100
8 240 19 043	Boring bar holder Ø 40	
	Weight [kg]:	10.050
	Notation:	180° reversible
	Employment for:	Main- and sub spindle
	Shank type:	BMT
	Machine adaption:	Centering key b 18
	Tool adaption:	Ø 40
	Coolant:	IC/Ext
	Pressure max [bar]:	80
	Center distance [mm]:	100
8 240 19 051	Boring bar holder Ø 50	
	Weight [kg]:	9.340
	Notation:	180° reversible
	Employment for:	Main- and sub spindle
	Shank type:	BMT
	Machine adaption:	Centering key b 18
	Tool adaption:	Ø 50
	Coolant:	IC/Ext
	Pressure max [bar]:	80
	Center distance [mm]:	100
8 240 19 070	Boring bar holder Ø 50	
	Weight [kg]:	11.220
	Notation:	180° reversible
	Employment for:	Main- and sub spindle
	Version:	Special
	Shank type:	BMT
	Machine adaption:	Centering key b 18
	Tool adaption:	Ø 50
	Coolant:	IC/Ext
	Center distance [mm]:	115

Part-#	Name	
8 249 16 005 	Double collet chuck holder ER 32 Weight [kg]: Notation: Employment for: Shank type: Machine adaption: Tool adaption: Coolant: Center distance [mm]:	8.560 180° reversible Main- and sub spindle BMT Centering key b 18 ER 32 IC/Ext 100
8 249 19 005 	Boring bar holder Ø 40 Weight [kg]: Notation: Employment for: Shank type: Machine adaption: Tool adaption: Coolant: Center distance [mm]:	15.010 180° reversible Main- and sub spindle BMT Centering key b 18 Ø 40 IC/Ext 150
8 251 14 019 	Combi multiple holder 3x sq. 20 Weight [kg]: Employment for: Shank type: Machine adaption: Tool adaption: Coolant:	4.890 Main spindle BMT Centering key b 18 Sq. 20 Sq. 20 EXT
8 251 15 003 	Combi double turning holder sq. 25 Notation: Shank type: Machine adaption: Tool adaption: Coolant: Pressure max [bar]:	180° reversible BMT Centering key b 18 Sq. 25 Sq. 25 Sq. 25 Sq. 25 EXT 80
8 251 15 008 	Combi double turning holder sq. 1" Weight [kg]: Shank type: Machine adaption: Tool adaption: Coolant:	6.590 BMT Centering key b 18 Sq. 1" (25,4mm) EXT
8 251 15 046 	Combi double turning holder sq. 25 IC Weight [kg]: Notation: Shank type: Machine adaption: Tool adaption:	6.520 180° reversible BMT Centering key b 18 Sq. 25 Sq. 25

Part-#	Name	
		Sq. 25 Sq. 25 IC/Ext 100 Key rail
	Coolant: Pressure max [bar]: Please note:	
8 253 18 023	Multiple boring bar holder Ø 32	
	Notation: Employment for: Shank type: Machine adaption: Tool adaption:	180° reversible Main- and sub spindle BMT Centering key b 18 Ø 32 Ø 32
	Coolant: Pressure max [bar]: Center distance [mm]:	IC/Ext 140 100/150
8 259 12 007	Multiple turning holder sq. 25/1"	
	Weight [kg]: Employment for: Version: Shank type: Machine adaption: Tool adaption:	8.790 Main- and sub spindle Y-axes offset BMT Centering key b 18 Sq. 25/1" (25,4mm) Sq. 25/1" (25,4mm) Sq. 25/1" (25,4mm) Sq. 25/1" (25,4mm)
	Coolant:	EXT
8 259 12 008	Multiple turning holder sq. 25/1"	
	Weight [kg]: Notation: Version: Shank type: Machine adaption: Tool adaption:	5.000 180° reversible Y-axes offset BMT Centering key b 18 Sq. 25/1" (25,4 mm) Sq. 25/1" (25,4 mm)
	Coolant:	EXT
8 259 18 000	Multiple boring bar holder, double Ø 32	
	Employment for: Shank type: Machine adaption: Tool adaption:	Main- and sub spindle BMT Centering key b 18 Ø 32 Ø 32 Ø 32 Ø 32
	Coolant: Pressure max [bar]: Center distance [mm]:	IC/Ext 140 100/150

Part-#	Name	
8 320 12 017	Cut-off holder, height adjustable SH 26 IC	
	Weight [kg]:	1.980
	Notation:	180° reversible
	Shank type:	BMT
	Machine adaption:	Centering key b 18
	Tool adaption:	Clampshaft SH 26
	Coolant:	IC/Ext
	Pressure max [bar]:	70
8 320 13 005	Cut-off holder, height adjustable SH 32 IC	
	Weight [kg]:	2.120
	Notation:	180° reversible
	Shank type:	BMT
	Machine adaption:	Centering key b 18
	Tool adaption:	Clampshaft SH 32
	Coolant:	IC/Ext
	Pressure max [bar]:	70
8 320 13 019	Cut-off holder, height adjustable SH 32 IC	
	Notation:	180° reversible
	Shank type:	BMT
	Machine adaption:	Centering key b 18
	Tool adaption:	Clampshaft SH 32
	Coolant:	IC/Ext
	Pressure max [bar]:	70
	Please note:	with offset cut-off tool holder; use
8 320 13 020	Cut-off holder, height adjustable SH 32 IC	
	Weight [kg]:	2.240
	Notation:	180° reversible
	Shank type:	BMT
	Machine adaption:	Centering key b 18
	Tool adaption:	Clampshaft SH 32
	Coolant:	IC/Ext
	Pressure max [bar]:	70
	Please note:	Clampshaft internal
8 320 19 020	Cut-off holder, height adjustable 845 IC	
	Notation:	180° reversible
	Shank type:	BMT
	Machine adaption:	Centering key b 18
	Tool adaption:	 System 845
	Coolant:	IC
	Pressure max [bar]:	70
	Please note:	Clampshaft internal



● heimatec overseas branches

○ global representations of heimatec

heimatec[®]

heimatec GmbH
Präzisionswerkzeuge
Carl-Benz-Str. 4
77871 Renchen
Germany

T +49 7843 9466 0
www.heimatec.com
info@heimatec.com

Please find the contact details of our worldwide trading partners on our website:
<https://heimatec.com/business-partners>