

TOPSELLER -
many more available!

Live Tools

heimatec®

SPINNER

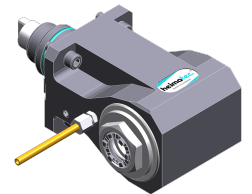
TTS 85 /-XL - BMT 45

Part-#	Tool adaption	Rotation max [1/min]	Gear ratio	Coolant	Pressure max.	Center distance
Axial drilling and milling head						
8 010 45 135	ER 25 A - u-tec	15.000	1:1	EXT	--	--
Radial drilling and milling head						
8 030 45 612	ER 25 A - u-tec	10.000	1:1	EXT	--	100 mm
8 030 45 613	ER 25 A - u-tec	10.000	1:1	IC/Ext	140 bar	100 mm
Radial drilling and milling head, double spindle						
8 039 45 156	ER 25 A - u-tec	12.000	1:1	EXT	--	100 mm

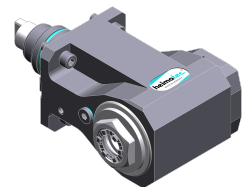
Illustrations similar.



8 010 45 135



8 030 45 612



8 030 45 613

TOPSELLER -
many more available!

Static Tools

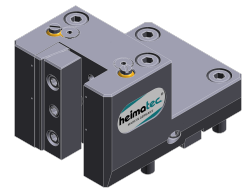
heimatec®

SPINNER

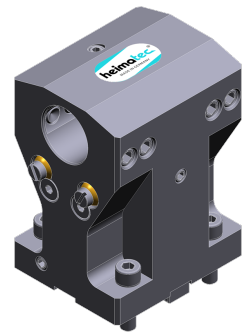
TTS 85 /-XL - BMT 45

Part-#	Tool adaption	Coolant	Pressure max.	Center distance
Universal turning holder				
8 224 04 061	Sq. 20	IC/Ext	100 bar	--
8 224 04 074	Sq. 20	IC/Ext	100 bar	--
8 224 05 030	Sq. 25	IC/Ext	100 bar	--
8 224 05 040	Sq. 25	IC/Ext	100 bar	--
Boring bar holder				
8 240 07 020	Ø 25	IC/Ext	--	100 mm
8 240 08 023	Ø 32	IC/Ext	--	100 mm
8 240 09 018	Ø 40	IC/Ext	--	100 mm
Double boring bar holder				
8 249 08 005	Ø 32	IC/Ext	100 bar	100 mm
Double turning holder				
8 251 04 016	Sq. 20	EXT	--	--
8 251 04 070	Sq. 20	IC/Ext	100 bar	--
8 251 05 015	Sq. 25	IC/Ext	100 bar	--
Multiple boring bar holder				
8 253 08 013	Ø 32	IC/Ext	100 bar	--
Multiple turning holder				
8 259 01 015	Sq. 20	EXT	--	--
8 259 01 016	Sq. 20	IC/Ext	100 bar	--
Multiple boring bar holder, double				
8 259 07 008	Ø 25	IC/Ext	100 bar	--
8 259 08 001	Ø 32	IC/Ext	140 bar	--

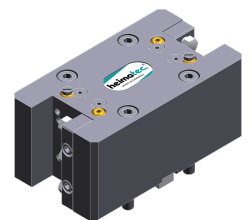
Illustrations similar.



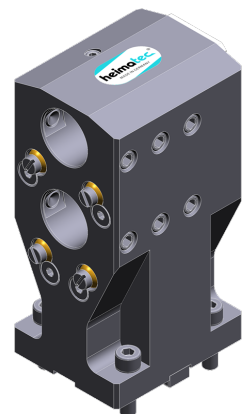
8 224 04 061



8 249 08 005



8 251 04 016



8 253 08 013

TOPSELLER -
many more available!

Static Tools

heimatec®

SPINNER

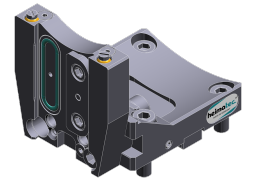
TTS 85 /-XL - BMT 45

Part-#	Tool adaption	Coolant	Pressure max.	Center distance
--------	---------------	---------	---------------	-----------------

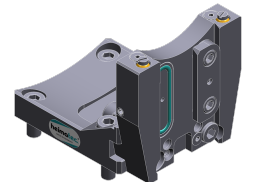
Cut-off holder, height adjustable

8 320 02 012	Clampshaft SH 26	IC/Ext	70 bar	--
8 320 03 011	Clampshaft SH 32	IC/Ext	70 bar	--

Illustrations similar.



8 320 02 012



8 320 03 011