

TOPSELLER -
many more available!

Live Tools

heimatec®

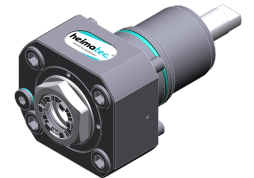
CMZ TX 66 Y3

| Part-# | Tool adaption | Rotation max [1/min] | Gear ratio | Coolant | Pressure max. | Center distance |
|---|------------------------|----------------------|------------|---------|---------------|-----------------|
| Axial drilling and milling head | | | | | | |
| 8 010 55 127 | ER 25 A - u-tec | 12.000 | 1:1 | EXT | -- | -- |
| 8 010 55 128 | ER 25 A - u-tec | 15.000 | 1:1 | IC/Ext | 100 bar | -- |
| 8 010 56 162 | ER 32 A - u-tec | 12.000 | 1:1 | EXT | -- | -- |
| 8 010 56 163 | ER 32 A - u-tec | 15.000 | 1:1 | IC/Ext | 100 bar | -- |
| Radial drilling and milling head | | | | | | |
| 8 030 55 266 | ER 25 A - u-tec | 6.000 | 1:1 | EXT | -- | 65 mm |
| 8 030 55 265 | ER 32 A - u-tec | 6.000 | 1:1 | IC/Ext | 140 bar | 65 mm |
| 8 030 56 281 | ER 32 A - u-tec | 6.000 | 1:1 | EXT | -- | 65 mm |
| 8 030 56 282 | ER 32 A - u-tec | 6.000 | 1:1 | IC/Ext | 140 bar | 65 mm |
| 8 030 56 283 | ER 32 A - u-tec | 12.000 | 1:1 | EXT | -- | 65 mm |
| 8 030 56 284 | ER 32 A - u-tec | 12.000 | 1:1 | IC/Ext | 140 bar | 65 mm |
| Radial drilling and milling head, double spindle | | | | | | |
| 8 039 55 241 | ER 25 A - u-tec | 12.000 | 1:1 | EXT | -- | 65 mm |
| 8 039 56 069 | ER 32 A - u-tec | 12.000 | 1:1 | EXT | -- | 65 mm |
| Universal head, offset | | | | | | |
| 8 043 54 000 | ER 16 A - u-tec | 6.000 | 1:1 | EXT | -- | 69 mm |
| 8 043 54 001 | ER 16 A - u-tec | 6.000 | 1:1 | IC/Ext | 140 bar | 69 mm |

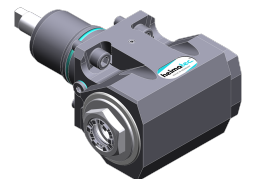
Illustrations similar.



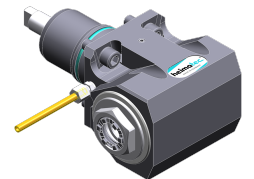
8 010 55 127



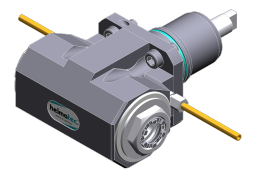
8 010 55 128



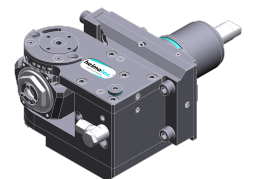
8 030 55 266



8 030 55 265



8 039 55 241



8 043 54 000

TOPSELLER -
many more available!

Static Tools

heimatec®

CMZ TX 66 Y3

| Part-# | Tool adaption | Coolant | Pressure max. | Center distance |
|--|-------------------------|---------|---------------|-----------------|
| Cut-off holder | | | | |
| 8 224 13 007 | Clampshaft SH 32 | EXT | -- | -- |
| Universal turning holder | | | | |
| 8 224 14 016 | Sq. 20 | IC/Ext | 100 bar | -- |
| 8 224 15 002 | Sq. 25 | EXT | -- | -- |
| 8 224 15 062 | Sq. 25 | IC/Ext | 100 bar | -- |
| Boring bar holder | | | | |
| 8 240 17 005 | Ø 25 | IC/Ext | -- | 75 mm |
| 8 240 18 010 | Ø 32 | IC/Ext | 140 bar | 75 mm |
| Double turning holder | | | | |
| 8 251 11 003 | Sq. 20 | EXT | -- | -- |
| 8 251 14 100 | Sq. 20 | IC/Ext | 100 bar | -- |
| 8 251 12 006 | Sq. 25 | EXT | -- | -- |
| 8 251 15 048 | Sq. 25 | IC/Ext | 100 bar | -- |
| Combi multiple holder | | | | |
| 8 251 14 006 | Sq. 20 | EXT | -- | -- |
| 8 251 14 074 | Sq. 20 | IC/Ext | 100 bar | -- |
| Cut-off holder, height adjustable | | | | |
| 8 320 12 010 | Clampshaft SH 26 | IC/Ext | 70 bar | -- |
| 8 320 13 002 | Clampshaft SH 32 | IC/Ext | 70 bar | -- |

Illustrations similar.



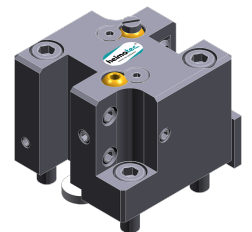
8 224 13 007



8 224 14 016



8 240 17 005



8 251 11 003