

Daewoo

# Puma 230 MB



# High-tech from heimatec - heimatec - Tools and systems for productive turning and milling

heimatec belongs to the international technology and quality leaders for precision tools and specializes in the development and production of high-precision static and live tools for all CNC lathes, CNC turn-/mill machines and CNC machining centers.

The range of products\* spans from static BMT and VDI tool holders, live tools up to highly complex customer-specific individual solutions. heimatec, headquartered in Renchen, has a own subsidiary in Asia and India and numerous representatives as well as trading partners all over the world.

## \*OUR PRODCUTS

Static tool holders

Live tool units

Precision tools

Tools for turning and machining centres

Tools for swiss type lathes

Tool changing and uick-change systems

Tool systems for gear production

Digital tool management

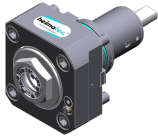
This catalogue, including all its parts, is protected by copyright. Any use outside the restricted limitations of the Copyright Act without the consent of heimatec is inadmissible and liable to prosecution. This applies in particular to duplication, translation, microfilming and storage and processing in electronic systems.

**heimatec GmbH** reserves the right to make technical changes at any time without giving prior notice. This applies in particular to adjustments at any time to meet new or changed international standards, or in case of further developments of our products or manufacturing processes.

The current version of our General Terms and Conditions can be found on our website.

| Part-# | Name |
|--------|------|
|--------|------|

8 010 55 038



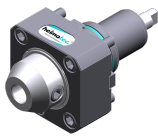
**Axial drilling and milling head ER 25 AX UT IC**  
 Weight [kg]: 3.050  
 Tool drive: Flat (~DIN 1809)  
 Shank size [mm]: 55.00  
 Shank type: BMT  
 Tool adaption: ER 25 A - u-tec  
 Gear ratio [i]: 1:1  
 Torque max [Nm]: 50  
 Rotation max [1/min]: 6000  
 Rotating direction: same  
 Coolant: IC/Ext  
 Pressure max [bar]: 25  
 Please note: Combi bearing

8 010 55 039



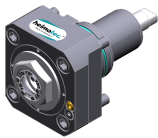
**Axial drilling and milling head ER 25 AX UT**  
 Notation: 180° reversible  
 Tool drive: Flat (~DIN 1809)  
 Shank size [mm]: 55.00  
 Shank type: BMT  
 Tool adaption: ER 25 A - u-tec  
 Gear ratio [i]: 1:1  
 Torque max [Nm]: 50  
 Rotation max [1/min]: 12000  
 Rotating direction: same  
 Coolant: EXT  
 Pressure max [bar]: 140

8 010 55 051



**Axial drilling and milling head Weldon 3/4"**  
 Weight [kg]: 3.390  
 Tool drive: Flat (~DIN 1809)  
 Shank size [mm]: 55.00  
 Shank type: BMT  
 Tool adaption: Weldon (DIN 1835 b) 3/4" (19,05mm)  
 Gear ratio [i]: 1:1  
 Torque max [Nm]: 50  
 Rotation max [1/min]: 6000  
 Rotating direction: same  
 Coolant: EXT  
 Please note: Combi bearing

8 010 55 120



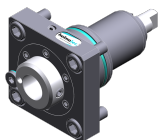
**Axial drilling and milling head ER 25 AX UT**  
 Weight [kg]: 3.190  
 Tool drive: Flat (~DIN 1809)  
 Shank size [mm]: 55.00  
 Shank type: BMT  
 Tool adaption: ER 25 A - u-tec  
 Gear ratio [i]: 1:1  
 Torque max [Nm]: 50  
 Rotation max [1/min]: 8000  
 Rotating direction: same  
 Coolant: EXT

Part-#

Name

**8 010 56 035**

**Axial drilling and milling head HT 4 IC**



Tool drive: Flat (~DIN 1809)  
Shank size [mm]: 55.00  
Shank type: BMT  
Tool adaption: HT 4  
Gear ratio [i]: 1:1  
Torque max [Nm]: 50  
Rotation max [1/min]: 6000  
Rotating direction: same  
Coolant: IC/Ext  
Pressure max [bar]: 25  
Please note: stronger bearing

**8 010 56 039**

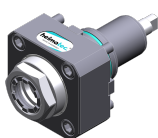
**Axial drilling and milling head ER 32 AX UT**



Weight [kg]: 3.200  
Tool drive: Flat (~DIN 1809)  
Shank size [mm]: 55.00  
Shank type: BMT  
Tool adaption: ER 32 A - u-tec  
Gear ratio [i]: 1:1  
Torque max [Nm]: 50  
Rotation max [1/min]: 6000  
Rotating direction: same  
Coolant: EXT  
Please note: Combi bearing

**8 010 56 040**

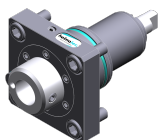
**Axial drilling and milling head ER 32 AX UT IC**



Weight [kg]: 3.220  
Tool drive: Flat (~DIN 1809)  
Shank size [mm]: 55.00  
Shank type: BMT  
Tool adaption: ER 32 A - u-tec  
Gear ratio [i]: 1:1  
Torque max [Nm]: 50  
Rotation max [1/min]: 6000  
Rotating direction: same  
Coolant: IC/Ext  
Pressure max [bar]: 25  
Please note: Combi bearing

**8 010 56 047**

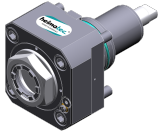
**Axial drilling and milling head HT 4 IC**



Tool drive: Flat (~DIN 1809)  
Shank size [mm]: 55.00  
Shank type: BMT  
Tool adaption: HT 4  
Gear ratio [i]: 1:1  
Torque max [Nm]: 50  
Rotation max [1/min]: 6000  
Rotating direction: same  
Coolant: IC/Ext  
Pressure max [bar]: 25  
Please note: Combi bearing

| Part-# | Name |
|--------|------|
|--------|------|

8 010 56 089



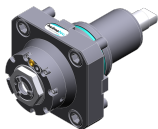
**Axial drilling and milling head ER 32 AX UT IC**  
 Weight [kg]: 3.700  
 Tool drive: Flat (~DIN 1809)  
 Shank size [mm]: 55.00  
 Shank type: BMT  
 Tool adaption: ER 32 A - u-tec  
 Gear ratio [i]: 1:1  
 Torque max [Nm]: 50  
 Rotation max [1/min]: 12000  
 Rotating direction: same  
 Coolant: IC/Ext  
 Pressure max [bar]: 100  
 Please note: Dryrun possible

8 010 56 119



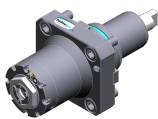
**Axial drilling and milling head C 4 IC**  
 Notation: 180° reversible  
 Tool drive: Flat (~DIN 1809)  
 Shank size [mm]: 55.00  
 Shank type: BMT  
 Tool adaption: heimatec Capto(TM) C 4  
 Gear ratio [i]: 1:1  
 Torque max [Nm]: 50  
 Rotation max [1/min]: 6000  
 Rotating direction: same  
 Coolant: IC/Ext  
 Pressure max [bar]: 100  
 Please note: Check applicability; tool length check !;

8 013 54 008








**Axial drilling and milling head ER 16 AX UT**  
 Weight [kg]: 2.480  
 Tool drive: Flat (~DIN 1809)  
 Shank size [mm]: 55.00  
 Shank type: BMT  
 Tool adaption: ER 16 A - u-tec  
 Gear ratio [i]: 1:4  
 Torque max [Nm]: 5  
 Rotation max [1/min]: 24000  
 Rotating direction: same  
 Coolant: EXT

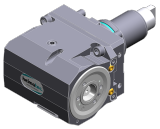
8 013 54 009



**Axial drilling and milling head ER 16 AX UT IC**  
 Tool drive: Flat (~DIN 1809)  
 Shank size [mm]: 55.00  
 Shank type: BMT  
 Tool adaption: ER 16 A - u-tec  
 Gear ratio [i]: 1:4  
 Torque max [Nm]: 5  
 Rotation max [1/min]: 24000  
 Rotating direction: same  
 Coolant: IC/Ext  
 Pressure max [bar]: 100

| Part-#  | Name   |                         |
|---|--|-------------------------|
| <b>8 019 55 050</b>   | <b>Axial drilling and milling head ER 25 AX UT</b> |                         |
|    | Weight [kg]:                                       | 5.000                   |
|   | Notation:  | offset; 180° reversible |
|   | Tool drive:  | Flat (~DIN 1809)        |
|   | Shank size [mm]:                                   | 55.00                   |
|   | Shank type:  | BMT                     |
|   | Tool adaption:                                     | ER 25 A - u-tec         |
|   | Gear ratio [i]:                                    | 1:1                     |
|   | Torque max [Nm]:                                   | 40                      |
|   | Rotation max [1/min]:                              | 8000                    |
|   | Rotating direction:                                | opposite                |
|   | Coolant:   | EXT                     |
|   | Please note:                                       | stronger bearing        |
|   | Offset [mm]:                                       | 42                      |
| <b>8 019 55 051</b>   | <b>Axial drilling and milling head ER 25 AX UT</b> |                         |
|    | Weight [kg]:                                       | 5.010                   |
|   | Notation:  | offset; 180° reversible |
|   | Tool drive:  | Flat (~DIN 1809)        |
|   | Shank size [mm]:                                   | 55.00                   |
|   | Shank type:  | BMT                     |
|   | Tool adaption:                                     | ER 25 A - u-tec         |
|   | Gear ratio [i]:                                    | 2:1                     |
|   | Torque max [Nm]:                                   | 50                      |
|   | Rotation max [1/min]:                              | 3000                    |
|   | Rotating direction:                                | opposite                |
|   | Coolant:   | EXT                     |
|   | Please note:                                       | stronger bearing        |
|   | Offset [mm]:                                       | 42                      |
| <b>8 019 55 052</b>   | <b>Axial drilling and milling head ER 25 AX UT</b> |                         |
|  | Weight [kg]:                                       | 5.020                   |
|   | Notation:  | offset; 180° reversible |
|   | Tool drive:  | Flat (~DIN 1809)        |
|   | Shank size [mm]:                                   | 55.00                   |
|   | Shank type:  | BMT                     |
|   | Tool adaption:                                     | ER 25 A - u-tec         |
|   | Gear ratio [i]:                                    | 1:3                     |
|   | Torque max [Nm]:                                   | 16                      |
|   | Rotation max [1/min]:                              | 18000                   |
|   | Rotating direction:                                | opposite                |
|   | Coolant:   | EXT                     |
|   | Please note:                                       | stronger bearing        |
|   | Offset [mm]:                                       | 42                      |
| <b>8 019 55 053</b>   | <b>Axial drilling and milling head ER 25 AX UT</b> |                         |
|  | Weight [kg]:                                       | 4.980                   |
|   | Notation:  | offset; 180° reversible |
|   | Tool drive:  | Flat (~DIN 1809)        |
|   | Shank size [mm]:                                   | 55.00                   |
|   | Shank type:  | BMT                     |
|   | Tool adaption:                                     | ER 25 A - u-tec         |
|   | Gear ratio [i]:                                    | 1:2                     |
|   | Torque max [Nm]:                                   | 25                      |
|   | Rotation max [1/min]:                              | 16000                   |
|   | Rotating direction:                                | opposite                |

| Part-#  | Name  |                         |
|---|---|-------------------------|
|   | Coolant:  | EXT                     |
|   | Please note:  | stronger bearing        |
|   | Offset [mm]:  | 42                      |
| <b>8 019 55 054</b>   | <b>Axial drilling and milling head ER 25 AX UT IC</b> |                         |
|    | Notation:   | offset; 180° reversible |
|   | Tool drive:   | Flat (~DIN 1809)        |
|   | Shank size [mm]:                                      | 55.00                   |
|   | Shank type:   | BMT                     |
|   | Tool adaption:  | ER 25 A - u-tec         |
|   | Gear ratio [i]:                                       | 1:1                     |
|   | Torque max [Nm]:                                      | 40                      |
|   | Rotation max [1/min]:                                 | 6000                    |
|   | Rotating direction:                                   | opposite                |
|   | Coolant:  | IC/Ext                  |
|   | Pressure max [bar]:                                   | 140                     |
|   | Please note:  | stronger bearing        |
|   | Offset [mm]:  | 42                      |
| <b>8 019 55 056</b>   | <b>Axial drilling and milling head ER 25 AX UT IC</b> |                         |
|   | Weight [kg]:  | 6.130                   |
|   | Notation:   | offset; 180° reversible |
|   | Tool drive:   | Flat (~DIN 1809)        |
|   | Shank size [mm]:                                      | 55.00                   |
|   | Shank type:   | BMT                     |
|   | Tool adaption:  | ER 25 A - u-tec         |
|   | Gear ratio [i]:                                       | 1:3                     |
|   | Torque max [Nm]:                                      | 16                      |
|   | Rotation max [1/min]:                                 | 18000                   |
|   | Rotating direction:                                   | opposite                |
|   | Coolant:  | IC/Ext                  |
|   | Pressure max [bar]:                                   | 140                     |
|   | Please note:  | stronger bearing        |
|   | Offset [mm]:  | 42                      |
| <b>8 019 55 057</b>   | <b>Axial drilling and milling head ER 25 AX UT IC</b> |                         |
|  | Weight [kg]:  | 6.060                   |
|   | Notation:   | offset; 180° reversible |
|   | Tool drive:   | Flat (~DIN 1809)        |
|   | Shank size [mm]:                                      | 55.00                   |
|   | Shank type:   | BMT                     |
|   | Tool adaption:  | ER 25 A - u-tec         |
|   | Gear ratio [i]:                                       | 1:2                     |
|   | Torque max [Nm]:                                      | 25                      |
|   | Rotation max [1/min]:                                 | 16000                   |
|   | Rotating direction:                                   | opposite                |
|   | Coolant:  | IC/Ext                  |
|   | Pressure max [bar]:                                   | 140                     |
|   | Please note:  | stronger bearing        |
|   | Offset [mm]:  | 42                      |

| Part-#  | Name   |  |
|---|--|--|
| <b>8 030 54 053</b>   | <b>Radial drilling and milling head ER 16 AX UT IC</b> |  |
|   | Weight [kg]:   | 7.290                                  |
|   | Notation:  | 180° reversible                        |
|   | Tool drive:  | Flat (~DIN 1809)                       |
|   | Shank size [mm]:                                       | 55.00                                  |
|   | Shank type:  | BMT                                    |
|   | Tool adaption:   | ER 16 A - u-tec                        |
|   | Gear ratio [i]:  | 1:4                                    |
|   | Torque max [Nm]:                                       | 5                                      |
|   | Rotation max [1/min]:                                  | 24000                                  |
|   | Rotating direction:                                    | opposite                               |
|   | Coolant:   | IC/Ext                                 |
|   | Pressure max [bar]:                                    | 140                                    |
|   | Center distance [mm]:                                  | 70                                     |
| <b>8 030 55 058</b>   | <b>Radial drilling and milling head C 3</b>            |  |
|  | Weight [kg]:   | 7.560                                  |
|   | Notation:  | 180° reversible                        |
|   | Tool drive:  | Flat (~DIN 1809)                       |
|   | Shank size [mm]:                                       | 55.00                                  |
|   | Shank type:  | BMT                                    |
|   | Tool adaption:   | heimatec Capto(TM) C 3                 |
|   | Gear ratio [i]:  | 1:1                                    |
|   | Torque max [Nm]:                                       | 25                                     |
|   | Rotation max [1/min]:                                  | 8000                                   |
|   | Rotating direction:                                    | opposite                               |
|   | Coolant:   | EXT                                    |
|   | Please note:   | Check applicability; note tool length! |
|   | Center distance [mm]:                                  | 70                                     |
| <b>8 030 55 067</b>   | <b>Radial drilling and milling head ER 25 AX UT IC</b> |  |
|   | Notation:  | 180° reversible                        |
|   | Tool drive:  | Flat (~DIN 1809)                       |
|   | Shank size [mm]:                                       | 55.00                                  |
|   | Shank type:  | BMT                                    |
|   | Tool adaption:   | ER 25 A - u-tec                        |
|   | Gear ratio [i]:  | 1:3                                    |
|   | Torque max [Nm]:                                       | 12                                     |
|   | Rotation max [1/min]:                                  | 18000                                  |
|   | Rotating direction:                                    | same                                   |
|   | Coolant:   | IC/Ext                                 |
|   | Pressure max [bar]:                                    | 140                                    |
|   | Please note:   | stronger bearing                       |
|   | Center distance [mm]:                                  | 80                                     |
| <b>8 030 55 068</b>   | <b>Radial drilling and milling head ER 25 AX UT</b>    |  |
|   | Weight [kg]:   | 6.360                                  |
|   | Notation:  | 180° reversible                        |
|   | Tool drive:  | Flat (~DIN 1809)                       |
|   | Shank size [mm]:                                       | 55.00                                  |
|   | Shank type:  | BMT                                    |
|   | Tool adaption:   | ER 25 A - u-tec                        |
|   | Gear ratio [i]:  | 1:2                                    |
|   | Torque max [Nm]:                                       | 16                                     |
|   | Rotation max [1/min]:                                  | 12000                                  |
|   | Rotating direction:                                    | same                                   |
|   | Coolant:   | EXT                                    |
|   | Please note:   | stronger bearing                       |

| Part-# | Name |
|--------|------|
|--------|------|

Center distance [mm]: 80

**8 030 55 069 Radial drilling and milling head ER 25 AX UT**

Weight [kg]: 6.365  
 Notation: 180° reversible  
 Tool drive: Flat (~DIN 1809)  
 Shank size [mm]: 55.00  
 Shank type: BMT  
 Tool adaption: ER 25 A - u-tec  
 Gear ratio [i]: 1:3  
 Torque max [Nm]: 12  
 Rotation max [1/min]: 18000  
 Rotating direction: same  
 Coolant: EXT  
 Please note: stronger bearing  
 Center distance [mm]: 80

**8 030 55 102 Radial drilling and milling head ER 25 AX UT**



Weight [kg]: 6.900  
 Notation: 180° reversible  
 Tool drive: Flat (~DIN 1809)  
 Shank size [mm]: 55.00  
 Shank type: BMT  
 Tool adaption: ER 25 A - u-tec  
 Gear ratio [i]: 1:1  
 Torque max [Nm]: 50  
 Rotation max [1/min]: 12000  
 Rotating direction: same  
 Coolant: EXT  
 Center distance [mm]: 70

**8 030 55 120 Radial drilling and milling head ER 25 AX UT IC**



Tool drive: Flat (~DIN 1809)  
 Shank size [mm]: 55.00  
 Tool adaption: ER 25 A - u-tec  
 Gear ratio [i]: 1:1  
 Torque max [Nm]: 50  
 Rotation max [1/min]: 12000  
 Rotating direction: same  
 Coolant: IC/Ext  
 Pressure max [bar]: 140  
 Center distance [mm]: 70

**8 030 55 175 Radial drilling and milling head ER 25 AX UT**



Notation: 180° reversible  
 Tool drive: Flat (~DIN 1809)  
 Shank size [mm]: 55.00  
 Shank type: BMT  
 Tool adaption: ER 25 A - u-tec  
 Gear ratio [i]: 1:1  
 Torque max [Nm]: 50  
 Rotation max [1/min]: 12000  
 Rotating direction: same  
 Coolant: EXT  
 Please note: stronger bearing  
 Center distance [mm]: 60

| Part-# | Name |
|--------|------|
|--------|------|

**8 030 55 176**



**Radial drilling and milling head ER 25 AX UT IC**  
 Weight [kg]: 6.500  
 Notation: 180° reversible  
 Tool drive: Flat (~DIN 1809)  
 Shank size [mm]: 55.00  
 Shank type: BMT  
 Tool adaption: ER 25 A - u-tec  
 Gear ratio [i]: 1:1  
 Torque max [Nm]: 50  
 Rotation max [1/min]: 12000  
 Rotating direction: same  
 Coolant: IC/Ext  
 Pressure max [bar]: 140  
 Please note: stronger bearing  
 Center distance [mm]: 60

**8 030 56 052**

**Radial drilling and milling head ER 32 AX UT**  
 Tool drive: Flat (~DIN 1809)  
 Shank size [mm]: 55.00  
 Shank type: BMT  
 Tool adaption: ER 32 A - u-tec  
 Gear ratio [i]: 1:1  
 Torque max [Nm]: 50  
 Rotation max [1/min]: 6000  
 Rotating direction: same  
 Coolant: EXT  
 Please note: stronger bearing  
 Center distance [mm]: 70

**8 030 56 056**



**Radial drilling and milling head ER 32 AX UT IC**  
 Weight [kg]: 7.150  
 Notation: 180° reversible  
 Tool drive: Flat (~DIN 1809)  
 Shank size [mm]: 55.00  
 Shank type: BMT  
 Tool adaption: ER 32 A - u-tec  
 Gear ratio [i]: 1:1  
 Torque max [Nm]: 50  
 Rotation max [1/min]: 12000  
 Rotating direction: same  
 Coolant: IC/Ext  
 Pressure max [bar]: 140  
 Center distance [mm]: 70

**8 030 56 172**

**Radial drilling and milling head ER 32 AX UT IC**  
 Weight [kg]: 6.830  
 Notation: 180° reversible  
 Tool drive: Flat (~DIN 1809)  
 Shank size [mm]: 55.00  
 Shank type: BMT  
 Tool adaption: ER 32 A - u-tec  
 Gear ratio [i]: 2:1  
 Torque max [Nm]: 63  
 Rotation max [1/min]: 3000  
 Rotating direction: opposite  
 Coolant: IC/Ext  
 Pressure max [bar]: 140

| Part-# | Name |
|--------|------|
|--------|------|

Please note: Combi bearing  
Center distance [mm]: 70

**8 030 56 274 Radial drilling and milling head ER 32 AX UT**



Weight [kg]: 6.720  
Notation: 180° reversible  
Tool drive: Flat (~DIN 1809)  
Shank size [mm]: 55.00  
Shank type: BMT  
Tool adaption: ER 32 A - u-tec  
Gear ratio [i]: 1:1  
Torque max [Nm]: 50  
Rotation max [1/min]: 12000  
Rotating direction: same  
Coolant: EXT  
Center distance [mm]: 70

**8 037 54 024 Radial disk mill head arbor 16**



Weight [kg]: 11.300  
Notation: 180° reversible  
Version: ± 20° turnable; at 0° position can be pinned  
Tool drive: Flat (~DIN 1809)  
Shank size [mm]: 55.00  
Shank type: BMT  
Tool adaption: Arbor 16  
Gear ratio [i]: 2:1  
Torque max [Nm]: 63  
Rotation max [1/min]: 3000  
Rotating direction: same  
Coolant: no  
Please note: strong version with stronger bearing; use  
Center distance [mm]: 83,5

**8 039 55 036 Radial drilling and milling head ER 25 AX UT**



Weight [kg]: 7.110  
Notation: 180° reversible  
Employment for: Main- and sub spindle  
Version: double spindle  
Tool drive: Flat (~DIN 1809)  
Shank size [mm]: 55.00  
Shank type: BMT  
Tool adaption: ER 25 A - u-tec  
Gear ratio [i]: 1:1  
Torque max [Nm]: 50  
Rotation max [1/min]: 6000  
Rotating direction: same/opposite  
Coolant: EXT  
Please note: stronger bearing  
Center distance [mm]: 70

| Part-# | Name |
|--------|------|
|--------|------|

8 039 55 051



**Radial drilling and milling head ER 25 AX UT**

Weight [kg]: 7.000  
 Version: double spindle  
 Tool drive: Flat (~DIN 1809)  
 Shank size [mm]: 55.00  
 Shank type: BMT  
 Tool adaption: ER 25 A - u-tec  
 Gear ratio [i]: 1:1  
 Torque max [Nm]: 50  
 Rotation max [1/min]: 12000  
 Rotating direction: same/opposite  
 Coolant: EXT  
 Center distance [mm]: 60

8 039 56 022

**Radial drilling and milling head ER 32 AX UT**

Weight [kg]: 7.000  
 Notation: 180° reversible  
 Employment for: Main- and sub spindle  
 Version: double spindle  
 Tool drive: Flat (~DIN 1809)  
 Shank size [mm]: 55.00  
 Shank type: BMT  
 Tool adaption: ER 32 A - u-tec  
 Gear ratio [i]: 1:1  
 Torque max [Nm]: 50  
 Rotation max [1/min]: 6000  
 Rotating direction: same/opposite  
 Coolant: EXT  
 Please note: stronger bearing  
 Center distance [mm]: 70

8 039 56 035

**Radial drilling and milling head ER 32 AX UT**

Weight [kg]: 6.970  
 Notation: 180° reversible  
 Employment for: Main- and sub spindle  
 Version: double spindle, special  
 Tool drive: Flat (~DIN 1809)  
 Shank size [mm]: 55.00  
 Shank type: BMT  
 Tool adaption: ER 32 A - u-tec  
 Gear ratio [i]: 1:1  
 Torque max [Nm]: 50  
 Rotation max [1/min]: 6000  
 Rotating direction: same/opposite  
 Coolant: no  
 Please note: Operation only with air purge, no coolant  
 Center distance [mm]: 70


8 043 54 006



**Universal head +110°/-20° adj. ER16 AX UT**

Weight [kg]: 5.940  
 Notation: offset; 180° reversible  
 Tool drive: Flat (~DIN 1809)  
 Shank size [mm]: 55.00  
 Shank type: BMT  
 Tool adaption: ER 16 A - u-tec  
 Gear ratio [i]: 1:1  
 Torque max [Nm]: 25

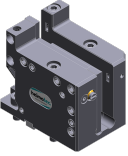

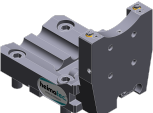
| Part-#  | Name  |                         |
|---|---|-------------------------|
|   | Rotation max [1/min]:                             | 6000                    |
|   | Rotating direction:                               | opposite                |
|   | Coolant:  | EXT                     |
|   | Center distance [mm]:                             | 50                      |
|   | Offset [mm]:                                      | 35                      |
| <b>8 043 54 013</b>   | <b>Universal head +110°/-20° adj. ER16 AX UT</b>  |                         |
|    | Weight [kg]:                                      | 6.320                   |
|   | Notation:   | offset; 180° reversible |
|   | Tool drive:                                       | Flat (~DIN 1809)        |
|   | Shank size [mm]:                                  | 55.00                   |
|   | Shank type:                                       | BMT                     |
|   | Tool adaption:                                    | ER 16 A - u-tec         |
|   | Gear ratio [i]:                                   | 1:2                     |
|   | Torque max [Nm]:                                  | 12                      |
|   | Rotation max [1/min]:                             | 12000                   |
|   | Rotating direction:                               | opposite                |
|   | Coolant:  | EXT                     |
|   | Center distance [mm]:                             | 50                      |
|   | Offset [mm]:                                      | 35                      |
| <b>8 043 55 005</b>   | <b>Universal head +110°/-20° adj. ER25 AX UT</b>  |                         |
|  | Weight [kg]:                                      | 6.170                   |
|   | Notation:   | offset, 180° reversible |
|   | Tool drive:                                       | Flat (~DIN 1809)        |
|   | Shank size [mm]:                                  | 55.00                   |
|   | Shank type:                                       | BMT                     |
|   | Tool adaption:                                    | ER 25 A - u-tec         |
|   | Gear ratio [i]:                                   | 1:1                     |
|   | Torque max [Nm]:                                  | 25                      |
|   | Rotation max [1/min]:                             | 6000                    |
|   | Rotating direction:                               | opposite                |
|   | Coolant:  | EXT                     |
|   | Please note:                                      | stronger bearing        |
|   | Center distance [mm]:                             | 50                      |
|   | Offset [mm]:                                      | 35                      |
| <b>8 043 55 009</b>   | <b>Universal head +110°/-20° adj. ER25AX UTIK</b> |                         |
|  | Weight [kg]:                                      | 6.320                   |
|   | Notation:   | offset, 180° reversible |
|   | Tool drive:                                       | Flat (~DIN 1809)        |
|   | Shank size [mm]:                                  | 55.00                   |
|   | Shank type:                                       | BMT                     |
|   | Tool adaption:                                    | ER 25 A - u-tec         |
|   | Gear ratio [i]:                                   | 1:1                     |
|   | Torque max [Nm]:                                  | 25                      |
|   | Rotation max [1/min]:                             | 6000                    |
|   | Rotating direction:                               | opposite                |
|   | Coolant:  | IC/Ext                  |
|   | Pressure max [bar]:                               | 25                      |
|   | Please note:                                      | stronger bearing        |
|   | Center distance [mm]:                             | 50                      |
|   | Offset [mm]:                                      | 35                      |

| Part-#  | Name   |                               |
|---|--|-------------------------------|
| <b>8 043 55 027</b>   | <b>Universal head +110°/-20° adj. ER25 AX UT</b> |                               |
|    | Weight [kg]:                                     | 6.180                         |
|   | Notation:  | offset, 180° reversible       |
|   | Version:   | at 45° position can be pinned |
|   | Tool drive:                                      | Flat (~DIN 1809)              |
|   | Shank size [mm]:                                 | 55.00                         |
|   | Shank type:                                      | BMT                           |
|   | Tool adaption:                                   | ER 25 A - u-tec               |
|   | Gear ratio [i]:                                  | 1:1                           |
|   | Torque max [Nm]:                                 | 25                            |
|   | Rotation max [1/min]:                            | 6000                          |
|   | Rotating direction:                              | opposite                      |
|   | Coolant:   | EXT                           |
|   | Please note:                                     | stronger bearing              |
|   | Center distance [mm]:                            | 50                            |
|   | Offset [mm]:                                     | 35                            |
| <b>8 053 54 030</b>   | <b>Multispindle radial head ER 16 AXUT IC</b>    |                               |
|   | Weight [kg]:                                     | 6.880                         |
|   | Notation:  | 180° reversible               |
|   | Version:   | 2-spindles                    |
|   | Tool drive:                                      | Flat (~DIN 1809)              |
|   | Shank size [mm]:                                 | 55.00                         |
|   | Shank type:                                      | BMT                           |
|   | Tool adaption:                                   | ER 16 A - u-tec               |
|   | Gear ratio [i]:                                  | 1:2                           |
|   | Torque max [Nm]:                                 | 8                             |
|   | Rotation max [1/min]:                            | 12000                         |
|   | Rotating direction:                              | same                          |
|   | Coolant:   | IC/Ext                        |
|   | Pressure max [bar]:                              | 25                            |
|   | Center distance [mm]:                            | 70                            |
| <b>8 200 02 003</b>   | <b>Cover plate</b>                               |                               |
|  | Weight [kg]:                                     | 0.361                         |
|   | Shank size [mm]:                                 | 55.00                         |
|   | Shank type:                                      | BMT                           |
| <b>8 202 00 009</b>   | <b>Basic holder longitudinal seat FN 12</b>      |                               |
|  | Weight [kg]:                                     | 1.140                         |
|   | Notation:  | 180° reversible               |
|   | Shank type:                                      | BMT                           |
|   | Machine adaption:                                | Centering key b 15            |
|   | Tool adaption:                                   | Interface FN 12               |
|   | Coolant:   | EXT                           |
| <b>8 224 03 003</b>   | <b>Cut-off holder SH 32</b>                      |                               |
|  | Weight [kg]:                                     | 1.810                         |
|   | Notation:  | 180° reversible               |
|   | Employment for:                                  | Cut-off tool 32               |
|   | Version:   | Clampshaft on turret side     |
|   | Shank type:                                      | BMT                           |
|   | Machine adaption:                                | Centering key b 15            |

| Part-#  | Name   |   |
|---|--|---|
|   | Tool adaption:<br>Coolant:   | Clampshaft SH 32<br>EXT   |
| <b>8 224 04 002</b>   | <b>Universal turning holder sq. 20</b>   |   |
|    | Weight [kg]:<br>Shank type:<br>Machine adaption:<br>Tool adaption:<br>Coolant:   | 3.460<br>BMT<br>Centering key b 15<br>Sq. 20<br>EXT   |
| <b>8 224 04 062</b>   | <b>Universal turning holder sq. 20 IC</b>  |   |
|    | Weight [kg]:<br>Shank type:<br>Machine adaption:<br>Tool adaption:<br><br>Coolant:<br>Pressure max [bar]:<br>Please note:          | 3.020<br>BMT<br>Centering key b 15<br>Sq. 20<br>Sq. 20<br>IC/Ext<br>100<br>Key rail                             |
| <b>8 224 05 003</b>   | <b>Universal turning holder sq. 25</b>   |   |
|   | Weight [kg]:<br>Notation:<br>Shank type:<br>Machine adaption:<br>Tool adaption:<br>Coolant:  | 3.620<br>180° reversible<br>BMT<br>Centering key b 15<br>Sq. 25<br>EXT  |
| <b>8 224 05 005</b>   | <b>Universal turning holder sq. 1"</b>   |   |
|  | Weight [kg]:<br>Shank type:<br>Machine adaption:<br>Tool adaption:<br>Coolant:   | 3.560<br>BMT<br>Centering key b 15<br>Sq. 1" (25,4mm)<br>EXT  |
| <b>8 224 05 015</b>   | <b>Universal turning holder sq. 25/20</b>  |   |
|  | Weight [kg]:<br>Notation:<br>Shank type:<br>Machine adaption:<br>Tool adaption:<br>Coolant:<br>Pressure max [bar]:<br>Please note: | 3.780<br>180° reversible<br>BMT<br>Centering key b 15<br>Sq. 25/20<br>EXT<br>80<br>with spacer strip for sq. 20 |
| <b>8 224 05 023</b>   | <b>Universal turning holder sq. 25/20</b>  |   |
|  | Weight [kg]:<br>Notation:<br>Shank type:<br>Machine adaption:<br>Tool adaption:<br>Coolant:<br>Please note:                        | 3.150<br>180° reversible<br>BMT<br>Centering key b 15<br>Sq. 25/20<br>EXT<br>with spacer strip for sq. 20       |

| Part-#  | Name                              |                       |
|---|-----------------------------------|-----------------------|
| <b>8 240 07 024</b>   | <b>Boring bar holder Ø 1 1/4"</b> |                       |
|    | Weight [kg]:                      | 5.760                 |
|   | Notation:                         | 180° reversible       |
|   | Employment for:                   | Main- and sub spindle |
|   | Shank type:                       | BMT                   |
|   | Machine adaption:                 | Centering key b 15    |
|   | Tool adaption:                    | Ø 1 1/4" (31,75mm)    |
|   | Coolant:                          | IC/Ext                |
|   | Center distance [mm]:             | 70                    |
| <b>8 240 07 069</b>   | <b>Boring bar holder Ø 25</b>     |                       |
|    | Notation:                         | 180° reversible       |
|   | Employment for:                   | Main- and sub spindle |
|   | Shank type:                       | BMT                   |
|   | Machine adaption:                 | Centering key b 15    |
|   | Tool adaption:                    | Ø 25                  |
|   | Coolant:                          | IC/Ext                |
|   | Center distance [mm]:             | 70                    |
| <b>8 240 08 002</b>   | <b>Boring bar holder Ø 32</b>     |                       |
|   | Weight [kg]:                      | 5.810                 |
|   | Notation:                         | 180° reversible       |
|   | Employment for:                   | Main- and sub spindle |
|   | Shank type:                       | BMT                   |
|   | Machine adaption:                 | Centering key b 15    |
|   | Tool adaption:                    | Ø 32                  |
|   | Coolant:                          | IC/Ext                |
|   | Center distance [mm]:             | 70                    |
| <b>8 240 08 009</b>   | <b>Boring bar holder Ø 1 1/2"</b> |                       |
|  | Weight [kg]:                      | 5.470                 |
|   | Notation:                         | 180° reversible       |
|   | Employment for:                   | Main- and sub spindle |
|   | Shank type:                       | BMT                   |
|   | Machine adaption:                 | Centering key b 15    |
|   | Tool adaption:                    | Ø 1 1/2" (38,1mm)     |
|   | Coolant:                          | IC/Ext                |
|   | Center distance [mm]:             | 70                    |
| <b>8 240 08 061</b>   | <b>Boring bar holder Ø 32</b>     |                       |
|  | Weight [kg]:                      | 6.490                 |
|   | Notation:                         | 180° reversible       |
|   | Employment for:                   | Main- and sub spindle |
|   | Shank type:                       | BMT                   |
|   | Machine adaption:                 | Centering key b 15    |
|   | Tool adaption:                    | Ø 32                  |
|   | Coolant:                          | IC/Ext                |
|   | Center distance [mm]:             | 80                    |
| <b>8 240 09 009</b>   | <b>Boring bar holder Ø 40</b>     |                       |
|   | Weight [kg]:                      | 5.640                 |
|   | Notation:                         | 180° reversible       |
|   | Employment for:                   | Main- and sub spindle |
|   | Shank type:                       | BMT                   |
|   | Machine adaption:                 | Centering key b 15    |
|   | Tool adaption:                    | Ø 40                  |

| Part-#  | Name                                      |                                       |
|---|---|---------------------------------------|
|   | Coolant:                                  | IC/Ext                                |
|   | Pressure max [bar]:                       | 80                                    |
|   | Center distance [mm]:                     | 70                                    |
| <b>8 244 05 003</b>   | <b>Combi facing holder sq. 25</b>         |                                       |
|    | Weight [kg]:                              | 5.340                                 |
|   | Notation:                                 | 180° reversible                       |
|   | Employment for:                           | Main- and sub spindle                 |
|   | Shank type:                               | BMT                                   |
|   | Machine adaption:                         | Centering key b 15                    |
|   | Tool adaption:                            | Sq. 25                                |
|   | Coolant:                                  | EXT                                   |
|   | Pressure max [bar]:                       | 80                                    |
| <b>8 244 05 006</b>   | <b>Combi facing holder sq. 1"</b>         |                                       |
|    | Weight [kg]:                              | 5.310                                 |
|   | Notation:                                 | 180° reversible                       |
|   | Employment for:                           | Main- and sub spindle                 |
|   | Shank type:                               | BMT                                   |
|   | Machine adaption:                         | Centering key b 15                    |
|   | Tool adaption:                            | Sq. 1" (25,4mm)                       |
|   | Coolant:                                  | EXT                                   |
| <b>8 251 05 001</b>   | <b>Combi double turning holder sq. 25</b> |                                       |
|  | Weight [kg]:                              | 7.700                                 |
|   | Employment for:                           | Main- and sub spindle                 |
|   | Shank type:                               | BMT                                   |
|   | Machine adaption:                         | Centering key b 15                    |
|   | Tool adaption:                            | Sq. 25                                |
|   |   | Sq. 25                                |
|   |   | Sq. 25                                |
|   |   | Sq. 25                                |
|   | Coolant:                                  | EXT                                   |
|   | Pressure max [bar]:                       | 80                                    |
| <b>8 253 07 011</b>   | <b>Double boring bar holder Ø 25</b>      |                                       |
|  | Weight [kg]:                              | 6.770                                 |
|   | Notation:                                 | 180° reversible                       |
|   | Employment for:                           | Main- and sub spindle                 |
|   | Shank type:                               | BMT                                   |
|   | Machine adaption:                         | Centering key b 15                    |
|   | Tool adaption:                            | Ø 25                                  |
|   |   | Ø 25                                  |
|   | Coolant:                                  | IC/Ext                                |
|   | Pressure max [bar]:                       | 80                                    |
|   | Please note:                              | Check applicability; note tool length |
|   | Center distance [mm]:                     | 52/97                                 |
| <b>8 253 07 031</b>   | <b>Double boring bar holder Ø 1"</b>      |                                       |
|  | Weight [kg]:                              | 7.620                                 |
|   | Notation:                                 | 180° reversible                       |
|   | Employment for:                           | Main- and sub spindle                 |
|   | Shank type:                               | BMT                                   |
|   | Machine adaption:                         | Centering key b 15                    |
|   | Tool adaption:                            | Ø 1" (25,4mm)                         |
|   |   | Ø 1" (25,4mm)                         |


| Part-#  | Name  |                       |
|---|---|-----------------------|
|   | Coolant:  | IC/Ext                |
|   | Center distance [mm]:                             | 52/97                 |
| <b>8 253 07 047</b>   | <b>Double boring bar holder Ø 25</b>              |                       |
|   | Weight [kg]:                                      | 6.940                 |
|   | Notation:   | 180° reversible       |
|   | Employment for:                                   | Main- and sub spindle |
|   | Shank type:                                       | BMT                   |
|   | Machine adaption:                                 | Centering key b 15    |
|   | Tool adaption:                                    | Ø 25                  |
|   |   | Ø 25                  |
|   | Coolant:  | IC/Ext                |
|   | Center distance [mm]:                             | 44/87                 |
| <b>8 253 08 002</b>   | <b>Double boring bar holder Ø 32</b>              |                       |
|   | Weight [kg]:                                      | 6.340                 |
|   | Notation:   | 180° reversible       |
|   | Employment for:                                   | Main- and sub spindle |
|   | Shank type:                                       | BMT                   |
|   | Machine adaption:                                 | Centering key b 15    |
|   | Tool adaption:                                    | Ø 32                  |
|   |   | Ø 32                  |
|   | Coolant:  | IC/Ext                |
|   | Center distance [mm]:                             | 44/87                 |
| <b>8 259 04 007</b>   | <b>Multiple turning holder sq. 20</b>             |                       |
|  | Weight [kg]:                                      | 8.180                 |
|   | Notation:   | 180° reversible       |
|   | Employment for:                                   | Main- and sub spindle |
|   | Version:  | Special               |
|   | Shank type:                                       | BMT                   |
|   | Machine adaption:                                 | Centering key b 15    |
|   | Tool adaption:                                    | Sq. 20                |
|   |   | Sq. 20                |
|   |   | Sq. 20                |
|   | Coolant:  | IC/Ext                |
| <b>8 320 03 008</b>   | <b>Cut-off holder, height adjustable SH 32 IC</b> |                       |
|  | Weight [kg]:                                      | 1.790                 |
|   | Notation:   | 180° reversible       |
|   | Shank type:                                       | BMT                   |
|   | Machine adaption:                                 | Centering key b 15    |
|   | Tool adaption:                                    | Clampshaft SH 32      |
|   | Coolant:  | IC/Ext                |
|   | Pressure max [bar]:                               | 70                    |
| <b>8 320 03 025</b>   | <b>Cut-off holder, height adjustable SH 32 IC</b> |                       |
|  | Weight [kg]:                                      | 1.910                 |
|   | Notation:   | 180° reversible       |
|   | Shank type:                                       | BMT                   |
|   | Machine adaption:                                 | Centering key b 15    |
|   | Tool adaption:                                    | Clampshaft SH 32      |
|   | Coolant:  | IC/Ext                |
|   | Pressure max [bar]:                               | 70                    |
|   | Please note:                                      | Clampshaft internal   |

Daewoo  
Puma 230 MB

| Part-# | Name |
|--------|------|
|--------|------|

**8 320 09 001**    **Cut-off holder, height adjustable 845 IC**



|                     |  |
|---------------------|--|
| Weight [kg]:        | 1.730  |
| Notation:           | 180° reversible  |
| Shank type:         | BMT  |
| Machine adaption:   | Centering key b 15   |
| Tool adaption:      |  System 845 |
| Coolant:            | IC   |
| Pressure max [bar]: | 70   |



● heimatec overseas branches

○ global representations of heimatec

**heimatec**<sup>®</sup>

**heimatec GmbH**  
Präzisionswerkzeuge  
Carl-Benz-Str. 4  
77871 Renchen  
Germany

T +49 7843 9466 0  
[www.heimatec.com](http://www.heimatec.com)  
[info@heimatec.com](mailto:info@heimatec.com)

Please find the contact details of our worldwide trading partners on our website:  
<https://heimatec.com/business-partners>