

TOPSELLER -
many more available!

Live Tools

heimatec®

Hyundai-WIA

L 300 MA/LMA/MC/LMC

| Part-# | Tool adaption | Rotation max [1/min] | Gear ratio | Coolant | Pressure max. | Center distance |
|---|------------------------|----------------------|------------|---------|---------------|-----------------|
| Axial drilling and milling head | | | | | | |
| 8 010 66 143 | ER 32 A - u-tec | 12.000 | 1:1 | IC/Ext | 100 bar | -- |
| 8 010 66 144 | ER 32 A - u-tec | 12.000 | 1:1 | IC/Ext | 25 bar | -- |
| 8 010 66 145 | ER 32 A - u-tec | 12.000 | 1:1 | EXT | 140 bar | -- |
| Radial drilling and milling head | | | | | | |
| 8 030 65 055 | ER 25 A - u-tec | 12.000 | 1:2 | EXT | -- | 95 mm |
| 8 030 66 239 | ER 32 A - u-tec | 10.000 | 1:1 | EXT | 140 bar | 72 mm |
| 8 030 66 243 | ER 32 A - u-tec | 10.000 | 1:1 | IC/Ext | 140 bar | 72 mm |
| Universal head, offset | | | | | | |
| 8 043 65 000 | ER 25 A - u-tec | 6.000 | 1:1 | EXT | -- | 69 mm |
| 8 043 65 004 | ER 25 A - u-tec | 6.000 | 1:1 | IC/Ext | 140 bar | 69 mm |

Illustrations similar.



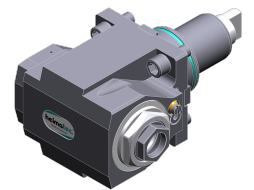
8 010 66 143



8 010 66 144



8 030 66 239



8 030 66 243



8 043 65 000

TOPSELLER -
many more available!

Static Tools

heimatec®

Hyundai-WIA

L 300 MA/LMA/MC/LMC

| Part-# | Tool adaption | Coolant | Pressure max. | Center distance |
|--|-------------------------|---------|---------------|-----------------|
| Universal turning holder | | | | |
| 8 224 15 005 | Sq. 25 | EXT | 80 bar | -- |
| 8 224 15 006 | Sq. 25 | EXT | 80 bar | -- |
| 8 224 15 052 | Sq. 25 | IC/Ext | 100 bar | -- |
| 8 224 15 053 | Sq. 25 | IC/Ext | 100 bar | -- |
| Boring bar holder | | | | |
| 8 240 17 044 | Ø 25 | IC/Ext | -- | 72 mm |
| 8 240 18 028 | Ø 32 | IC/Ext | -- | 72 mm |
| 8 240 19 067 | Ø 50 | IC/Ext | 80 bar | 72 mm |
| Combi facing holder | | | | |
| 8 244 15 005 | Sq. 25 | EXT | 80 bar | -- |
| Cut-off holder, height adjustable | | | | |
| 8 320 13 005 | Clampshaft SH 32 | IC/Ext | 70 bar | -- |

Illustrations similar.



8 224 15 005



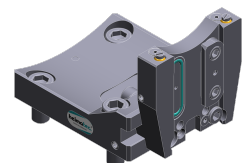
8 224 15 006



8 240 17 044



8 244 15 005



8 320 13 005