

TOPSELLER -
many more available!

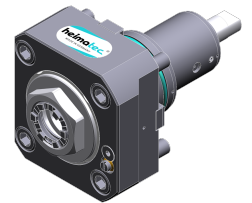
Live Tools

heimatec®

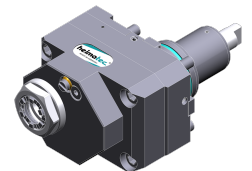
Hyundai-WIA LM 1600 TT serie

Part-#	Tool adaption	Rotation max [1/min]	Gear ratio	Coolant	Pressure max.	Center distance
Axial drilling and milling head						
8 010 55 038	ER 25 A - u-tec	6.000	1:1	IC/Ext	25 bar	--
8 010 55 039	ER 25 A - u-tec	12.000	1:1	EXT	140 bar	--
Axial drilling and milling head, offset						
8 019 55 054	ER 25 A - u-tec	6.000	1:1	IC/Ext	140 bar	--
Radial drilling and milling head						
8 030 55 256	ER 25 A - u-tec	12.000	1:1	IC/Ext	140 bar	85 mm
8 030 56 173	ER 32 A - u-tec	6.000	2:1	EXT	--	85 mm
8 030 56 246	ER 32 A - u-tec	12.000	1:1	IC/Ext	140 bar	85 mm
8 030 56 247	ER 32 A - u-tec	12.000	1:1	EXT	--	85 mm
Radial drilling and milling head, double spindle						
8 039 55 026	ER 25 A - u-tec	12.000	1:1	EXT	--	85 mm
8 039 56 029	ER 32 A - u-tec	12.000	1:1	EXT	--	85 mm
Universal head, offset						
8 043 55 005	ER 25 A - u-tec	6.000	1:1	EXT	--	50 mm

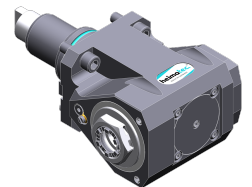
Illustrations similar.



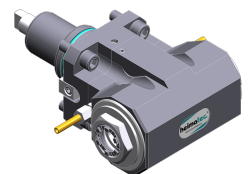
8 010 55 038



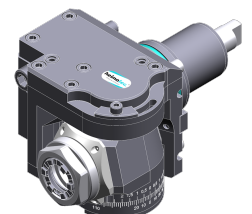
8 019 55 054



8 030 55 256



8 039 55 026



8 043 55 005

TOPSELLER -
many more available!

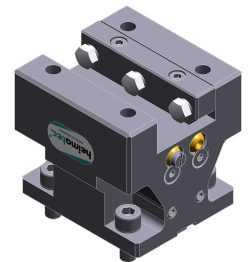
Static Tools

heimatec®

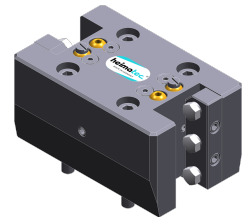
Hyundai-WIA LM 1600 TT serie

Part-#	Tool adaption	Coolant	Pressure max.
Combi facing holder 8 244 05 003	Sq. 25	EXT	80 bar
Double turning holder 8 251 05 001	Sq. 25	EXT	80 bar
Multiple turning holder 8 259 04 007	Sq. 20	IC/Ext	--
Cut-off holder, height adjustable 8 320 03 025	Clampshaft SH 32	IC/Ext	70 bar

Illustrations similar.



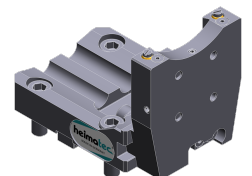
8 244 05 003



8 251 05 001



8 259 04 007



8 320 03 025