

Gildemeister
Twin 32



High-tech from heimatec - heimatec - Tools and systems for productive turning and milling

heimatec belongs to the international technology and quality leaders for precision tools and specializes in the development and production of high-precision static and live tools for all CNC lathes, CNC turn-/mill machines and CNC machining centers.

The range of products* spans from static BMT and VDI tool holders, live tools up to highly complex customer-specific individual solutions. heimatec, headquartered in Renchen, has a own subsidiary in Asia and India and numerous representatives as well as trading partners all over the world.

*OUR PRODCUTS

Static tool holders

Live tool units

Precision tools

Tools for turning and machining centres

Tools for swiss type lathes

Tool changing and uick-change systems

Tool systems for gear production

Digital tool management

This catalogue, including all its parts, is protected by copyright. Any use outside the restricted limitations of the Copyright Act without the consent of heimatec is inadmissible and liable to prosecution. This applies in particular to duplication, translation, microfilming and storage and processing in electronic systems.

heimatec GmbH reserves the right to make technical changes at any time without giving prior notice. This applies in particular to adjustments at any time to meet new or changed international standards, or in case of further developments of our products or manufacturing processes.

The current version of our General Terms and Conditions can be found on our website.

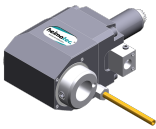
Part-#	Name	
	8 010 25 077	Axial drilling and milling head ER 25
	Weight [kg]:	1.920
	Tool drive:	DIN 5480
	Shank size [mm]:	25.00
	Shank type:	VDI
	Tool adaption:	ER 25
	Gear ratio [i]:	1:1
	Torque max [Nm]:	16
	Rotation max [1/min]:	6000
	Rotating direction:	same
Coolant:	EXT	
Please note:	stronger bearing	
	8 010 25 078	Axial drilling and milling head ER 25 IC
	Weight [kg]:	1.920
	Tool drive:	DIN 5480
	Shank size [mm]:	25.00
	Shank type:	VDI
	Tool adaption:	ER 25
	Gear ratio [i]:	1:1
	Torque max [Nm]:	16
	Rotation max [1/min]:	6000
	Rotating direction:	same
Coolant:	IC/Ext	
	8 010 25 082	Axial drilling and milling head ER 25 AX UT IC
	Weight [kg]:	1.860
	Tool drive:	DIN 5480
	Shank size [mm]:	25.00
	Shank type:	VDI
	Tool adaption:	ER 25 A - u-tec
	Gear ratio [i]:	1:1
	Torque max [Nm]:	16
	Rotation max [1/min]:	8000
	Rotating direction:	same
Coolant:	IC/Ext	
Pressure max [bar]:	25	
	8 010 25 083	Axial drilling and milling head ER 25 AX UT
	Weight [kg]:	1.880
	Tool drive:	DIN 5480
	Shank size [mm]:	25.00
	Shank type:	VDI
	Tool adaption:	ER 25 A - u-tec
	Gear ratio [i]:	1:1
	Torque max [Nm]:	16
	Rotation max [1/min]:	8000
	Rotating direction:	same
Coolant:	EXT	
Please note:	stronger bearing	

Part-#	Name	
8 016 24 015	Axial drilling and milling head ER 16 AX UT IC	
	Weight [kg]:	4.130
	Notation:	offset
	Employment for:	Main- and sub spindle
	Version:	doubletoothed
	Tool drive:	DIN 5480
	Shank size [mm]:	25.00
	Shank type:	VDI
	Tool adaption:	ER 16 A - u-tec
	Gear ratio [i]:	1:2
	Torque max [Nm]:	16
	Rotation max [1/min]:	16000
	Rotating direction:	opposite
	Coolant:	IC/Ext
	Pressure max [bar]:	140
	Offset [mm]:	34,5
8 030 25 096	Radial drilling and milling head ER 25	
	Version:	left
	Tool drive:	DIN 5480
	Shank size [mm]:	25.00
	Shank type:	VDI
	Tool adaption:	ER 25
	Gear ratio [i]:	1:1
	Torque max [Nm]:	16
	Rotation max [1/min]:	6000
	Rotating direction:	opposite
	Coolant:	EXT
	Center distance [mm]:	75
8 030 25 097	Radial drilling and milling head ER 25 IC	
	Weight [kg]:	3.480
	Version:	left
	Tool drive:	DIN 5480
	Shank size [mm]:	25.00
	Shank type:	VDI
	Tool adaption:	ER 25
	Gear ratio [i]:	1:1
	Torque max [Nm]:	16
	Rotation max [1/min]:	6000
	Rotating direction:	opposite
	Coolant:	IC/Ext
	Pressure max [bar]:	140
	Center distance [mm]:	75
8 030 25 101	Radial drilling and milling head ER 25 IC	
	Version:	right
	Tool drive:	DIN 5480
	Shank size [mm]:	25.00
	Shank type:	VDI
	Tool adaption:	ER 25
	Gear ratio [i]:	1:1
	Torque max [Nm]:	16
	Rotation max [1/min]:	6000
	Rotating direction:	opposite
	Coolant:	IC/Ext
	Pressure max [bar]:	140
	Center distance [mm]:	75

Part-#	Name
--------	------

8 030 25 141 Radial drilling and milling head ER 25 AS IC
 Weight [kg]: 3.580
 Version: left
 Tool drive: DIN 5480
 Shank size [mm]: 25.00
 Shank type: VDI
 Tool adaption: ER 25 A
 Gear ratio [i]: 1:1
 Torque max [Nm]: 16
 Rotation max [1/min]: 6000
 Rotating direction: opposite
 Coolant: IC/Ext
 Pressure max [bar]: 25
 Please note: stronger bearing
 Center distance [mm]: 75

8 030 26 017 Radial drilling and milling head HT 4
 Version: left
 Tool drive: DIN 5480
 Shank size [mm]: 25.00
 Shank type: VDI
 Tool adaption: HT 4
 Gear ratio [i]: 1:1
 Torque max [Nm]: 16
 Rotation max [1/min]: 6000
 Rotating direction: opposite
 Coolant: EXT
 Center distance [mm]: 75



8 030 26 019 Radial drilling and milling head HT 4
 Weight [kg]: 3.040
 Version: right
 Tool drive: DIN 5480
 Shank size [mm]: 25.00
 Shank type: VDI
 Tool adaption: HT 4
 Gear ratio [i]: 1:1
 Torque max [Nm]: 16
 Rotation max [1/min]: 6000
 Rotating direction: opposite
 Coolant: EXT
 Center distance [mm]: 75

8 033 24 014 Radial drilling and milling head ER 20
 Weight [kg]: 3.500
 Notation: 180° reversible; offset
 Tool drive: DIN 5480
 Shank size [mm]: 25.00
 Shank type: VDI
 Tool adaption: ER 20
 Gear ratio [i]: 1:1
 Torque max [Nm]: 16
 Rotation max [1/min]: 6000
 Rotating direction: same
 Coolant: EXT
 Center distance [mm]: 75

Part-#	Name	
8 033 25 025	Radial drilling and milling head ER 25	
	Weight [kg]:	3.620
	Notation:	offset
	Employment for:	Main spindle
	Version:	left
	Tool drive:	DIN 5480
	Shank size [mm]:	25.00
	Shank type:	VDI
	Tool adaption:	ER 25
	Gear ratio [i]:	1:1
	Torque max [Nm]:	16
	Rotation max [1/min]:	6000
	Rotating direction:	same
	Coolant:	EXT
	Please note:	reversible in right and left version
	Center distance [mm]:	75
8 033 25 026	Radial drilling and milling head ER 25	
	Weight [kg]:	3.620
	Notation:	offset
	Employment for:	Sub spindle
	Version:	right
	Tool drive:	DIN 5480
	Shank size [mm]:	25.00
	Shank type:	VDI
	Tool adaption:	ER 25
	Gear ratio [i]:	1:1
	Torque max [Nm]:	16
	Rotation max [1/min]:	6000
	Rotating direction:	same
	Coolant:	EXT
	Please note:	Reversible in right and left version
	Center distance [mm]:	75
8 036 25 022	Radial drilling and milling head ER 25 AX UT IC	
	Weight [kg]:	3.610
	Version:	doubletoothed
	Tool drive:	DIN 5480
	Shank size [mm]:	25.00
	Shank type:	VDI
	Tool adaption:	ER 25 A - u-tec
	Gear ratio [i]:	1:1
	Torque max [Nm]:	25
	Rotation max [1/min]:	8000
	Rotating direction:	opposite
	Coolant:	IC/Ext
	Pressure max [bar]:	140
	Please note:	stronger bearing
	Center distance [mm]:	75
8 036 26 040	Radial drilling and milling head HT 4	
	Version:	doubletoothed
	Tool drive:	Flat (~DIN 1809)
	Shank size [mm]:	25.00
	Shank type:	VDI
	Tool adaption:	HT 4
	Gear ratio [i]:	1:1
	Torque max [Nm]:	25


Part-#	Name	
	Rotation max [1/min]:	6000
	Rotating direction:	opposite
	Coolant:	EXT
	Please note:	Fixation slide stone
	Center distance [mm]:	75
8 039 24 015	Radial drilling and milling head ER 20	
	Version:	double spindle
	Tool drive:	DIN 5480
	Shank size [mm]:	25.00
	Shank type:	VDI
	Tool adaption:	ER 20
	Gear ratio [i]:	1:1
	Torque max [Nm]:	16
	Rotation max [1/min]:	6000
	Rotating direction:	same/opposite
	Coolant:	EXT
	Center distance [mm]:	75
8 040 23 009	Universal head ± 90° adjustable ER 11 AX	
	Tool drive:	DIN 5480
	Shank size [mm]:	25.00
	Shank type:	VDI
	Tool adaption:	ER 11 A
	Gear ratio [i]:	1:1
	Torque max [Nm]:	10
	Rotation max [1/min]:	5000
	Rotating direction:	same
	Coolant:	EXT
	Please note:	note useable swivel range!
	Center distance [mm]:	70
8 040 23 010	Universal head ± 90° adjustable ER 11 AX	
	Weight [kg]:	2.150
	Tool drive:	DIN 5480
	Shank size [mm]:	25.00
	Shank type:	VDI
	Tool adaption:	ER 11 A
	Gear ratio [i]:	1:1
	Torque max [Nm]:	10
	Rotation max [1/min]:	5000
	Rotating direction:	same
	Coolant:	EXT
	Please note:	note useable swivel range!
	Center distance [mm]:	55
8 040 24 021	Universal head ± 90° adjustable ER 16	
	Weight [kg]:	2.500
	Version:	right
	Tool drive:	DIN 5480
	Shank size [mm]:	25.00
	Shank type:	VDI
	Tool adaption:	ER 16
	Gear ratio [i]:	1:1
	Torque max [Nm]:	10
	Rotation max [1/min]:	5000
	Rotating direction:	same
	Coolant:	EXT


Part-#	Name	
	Please note:	note useable swivel range!
	Center distance [mm]:	70
8 040 24 022	Universal head ± 90° adjustable ER 16	
	Weight [kg]:	2.140
	Version:	right
	Tool drive:	DIN 5480
	Shank size [mm]:	25.00
	Shank type:	VDI
	Tool adaption:	ER 16
	Gear ratio [i]:	1:1
	Torque max [Nm]:	10
	Rotation max [1/min]:	6000
	Rotating direction:	same
	Coolant:	EXT
	Please note:	note useable swivel range!
	Center distance [mm]:	55
8 040 24 062	Universal head ± 90° adjustable ER 16 AX UT IC	
	Weight [kg]:	4.410
	Tool drive:	DIN 5480
	Shank size [mm]:	25.00
	Shank type:	VDI
	Tool adaption:	ER 16 A - u-tec
	Gear ratio [i]:	1:2
	Torque max [Nm]:	12
	Rotation max [1/min]:	12000
	Rotating direction:	opposite
	Coolant:	IC/Ext
	Pressure max [bar]:	140
	Center distance [mm]:	87
8 040 24 093	Universal head ± 90° adjustable ER 16 AX UT	
	Tool drive:	DIN 5480
	Shank size [mm]:	25.00
	Shank type:	VDI
	Tool adaption:	ER 16 A - u-tec
	Gear ratio [i]:	1:2
	Torque max [Nm]:	12
	Rotation max [1/min]:	12000
	Rotating direction:	opposite
	Coolant:	EXT
	Center distance [mm]:	87
8 202 20 011	Basic holder longitudinal seat FN 12	
	Weight [kg]:	0.800
	Version:	universal
	Shank size [mm]:	25.00
	Shank type:	VDI
	Tool adaption:	Interface FN 12
	Coolant:	EXT
8 209 21 005	Adapter for VDI 20	
	Version:	left
	Shank size [mm]:	25.00
	Shank type:	VDI
	Tool adaption:	DIN 69880 - 20
	Center distance [mm]:	75

Part-#	Name	
8 209 22 012	Adapter for VDI 25	
	Version:	right
	Shank size [mm]:	25.00
	Shank type:	VDI
	Tool adaption:	DIN 69880 - 25
	Center distance [mm]:	75
8 209 22 013	Adapter for VDI 25	
	Weight [kg]:	2.430
	Version:	left
	Shank size [mm]:	25.00
	Shank type:	VDI
	Tool adaption:	DIN 69880 - 25
	Coolant:	EXT
	Center distance [mm]:	75
8 209 22 014	Adapter for VDI 25	
	Notation:	offset
	Version:	right
	Shank size [mm]:	25.00
	Shank type:	VDI
	Tool adaption:	DIN 69880 - 25
	Center distance [mm]:	75
8 209 22 015	Adapter for VDI 25	
	Weight [kg]:	2.920
	Notation:	offset
	Version:	left
	Shank size [mm]:	25.00
	Shank type:	VDI
	Tool adaption:	DIN 69880 - 25
	Center distance [mm]:	75
8 215 22 002	Tool holder C4-25x20/16	
	Version:	left
	Shank size [mm]:	25.00
	Shank type:	VDI
	Tool adaption:	Sq. 20/16
	Coolant:	EXT
8 215 22 003	Tool holder C2-25x20/16	
	Weight [kg]:	1.140
	Version:	left
	Shank size [mm]:	25.00
	Shank type:	VDI
	Tool adaption:	Sq. 20/16
	Coolant:	EXT
8 216 22 000	Tool holder C1/C4-25x20/16	
	Weight [kg]:	1.150
	Employment for:	VDI 25
	Version:	doubletoothed
	Shank size [mm]:	25.00
	Shank type:	VDI
	Tool adaption:	Sq. 20/16
	Coolant:	EXT


Part-#	Name	
8 230 24 002	Collet chuck holder ER 20	
	Notation:	offset
	Version:	right
	Shank size [mm]:	25.00
	Shank type:	VDI
	Tool adaption:	ER 20
	Coolant:	IC/Ext
	Center distance [mm]:	75
8 230 25 008	Collet chuck holder ER 25	
	Version:	right
	Shank size [mm]:	25.00
	Shank type:	VDI
	Tool adaption:	ER 25
	Coolant:	IC/Ext
	Please note:	demountable in left version
	Center distance [mm]:	75
8 230 25 011	Collet chuck holder ER 25	
	Weight [kg]:	3.140
	Notation:	offset
	Version:	right
	Shank size [mm]:	25.00
	Shank type:	VDI
	Tool adaption:	ER 25
	Coolant:	IC/Ext
	Please note:	ER-insert demountable
	Center distance [mm]:	75
8 230 26 016	Collet chuck holder ER 32	
	Weight [kg]:	2.740
	Version:	right, offset
	Shank size [mm]:	25.00
	Shank type:	VDI
	Tool adaption:	ER 32
	Coolant:	IC/Ext
	Center distance [mm]:	75
8 230 26 018	Tool holder HT 4	
	Notation:	offset
	Version:	right
	Shank size [mm]:	25.00
	Shank type:	VDI
	Tool adaption:	HT 4
	Coolant:	IC/Ext
	Please note:	HT- insert demountable
	Center distance [mm]:	75
8 230 27 024	Boring bar holder Ø 25	
	Weight [kg]:	2.860
	Version:	right
	Shank size [mm]:	25.00
	Shank type:	VDI
	Tool adaption:	Ø 25
	Coolant:	IC/Ext
	Please note:	demountable in left version
	Center distance [mm]:	75



Part-#	Name	
8 230 27 041	Boring bar holder Ø 30	
	Weight [kg]:	2.770
	Version:	right
	Shank size [mm]:	25.00
	Shank type:	VDI
	Tool adaption:	Ø 30
	Coolant:	IC/Ext
	Please note:	demountable in left version
	Center distance [mm]:	75
8 230 27 049	Boring bar holder Ø 25	
	Weight [kg]:	3.420
	Version:	right
	Shank size [mm]:	25.00
	Shank type:	VDI
	Tool adaption:	Ø 25
	Coolant:	IC/Ext
	Please note:	demountable in left version
	Center distance [mm]:	95
8 230 27 054	Boring bar holder Ø 1"	
	Weight [kg]:	2.850
	Version:	right
	Shank size [mm]:	25.00
	Shank type:	VDI
	Tool adaption:	Ø 1" (25,4mm)
	Coolant:	IC/Ext
	Please note:	demountable in left version
	Center distance [mm]:	75
8 230 28 019	Boring bar holder Ø 32	
	Notation:	offset
	Version:	right
	Shank size [mm]:	25.00
	Shank type:	VDI
	Tool adaption:	Ø 32
	Coolant:	IC/Ext
	Center distance [mm]:	75
8 231 24 001	Collet chuck holder ER 20	
	Weight [kg]:	2.800
	Notation:	offset
	Version:	left
	Shank size [mm]:	25.00
	Shank type:	VDI
	Tool adaption:	ER 20
	Coolant:	IC/Ext
	Center distance [mm]:	75
8 231 25 004	Collet chuck holder ER 25	
	Weight [kg]:	3.140
	Notation:	offset
	Version:	left
	Shank size [mm]:	25.00
	Shank type:	VDI
	Tool adaption:	ER 25
	Coolant:	IC/Ext

Part-#	Name	
	Center distance [mm]:	75
8 231 26 007	Tool holder HT 4	
	Notation:	offset
	Version:	left
	Shank size [mm]:	25.00
	Shank type:	VDI
	Tool adaption:	HT 4
	Coolant:	IC/Ext
	Please note:	HT- insert demountable
	Center distance [mm]:	75
8 231 28 001	Boring bar holder Ø 32	
	Version:	left
	Shank size [mm]:	25.00
	Shank type:	VDI
	Tool adaption:	Ø 32
	Coolant:	IC/Ext
	Please note:	demountable in right version
	Center distance [mm]:	75
8 231 28 003	Boring bar holder Ø 32	
	Notation:	offset
	Version:	left
	Shank size [mm]:	25.00
	Shank type:	VDI
	Tool adaption:	Ø 32
	Coolant:	IC/Ext
	Center distance [mm]:	75
8 231 28 033	Boring bar holder Ø 32	
	Version:	left
	Shank size [mm]:	25.00
	Shank type:	VDI
	Tool adaption:	Ø 32
	Coolant:	IC/Ext
	Please note:	demountable in right version
	Center distance [mm]:	95
8 234 24 004	Combi facing holder sq. 20	
	Weight [kg]:	2.320
	Shank size [mm]:	25.00
	Shank type:	VDI
	Tool adaption:	Sq. 20
	Coolant:	EXT
	Please note:	demountable in left version
8 236 26 005	Tool holder HT 4	
	Notation:	180° reversible
	Version:	doubletoothed
	Shank size [mm]:	25.00
	Shank type:	VDI
	Tool adaption:	HT 4
	Coolant:	IC/Ext
	Please note:	Fixation slide stone
	Center distance [mm]:	75

Part-#	Name	
8 236 27 014	Boring bar holder Ø 25	
	Version:	doubletoothed
	Shank size [mm]:	25.00
	Shank type:	VDI
	Tool adaption:	Ø 25
	Coolant:	IC/Ext
	Pressure max [bar]:	100
	Center distance [mm]:	95
8 239 26 029	Double tool holder HT 4	
	Weight [kg]:	2.840
	Employment for:	Main- and sub spindle
	Shank size [mm]:	25.00
	Shank type:	VDI
	Tool adaption:	HT 4
	Coolant:	IC/Ext
	Center distance [mm]:	75
8 251 23 003	Combi double turning holder sq.20/16	
	Weight [kg]:	1.920
	Employment for:	Main- and sub spindle
	Shank size [mm]:	25.00
	Shank type:	VDI
	Tool adaption:	Sq. 20/16
	Coolant:	EXT
	Please note:	usable as C1, C2, C3, C4
8 253 25 001	Double boring bar holder Ø 16	
	Weight [kg]:	4.900
	Shank size [mm]:	25.00
	Shank type:	VDI
	Tool adaption:	Ø 16
	Coolant:	IC/Ext
	Center distance [mm]:	70/105
8 253 26 010	Multiple tool holder HT 4	
	Weight [kg]:	4.580
	Version:	Special; double spindle
	Shank size [mm]:	25.00
	Shank type:	VDI
	Tool adaption:	HT 4 HT 4 HT 4 HT 4
	Coolant:	IC/Ext
	Please note:	Check applicability; tool height 132,5 mm
	Center distance [mm]:	70/112
8 253 26 011	Double tool holder HT 4	
	Weight [kg]:	4.550
	Version:	Special
	Shank size [mm]:	25.00
	Shank type:	VDI
	Tool adaption:	HT 4 HT 4
	Coolant:	IC/Ext
	Please note:	Check applicability; tool height 132,5 mm
	Center distance [mm]:	70/112

Part-#	Name	
8 253 27 008	Double boring bar holder Ø 25	
	Weight [kg]:	4.430
	Shank size [mm]:	25.00
	Shank type:	VDI
	Tool adaption:	Ø 25
	Coolant:	IC/Ext
	Center distance [mm]:	70/105
8 262 29 006	Stock stop VDI 25 - Ø 60 OD turret	
	Weight [kg]:	2.740
	Notation:	rotating
	Version:	left
	Shank size [mm]:	25.00
	Shank type:	VDI
	Rotation max [1/min]:	8000
	Coolant:	no
	Please note:	Lenght adjustable
	Center distance [mm]:	75
8 262 29 015	Stock stop VDI 25 - Ø 60 OD turret	
	Weight [kg]:	2.730
	Notation:	offset
	Version:	right
	Shank size [mm]:	25.00
	Shank type:	VDI
	Rotation max [1/min]:	8000
	Coolant:	no
	Please note:	Lenght adjustable
	Center distance [mm]:	75

heimatec.u-tec®

heimatec.com

Products / Tool change systems /
u-tec® Tool-changing system



versions see catalog



heimatec.easy-quick

heimatec.com

Products / Tool change systems /
easy-quick HT quick-changing system



versions see catalog



heimatec.Capto™

heimatec.com

Products / Tool change systems /
heimatec.Capto™ quick-changing system



versions see catalog



heimatec.accessories

heimatec.com

Products / Accessories



versions see catalog





● heimatec overseas branches

○ global representations of heimatec

heimatec[®]

heimatec GmbH
Präzisionswerkzeuge
Carl-Benz-Str. 4
77871 Renchen
Germany

T +49 7843 9466 0
www.heimatec.com
info@heimatec.com

Please find the contact details of our worldwide trading partners on our website:
<https://heimatec.com/business-partners>