

**TOPSELLER -**  
many more available!

Live Tools

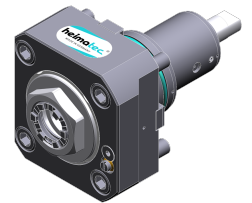
**heimatec**®

# Samsung

## SL 2000 ASY - BMT 55

| Part-#   | Tool adaption          | Rotation max [1/min] | Gear ratio | Coolant | Pressure max. | Center distance |
|--|------------------------|----------------------|------------|---------|---------------|-----------------|
| <b>Axial drilling and milling head</b>         |                        |                      |            |         |               |                 |
| 8 010 55 038                                   | <b>ER 25 A - u-tec</b> | 6.000                | 1:1        | IC/Ext  | 25 bar        | --              |
| 8 010 55 039                                   | <b>ER 25 A - u-tec</b> | 12.000               | 1:1        | EXT     | 140 bar       | --              |
| <b>Axial drilling and milling head, offset</b> |                        |                      |            |         |               |                 |
| 8 019 55 054                                   | <b>ER 25 A - u-tec</b> | 6.000                | 1:1        | IC/Ext  | 140 bar       | --              |
| <b>Radial drilling and milling head</b>        |                        |                      |            |         |               |                 |
| 8 030 55 175                                   | <b>ER 25 A - u-tec</b> | 12.000               | 1:1        | EXT     | --            | <b>60 mm</b>    |
| 8 030 55 176                                   | <b>ER 25 A - u-tec</b> | 12.000               | 1:1        | IC/Ext  | 140 bar       | <b>60 mm</b>    |
| 8 030 55 102                                   | <b>ER 25 A - u-tec</b> | 12.000               | 1:1        | EXT     | --            | <b>70 mm</b>    |

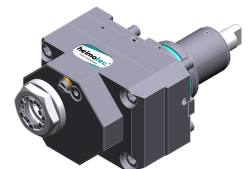
Illustrations similar.



8 010 55 038



8 010 55 039



8 019 55 054



8 030 55 175



8 030 55 176

**TOPSELLER -**  
many more available!

Static Tools

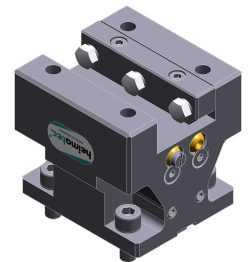
**heimatec**®

# Samsung

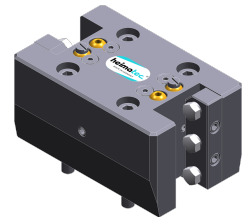
## SL 2000 ASY - BMT 55

| Part-#                                   | Tool adaption           | Coolant | Pressure max. |
|--|-------------------------|---------|---------------|
| <b>Combi facing holder</b>               |                         |         |               |
| 8 244 05 003                             | <b>Sq. 25</b>           | EXT     | 80 bar        |
| <b>Double turning holder</b>             |                         |         |               |
| 8 251 05 001                             | <b>Sq. 25</b>           | EXT     | 80 bar        |
| <b>Double boring bar holder</b>          |                         |         |               |
| 8 253 07 011                             | <b>Ø 25</b>             | IC/Ext  | 80 bar        |
| 8 253 07 047                             | <b>Ø 25</b>             | IC/Ext  | --            |
| 8 253 08 002                             | <b>Ø 32</b>             | IC/Ext  | --            |
| <b>Multiple boring bar holder</b>        |                         |         |               |
| 8 253 07 042                             | <b>Ø 1"</b>             | IC/Ext  | --            |
| <b>Multiple turning holder</b>           |                         |         |               |
| 8 259 04 007                             | <b>Sq. 20</b>           | IC/Ext  | --            |
| <b>Cut-off holder, height adjustable</b> |                         |         |               |
| 8 320 03 025                             | <b>Clampshaft SH 32</b> | IC/Ext  | 70 bar        |

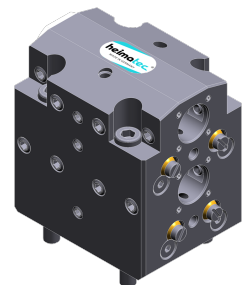
*Illustrations similar.*



8 244 05 003



8 251 05 001



8 253 07 011



8 253 07 042