

Hyundai-WIA
LM 1800 TT
serie



High-tech from heimatec - heimatec - Tools and systems for productive turning and milling

heimatec belongs to the international technology and quality leaders for precision tools and specializes in the development and production of high-precision static and live tools for all CNC lathes, CNC turn-/mill machines and CNC machining centers.

The range of products* spans from static BMT and VDI tool holders, live tools up to highly complex customer-specific individual solutions. heimatec, headquartered in Renchen, has a own subsidiary in Asia and India and numerous representatives as well as trading partners all over the world.

*OUR PRODCUTS

Static tool holders

Live tool units

Precision tools

Tools for turning and machining centres

Tools for swiss type lathes

Tool changing and uick-change systems

Tool systems for gear production

Digital tool management

This catalogue, including all its parts, is protected by copyright. Any use outside the restricted limitations of the Copyright Act without the consent of heimatec is inadmissible and liable to prosecution. This applies in particular to duplication, translation, microfilming and storage and processing in electronic systems.

heimatec GmbH reserves the right to make technical changes at any time without giving prior notice. This applies in particular to adjustments at any time to meet new or changed international standards, or in case of further developments of our products or manufacturing processes.

The current version of our General Terms and Conditions can be found on our website.

Part-#	Name	
8 010 55 038	Axial drilling and milling head ER 25 AX UT IC	
	Weight [kg]:	3.050
	Tool drive:	Flat (~DIN 1809)
	Shank size [mm]:	55.00
	Shank type:	BMT
	Tool adaption:	ER 25 A - u-tec
	Gear ratio [i]:	1:1
	Torque max [Nm]:	50
	Rotation max [1/min]:	6000
	Rotating direction:	same
	Coolant:	IC/Ext
	Pressure max [bar]:	25
	Please note:	Combi bearing
8 010 55 039	Axial drilling and milling head ER 25 AX UT	
	Notation:	180° reversible
	Tool drive:	Flat (~DIN 1809)
	Shank size [mm]:	55.00
	Shank type:	BMT
	Tool adaption:	ER 25 A - u-tec
	Gear ratio [i]:	1:1
	Torque max [Nm]:	50
	Rotation max [1/min]:	12000
	Rotating direction:	same
	Coolant:	EXT
	Pressure max [bar]:	140
8 010 55 051	Axial drilling and milling head Weldon 3/4"	
	Weight [kg]:	3.390
	Tool drive:	Flat (~DIN 1809)
	Shank size [mm]:	55.00
	Shank type:	BMT
	Tool adaption:	Weldon (DIN 1835 b) 3/4" (19,05mm)
	Gear ratio [i]:	1:1
	Torque max [Nm]:	50
	Rotation max [1/min]:	6000
	Rotating direction:	same
	Coolant:	EXT
	Please note:	Combi bearing
8 010 55 120	Axial drilling and milling head ER 25 AX UT	
	Weight [kg]:	3.190
	Tool drive:	Flat (~DIN 1809)
	Shank size [mm]:	55.00
	Shank type:	BMT
	Tool adaption:	ER 25 A - u-tec
	Gear ratio [i]:	1:1
	Torque max [Nm]:	50
	Rotation max [1/min]:	8000
	Rotating direction:	same
	Coolant:	EXT

Part-#	Name	
8 010 56 035	Axial drilling and milling head HT 4 IC	
	Tool drive:	Flat (~DIN 1809)
	Shank size [mm]:	55.00
	Shank type:	BMT
	Tool adaption:	HT 4
	Gear ratio [i]:	1:1
	Torque max [Nm]:	50
	Rotation max [1/min]:	6000
	Rotating direction:	same
	Coolant:	IC/Ext
	Pressure max [bar]:	25
	Please note:	stronger bearing
8 010 56 039	Axial drilling and milling head ER 32 AX UT	
	Weight [kg]:	3.200
	Tool drive:	Flat (~DIN 1809)
	Shank size [mm]:	55.00
	Shank type:	BMT
	Tool adaption:	ER 32 A - u-tec
	Gear ratio [i]:	1:1
	Torque max [Nm]:	50
	Rotation max [1/min]:	6000
	Rotating direction:	same
	Coolant:	EXT
	Please note:	Combi bearing
8 010 56 040	Axial drilling and milling head ER 32 AX UT IC	
	Weight [kg]:	3.220
	Tool drive:	Flat (~DIN 1809)
	Shank size [mm]:	55.00
	Shank type:	BMT
	Tool adaption:	ER 32 A - u-tec
	Gear ratio [i]:	1:1
	Torque max [Nm]:	50
	Rotation max [1/min]:	6000
	Rotating direction:	same
	Coolant:	IC/Ext
	Pressure max [bar]:	25
	Please note:	Combi bearing
8 010 56 047	Axial drilling and milling head HT 4 IC	
	Tool drive:	Flat (~DIN 1809)
	Shank size [mm]:	55.00
	Shank type:	BMT
	Tool adaption:	HT 4
	Gear ratio [i]:	1:1
	Torque max [Nm]:	50
	Rotation max [1/min]:	6000
	Rotating direction:	same
	Coolant:	IC/Ext
	Pressure max [bar]:	25
	Please note:	Combi bearing

Part-#	Name
--------	------

8 010 56 119

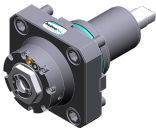
Axial drilling and milling head C 4 IC



Notation: 180° reversible
 Tool drive: Flat (~DIN 1809)
 Shank size [mm]: 55.00
 Shank type: BMT
 Tool adaption: heimatec Capto(TM) C 4
 Gear ratio [i]: 1:1
 Torque max [Nm]: 50
 Rotation max [1/min]: 6000
 Rotating direction: same
 Coolant: IC/Ext
 Pressure max [bar]: 100
 Please note: Check applicability; tool length check !;

8 013 54 008

Axial drilling and milling head ER 16 AX UT



Weight [kg]: 2.480
 Tool drive: Flat (~DIN 1809)
 Shank size [mm]: 55.00
 Shank type: BMT
 Tool adaption: ER 16 A - u-tec
 Gear ratio [i]: 1:4
 Torque max [Nm]: 5
 Rotation max [1/min]: 24000
 Rotating direction: same
 Coolant: EXT

8 013 54 009

Axial drilling and milling head ER 16 AX UT IC



Tool drive: Flat (~DIN 1809)
 Shank size [mm]: 55.00
 Shank type: BMT
 Tool adaption: ER 16 A - u-tec
 Gear ratio [i]: 1:4
 Torque max [Nm]: 5
 Rotation max [1/min]: 24000
 Rotating direction: same
 Coolant: IC/Ext
 Pressure max [bar]: 100

8 019 55 050

Axial drilling and milling head ER 25 AX UT



Weight [kg]: 5.000
 Notation: offset; 180° reversible
 Tool drive: Flat (~DIN 1809)
 Shank size [mm]: 55.00
 Shank type: BMT
 Tool adaption: ER 25 A - u-tec
 Gear ratio [i]: 1:1
 Torque max [Nm]: 40
 Rotation max [1/min]: 8000
 Rotating direction: opposite
 Coolant: EXT
 Please note: stronger bearing
 Offset [mm]: 42

Part-#	Name
--------	------

8 019 55 051



Axial drilling and milling head ER 25 AX UT

Weight [kg]: 5.010
 Notation: offset; 180° reversible
 Tool drive: Flat (~DIN 1809)
 Shank size [mm]: 55.00
 Shank type: BMT
 Tool adaption: ER 25 A - u-tec
 Gear ratio [i]: 2:1
 Torque max [Nm]: 50
 Rotation max [1/min]: 3000
 Rotating direction: opposite
 Coolant: EXT
 Please note: stronger bearing
 Offset [mm]: 42

8 019 55 052



Axial drilling and milling head ER 25 AX UT

Weight [kg]: 5.020
 Notation: offset; 180° reversible
 Tool drive: Flat (~DIN 1809)
 Shank size [mm]: 55.00
 Shank type: BMT
 Tool adaption: ER 25 A - u-tec
 Gear ratio [i]: 1:3
 Torque max [Nm]: 16
 Rotation max [1/min]: 18000
 Rotating direction: opposite
 Coolant: EXT
 Please note: stronger bearing
 Offset [mm]: 42

8 019 55 053



Axial drilling and milling head ER 25 AX UT

Weight [kg]: 4.980
 Notation: offset; 180° reversible
 Tool drive: Flat (~DIN 1809)
 Shank size [mm]: 55.00
 Shank type: BMT
 Tool adaption: ER 25 A - u-tec
 Gear ratio [i]: 1:2
 Torque max [Nm]: 25
 Rotation max [1/min]: 16000
 Rotating direction: opposite
 Coolant: EXT
 Please note: stronger bearing
 Offset [mm]: 42

8 019 55 054



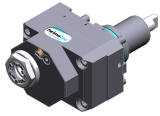
Axial drilling and milling head ER 25 AX UT IC

Notation: offset; 180° reversible
 Tool drive: Flat (~DIN 1809)
 Shank size [mm]: 55.00
 Shank type: BMT
 Tool adaption: ER 25 A - u-tec
 Gear ratio [i]: 1:1
 Torque max [Nm]: 40
 Rotation max [1/min]: 6000
 Rotating direction: opposite
 Coolant: IC/Ext

Part-#	Name
--------	------

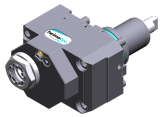
Pressure max [bar]: 140
Please note: stronger bearing
Offset [mm]: 42

8 019 55 056 Axial drilling and milling head ER 25 AX UT IC



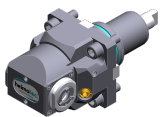
Weight [kg]: 6.130
Notation: offset; 180° reversible
Tool drive: Flat (~DIN 1809)
Shank size [mm]: 55.00
Shank type: BMT
Tool adaption: ER 25 A - u-tec
Gear ratio [i]: 1:3
Torque max [Nm]: 16
Rotation max [1/min]: 18000
Rotating direction: opposite
Coolant: IC/Ext
Pressure max [bar]: 140
Please note: stronger bearing
Offset [mm]: 42

8 019 55 057 Axial drilling and milling head ER 25 AX UT IC



Weight [kg]: 6.060
Notation: offset; 180° reversible
Tool drive: Flat (~DIN 1809)
Shank size [mm]: 55.00
Shank type: BMT
Tool adaption: ER 25 A - u-tec
Gear ratio [i]: 1:2
Torque max [Nm]: 25
Rotation max [1/min]: 16000
Rotating direction: opposite
Coolant: IC/Ext
Pressure max [bar]: 140
Please note: stronger bearing
Offset [mm]: 42

8 030 54 079 Radial drilling and milling head ER 16 AX UT



Weight [kg]: 4.200
Notation: 180° reversible
Tool drive: Flat (~DIN 1809)
Shank size [mm]: 55.00
Shank type: BMT
Tool adaption: ER 16 A - u-tec
Gear ratio [i]: 1:1
Torque max [Nm]: 10
Rotation max [1/min]: 6000
Rotating direction: opposite
Coolant: EXT
Center distance [mm]: 70

Part-#	Name
--------	------

8 030 55 093



Angle-mill- and drill holder ER 25 AX UT

Notation:	180° reversible
Tool drive:	Flat (~DIN 1809)
Shank size [mm]:	55.00
Shank type:	BMT
Tool adaption:	ER 25 A - u-tec
Gear ratio [i]:	1:1
Torque max [Nm]:	50
Rotation max [1/min]:	5000
Rotating direction:	same
Coolant:	EXT
Please note:	Combi bearing
Center distance [mm]:	85

8 030 55 143



Radial drilling and milling head ER 25 AX UT

Notation:	180° reversible
Tool drive:	Flat (~DIN 1809)
Shank size [mm]:	55.00
Shank type:	BMT
Tool adaption:	ER 25 A - u-tec
Gear ratio [i]:	1:3
Torque max [Nm]:	12
Rotation max [1/min]:	18000
Rotating direction:	same
Coolant:	EXT
Please note:	stronger bearing
Center distance [mm]:	85

8 030 55 156



Radial drilling and milling head ER 25 AX UT IC

Weight [kg]:	6.820
Notation:	180° reversible
Version:	Special
Tool drive:	Flat (~DIN 1809)
Shank size [mm]:	55.00
Shank type:	BMT
Tool adaption:	ER 25 A - u-tec
Gear ratio [i]:	1:2
Torque max [Nm]:	16
Rotation max [1/min]:	12000
Rotating direction:	same
Coolant:	IC
Pressure max [bar]:	140
Please note:	stronger bearing
Center distance [mm]:	85

8 030 55 184



Radial drilling and milling head ER 25 AX UT IC

Weight [kg]:	6.830
Notation:	180° reversible
Tool drive:	Flat (~DIN 1809)
Shank size [mm]:	55.00
Shank type:	BMT
Tool adaption:	ER 25 A - u-tec
Gear ratio [i]:	1:3
Torque max [Nm]:	12
Rotation max [1/min]:	18000
Rotating direction:	same

Part-#	Name
--------	------

Coolant: IC/Ext
 Pressure max [bar]: 140
 Please note: stronger bearing
 Center distance [mm]: 85

8 030 55 255 Radial drilling and milling head ER 25 AX UT



Weight [kg]: 7.600
 Notation: 180° reversible
 Tool drive: Flat (~DIN 1809)
 Shank size [mm]: 55.00
 Shank type: BMT
 Tool adaption: ER 25 A - u-tec
 Gear ratio [i]: 1:1
 Torque max [Nm]: 50
 Rotation max [1/min]: 12000
 Rotating direction: same
 Coolant: EXT
 Center distance [mm]: 85

8 030 55 256 Radial drilling and milling head ER 25 AX UT IC



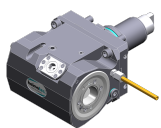
Weight [kg]: 8.200
 Notation: 180° reversible
 Tool drive: Flat (~DIN 1809)
 Shank size [mm]: 55.00
 Shank type: BMT
 Tool adaption: ER 25 A - u-tec
 Gear ratio [i]: 1:1
 Torque max [Nm]: 50
 Rotation max [1/min]: 12000
 Rotating direction: same
 Coolant: IC/Ext
 Pressure max [bar]: 140
 Center distance [mm]: 85

8 030 56 173 Radial drilling and milling head ER 32 AX UT



Notation: 180° reversible
 Tool drive: Flat (~DIN 1809)
 Shank size [mm]: 55.00
 Shank type: BMT
 Tool adaption: ER 32 A - u-tec
 Gear ratio [i]: 2:1
 Torque max [Nm]: 63
 Rotation max [1/min]: 6000
 Rotating direction: opposite
 Coolant: EXT
 Please note: Combi bearing
 Center distance [mm]: 85

8 030 56 186 Radial drilling and milling head C 4

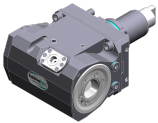


Weight [kg]: 10.200
 Notation: 180° reversible
 Tool drive: Flat (~DIN 1809)
 Shank size [mm]: 55.00
 Shank type: BMT
 Tool adaption: heimatec Capto(TM) C 4
 Gear ratio [i]: 1:1

Part-#	Name
--------	------

Torque max [Nm]: 40
 Rotation max [1/min]: 6000
 Rotating direction: opposite
 Coolant: EXT
 Please note: Check applicability; note tool length!
 Center distance [mm]: 85

8 030 56 187 Radial drilling and milling head C 4 IC



Weight [kg]: 10.440
 Notation: 180° reversible
 Tool drive: Flat (~DIN 1809)
 Shank size [mm]: 55.00
 Shank type: BMT
 Tool adaption: heimatec Capto(TM) C 4
 Gear ratio [i]: 1:1
 Torque max [Nm]: 40
 Rotation max [1/min]: 6000
 Rotating direction: opposite
 Coolant: IC/Ext
 Pressure max [bar]: 140
 Please note: Check applicability; note tool length!
 Center distance [mm]: 85

8 030 56 246 Radial drilling and milling head ER 32 AX UT IC



Weight [kg]: 7.660
 Notation: 180° reversible
 Tool drive: Flat (~DIN 1809)
 Shank size [mm]: 55.00
 Shank type: BMT
 Tool adaption: ER 32 A - u-tec
 Gear ratio [i]: 1:1
 Torque max [Nm]: 50
 Rotation max [1/min]: 12000
 Rotating direction: same
 Coolant: IC/Ext
 Pressure max [bar]: 140
 Center distance [mm]: 85

8 030 56 247 Radial drilling and milling head ER 32 AX UT

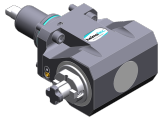


Weight [kg]: 7.550
 Notation: 180° reversible
 Tool drive: Flat (~DIN 1809)
 Shank size [mm]: 55.00
 Shank type: BMT
 Tool adaption: ER 32 A - u-tec
 Gear ratio [i]: 1:1
 Torque max [Nm]: 50
 Rotation max [1/min]: 12000
 Rotating direction: same
 Coolant: EXT
 Center distance [mm]: 85

Part-#	Name
--------	------

8 031 55 022

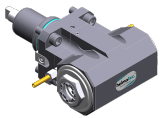
Radial milling head universal arbor 22



Weight [kg]: 8.100
 Notation: 180° reversible
 Tool drive: Flat (~DIN 1809)
 Shank size [mm]: 55.00
 Shank type: BMT
 Tool adaption: Universal arbor 22
 Gear ratio [i]: 2:1
 Torque max [Nm]: 63
 Rotation max [1/min]: 3000
 Rotating direction: opposite
 Coolant: EXT
 Please note: Combi bearing
 Center distance [mm]: 85

8 039 55 026

Radial drilling and milling head ER 25 AX UT



Weight [kg]: 7.000
 Notation: 180° reversible
 Employment for: Main- and sub spindle
 Version: double spindle
 Tool drive: Flat (~DIN 1809)
 Shank size [mm]: 55.00
 Shank type: BMT
 Tool adaption: ER 25 A - u-tec
 Gear ratio [i]: 1:1
 Torque max [Nm]: 50
 Rotation max [1/min]: 12000
 Rotating direction: same/opposite
 Coolant: EXT
 Please note: stronger bearing
 Center distance [mm]: 85

8 039 56 029

Radial drilling and milling head ER 32 AX UT





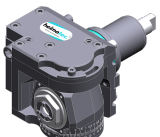
Weight [kg]: 6.840
 Notation: 180° reversible
 Employment for: Main- and sub spindle
 Version: double spindle
 Tool drive: Flat (~DIN 1809)
 Shank size [mm]: 55.00
 Shank type: BMT
 Tool adaption: ER 32 A - u-tec
 Gear ratio [i]: 1:1
 Torque max [Nm]: 50
 Rotation max [1/min]: 12000
 Rotating direction: same/opposite
 Coolant: EXT
 Please note: stronger bearing
 Center distance [mm]: 85

8 039 56 045

Radial drilling and milling head ER 32 AX UT



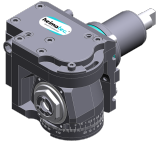
Weight [kg]: 8.600
 Notation: 180° reversible
 Employment for: Main- and sub spindle
 Version: double spindle
 Tool drive: Flat (~DIN 1809)
 Shank size [mm]: 55.00

Part-#	Name	
	Shank type:	BMT
	Tool adaption:	ER 32 A - u-tec
	Gear ratio [i]:	1:1
	Torque max [Nm]:	50
	Rotation max [1/min]:	6000
	Rotating direction:	same/opposite
	Coolant:	EXT
	Please note:	stronger bearing
	Center distance [mm]:	100
8 040 54 023	Universal head ± 90° adjustable ER 16 AX UT IC	
	Weight [kg]:	5.770
	Notation:	180° reversible
	Tool drive:	Flat (~DIN 1809)
	Shank size [mm]:	55.00
	Shank type:	BMT
	Tool adaption:	ER 16 A - u-tec
	Gear ratio [i]:	1:1
	Torque max [Nm]:	25
	Rotation max [1/min]:	6000
	Rotating direction:	opposite
	Coolant:	IC/Ext
	Pressure max [bar]:	140
	Center distance [mm]:	90
8 040 55 022	Universal head ± 90° adjustable ER 25 AX UT	
	Weight [kg]:	5.930
	Notation:	180° reversible
	Version:	Special
	Tool drive:	Flat (~DIN 1809)
	Shank size [mm]:	55.00
	Shank type:	BMT
	Tool adaption:	ER 25 A - u-tec
	Gear ratio [i]:	1:1
	Torque max [Nm]:	25
	Rotation max [1/min]:	6000
	Rotating direction:	opposite
	Coolant:	EXT
	Center distance [mm]:	90
8 043 54 006	Universal head +110°/-20° adj. ER16 AX UT	
	Weight [kg]:	5.940
	Notation:	offset; 180° reversible
	Tool drive:	Flat (~DIN 1809)
	Shank size [mm]:	55.00
	Shank type:	BMT
	Tool adaption:	ER 16 A - u-tec
	Gear ratio [i]:	1:1
	Torque max [Nm]:	25
	Rotation max [1/min]:	6000
	Rotating direction:	opposite
	Coolant:	EXT
	Center distance [mm]:	50
	Offset [mm]:	35

Part-#	Name
--------	------

8 043 54 013

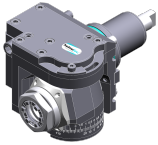
Universal head +110°/-20° adj. ER16 AX UT



Weight [kg]: 6.320
 Notation: offset; 180° reversible
 Tool drive: Flat (~DIN 1809)
 Shank size [mm]: 55.00
 Shank type: BMT
 Tool adaption: ER 16 A - u-tec
 Gear ratio [i]: 1:2
 Torque max [Nm]: 12
 Rotation max [1/min]: 12000
 Rotating direction: opposite
 Coolant: EXT
 Center distance [mm]: 50
 Offset [mm]: 35

8 043 55 005

Universal head +110°/-20° adj. ER25 AX UT



Weight [kg]: 6.170
 Notation: offset, 180° reversible
 Tool drive: Flat (~DIN 1809)
 Shank size [mm]: 55.00
 Shank type: BMT
 Tool adaption: ER 25 A - u-tec
 Gear ratio [i]: 1:1
 Torque max [Nm]: 25
 Rotation max [1/min]: 6000
 Rotating direction: opposite
 Coolant: EXT
 Please note: stronger bearing
 Center distance [mm]: 50
 Offset [mm]: 35

8 043 55 009

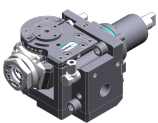
Universal head +110°/-20° adj. ER25AX UTIK



Weight [kg]: 6.320
 Notation: offset, 180° reversible
 Tool drive: Flat (~DIN 1809)
 Shank size [mm]: 55.00
 Shank type: BMT
 Tool adaption: ER 25 A - u-tec
 Gear ratio [i]: 1:1
 Torque max [Nm]: 25
 Rotation max [1/min]: 6000
 Rotating direction: opposite
 Coolant: IC/Ext
 Pressure max [bar]: 25
 Please note: stronger bearing
 Center distance [mm]: 50
 Offset [mm]: 35



8 043 55 027

Universal head +110°/-20° adj. ER25 AX UT



Weight [kg]: 6.180
 Notation: offset, 180° reversible
 Version: at 45° position can be pinned
 Tool drive: Flat (~DIN 1809)
 Shank size [mm]: 55.00
 Shank type: BMT
 Tool adaption: ER 25 A - u-tec

Part-#	Name	
	Gear ratio [i]:	1:1
	Torque max [Nm]:	25
	Rotation max [1/min]:	6000
	Rotating direction:	opposite
	Coolant:	EXT
	Please note:	stronger bearing
	Center distance [mm]:	50
	Offset [mm]:	35
8 053 54 021	Multispindle radial head ER 16 AX UT	
	Weight [kg]:	8.510
	Notation:	180° reversible
	Version:	2-spindles
	Tool drive:	Flat (~DIN 1809)
	Shank size [mm]:	55.00
	Shank type:	BMT
	Tool adaption:	ER 16 A - u-tec
	Gear ratio [i]:	1:1
	Torque max [Nm]:	25
	Rotation max [1/min]:	6000
	Rotating direction:	same
	Coolant:	EXT
	Center distance [mm]:	85
8 053 54 029	Multispindle radial head ER 16 AX UT	
	Weight [kg]:	8.440
	Notation:	180° reversible
	Version:	2-spindles
	Tool drive:	Flat (~DIN 1809)
	Shank size [mm]:	55.00
	Shank type:	BMT
	Tool adaption:	ER 16 A - u-tec
	Gear ratio [i]:	1:2
	Torque max [Nm]:	8
	Rotation max [1/min]:	12000
	Rotating direction:	same
	Coolant:	EXT
	Center distance [mm]:	85
8 200 02 003	Cover plate	
	Weight [kg]:	0.361
	Shank size [mm]:	55.00
	Shank type:	BMT
8 224 03 003	Cut-off holder SH 32	
	Weight [kg]:	1.810
	Notation:	180° reversible
	Employment for:	Cut-off tool 32
	Version:	Clampshaft on turret side
	Shank type:	BMT
	Machine adaption:	Centering key b 15
	Tool adaption:	Clampshaft SH 32
	Coolant:	EXT

Part-#	Name	
8 224 04 002	Universal turning holder sq. 20	
	Weight [kg]:	3.460
	Shank type:	BMT
	Machine adaption:	Centering key b 15
	Tool adaption:	Sq. 20
	Coolant:	EXT
8 224 04 062	Universal turning holder sq. 20 IC	
	Weight [kg]:	3.020
	Shank type:	BMT
	Machine adaption:	Centering key b 15
	Tool adaption:	Sq. 20
		Sq. 20
	Coolant:	IC/Ext
	Pressure max [bar]:	100
	Please note:	Key rail
8 224 05 003	Universal turning holder sq. 25	
	Weight [kg]:	3.620
	Notation:	180° reversible
	Shank type:	BMT
	Machine adaption:	Centering key b 15
	Tool adaption:	Sq. 25
	Coolant:	EXT
8 224 05 005	Universal turning holder sq. 1"	
	Weight [kg]:	3.560
	Shank type:	BMT
	Machine adaption:	Centering key b 15
	Tool adaption:	Sq. 1" (25,4mm)
	Coolant:	EXT
8 224 05 015	Universal turning holder sq. 25/20	
	Weight [kg]:	3.780
	Notation:	180° reversible
	Shank type:	BMT
	Machine adaption:	Centering key b 15
	Tool adaption:	Sq. 25/20
	Coolant:	EXT
	Pressure max [bar]:	80
	Please note:	with spacer strip for sq. 20
8 224 05 023	Universal turning holder sq. 25/20	
	Weight [kg]:	3.150
	Notation:	180° reversible
	Shank type:	BMT
	Machine adaption:	Centering key b 15
	Tool adaption:	Sq. 25/20
	Coolant:	EXT
	Please note:	with spacer strip for sq. 20

Part-#	Name	
8 240 07 043	Boring bar holder Ø 1 1/4"	
	Weight [kg]:	7.540
	Notation:	180° reversible
	Shank type:	BMT
	Machine adaption:	Centering key b 15
	Tool adaption:	Ø 1 1/4" (31,75mm)
	Coolant:	IC/Ext
	Center distance [mm]:	95
8 240 08 061	Boring bar holder Ø 32	
	Weight [kg]:	6.490
	Notation:	180° reversible
	Employment for:	Main- and sub spindle
	Shank type:	BMT
	Machine adaption:	Centering key b 15
	Tool adaption:	Ø 32
	Coolant:	IC/Ext
	Center distance [mm]:	80
8 240 09 039	Boring bar holder Ø 40	
	Weight [kg]:	7.050
	Notation:	180° reversible
	Employment for:	Main- and sub spindle
	Shank type:	BMT
	Machine adaption:	Centering key slot b 15
	Tool adaption:	Ø 40
	Coolant:	IC/Ext
	Center distance [mm]:	95
8 244 05 003	Combi facing holder sq. 25	
	Weight [kg]:	5.340
	Notation:	180° reversible
	Employment for:	Main- and sub spindle
	Shank type:	BMT
	Machine adaption:	Centering key b 15
	Tool adaption:	Sq. 25
	Coolant:	EXT
	Pressure max [bar]:	80
8 244 05 006	Combi facing holder sq. 1"	
	Weight [kg]:	5.310
	Notation:	180° reversible
	Employment for:	Main- and sub spindle
	Shank type:	BMT
	Machine adaption:	Centering key b 15
	Tool adaption:	Sq. 1" (25,4mm)
	Coolant:	EXT
8 251 04 022	Combi multiple holder 6x sq. 20 IC	
	Employment for:	Main- and sub spindle
	Shank type:	BMT
	Machine adaption:	Centering key b 15
	Tool adaption:	Sq. 20
		Sq. 20
		Sq. 20

Part-#	Name
--------	------

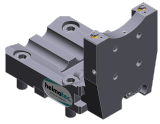
	<p>Coolant: Pressure max [bar]: Please note:</p>	<p>Sq. 20 IC/Ext 100 Key rail</p>
<p>8 251 05 001</p> 	<p>Combi double turning holder sq. 25 Weight [kg]: Employment for: Shank type: Machine adaption: Tool adaption:</p>	<p>7.700 Main- and sub spindle BMT Centering key b 15 Sq. 25 Sq. 25 Sq. 25 Sq. 25 EXT 80</p>
<p>8 253 07 024</p> 	<p>Multiple boring bar holder 3x Ø 1" Employment for: Shank type: Machine adaption: Tool adaption:</p>	<p>Main- and sub spindle BMT Centering key b 15 Ø 1" (25,4mm) Ø 1" (25,4mm) IC/Ext 100 65/100</p>
<p>8 253 07 072</p> 	<p>Multiple boring bar holder 3x Ø 25 Employment for: Shank type: Machine adaption: Tool adaption:</p>	<p>Main- and sub spindle BMT Centering key b 15 Ø 25 Ø 25 IC/Ext 100 65/100</p>
<p>8 259 04 007</p> 	<p>Multiple turning holder sq. 20 Weight [kg]: Notation: Employment for: Version: Shank type: Machine adaption: Tool adaption:</p>	<p>8.180 180° reversible Main- and sub spindle Special BMT Centering key b 15 Sq. 20 Sq. 20 Sq. 20 IC/Ext</p>
<p>8 259 07 002</p> 	<p>Multiple boring bar holder Ø 25 Notation: Employment for: Shank type: Machine adaption: Tool adaption:</p>	<p>180° reversible Main- and sub spindle BMT Centering key b 15 Ø 25 Ø 25</p>

Hyundai-WIA
LM 1800 TT serie

Part-#	Name
--------	------

Coolant: IC/Ext
Pressure max [bar]: 100
Center distance [mm]: 100


8 320 03 025 Cut-off holder, height adjustable SH 32 IC



Weight [kg]: 1.910
Notation: 180° reversible
Shank type: BMT
Machine adaption: Centering key b 15
Tool adaption: Clampshaft SH 32
Coolant: IC/Ext
Pressure max [bar]: 70
Please note: Clampshaft internal

8 320 09 001 Cut-off holder, height adjustable 845 IC



Weight [kg]: 1.730
Notation: 180° reversible
Shank type: BMT
Machine adaption: Centering key b 15
Tool adaption:  System 845
Coolant: IC
Pressure max [bar]: 70

heimatec.u-tec®

heimatec.com

Products / Tool change systems /
u-tec® Tool-changing system



versions see catalog



heimatec.easy-quick

heimatec.com

Products / Tool change systems /
easy-quick HT quick-changing system



versions see catalog



heimatec.Capto™

heimatec.com

Products / Tool change systems /
heimatec.Capto™ quick-changing system



versions see catalog



heimatec.accessories

heimatec.com

Products / Accessories



versions see catalog





● heimatec overseas branches

○ global representations of heimatec

heimatec[®]

heimatec GmbH
Präzisionswerkzeuge
Carl-Benz-Str. 4
77871 Renchen
Germany

T +49 7843 9466 0
www.heimatec.com
info@heimatec.com

Please find the contact details of our worldwide trading partners on our website:
<https://heimatec.com/business-partners>