

Hyundai-WIA  
**SE 2200 LMS**



# High-tech from heimatec - heimatec - Tools and systems for productive turning and milling

heimatec belongs to the international technology and quality leaders for precision tools and specializes in the development and production of high-precision static and live tools for all CNC lathes, CNC turn-/mill machines and CNC machining centers.

The range of products\* spans from static BMT and VDI tool holders, live tools up to highly complex customer-specific individual solutions. heimatec, headquartered in Renchen, has a own subsidiary in Asia and India and numerous representatives as well as trading partners all over the world.

## \*OUR PRODCUTS

Static tool holders

Live tool units

Precision tools

Tools for turning and machining centres

Tools for swiss type lathes

Tool changing and uick-change systems

Tool systems for gear production

Digital tool management

This catalogue, including all its parts, is protected by copyright. Any use outside the restricted limitations of the Copyright Act without the consent of heimatec is inadmissible and liable to prosecution. This applies in particular to duplication, translation, microfilming and storage and processing in electronic systems.

**heimatec GmbH** reserves the right to make technical changes at any time without giving prior notice. This applies in particular to adjustments at any time to meet new or changed international standards, or in case of further developments of our products or manufacturing processes.

The current version of our General Terms and Conditions can be found on our website.

Part-#	Name
--------	------

**8 010 45 129**



**Axial drilling and milling head ER 25 AX UT**

Weight [kg]:	1.830
Tool drive:	Flat (~DIN 1809)
Shank size [mm]:	45.00
Shank type:	BMT
Tool adaption:	ER 25 A - u-tec
Gear ratio [i]:	1:1
Torque max [Nm]:	32
Rotation max [1/min]:	10000
Rotating direction:	same
Coolant:	EXT

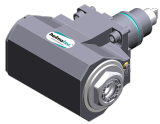
**8 030 45 272**



**Angle-mill- and drill holder ER 25 AX UT**

Weight [kg]:	5.470
Notation:	180° reversible
Tool drive:	Flat (~DIN 1809)
Shank size [mm]:	45.00
Shank type:	BMT
Tool adaption:	ER 25 A - u-tec
Gear ratio [i]:	1:1
Torque max [Nm]:	50
Rotation max [1/min]:	8000
Rotating direction:	opposite
Coolant:	EXT
Please note:	Combi bearing
Center distance [mm]:	65

**8 030 45 273**



**Angle-mill- and drill holder ER 25 AX UT IC**

Weight [kg]:	5.690
Notation:	180° reversible
Tool drive:	Flat (~DIN 1809)
Shank size [mm]:	45.00
Shank type:	BMT
Tool adaption:	ER 25 A - u-tec
Gear ratio [i]:	1:1
Torque max [Nm]:	50
Rotation max [1/min]:	6000
Rotating direction:	opposite
Coolant:	IC/Ext
Pressure max [bar]:	140
Please note:	Combi bearing
Center distance [mm]:	65

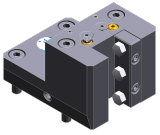

**8 030 45 594**



**Radial drilling and milling head ER 25 AX UT**

Weight [kg]:	5.030
Notation:	180° reversible
Tool drive:	Flat (~DIN 1809)
Shank size [mm]:	45.00
Shank type:	BMT
Tool adaption:	ER 25 A - u-tec
Gear ratio [i]:	1:1
Torque max [Nm]:	50
Rotation max [1/min]:	12000
Rotating direction:	opposite
Coolant:	EXT
Center distance [mm]:	65



Part-#	Name	
8 224 03 017	<b>Universal turning holder sq. 3/4"</b>	
		<p>Weight [kg]: 2.550            Notation: 180° reversible            Shank type: BMT            Machine adaption: Centering key b 15            Tool adaption: Sq. 3/4" (19,05mm)            Coolant: EXT</p>
8 224 04 003	<b>Universal turning holder sq. 20</b>	<p>Weight [kg]: 2.510            Notation: 180° reversible            Shank type: BMT            Machine adaption: Centering key b 15            Tool adaption: Sq. 20            Coolant: EXT            Pressure max [bar]: 80</p>
8 224 04 060	<b>Universal turning holder sq. 20 IC</b>	
		<p>Weight [kg]: 2.650            Notation: 180° reversible            Shank type: BMT            Machine adaption: Centering key b 15            Tool adaption: Sq. 20            Coolant: IC/Ext            Pressure max [bar]: 100            Please note: Key rail</p>
8 244 04 022	<b>Combi facing holder sq. 20 IC</b>	<p>Weight [kg]: 2.200            Employment for: Main- and sub spindle            Shank type: BMT            Machine adaption: Centering key b 15            Tool adaption: Sq. 20            Coolant: IC/Ext            Pressure max [bar]: 100            Please note: Key rail</p>



## heimatec.u-tec®

heimatec.com

Products / Tool change systems /  
u-tec® Tool-changing system



versions see catalog



## heimatec.easy-quick

heimatec.com

Products / Tool change systems /  
easy-quick HT quick-changing system



versions see catalog



## heimatec.Capto™

heimatec.com

Products / Tool change systems /  
heimatec.Capto™ quick-changing system



versions see catalog



## heimatec.accessories

heimatec.com

Products / Accessories



versions see catalog





● heimatec overseas branches

○ global representations of heimatec

**heimatec**<sup>®</sup>

**heimatec GmbH**  
Präzisionswerkzeuge  
Carl-Benz-Str. 4  
77871 Renchen  
Germany

T +49 7843 9466 0  
[www.heimatec.com](http://www.heimatec.com)  
[info@heimatec.com](mailto:info@heimatec.com)

Please find the contact details of our worldwide trading partners on our website:  
<https://heimatec.com/business-partners>