

**TOPSELLER -**  
many more available!

Live Tools

**heimatec**®

# SPINNER

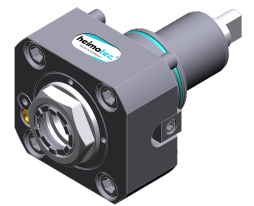
## TS 850 /-XL - BMT 65

Part-#	Tool adaption	Rotation max [1/min]	Gear ratio	Coolant	Pressure max.	Center distance
<b>Axial drilling and milling head</b>						
8 010 66 143	<b>ER 32 A - u-tec</b>	12.000	1:1	IC/Ext	100 bar	--
8 010 66 145	<b>ER 32 A - u-tec</b>	12.000	1:1	EXT	140 bar	--
<b>Radial drilling and milling head</b>						
8 030 66 269	<b>ER 32 A - u-tec</b>	10.000	1:1	EXT	--	<b>100 mm</b>
8 030 66 176	<b>ER 32 A - u-tec</b>	6.000	1:1	EXT	--	<b>150 mm</b>
<b>Radial drilling and milling head, double spindle</b>						
8 039 66 021	<b>ER 32 A - u-tec</b>	10.000	1:1	EXT	--	<b>100 mm</b>
<b>Universal head, offset</b>						
8 043 65 000	<b>ER 25 A - u-tec</b>	6.000	1:1	EXT	--	<b>69 mm</b>

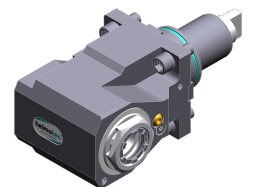
Illustrations similar.



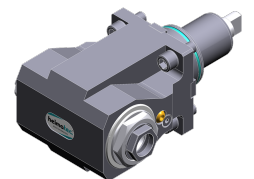
8 010 66 143



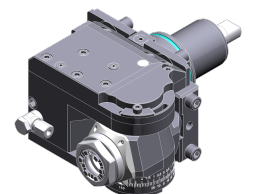
8 010 66 145



8 030 66 269



8 039 66 021



8 043 65 000

**TOPSELLER -**  
many more available!

Static Tools

**heimatec**®

# SPINNER

## TS 850 /-XL - BMT 65

Part-#	Tool adaption	Coolant	Pressure max.
<b>Multiple boring bar holder</b>			
8 253 18 023	<b>Ø 32</b>	IC/Ext	140 bar
<b>Multiple boring bar holder, double</b>			
8 259 18 000	<b>Ø 32</b>	IC/Ext	140 bar

*Illustrations similar.*



8 253 18 023



8 259 18 000