

TOPSELLER -
many more available!

Live Tools

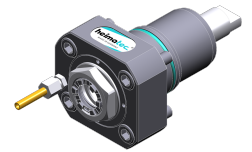
heimatec®

Nakamura

AS-200 - 15 Stationen

Part-#	Tool adaption	Rotation max [1/min]	Gear ratio	Coolant	Pressure max.	Center distance
Axial drilling and milling head						
8 010 55 109	ER 25 A - u-tec	12.000	1:1	EXT	--	--
8 010 55 111	ER 25 A - u-tec	15.000	1:1	IC/Ext	100 bar	--
8 010 56 151	ER 32 A - u-tec	12.000	1:1	EXT	--	--
8 010 56 153	ER 32 A - u-tec	15.000	1:1	IC/Ext	100 bar	--
Radial drilling and milling head						
8 030 55 238	ER 25 A - u-tec	12.000	1:1	EXT	--	65 mm
8 030 55 239	ER 25 A - u-tec	12.000	1:1	IC/Ext	140 bar	65 mm
8 030 56 235	ER 32 A - u-tec	12.000	1:1	EXT	--	65 mm
8 030 56 236	ER 32 A - u-tec	12.000	1:1	IC/Ext	140 bar	65 mm
8 030 56 237	ER 32 A - u-tec	12.000	1:1	EXT	--	75 mm
8 030 56 238	ER 32 A - u-tec	12.000	1:1	IC/Ext	140 bar	75 mm
Universal head						
8 040 54 033	ER 16 A - u-tec	12.000	1:1	IC/Ext	140 bar	46 mm
Universal head, offset						
8 043 54 000	ER 16 A - u-tec	6.000	1:1	EXT	--	69 mm
8 043 54 001	ER 16 A - u-tec	6.000	1:1	IC/Ext	140 bar	69 mm

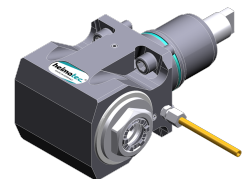
Illustrations similar.



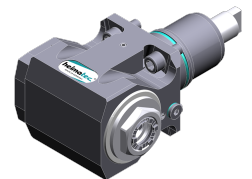
8 010 55 109



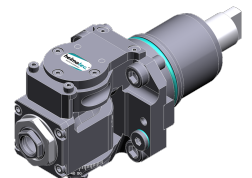
8 010 55 111



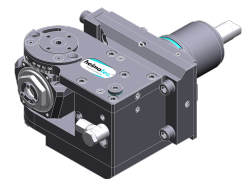
8 030 55 238



8 030 55 239



8 040 54 033



8 043 54 000

TOPSELLER -
many more available!

Static Tools

heimatec®

Nakamura

AS-200 - 15 Stationen

Part-#	Tool adaption	Coolant	Pressure max.	Center distance
Cut-off holder				
8 224 13 007	Clampshaft SH 32	EXT	--	--
Universal turning holder				
8 224 14 016	Sq. 20	IC/Ext	100 bar	--
8 224 15 002	Sq. 25	EXT	--	--
8 224 15 062	Sq. 25	IC/Ext	100 bar	--
Boring bar holder				
8 240 17 005	Ø 25	IC/Ext	--	75 mm
8 240 18 010	Ø 32	IC/Ext	140 bar	75 mm
8 240 19 009	Ø 40	IC/Ext	--	75 mm
Double turning holder				
8 251 12 006	Sq. 25	EXT	--	--
8 251 15 048	Sq. 25	IC/Ext	100 bar	--
Multiple boring bar holder				
8 253 17 013	Ø 25	IC/Ext	--	--
Cut-off holder, height adjustable				
8 320 12 010	Clampshaft SH 26	IC/Ext	70 bar	--
8 320 13 002	Clampshaft SH 32	IC/Ext	70 bar	--

Illustrations similar.



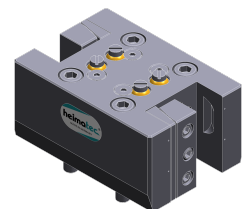
8 224 13 007



8 224 14 016



8 240 17 005



8 251 15 048