

Goodway
**GTX 2000 -
12-Stat.**



High-tech from heimatec - heimatec - Tools and systems for productive turning and milling

heimatec belongs to the international technology and quality leaders for precision tools and specializes in the development and production of high-precision static and live tools for all CNC lathes, CNC turn-/mill machines and CNC machining centers.

The range of products* spans from static BMT and VDI tool holders, live tools up to highly complex customer-specific individual solutions. heimatec, headquartered in Renchen, has a own subsidiary in Asia and India and numerous representatives as well as trading partners all over the world.

*OUR PRODCUTS

Static tool holders

Live tool units

Precision tools

Tools for turning and machining centres

Tools for swiss type lathes

Tool changing and uick-change systems



Tool systems for gear production

Digital tool management

This catalogue, including all its parts, is protected by copyright. Any use outside the restricted limitations of the Copyright Act without the consent of heimatec is inadmissible and liable to prosecution. This applies in particular to duplication, translation, microfilming and storage and processing in electronic systems.

heimatec GmbH reserves the right to make technical changes at any time without giving prior notice. This applies in particular to adjustments at any time to meet new or changed international standards, or in case of further developments of our products or manufacturing processes.

The current version of our General Terms and Conditions can be found on our website.

Part-#	Name	
8 010 67 132	Axial drilling and milling head ER 40 AX UT	
	Weight [kg]:	4.870
	Tool drive:	Flat (~DIN 1809)
	Shank size [mm]:	65.00
	Shank type:	BMT
	Tool adaption:	ER 40 A - u-tec
	Gear ratio [i]:	1:1
	Torque max [Nm]:	50
	Rotation max [1/min]:	5000
	Rotating direction:	same
	Coolant:	EXT
	Please note:	Combi bearing
8 013 64 008	Axial drilling and milling head ER 16 AX UT	
	Weight [kg]:	4.050
	Tool drive:	Flat (~DIN 1809)
	Shank size [mm]:	65.00
	Shank type:	BMT
	Tool adaption:	ER 16 A - u-tec
	Gear ratio [i]:	1:4
	Torque max [Nm]:	5
	Rotation max [1/min]:	24000
	Rotating direction:	same
	Coolant:	EXT
8 013 64 009	Axial drilling and milling head ER 16 AX UT IC	
	Tool drive:	Flat (~DIN 1809)
	Shank size [mm]:	65.00
	Shank type:	BMT
	Tool adaption:	ER 16 A - u-tec
	Gear ratio [i]:	1:4
	Torque max [Nm]:	5
	Rotation max [1/min]:	24000
	Rotating direction:	same
	Coolant:	IC/Ext
	Pressure max [bar]:	100
8 019 61 000	Axial drilling and milling head CHC	
	Weight [kg]:	10.690
	Notation:	180° reversible, IC-300
	Version:	no Splash-protection
	Tool drive:	Flat (~DIN 1809)
	Shank size [mm]:	65.00
	Shank type:	BMT
	Tool adaption:	CHC
	Gear ratio [i]:	1:0,75
	Rotation max [1/min]:	4500
	Rotating direction:	opposite
	Coolant:	no
	Center distance [mm]:	100
	Offset [mm]:	174,9

Part-#	Name
--------	------

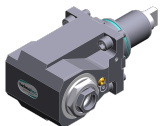
8 030 66 169



Radial drilling and milling head ER 32 AS UT IC

Weight [kg]: 10.550
 Notation: 180° reversible
 Tool drive: Flat (~DIN 1809)
 Shank size [mm]: 65.00
 Shank type: BMT
 Tool adaption: ER 32 A - u-tec
 Gear ratio [i]: 2:1
 Torque max [Nm]: 80
 Rotation max [1/min]: 3000
 Rotating direction: opposite
 Coolant: IC/Ext
 Pressure max [bar]: 140
 Please note: Rotating direction note; combi bearing
 Center distance [mm]: 100

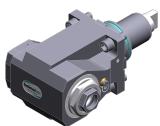
8 030 66 260



Radial drilling and milling head ER 32 AS UT

Weight [kg]: 9.260
 Notation: 180° reversible
 Tool drive: Flat (~DIN 1809)
 Shank size [mm]: 65.00
 Shank type: BMT
 Tool adaption: ER 32 A - u-tec
 Gear ratio [i]: 1:1
 Torque max [Nm]: 70
 Rotation max [1/min]: 10000
 Rotating direction: same
 Coolant: EXT
 Center distance [mm]: 100

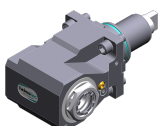
8 030 66 261



Radial drilling and milling head ER 32 AS UT IC




Weight [kg]: 9.440
 Notation: 180° reversible
 Tool drive: Flat (~DIN 1809)
 Shank size [mm]: 65.00
 Shank type: BMT
 Tool adaption: ER 32 A - u-tec
 Gear ratio [i]: 1:1
 Torque max [Nm]: 70
 Rotation max [1/min]: 10000
 Rotating direction: same
 Coolant: IC/Ext
 Pressure max [bar]: 140
 Center distance [mm]: 100

8 030 66 269



Radial drilling and milling head ER 32 AX UT

Notation: 180° reversible
 Tool drive: Flat (~DIN 1809)
 Shank size [mm]: 65.00
 Shank type: BMT
 Tool adaption: ER 32 A - u-tec
 Gear ratio [i]: 1:1
 Torque max [Nm]: 70
 Rotation max [1/min]: 10000
 Rotating direction: same
 Coolant: EXT

Part-#	Name	
	Center distance [mm]:	100
8 030 66 270	Radial drilling and milling head ER 32 AX UT IC	
	Weight [kg]:	9.980
	Notation:	180° reversible
	Tool drive:	Flat (~DIN 1809)
	Shank size [mm]:	65.00
	Shank type:	BMT
	Tool adaption:	ER 32 A - u-tec
	Gear ratio [i]:	1:1
	Torque max [Nm]:	70
	Rotation max [1/min]:	10000
	Rotating direction:	same
	Coolant:	IC/Ext
	Pressure max [bar]:	140
	Center distance [mm]:	100
8 030 67 165	Radial drilling and milling head ER 40 AX UT	
	Weight [kg]:	10.540
	Notation:	180° reversible
	Tool drive:	Flat (~DIN 1809)
	Shank size [mm]:	65.00
	Shank type:	BMT
	Tool adaption:	ER 40 u-tec
	Gear ratio [i]:	1:1
	Torque max [Nm]:	50
	Rotation max [1/min]:	6000
	Rotating direction:	same
	Coolant:	EXT
	Please note:	Combi bearing
	Center distance [mm]:	100
8 039 65 033	Radial drilling and milling head ER 25 AX UT	
	Weight [kg]:	7.930
	Notation:	180° reversible
	Employment for:	Main- and sub spindle
	Version:	double spindle
	Tool drive:	Flat (~DIN 1809)
	Shank size [mm]:	65.00
	Shank type:	BMT
	Tool adaption:	ER 25 A - u-tec
	Gear ratio [i]:	1:2
	Torque max [Nm]:	16
	Rotation max [1/min]:	12000
	Rotating direction:	same/opposite
	Coolant:	EXT
	Please note:	stronger bearing
	Center distance [mm]:	80
8 039 66 021	Radial drilling and milling head ER 32 AX UT	
	Notation:	180° reversible
	Employment for:	Main- and sub spindle
	Version:	double spindle
	Tool drive:	Flat (~DIN 1809)
	Shank size [mm]:	65.00
	Shank type:	BMT
	Tool adaption:	ER 32 A - u-tec

Part-#	Name
--------	------

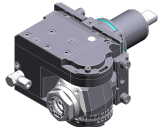
Gear ratio [i]: 1:1
 Torque max [Nm]: 70
 Rotation max [1/min]: 10000
 Rotating direction: same/opposite
 Coolant: EXT
 Please note: stronger bearing
 Center distance [mm]: 100

8 039 66 025 Radial drilling and milling head ER 32 AS UT



Weight [kg]: 8.700
 Notation: 180° reversible
 Employment for: Main- and sub spindle
 Version: double spindle
 Tool drive: Flat (~DIN 1809)
 Shank size [mm]: 65.00
 Shank type: BMT
 Tool adaption: ER 32 A - u-tec
 Gear ratio [i]: 1:1
 Torque max [Nm]: 70
 Rotation max [1/min]: 10000
 Rotating direction: same/opposite
 Coolant: EXT
 Please note: stronger bearing
 Center distance [mm]: 72

8 043 65 000 Universal head +135°/-30° adj. ER25 AX UT



Weight [kg]: 10.800
 Notation: offset; 180° reversible
 Tool drive: Flat (~DIN 1809)
 Shank size [mm]: 65.00
 Shank type: BMT
 Tool adaption: ER 25 A - u-tec
 Gear ratio [i]: 1:1
 Torque max [Nm]: 25
 Rotation max [1/min]: 6000
 Rotating direction: same
 Coolant: EXT
 Please note: stronger bearing; note tool length!
 Center distance [mm]: 69
 Offset [mm]: 60

8 050 65 011 Multispindle drilling head ER 25 AX UT



Weight [kg]: 6.700
 Version: 2-spindles
 Tool drive: Flat (~DIN 1809)
 Shank size [mm]: 65.00
 Shank type: BMT
 Tool adaption: ER 25 A - u-tec
 Gear ratio [i]: 1:1
 Torque max [Nm]: 32/Sp.
 Rotation max [1/min]: 6000
 Rotating direction: opposite
 Coolant: EXT
 Please note: stronger bearing

Part-#	Name
--------	------

8 050 65 012

Multispindle drilling head ER 25 AX UT IC



Weight [kg]: 6.740
 Tool drive: Flat (~DIN 1809)
 Shank size [mm]: 65.00
 Shank type: BMT
 Tool adaption: ER 25 A - u-tec
 Gear ratio [i]: 1:1
 Torque max [Nm]: 32/Sp.
 Rotation max [1/min]: 6000
 Rotating direction: opposite
 Coolant: IC/Ext
 Pressure max [bar]: 25
 Please note: stronger bearing

8 100 16 000

Tool holder radial ø17,1 / minus



Notation: 180° reversible
 Employment for: Angle handpiece or extension CN01
 Tool drive: Flat (~DIN 1809)
 Shank size [mm]: 65.00
 Shank type: BMT
 Tool adaption: Interface ø17,1 / M17x1
 Gear ratio [i]: 1:1
 Rotation max [1/min]: 6000
 Rotating direction: opposite
 Coolant: no
 Center distance [mm]: 100

8 202 10 009

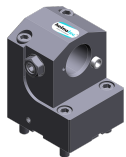
Basic holder longitudinal seat FN 12



Weight [kg]: 1.490
 Notation: 180° reversible
 Shank type: BMT
 Machine adaption: Centering key b 18
 Tool adaption: Interface FN 12
 Coolant: EXT

8 209 14 006

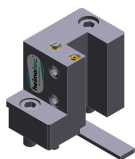
Adapter for VDI 40



Weight [kg]: 7.650
 Notation: 180° reversible
 Employment for: Main- and sub spindle
 Shank type: BMT
 Machine adaption: Centering key b 18
 Tool adaption: DIN 69880 - 40
 Coolant: EXT
 Center distance [mm]: 100

8 224 12 014


Cut-off holder sq. 25



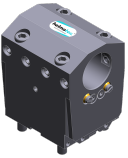
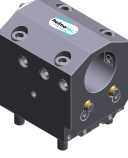


Weight [kg]: 2.320




Part-#	Name	
8 224 13 015	Cut-off holder SH 32	
	Weight [kg]:	1.870
	Employment for:	Cut-off tool 32
	Version:	Clampshaft on turret side
	Shank type:	BMT
	Machine adaption:	Centering key b 18
	Tool adaption:	Clampshaft SH 32
	Coolant:	EXT
8 224 14 026	Universal turning holder sq. 20 IC	
	Weight [kg]:	3.795
	Shank type:	BMT
	Machine adaption:	Centering key b 18
	Tool adaption:	Sq. 20
		Sq. 20
	Coolant:	IC/Ext
	Pressure max [bar]:	100
	Please note:	Key rail
8 224 14 027	Universal turning holder sq. 20 IC	
	Weight [kg]:	4.600
	Notation:	180° reversible
	Shank type:	BMT
	Machine adaption:	Centering key b 18
	Tool adaption:	Sq. 20
		Sq. 20
	Coolant:	IC/Ext
	Pressure max [bar]:	100
	Please note:	Key rail
8 224 15 005	Universal turning holder sq. 25	
	Weight [kg]:	3.960
	Machine adaption:	Centering key b 18
	Tool adaption:	Sq. 25
	Coolant:	EXT
	Pressure max [bar]:	80
8 224 15 006	Universal turning holder sq. 25	
	Weight [kg]:	4.590
	Notation:	180° reversible
	Machine adaption:	Centering key b 18
	Tool adaption:	Sq. 25
		Sq. 25
	Coolant:	EXT
	Pressure max [bar]:	80
8 224 15 015	Universal turning holder sq. 1"	
	Weight [kg]:	3.930
	Machine adaption:	Centering key b 18
	Tool adaption:	Sq. 1" (25,4mm)
	Coolant:	EXT

Part-#	Name	
8 224 15 016	Universal turning holder sq. 1"	
	Weight [kg]:	4.580
	Shank type:	BMT
	Machine adaption:	Centering key b 18
	Tool adaption:	Sq. 1" (25,4mm)
		Sq. 1" (25,4mm)
	Coolant:	EXT
8 224 15 052	Universal turning holder sq. 25 IC	
	Shank type:	BMT
	Machine adaption:	Centering key b 18
	Tool adaption:	Sq. 25
		Sq. 25
	Coolant:	IC/Ext
	Pressure max [bar]:	100
	Please note:	Key rail
8 224 15 053	Universal turning holder sq. 25 IC	
	Weight [kg]:	4.690
	Notation:	180° reversible
	Shank type:	BMT
	Machine adaption:	Centering key b 18
	Tool adaption:	Sq. 25
		Sq. 25
	Coolant:	IC/Ext
	Pressure max [bar]:	100
	Please note:	Key rail
8 224 15 056	Universal turning holder sq. 1" IC	
	Notation:	180° reversible
	Shank type:	BMT
	Machine adaption:	Centering key b 18
	Tool adaption:	Sq. 1" (25,4mm)
		Sq. 1" (25,4mm)
	Coolant:	IC/Ext
	Pressure max [bar]:	100
	Please note:	Key rail
8 229 16 012	Tool holder C 4 IC	
	Weight [kg]:	3.300
	Notation:	180° reversible
	Version:	right
	Shank type:	BMT
	Machine adaption:	Centering key b 18
	Tool adaption:	heimatec Capto(TM) C 4
	Coolant:	IC
	Please note:	Check applicability; note tool length!
	Offset [mm]:	31


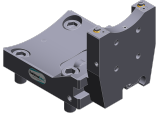


Part-#	Name	
 <p>8 240 15 026</p>	<p>Tool holder ABS 50 IC/Ext Weight [kg]: Notation: Employment for: Shank type: Machine adaption: Tool adaption: Coolant: Center distance [mm]:</p>	<p>7.800 180° reversible Main- and sub spindle BMT Centering key b 18 ABS 50 IC/Ext 100</p>
 <p>8 240 16 026</p>	<p>Collet chuck holder ER 32 Weight [kg]: Notation: Shank type: Machine adaption: Tool adaption: Coolant: Please note: Center distance [mm]:</p>	<p>6.820 180° reversible BMT Centering key b 18 ER 32 IC/Ext Insert reversible 100</p>
 <p>8 240 17 050</p>	<p>Boring bar holder Ø 25 Weight [kg]: Notation: Employment for: Shank type: Machine adaption: Tool adaption: Coolant: Pressure max [bar]: Center distance [mm]:</p>	<p>10.730 180° reversible Main- and sub spindle BMT Centering key b 18 Ø 25 IC/Ext 80 100</p>
 <p>8 240 17 063</p>	<p>Boring bar holder Ø 1 1/4" Weight [kg]: Notation: Employment for: Shank type: Machine adaption: Tool adaption: Coolant: Center distance [mm]:</p>	<p>10.500 180° reversible Main- and sub spindle BMT Centering key b 18 Ø 1 1/4" (31,75mm) IC/Ext 100</p>
 <p>8 240 18 049</p>	<p>Boring bar holder Ø 32 Weight [kg]: Notation: Employment for: Shank type: Machine adaption: Tool adaption: Coolant: Pressure max [bar]: Center distance [mm]:</p>	<p>10.480 180° reversible Main- and sub spindle BMT Centering key b 18 Ø 32 IC/Ext 80 100</p>

Part-#	Name	
8 240 18 091	Boring bar holder Ø 1 1/2"	
	Weight [kg]:	10.110
	Notation:	180° reversible
	Shank type:	BMT
	Machine adaption:	Centering key b 18
	Tool adaption:	Ø 1 1/2" (38,1mm)
	Coolant:	IC/Ext
	Center distance [mm]:	100
8 240 19 043	Boring bar holder Ø 40	
	Weight [kg]:	10.050
	Notation:	180° reversible
	Employment for:	Main- and sub spindle
	Shank type:	BMT
	Machine adaption:	Centering key b 18
	Tool adaption:	Ø 40
	Coolant:	IC/Ext
	Pressure max [bar]:	80
	Center distance [mm]:	100
8 240 19 051	Boring bar holder Ø 50	
	Weight [kg]:	9.340
	Notation:	180° reversible
	Employment for:	Main- and sub spindle
	Shank type:	BMT
	Machine adaption:	Centering key b 18
	Tool adaption:	Ø 50
	Coolant:	IC/Ext
	Pressure max [bar]:	80
	Center distance [mm]:	100
8 240 19 070	Boring bar holder Ø 50	
	Weight [kg]:	11.220
	Notation:	180° reversible
	Employment for:	Main- and sub spindle
	Version:	Special
	Shank type:	BMT
	Machine adaption:	Centering key b 18
	Tool adaption:	Ø 50
	Coolant:	IC/Ext
	Center distance [mm]:	115
8 240 19 137	Boring bar holder Ø 2"	
	Weight [kg]:	7.060
	Notation:	180° reversible
	Shank type:	BMT
	Machine adaption:	Centering key b 18
	Tool adaption:	Ø 2" (50,8mm)
	Coolant:	IC/Ext
	Center distance [mm]:	80

Part-#	Name	
8 244 15 005	Combi facing holder sq. 25	
	Weight [kg]:	6.510
	Shank type:	BMT
	Machine adaption:	Centering key slot b 18
	Tool adaption:	Sq. 25
	Coolant:	EXT
	Pressure max [bar]:	80
8 244 15 006	Combi facing holder sq. 1"	
	Weight [kg]:	6.530
	Shank type:	BMT
	Machine adaption:	Centering key slot b 18
	Tool adaption:	Sq. 1" (25,4mm)
	Coolant:	EXT
8 249 16 005	Double collet chuck holder ER 32	
	Weight [kg]:	8.560
	Notation:	180° reversible
	Employment for:	Main- and sub spindle
	Shank type:	BMT
	Machine adaption:	Centering key b 18
	Tool adaption:	ER 32
	Coolant:	IC/Ext
	Center distance [mm]:	100
8 251 15 003	Combi double turning holder sq. 25	
	Notation:	180° reversible
	Shank type:	BMT
	Machine adaption:	Centering key b 18
	Tool adaption:	Sq. 25
		Sq. 25
		Sq. 25
		Sq. 25
	Coolant:	EXT
	Pressure max [bar]:	80
8 251 15 008	Combi double turning holder sq. 1"	
	Weight [kg]:	6.590
	Shank type:	BMT
	Machine adaption:	Centering key b 18
	Tool adaption:	Sq. 1" (25,4mm)
	Coolant:	EXT
8 251 15 046	Combi double turning holder sq. 25 IC	
	Weight [kg]:	6.520
	Notation:	180° reversible
	Shank type:	BMT
	Machine adaption:	Centering key b 18
	Tool adaption:	Sq. 25
		Sq. 25
		Sq. 25
		Sq. 25
	Coolant:	IC/Ext

Part-#	Name	
	Pressure max [bar]:	100
	Please note:	Key rail
8 253 17 056	Double boring bar holder Ø 25	
	Weight [kg]:	7.300
	Notation:	180° reversible
	Employment for:	Main- and sub spindle
	Machine adaption:	Centering key b 18
	Tool adaption:	Ø 25
	Coolant:	IC/Ext
	Please note:	Special
	Center distance [mm]:	70/110
8 253 17 097	Multiple boring bar holder, double Ø 25	
	Weight [kg]:	8.110
	Notation:	180° reversible
	Employment for:	Main- and sub spindle
	Shank type:	BMT
	Machine adaption:	Centering key b 18
	Tool adaption:	Ø 25
		Ø 25
		Ø 25
		Ø 25
		Ø 25
	Coolant:	IC/Ext
	Center distance [mm]:	36/75/114
8 253 17 115	Multiple boring bar holder Ø 1 1/4"	
	Weight [kg]:	8.950
	Notation:	180° reversible
	Shank type:	BMT
	Machine adaption:	Centering key b 18
	Tool adaption:	Ø 1 1/4" (31,75mm)
		Ø 1 1/4" (31,75mm)
	Coolant:	IC/Ext
	Center distance [mm]:	70/110
8 253 18 005	Double boring bar holder Ø 1 1/4"	
	Weight [kg]:	9.100
	Notation:	180° reversible
	Employment for:	Main- and sub spindle
	Shank type:	BMT
	Machine adaption:	Centering key b 18
	Tool adaption:	Ø 1 1/4" (31,75mm)
	Coolant:	IC/Ext
	Center distance [mm]:	56/107
8 253 18 006	Double boring bar holder Ø 32	
	Weight [kg]:	8.860
	Notation:	180° reversible
	Employment for:	Main- and sub spindle
	Shank type:	BMT
	Machine adaption:	Centering key b 18
	Tool adaption:	Ø 32
		Ø 32

Part-#	Name	
	Coolant:	IC/Ext
	Please note:	Special
	Center distance [mm]:	70/110
8 259 12 007	Multiple turning holder sq. 25/1"	
	Weight [kg]:	8.790
	Employment for:	Main- and sub spindle
	Version:	Y-axes offset
	Shank type:	BMT
	Machine adaption:	Centering key b 18
	Tool adaption:	Sq. 25/1" (25,4mm)
		Sq. 25/1" (25,4mm)
		Sq. 25/1" (25,4mm)
		Sq. 25/1" (25,4mm)
	Coolant:	EXT
8 259 12 008	Multiple turning holder sq. 25/1"	
	Weight [kg]:	5.000
	Notation:	180° reversible
	Version:	Y-axes offset
	Shank type:	BMT
	Machine adaption:	Centering key b 18
	Tool adaption:	Sq. 25/1" (25,4 mm)
		Sq. 25/1" (25,4 mm)
	Coolant:	EXT
8 259 17 009	Double boring bar holder Ø 1"	
	Notation:	180° reversible
	Employment for:	Main- and sub spindle
	Machine adaption:	Centering key b 18
	Tool adaption:	Ø 1" (25,4mm)
	Coolant:	IC/Ext
	Please note:	Special
	Center distance [mm]:	70/110
8 320 12 017	Cut-off holder, height adjustable SH 26 IC	
	Weight [kg]:	1.980
	Notation:	180° reversible
	Shank type:	BMT
	Machine adaption:	Centering key b 18
	Tool adaption:	Clampshaft SH 26
	Coolant:	IC/Ext
	Pressure max [bar]:	70
8 320 13 005	Cut-off holder, height adjustable SH 32 IC	
	Weight [kg]:	2.120
	Notation:	180° reversible
	Shank type:	BMT
	Machine adaption:	Centering key b 18
	Tool adaption:	Clampshaft SH 32
	Coolant:	IC/Ext
	Pressure max [bar]:	70

Part-#	Name	
8 320 13 019	Cut-off holder, height adjustable SH 32 IC	
	Notation: Shank type: Machine adaption: Tool adaption: Coolant: Pressure max [bar]: Please note:	180° reversible BMT Centering key b 18 Clampshaft SH 32 IC/Ext 70 with offset cut-off tool holder; use
8 320 13 020	Cut-off holder, height adjustable SH 32 IC	
	Weight [kg]: Notation: Shank type: Machine adaption: Tool adaption: Coolant: Pressure max [bar]: Please note:	2.240 180° reversible BMT Centering key b 18 Clampshaft SH 32 IC/Ext 70 Clampshaft internal
8 320 19 020	Cut-off holder, height adjustable 845 IC	
	Notation: Shank type: Machine adaption: Tool adaption: Coolant: Pressure max [bar]: Please note:	180° reversible BMT Centering key b 18  System 845 IC 70 Clampshaft internal



● heimatec overseas branches

○ global representations of heimatec

heimatec[®]

heimatec GmbH
Präzisionswerkzeuge
Carl-Benz-Str. 4
77871 Renchen
Germany

T +49 7843 9466 0
www.heimatec.com
info@heimatec.com

Please find the contact details of our worldwide trading partners on our website:
<https://heimatec.com/business-partners>