

Goodway  
**GTX 2600 -  
12-Stat.**



# High-tech from heimatec - heimatec - Tools and systems for productive turning and milling

heimatec belongs to the international technology and quality leaders for precision tools and specializes in the development and production of high-precision static and live tools for all CNC lathes, CNC turn-/mill machines and CNC machining centers.

The range of products\* spans from static BMT and VDI tool holders, live tools up to highly complex customer-specific individual solutions. heimatec, headquartered in Renchen, has a own subsidiary in Asia and India and numerous representatives as well as trading partners all over the world.

## \*OUR PRODCUTS

Static tool holders

Live tool units

Precision tools

Tools for turning and machining centres

Tools for swiss type lathes

Tool changing and uick-change systems


Tool systems for gear production

Digital tool management

This catalogue, including all its parts, is protected by copyright. Any use outside the restricted limitations of the Copyright Act without the consent of heimatec is inadmissible and liable to prosecution. This applies in particular to duplication, translation, microfilming and storage and processing in electronic systems.

**heimatec GmbH** reserves the right to make technical changes at any time without giving prior notice. This applies in particular to adjustments at any time to meet new or changed international standards, or in case of further developments of our products or manufacturing processes.

The current version of our General Terms and Conditions can be found on our website.

Part-#	Name	
<b>8 010 67 132</b>	<b>Axial drilling and milling head ER 40 AX UT</b>	
	Weight [kg]:	4.870
	Tool drive:	Flat (~DIN 1809)
	Shank size [mm]:	65.00
	Shank type:	BMT
	Tool adaption:	ER 40 A - u-tec
	Gear ratio [i]:	1:1
	Torque max [Nm]:	50
	Rotation max [1/min]:	5000
	Rotating direction:	same
	Coolant:	EXT
	Please note:	Combi bearing
<b>8 013 64 008</b>	<b>Axial drilling and milling head ER 16 AX UT</b>	
	Weight [kg]:	4.050
	Tool drive:	Flat (~DIN 1809)
	Shank size [mm]:	65.00
	Shank type:	BMT
	Tool adaption:	ER 16 A - u-tec
	Gear ratio [i]:	1:4
	Torque max [Nm]:	5
	Rotation max [1/min]:	24000
	Rotating direction:	same
	Coolant:	EXT
<b>8 013 64 009</b>	<b>Axial drilling and milling head ER 16 AX UT IC</b>	
	Tool drive:	Flat (~DIN 1809)
	Shank size [mm]:	65.00
	Shank type:	BMT
	Tool adaption:	ER 16 A - u-tec
	Gear ratio [i]:	1:4
	Torque max [Nm]:	5
	Rotation max [1/min]:	24000
	Rotating direction:	same
	Coolant:	IC/Ext
	Pressure max [bar]:	100
<b>8 019 61 000</b>	<b>Axial drilling and milling head CHC</b>	
	Weight [kg]:	10.690
	Notation:	180° reversible, IC-300
	Version:	no Splash-protection
	Tool drive:	Flat (~DIN 1809)
	Shank size [mm]:	65.00
	Shank type:	BMT
	Tool adaption:	CHC
	Gear ratio [i]:	1:0,75
	Rotation max [1/min]:	4500
	Rotating direction:	opposite
	Coolant:	no
	Center distance [mm]:	100
	Offset [mm]:	174,9

Part-#	Name
--------	------

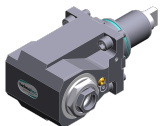
**8 030 66 169**



**Radial drilling and milling head ER 32 AS UT IC**

Weight [kg]: 10.550  
 Notation: 180° reversible  
 Tool drive: Flat (~DIN 1809)  
 Shank size [mm]: 65.00  
 Shank type: BMT  
 Tool adaption: ER 32 A - u-tec  
 Gear ratio [i]: 2:1  
 Torque max [Nm]: 80  
 Rotation max [1/min]: 3000  
 Rotating direction: opposite  
 Coolant: IC/Ext  
 Pressure max [bar]: 140  
 Please note: Rotating direction note; combi bearing  
 Center distance [mm]: 100

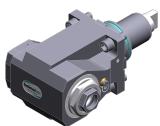
**8 030 66 260**



**Radial drilling and milling head ER 32 AS UT**

Weight [kg]: 9.260  
 Notation: 180° reversible  
 Tool drive: Flat (~DIN 1809)  
 Shank size [mm]: 65.00  
 Shank type: BMT  
 Tool adaption: ER 32 A - u-tec  
 Gear ratio [i]: 1:1  
 Torque max [Nm]: 70  
 Rotation max [1/min]: 10000  
 Rotating direction: same  
 Coolant: EXT  
 Center distance [mm]: 100

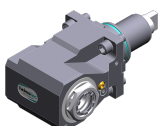
**8 030 66 261**



**Radial drilling and milling head ER 32 AS UT IC**




Weight [kg]: 9.440  
 Notation: 180° reversible  
 Tool drive: Flat (~DIN 1809)  
 Shank size [mm]: 65.00  
 Shank type: BMT  
 Tool adaption: ER 32 A - u-tec  
 Gear ratio [i]: 1:1  
 Torque max [Nm]: 70  
 Rotation max [1/min]: 10000  
 Rotating direction: same  
 Coolant: IC/Ext  
 Pressure max [bar]: 140  
 Center distance [mm]: 100

**8 030 66 269**



**Radial drilling and milling head ER 32 AX UT**

Notation: 180° reversible  
 Tool drive: Flat (~DIN 1809)  
 Shank size [mm]: 65.00  
 Shank type: BMT  
 Tool adaption: ER 32 A - u-tec  
 Gear ratio [i]: 1:1  
 Torque max [Nm]: 70  
 Rotation max [1/min]: 10000  
 Rotating direction: same  
 Coolant: EXT

Part-#	Name	
	Center distance [mm]:	100
<b>8 030 66 270</b>	<b>Radial drilling and milling head ER 32 AX UT IC</b>	
	Weight [kg]:	9.980
	Notation:	180° reversible
	Tool drive:	Flat (~DIN 1809)
	Shank size [mm]:	65.00
	Shank type:	BMT
	Tool adaption:	ER 32 A - u-tec
	Gear ratio [i]:	1:1
	Torque max [Nm]:	70
	Rotation max [1/min]:	10000
	Rotating direction:	same
	Coolant:	IC/Ext
	Pressure max [bar]:	140
	Center distance [mm]:	100
<b>8 030 67 165</b>	<b>Radial drilling and milling head ER 40 AX UT</b>	
	Weight [kg]:	10.540
	Notation:	180° reversible
	Tool drive:	Flat (~DIN 1809)
	Shank size [mm]:	65.00
	Shank type:	BMT
	Tool adaption:	ER 40 u-tec
	Gear ratio [i]:	1:1
	Torque max [Nm]:	50
	Rotation max [1/min]:	6000
	Rotating direction:	same
	Coolant:	EXT
	Please note:	Combi bearing
	Center distance [mm]:	100
<b>8 039 65 033</b>	<b>Radial drilling and milling head ER 25 AX UT</b>	
	Weight [kg]:	7.930
	Notation:	180° reversible
	Employment for:	Main- and sub spindle
	Version:	double spindle
	Tool drive:	Flat (~DIN 1809)
	Shank size [mm]:	65.00
	Shank type:	BMT
	Tool adaption:	ER 25 A - u-tec
	Gear ratio [i]:	1:2
	Torque max [Nm]:	16
	Rotation max [1/min]:	12000
	Rotating direction:	same/opposite
	Coolant:	EXT
	Please note:	stronger bearing
	Center distance [mm]:	80
<b>8 039 66 021</b>	<b>Radial drilling and milling head ER 32 AX UT</b>	
	Notation:	180° reversible
	Employment for:	Main- and sub spindle
	Version:	double spindle
	Tool drive:	Flat (~DIN 1809)
	Shank size [mm]:	65.00
	Shank type:	BMT
	Tool adaption:	ER 32 A - u-tec

Part-#	Name
--------	------

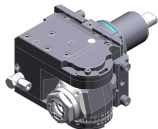
Gear ratio [i]: 1:1  
 Torque max [Nm]: 70  
 Rotation max [1/min]: 10000  
 Rotating direction: same/opposite  
 Coolant: EXT  
 Please note: stronger bearing  
 Center distance [mm]: 100

**8 039 66 025 Radial drilling and milling head ER 32 AS UT**



Weight [kg]: 8.700  
 Notation: 180° reversible  
 Employment for: Main- and sub spindle  
 Version: double spindle  
 Tool drive: Flat (~DIN 1809)  
 Shank size [mm]: 65.00  
 Shank type: BMT  
 Tool adaption: ER 32 A - u-tec  
 Gear ratio [i]: 1:1  
 Torque max [Nm]: 70  
 Rotation max [1/min]: 10000  
 Rotating direction: same/opposite  
 Coolant: EXT  
 Please note: stronger bearing  
 Center distance [mm]: 72

**8 043 65 000 Universal head +135°/-30° adj. ER25 AX UT**




Weight [kg]: 10.800  
 Notation: offset; 180° reversible  
 Tool drive: Flat (~DIN 1809)  
 Shank size [mm]: 65.00  
 Shank type: BMT  
 Tool adaption: ER 25 A - u-tec  
 Gear ratio [i]: 1:1  
 Torque max [Nm]: 25  
 Rotation max [1/min]: 6000  
 Rotating direction: same  
 Coolant: EXT  
 Please note: stronger bearing; note tool length!  
 Center distance [mm]: 69  
 Offset [mm]: 60

**8 050 65 011 Multispindle drilling head ER 25 AX UT**



Weight [kg]: 6.700  
 Version: 2-spindles  
 Tool drive: Flat (~DIN 1809)  
 Shank size [mm]: 65.00  
 Shank type: BMT  
 Tool adaption: ER 25 A - u-tec  
 Gear ratio [i]: 1:1  
 Torque max [Nm]: 32/Sp.  
 Rotation max [1/min]: 6000  
 Rotating direction: opposite  
 Coolant: EXT  
 Please note: stronger bearing

Part-#	Name	
<b>8 050 65 012</b>	<b>Multispindle drilling head ER 25 AX UT IC</b>	
	Weight [kg]:	6.740
	Tool drive:	Flat (~DIN 1809)
	Shank size [mm]:	65.00
	Shank type:	BMT
	Tool adaption:	ER 25 A - u-tec
	Gear ratio [i]:	1:1
	Torque max [Nm]:	32/Sp.
	Rotation max [1/min]:	6000
	Rotating direction:	opposite
	Coolant:	IC/Ext
	Pressure max [bar]:	25
	Please note:	stronger bearing
<b>8 100 16 000</b>	<b>Tool holder radial ø17,1 / minus</b>	
	Notation:	180° reversible
	Employment for:	Angle handpiece or extension CN01
	Tool drive:	Flat (~DIN 1809)
	Shank size [mm]:	65.00
	Shank type:	BMT
	Tool adaption:	Interface ø17,1 / M17x1
	Gear ratio [i]:	1:1
	Rotation max [1/min]:	6000
	Rotating direction:	opposite
	Coolant:	no
	Center distance [mm]:	100
<b>8 202 10 009</b>	<b>Basic holder longitudinal seat FN 12</b>	
	Weight [kg]:	1.490
	Notation:	180° reversible
	Shank type:	BMT
	Machine adaption:	Centering key b 18
	Tool adaption:	Interface FN 12
	Coolant:	EXT
<b>8 209 14 006</b>	<b>Adapter for VDI 40</b>	
	Weight [kg]:	7.650
	Notation:	180° reversible
	Employment for:	Main- and sub spindle
	Shank type:	BMT
	Machine adaption:	Centering key b 18
	Tool adaption:	DIN 69880 - 40
	Coolant:	EXT
	Center distance [mm]:	100
<b>8 224 12 014</b>	<b>Cut-off holder sq. 25</b>	
	Weight [kg]:	2.320




Part-#	Name	
<b>8 224 13 015</b>	<b>Cut-off holder SH 32</b>	
	Weight [kg]:	1.870
	Employment for:	Cut-off tool 32
	Version:	Clampshaft on turret side
	Shank type:	BMT
	Machine adaption:	Centering key b 18
	Tool adaption:	Clampshaft SH 32
	Coolant:	EXT
<b>8 224 14 026</b>	<b>Universal turning holder sq. 20 IC</b>	
	Weight [kg]:	3.795
	Shank type:	BMT
	Machine adaption:	Centering key b 18
	Tool adaption:	Sq. 20
		Sq. 20
	Coolant:	IC/Ext
	Pressure max [bar]:	100
	Please note:	Key rail
<b>8 224 14 027</b>	<b>Universal turning holder sq. 20 IC</b>	
	Weight [kg]:	4.600
	Notation:	180° reversible
	Shank type:	BMT
	Machine adaption:	Centering key b 18
	Tool adaption:	Sq. 20
		Sq. 20
	Coolant:	IC/Ext
	Pressure max [bar]:	100
	Please note:	Key rail
<b>8 224 15 005</b>	<b>Universal turning holder sq. 25</b>	
	Weight [kg]:	3.960
	Machine adaption:	Centering key b 18
	Tool adaption:	Sq. 25
	Coolant:	EXT
	Pressure max [bar]:	80
<b>8 224 15 006</b>	<b>Universal turning holder sq. 25</b>	
	Weight [kg]:	4.590
	Notation:	180° reversible
	Machine adaption:	Centering key b 18
	Tool adaption:	Sq. 25
		Sq. 25
	Coolant:	EXT
	Pressure max [bar]:	80
<b>8 224 15 015</b>	<b>Universal turning holder sq. 1"</b>	
	Weight [kg]:	3.930
	Machine adaption:	Centering key b 18
	Tool adaption:	Sq. 1" (25,4mm)
	Coolant:	EXT

Part-#	Name	
<b>8 224 15 016</b>	<b>Universal turning holder sq. 1"</b>	
	Weight [kg]:	4.580
	Shank type:	BMT
	Machine adaption:	Centering key b 18
	Tool adaption:	Sq. 1" (25,4mm)
		Sq. 1" (25,4mm)
	Coolant:	EXT
<b>8 224 15 052</b>	<b>Universal turning holder sq. 25 IC</b>	
	Shank type:	BMT
	Machine adaption:	Centering key b 18
	Tool adaption:	Sq. 25
		Sq. 25
	Coolant:	IC/Ext
	Pressure max [bar]:	100
	Please note:	Key rail
<b>8 224 15 053</b>	<b>Universal turning holder sq. 25 IC</b>	
	Weight [kg]:	4.690
	Notation:	180° reversible
	Shank type:	BMT
	Machine adaption:	Centering key b 18
	Tool adaption:	Sq. 25
		Sq. 25
	Coolant:	IC/Ext
	Pressure max [bar]:	100
	Please note:	Key rail
<b>8 224 15 056</b>	<b>Universal turning holder sq. 1" IC</b>	
	Notation:	180° reversible
	Shank type:	BMT
	Machine adaption:	Centering key b 18
	Tool adaption:	Sq. 1" (25,4mm)
		Sq. 1" (25,4mm)
	Coolant:	IC/Ext
	Pressure max [bar]:	100
	Please note:	Key rail
<b>8 229 16 012</b>	<b>Tool holder C 4 IC</b>	
	Weight [kg]:	3.300
	Notation:	180° reversible
	Version:	right
	Shank type:	BMT
	Machine adaption:	Centering key b 18
	Tool adaption:	heimatec Capto(TM) C 4
	Coolant:	IC
	Please note:	Check applicability; note tool length!
	Offset [mm]:	31


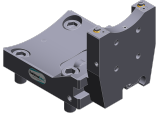


Part-#	Name	
8 240 15 026	<b>Tool holder ABS 50 IC/Ext</b>	
	Weight [kg]:	7.800
	Notation:	180° reversible
	Employment for:	Main- and sub spindle
	Shank type:	BMT
	Machine adaption:	Centering key b 18
	Tool adaption:	ABS 50
	Coolant:	IC/Ext
	Center distance [mm]:	100
8 240 16 026	<b>Collet chuck holder ER 32</b>	
	Weight [kg]:	6.820
	Notation:	180° reversible
	Shank type:	BMT
	Machine adaption:	Centering key b 18
	Tool adaption:	ER 32
	Coolant:	IC/Ext
	Please note:	Insert reversible
	Center distance [mm]:	100
8 240 17 050	<b>Boring bar holder Ø 25</b>	
	Weight [kg]:	10.730
	Notation:	180° reversible
	Employment for:	Main- and sub spindle
	Shank type:	BMT
	Machine adaption:	Centering key b 18
	Tool adaption:	Ø 25
	Coolant:	IC/Ext
	Pressure max [bar]:	80
	Center distance [mm]:	100
8 240 17 063	<b>Boring bar holder Ø 1 1/4"</b>	
	Weight [kg]:	10.500
	Notation:	180° reversible
	Employment for:	Main- and sub spindle
	Shank type:	BMT
	Machine adaption:	Centering key b 18
	Tool adaption:	Ø 1 1/4" (31,75mm)
	Coolant:	IC/Ext
	Center distance [mm]:	100
8 240 18 049	<b>Boring bar holder Ø 32</b>	
	Weight [kg]:	10.480
	Notation:	180° reversible
	Employment for:	Main- and sub spindle
	Shank type:	BMT
	Machine adaption:	Centering key b 18
	Tool adaption:	Ø 32
	Coolant:	IC/Ext
	Pressure max [bar]:	80
	Center distance [mm]:	100

Part-#	Name	
<b>8 240 18 091</b>	<b>Boring bar holder Ø 1 1/2"</b>	
	Weight [kg]:	10.110
	Notation:	180° reversible
	Shank type:	BMT
	Machine adaption:	Centering key b 18
	Tool adaption:	Ø 1 1/2" (38,1mm)
	Coolant:	IC/Ext
	Center distance [mm]:	100
<b>8 240 19 043</b>	<b>Boring bar holder Ø 40</b>	
	Weight [kg]:	10.050
	Notation:	180° reversible
	Employment for:	Main- and sub spindle
	Shank type:	BMT
	Machine adaption:	Centering key b 18
	Tool adaption:	Ø 40
	Coolant:	IC/Ext
	Pressure max [bar]:	80
	Center distance [mm]:	100
<b>8 240 19 051</b>	<b>Boring bar holder Ø 50</b>	
	Weight [kg]:	9.340
	Notation:	180° reversible
	Employment for:	Main- and sub spindle
	Shank type:	BMT
	Machine adaption:	Centering key b 18
	Tool adaption:	Ø 50
	Coolant:	IC/Ext
	Pressure max [bar]:	80
	Center distance [mm]:	100
<b>8 240 19 070</b>	<b>Boring bar holder Ø 50</b>	
	Weight [kg]:	11.220
	Notation:	180° reversible
	Employment for:	Main- and sub spindle
	Version:	Special
	Shank type:	BMT
	Machine adaption:	Centering key b 18
	Tool adaption:	Ø 50
	Coolant:	IC/Ext
	Center distance [mm]:	115
<b>8 240 19 137</b>	<b>Boring bar holder Ø 2"</b>	
	Weight [kg]:	7.060
	Notation:	180° reversible
	Shank type:	BMT
	Machine adaption:	Centering key b 18
	Tool adaption:	Ø 2" (50,8mm)
	Coolant:	IC/Ext
	Center distance [mm]:	80

Part-#	Name	
<b>8 244 15 005</b>	<b>Combi facing holder sq. 25</b>	
	Weight [kg]:	6.510
	Shank type:	BMT
	Machine adaption:	Centering key slot b 18
	Tool adaption:	Sq. 25
	Coolant:	EXT
	Pressure max [bar]:	80
<b>8 244 15 006</b>	<b>Combi facing holder sq. 1"</b>	
	Weight [kg]:	6.530
	Shank type:	BMT
	Machine adaption:	Centering key slot b 18
	Tool adaption:	Sq. 1" (25,4mm)
	Coolant:	EXT
<b>8 249 16 005</b>	<b>Double collet chuck holder ER 32</b>	
	Weight [kg]:	8.560
	Notation:	180° reversible
	Employment for:	Main- and sub spindle
	Shank type:	BMT
	Machine adaption:	Centering key b 18
	Tool adaption:	ER 32
	Coolant:	IC/Ext
	Center distance [mm]:	100
<b>8 251 15 003</b>	<b>Combi double turning holder sq. 25</b>	
	Notation:	180° reversible
	Shank type:	BMT
	Machine adaption:	Centering key b 18
	Tool adaption:	Sq. 25
		Sq. 25
		Sq. 25
		Sq. 25
	Coolant:	EXT
	Pressure max [bar]:	80
<b>8 251 15 008</b>	<b>Combi double turning holder sq. 1"</b>	
	Weight [kg]:	6.590
	Shank type:	BMT
	Machine adaption:	Centering key b 18
	Tool adaption:	Sq. 1" (25,4mm)
	Coolant:	EXT
<b>8 251 15 046</b>	<b>Combi double turning holder sq. 25 IC</b>	
	Weight [kg]:	6.520
	Notation:	180° reversible
	Shank type:	BMT
	Machine adaption:	Centering key b 18
	Tool adaption:	Sq. 25
		Sq. 25
		Sq. 25
		Sq. 25
	Coolant:	IC/Ext

Part-#	Name	
	Pressure max [bar]:	100
	Please note:	Key rail
<b>8 253 17 056</b>	<b>Double boring bar holder Ø 25</b>	
	Weight [kg]:	7.300
	Notation:	180° reversible
	Employment for:	Main- and sub spindle
	Machine adaption:	Centering key b 18
	Tool adaption:	Ø 25
	Coolant:	IC/Ext
	Please note:	Special
	Center distance [mm]:	70/110
<b>8 253 17 097</b>	<b>Multiple boring bar holder, double Ø 25</b>	
	Weight [kg]:	8.110
	Notation:	180° reversible
	Employment for:	Main- and sub spindle
	Shank type:	BMT
	Machine adaption:	Centering key b 18
	Tool adaption:	Ø 25
		Ø 25
		Ø 25
		Ø 25
		Ø 25
	Coolant:	IC/Ext
	Center distance [mm]:	36/75/114
<b>8 253 17 115</b>	<b>Multiple boring bar holder Ø 1 1/4"</b>	
	Weight [kg]:	8.950
	Notation:	180° reversible
	Shank type:	BMT
	Machine adaption:	Centering key b 18
	Tool adaption:	Ø 1 1/4" (31,75mm)
		Ø 1 1/4" (31,75mm)
	Coolant:	IC/Ext
	Center distance [mm]:	70/110
<b>8 253 18 005</b>	<b>Double boring bar holder Ø 1 1/4"</b>	
	Weight [kg]:	9.100
	Notation:	180° reversible
	Employment for:	Main- and sub spindle
	Shank type:	BMT
	Machine adaption:	Centering key b 18
	Tool adaption:	Ø 1 1/4" (31,75mm)
	Coolant:	IC/Ext
	Center distance [mm]:	56/107
<b>8 253 18 006</b>	<b>Double boring bar holder Ø 32</b>	
	Weight [kg]:	8.860
	Notation:	180° reversible
	Employment for:	Main- and sub spindle
	Shank type:	BMT
	Machine adaption:	Centering key b 18
	Tool adaption:	Ø 32
		Ø 32

Part-#	Name	
	Coolant:	IC/Ext
	Please note:	Special
	Center distance [mm]:	70/110
<b>8 259 12 007</b>	<b>Multiple turning holder sq. 25/1"</b>	
	Weight [kg]:	8.790
	Employment for:	Main- and sub spindle
	Version:	Y-axes offset
	Shank type:	BMT
	Machine adaption:	Centering key b 18
	Tool adaption:	Sq. 25/1" (25,4mm)
		Sq. 25/1" (25,4mm)
		Sq. 25/1" (25,4mm)
		Sq. 25/1" (25,4mm)
	Coolant:	EXT
<b>8 259 12 008</b>	<b>Multiple turning holder sq. 25/1"</b>	
	Weight [kg]:	5.000
	Notation:	180° reversible
	Version:	Y-axes offset
	Shank type:	BMT
	Machine adaption:	Centering key b 18
	Tool adaption:	Sq. 25/1" (25,4 mm)
		Sq. 25/1" (25,4 mm)
	Coolant:	EXT
<b>8 259 17 009</b>	<b>Double boring bar holder Ø 1"</b>	
	Notation:	180° reversible
	Employment for:	Main- and sub spindle
	Machine adaption:	Centering key b 18
	Tool adaption:	Ø 1" (25,4mm)
	Coolant:	IC/Ext
	Please note:	Special
	Center distance [mm]:	70/110
<b>8 320 12 017</b>	<b>Cut-off holder, height adjustable SH 26 IC</b>	
	Weight [kg]:	1.980
	Notation:	180° reversible
	Shank type:	BMT
	Machine adaption:	Centering key b 18
	Tool adaption:	Clampshaft SH 26
	Coolant:	IC/Ext
	Pressure max [bar]:	70
<b>8 320 13 005</b>	<b>Cut-off holder, height adjustable SH 32 IC</b>	
	Weight [kg]:	2.120
	Notation:	180° reversible
	Shank type:	BMT
	Machine adaption:	Centering key b 18
	Tool adaption:	Clampshaft SH 32
	Coolant:	IC/Ext
	Pressure max [bar]:	70

Part-#	Name	
<b>8 320 13 019</b>	<b>Cut-off holder, height adjustable SH 32 IC</b>	
	<p>Notation:</p> <p>Shank type:</p> <p>Machine adaption:</p> <p>Tool adaption:</p> <p>Coolant:</p> <p>Pressure max [bar]:</p> <p>Please note:</p>	<p>180° reversible</p> <p>BMT</p> <p>Centering key b 18</p> <p>Clampshaft SH 32</p> <p>IC/Ext</p> <p>70</p> <p>with offset cut-off tool holder; use</p>
<b>8 320 13 020</b>	<b>Cut-off holder, height adjustable SH 32 IC</b>	
	<p>Weight [kg]:</p> <p>Notation:</p> <p>Shank type:</p> <p>Machine adaption:</p> <p>Tool adaption:</p> <p>Coolant:</p> <p>Pressure max [bar]:</p> <p>Please note:</p>	<p>2.240</p> <p>180° reversible</p> <p>BMT</p> <p>Centering key b 18</p> <p>Clampshaft SH 32</p> <p>IC/Ext</p> <p>70</p> <p>Clampshaft internal</p>
<b>8 320 19 020</b>	<b>Cut-off holder, height adjustable 845 IC</b>	
	<p>Notation:</p> <p>Shank type:</p> <p>Machine adaption:</p> <p>Tool adaption:</p> <p>Coolant:</p> <p>Pressure max [bar]:</p> <p>Please note:</p>	<p>180° reversible</p> <p>BMT</p> <p>Centering key b 18</p> <p> System 845</p> <p>IC</p> <p>70</p> <p>Clampshaft internal</p>



● heimatec overseas branches

○ global representations of heimatec

**heimatec**<sup>®</sup>

**heimatec GmbH**  
Präzisionswerkzeuge  
Carl-Benz-Str. 4  
77871 Renchen  
Germany

T +49 7843 9466 0  
[www.heimatec.com](http://www.heimatec.com)  
[info@heimatec.com](mailto:info@heimatec.com)

Please find the contact details of our worldwide trading partners on our website:  
<https://heimatec.com/business-partners>