

SPINNER  
**TC 110-MC**



# High-tech from heimatec - heimatec - Tools and systems for productive turning and milling

heimatec belongs to the international technology and quality leaders for precision tools and specializes in the development and production of high-precision static and live tools for all CNC lathes, CNC turn-/mill machines and CNC machining centers.

The range of products\* spans from static BMT and VDI tool holders, live tools up to highly complex customer-specific individual solutions. heimatec, headquartered in Renchen, has a own subsidiary in Asia and India and numerous representatives as well as trading partners all over the world.

## \*OUR PRODCUTS

Static tool holders

Live tool units

Precision tools

Tools for turning and machining centres

Tools for swiss type lathes

Tool changing and uick-change systems

Tool systems for gear production

Digital tool management

This catalogue, including all its parts, is protected by copyright. Any use outside the restricted limitations of the Copyright Act without the consent of heimatec is inadmissible and liable to prosecution. This applies in particular to duplication, translation, microfilming and storage and processing in electronic systems.

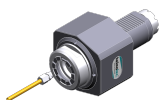
**heimatec GmbH** reserves the right to make technical changes at any time without giving prior notice. This applies in particular to adjustments at any time to meet new or changed international standards, or in case of further developments of our products or manufacturing processes.

The current version of our General Terms and Conditions can be found on our website.

# SPINNER

## TC 110-MC

Part-#	Name	
<b>8 010 56 033</b>	<b>Axial drilling and milling head ER 32 IC</b>	
	Weight [kg]:	5.470
	Tool drive:	Coupling
	Shank size [mm]:	50.00
	Shank type:	VDI
	Tool adaption:	ER 32
	Gear ratio [i]:	1:1
	Torque max [Nm]:	80
	Rotation max [1/min]:	4000
	Rotating direction:	same
	Coolant:	IC/Ext
	Pressure max [bar]:	25
<b>8 010 57 015</b>	<b>Axial drilling and milling head ER 40</b>	
	Weight [kg]:	5.390
	Tool drive:	Coupling
	Shank size [mm]:	50.00
	Shank type:	VDI
	Tool adaption:	ER 40
	Gear ratio [i]:	1:1
	Torque max [Nm]:	80
	Rotation max [1/min]:	4000
	Rotating direction:	same
	Coolant:	EXT
<b>8 010 57 036</b>	<b>Axial drilling and milling head ER 40 IC</b>	
	Weight [kg]:	5.590
	Tool drive:	Coupling
	Shank size [mm]:	50.00
	Shank type:	VDI
	Tool adaption:	ER 40
	Gear ratio [i]:	1:1
	Torque max [Nm]:	80
	Rotation max [1/min]:	4000
	Rotating direction:	same
	Coolant:	IC/Ext
	Pressure max [bar]:	25
<b>8 010 57 083</b>	<b>Axial drilling and milling head ER 40 AX UT</b>	
	Weight [kg]:	5.120
	Tool drive:	Coupling
	Shank size [mm]:	50.00
	Shank type:	VDI
	Tool adaption:	ER 40 A - u-tec
	Gear ratio [i]:	1:1
	Torque max [Nm]:	80
	Rotation max [1/min]:	4000
	Rotating direction:	same
	Coolant:	EXT
<b>8 010 57 084</b>	<b>Axial drilling and milling head ER 40 AX UT IC</b>	
	Weight [kg]:	5.280
	Tool drive:	Coupling
	Shank size [mm]:	50.00
	Shank type:	VDI
	Tool adaption:	ER 40 u-tec
	Gear ratio [i]:	1:1



# SPINNER

## TC 110-MC

Part-#	Name	
	Torque max [Nm]:	80
	Rotation max [1/min]:	4000
	Rotating direction:	same
	Coolant:	IC/Ext
	Pressure max [bar]:	25
<b>8 010 58 010</b>	<b>Axial drilling and milling head HT 6</b>	
	Weight [kg]:	5.360
	Tool drive:	Coupling
	Shank size [mm]:	50.00
	Tool adaption:	HT 6
	Gear ratio [i]:	1:1
	Torque max [Nm]:	80
	Rotation max [1/min]:	4000
	Rotating direction:	same
	Coolant:	EXT
<b>8 010 58 011</b>	<b>Axial drilling and milling head HT 6 IC</b>	
	Weight [kg]:	5.570
	Tool drive:	Coupling
	Shank size [mm]:	50.00
	Shank type:	VDI
	Tool adaption:	HT 6
	Gear ratio [i]:	1:1
	Torque max [Nm]:	80
	Rotation max [1/min]:	4000
	Rotating direction:	same
	Coolant:	IC/Ext
	Pressure max [bar]:	25
<b>8 011 55 011</b>	<b>Axial milling head universal arbor 22</b>	
	Weight [kg]:	5.350
	Tool drive:	Coupling
	Shank size [mm]:	50.00
	Shank type:	VDI
	Tool adaption:	Universal arbor 22
	Gear ratio [i]:	1:1
	Torque max [Nm]:	80
	Rotation max [1/min]:	4000
	Rotating direction:	same
	Coolant:	EXT
<b>8 011 56 006</b>	<b>Axial milling head universal arbor 27</b>	
	Weight [kg]:	7.120
	Tool drive:	Coupling
	Shank size [mm]:	50.00
	Shank type:	VDI
	Tool adaption:	Universal arbor 27
	Gear ratio [i]:	1:1
	Torque max [Nm]:	80
	Rotation max [1/min]:	3000
	Rotating direction:	same
	Coolant:	EXT
	Please note:	Taper roller bearings

Part-#	Name	
<b>8 013 54 021</b>	<b>Axial drilling and milling head ER 16 AX UT</b>	
	Weight [kg]:	3.520
	Tool drive:	Coupling
	Shank size [mm]:	50.00
	Shank type:	VDI
	Tool adaption:	ER 16 A - u-tec
	Gear ratio [i]:	1:4
	Torque max [Nm]:	5
	Rotation max [1/min]:	24000
	Rotating direction:	same
	Coolant:	EXT
	Please note:	round housing ø 98
<b>8 019 55 043</b>	<b>Axial drilling and milling head ER 25 AX UT</b>	
	Weight [kg]:	8.360
	Notation:	offset
	Version:	right
	Tool drive:	Coupling
	Shank size [mm]:	50.00
	Shank type:	VDI
	Tool adaption:	ER 25 A - u-tec
	Gear ratio [i]:	1:3
	Torque max [Nm]:	16
	Rotation max [1/min]:	15000
	Rotating direction:	opposite
	Coolant:	EXT
	Please note:	stronger bearing
	Offset [mm]:	50
<b>8 019 56 013</b>	<b>Axial drilling and milling head ER 32 IC</b>	
	Weight [kg]:	8.580
	Notation:	offset
	Version:	right
	Tool drive:	Coupling
	Shank size [mm]:	50.00
	Shank type:	VDI
	Tool adaption:	ER 32
	Gear ratio [i]:	1:2
	Torque max [Nm]:	40
	Rotation max [1/min]:	12000
	Rotating direction:	opposite
	Coolant:	IC/Ext
	Pressure max [bar]:	140
	Offset [mm]:	50
<b>8 019 56 015</b>	<b>Axial drilling and milling head ER 32</b>	
	Notation:	offset
	Version:	left; special
	Tool drive:	Coupling
	Shank size [mm]:	50.00
	Shank type:	VDI
	Tool adaption:	ER 32
	Gear ratio [i]:	2:1
	Torque max [Nm]:	80
	Rotation max [1/min]:	3000
	Rotating direction:	opposite
	Coolant:	EXT
	Please note:	stronger bearing

Part-#	Name	
	Offset [mm]:	50
<b>8 019 57 073</b>	<b>Axial drilling and milling head ER 40</b>	
	Weight [kg]:	14.160
	Notation:	offset
	Version:	right
	Tool drive:	Coupling
	Shank size [mm]:	50.00
	Shank type:	VDI
	Tool adaption:	ER 40 A - u-tec
	Gear ratio [i]:	1:1
	Torque max [Nm]:	100
	Rotation max [1/min]:	6000
	Rotating direction:	opposite
	Coolant:	EXT
	Offset [mm]:	75
<b>8 030 56 009</b>	<b>Radial drilling and milling head ER 32</b>	
	Weight [kg]:	5.920
	Tool drive:	Coupling
	Shank size [mm]:	50.00
	Shank type:	VDI
	Tool adaption:	ER 32
	Gear ratio [i]:	1:1
	Torque max [Nm]:	50
	Rotation max [1/min]:	5000
	Rotating direction:	opposite
	Coolant:	EXT
	Center distance [mm]:	69
<b>8 030 56 028</b>	<b>Radial drilling and milling head ER 32 IC</b>	
	Version:	right
	Tool drive:	Coupling
	Shank size [mm]:	50.00
	Shank type:	VDI
	Tool adaption:	ER 32
	Gear ratio [i]:	1:1
	Torque max [Nm]:	50
	Rotation max [1/min]:	5000
	Rotating direction:	opposite
	Coolant:	IC/Ext
	Pressure max [bar]:	140
	Center distance [mm]:	69
<b>8 030 57 013</b>	<b>Radial drilling and milling head ER 40</b>	
	Weight [kg]:	6.060
	Tool drive:	Coupling
	Shank size [mm]:	50.00
	Shank type:	VDI
	Tool adaption:	ER 40
	Gear ratio [i]:	1:1
	Torque max [Nm]:	50
	Rotation max [1/min]:	6000
	Rotating direction:	opposite
	Coolant:	EXT
	Center distance [mm]:	69

# SPINNER TC 110-MC

Part-#	Name
--------	------

**8 030 57 048 Radial drilling and milling head ER 40 IC**

Weight [kg]:	6.670
Version:	right
Tool drive:	Coupling
Shank size [mm]:	50.00
Shank type:	VDI
Tool adaption:	ER 40
Gear ratio [i]:	1:1
Torque max [Nm]:	50
Rotation max [1/min]:	6000
Rotating direction:	opposite
Coolant:	IC/Ext
Pressure max [bar]:	140
Center distance [mm]:	69

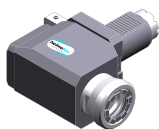
**8 030 57 097 Radial drilling and milling head ER 40**

Tool drive:	Coupling
Shank size [mm]:	50.00
Shank type:	VDI
Tool adaption:	ER 40
Gear ratio [i]:	1:2
Torque max [Nm]:	16
Rotation max [1/min]:	12000
Rotating direction:	opposite
Coolant:	EXT
Please note:	stronger bearing
Center distance [mm]:	69

**8 030 57 100 Radial drilling and milling head ER 40 AX UT**

Weight [kg]:	6.800
Tool drive:	Coupling
Shank size [mm]:	50.00
Shank type:	VDI
Tool adaption:	ER 40 A - u-tec
Gear ratio [i]:	1:1
Torque max [Nm]:	50
Rotation max [1/min]:	6000
Rotating direction:	opposite
Coolant:	EXT
Center distance [mm]:	69

**8 030 57 105 Radial drilling and milling head ER 40 AX UT IC**



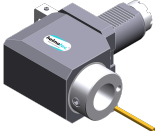
Weight [kg]:	7.300
Tool drive:	Coupling
Shank size [mm]:	50.00
Shank type:	VDI
Tool adaption:	ER 40 A - u-tec
Gear ratio [i]:	1:1
Torque max [Nm]:	50
Rotation max [1/min]:	6000
Rotating direction:	opposite
Coolant:	IC/Ext
Pressure max [bar]:	140
Center distance [mm]:	69

# SPINNER

## TC 110-MC

Part-#	Name
--------	------

<b>8 030 58 019</b>	<b>Radial drilling and milling head HT 6 IC</b>	
	Version:	right
	Tool drive:	Coupling
	Shank size [mm]:	50.00
	Shank type:	VDI
	Tool adaption:	HT 6
	Gear ratio [i]:	1:1
	Torque max [Nm]:	50
	Rotation max [1/min]:	6000
	Rotating direction:	opposite
	Coolant:	IC/Ext
	Pressure max [bar]:	25
	Please note:	stronger bearing
	Center distance [mm]:	69

<b>8 030 58 020</b>	<b>Radial drilling and milling head HT 6</b>	
	Weight [kg]:	7.140
	Version:	right
	Tool drive:	Coupling
	Shank size [mm]:	50.00
	Shank type:	VDI
	Tool adaption:	HT 6
	Gear ratio [i]:	1:1
	Torque max [Nm]:	50
	Rotation max [1/min]:	5000
	Rotating direction:	opposite
	Coolant:	EXT
	Please note:	stronger bearing
	Center distance [mm]:	69

<b>8 033 57 006</b>	<b>Radial drilling and milling head ER 40</b>	
	Weight [kg]:	9.730
	Notation:	offset
	Version:	right
	Tool drive:	Coupling
	Shank size [mm]:	50.00
	Shank type:	VDI
	Tool adaption:	ER 40
	Gear ratio [i]:	1:1
	Torque max [Nm]:	50
	Rotation max [1/min]:	6000
	Rotating direction:	same
	Coolant:	EXT
	Center distance [mm]:	110

<b>8 033 57 011</b>	<b>Radial drilling and milling head ER 40</b>	
	Weight [kg]:	10.320
	Notation:	offset
	Version:	right
	Tool drive:	Coupling
	Shank size [mm]:	50.00
	Shank type:	VDI
	Tool adaption:	ER 40
	Gear ratio [i]:	1:1
	Torque max [Nm]:	50
	Rotation max [1/min]:	6000
	Rotating direction:	same
	Coolant:	EXT

# SPINNER

## TC 110-MC

Part-#	Name	
	Please note:	stronger bearing
	Center distance [mm]:	110
<b>8 033 57 013</b>	<b>Radial drilling and milling head ER 40 IC</b>	
	Weight [kg]:	10.280
	Notation:	offset
	Version:	right
	Tool drive:	Coupling
	Shank size [mm]:	50.00
	Shank type:	VDI
	Tool adaption:	ER 40
	Gear ratio [i]:	1:1
	Torque max [Nm]:	50
	Rotation max [1/min]:	6000
	Rotating direction:	same
	Coolant:	IC/Ext
	Pressure max [bar]:	25
	Center distance [mm]:	110
<b>8 033 57 025</b>	<b>Radial drilling and milling head ER 40</b>	
	Weight [kg]:	9.700
	Notation:	offset
	Version:	right
	Tool drive:	Coupling
	Shank size [mm]:	50.00
	Shank type:	VDI
	Tool adaption:	ER 40
	Gear ratio [i]:	2:1
	Torque max [Nm]:	63
	Rotation max [1/min]:	3000
	Rotating direction:	same
	Coolant:	EXT
	Center distance [mm]:	110
<b>8 033 58 000</b>	<b>Radial drilling and milling head HT 6</b>	
	Weight [kg]:	10.340
	Notation:	offset
	Version:	right
	Tool drive:	Coupling
	Shank size [mm]:	50.00
	Shank type:	VDI
	Tool adaption:	HT 6
	Gear ratio [i]:	1:1
	Torque max [Nm]:	50
	Rotation max [1/min]:	4000
	Rotating direction:	same
	Coolant:	EXT
	Please note:	stronger bearing
	Center distance [mm]:	110
<b>8 033 58 014</b>	<b>Radial drilling and milling head HT 6 IC</b>	
	Weight [kg]:	10.930
	Notation:	offset
	Version:	right
	Tool drive:	Coupling
	Shank size [mm]:	50.00
	Shank type:	VDI
	Tool adaption:	HT 6

# SPINNER

## TC 110-MC

Part-#	Name	
	Gear ratio [i]:	1:1
	Torque max [Nm]:	50
	Rotation max [1/min]:	4000
	Rotating direction:	same
	Coolant:	IC/Ext
	Pressure max [bar]:	140
	Please note:	stronger bearing
	Center distance [mm]:	110
<b>8 039 52 002</b>	<b>Radial drilling and milling head Weldon 6</b>	
	Weight [kg]:	7.100
	Version:	left
	Tool drive:	Coupling
	Shank size [mm]:	50.00
	Shank type:	VDI
	Tool adaption:	Weldon (DIN 1835 b) 6 special
	Gear ratio [i]:	1:1
	Torque max [Nm]:	10
	Rotation max [1/min]:	6000
	Rotating direction:	opposite
	Coolant:	EXT
	Please note:	Special version
	Center distance [mm]:	185
<b>8 040 56 007</b>	<b>Universal head ± 90° adjustable ER 32</b>	
	Weight [kg]:	14.880
	Tool drive:	Coupling
	Shank size [mm]:	50.00
	Shank type:	VDI
	Tool adaption:	ER 32
	Gear ratio [i]:	1:1
	Torque max [Nm]:	50
	Rotation max [1/min]:	6000
	Rotating direction:	same
	Coolant:	EXT
	Center distance [mm]:	123
<b>8 200 51 002</b>	<b>Tool holder A2-50x135</b>	
	Weight [kg]:	9.200
	Shank size [mm]:	50.00
	Shank type:	VDI
<b>8 200 51 003</b>	<b>Tool holder A2-50x220</b>	
	Weight [kg]:	14.240
	Shank size [mm]:	50.00
	Shank type:	VDI
<b>8 200 51 004</b>	<b>Tool holder A2-50x400</b>	
	Weight [kg]:	24.700
	Shank size [mm]:	50.00
	Shank type:	VDI
<b>8 200 51 005</b>	<b>Plug Z2-50 S</b>	
	Weight [kg]:	2.260
	Shank size [mm]:	50.00
	Shank type:	VDI

# SPINNER

## TC 110-MC

Part-#	Name	
<b>8 200 51 006</b>	<b>Plug Z2-50 K</b>	
	Weight [kg]:	0.200
	Shank size [mm]:	50.00
	Shank type:	VDI
<b>8 200 55 000</b>	<b>Tool holder A1-50x125</b>	
	Weight [kg]:	19.800
	Shank size [mm]:	50.00
	Shank type:	VDI
<b>8 208 59 002</b>	<b>Test mandrel VDI 50x40x200</b>	
	Weight [kg]:	3.860
	Shank size [mm]:	50.00
	Shank type:	VDI
<b>8 210 52 000</b>	<b>Tool holder F 50-MK 2</b>	
	Shank size [mm]:	50.00
	Shank type:	VDI
	Tool adaption:	DIN 228 D - MK 2
	Coolant:	IC
<b>8 210 53 000</b>	<b>Tool holder F 50-MK 3</b>	
	Weight [kg]:	2.700
	Shank size [mm]:	50.00
	Shank type:	VDI
	Tool adaption:	DIN 228 D - MK 3
	Coolant:	IC
<b>8 210 53 001</b>	<b>Tool holder E2-50x 8</b>	
	Shank size [mm]:	50.00
	Shank type:	VDI
	Tool adaption:	Ø 8
	Coolant:	IC/Ext
<b>8 210 54 000</b>	<b>Tool holder E1-50x10</b>	
	Shank size [mm]:	50.00
	Shank type:	VDI
	Tool adaption:	Ø 10
	Coolant:	IC
<b>8 210 54 001</b>	<b>Tool holder E1-50x12</b>	
	Shank size [mm]:	50.00
	Shank type:	VDI
	Tool adaption:	Ø 12
	Coolant:	IC
<b>8 210 54 002</b>	<b>Tool holder E2-50x12</b>	
	Shank size [mm]:	50.00
	Shank type:	VDI
	Tool adaption:	Ø 12
	Coolant:	IC/Ext

# SPINNER

## TC 110-MC

Part-#	Name	
<b>8 210 54 003</b>	<b>Tool holder F 50-MK 4</b>	
	Weight [kg]:	2.760
	Shank size [mm]:	50.00
	Shank type:	VDI
	Tool adaption:	DIN 228 D - MK 4
	Coolant:	IC
<b>8 210 54 004</b>	<b>Short drill chuck VDI 50x13</b>	
	Shank size [mm]:	50.00
	Shank type:	VDI
	Coolant:	EXT
<b>8 210 54 005</b>	<b>Short drill chuck VDI 50x13 - IC</b>	
	Weight [kg]:	2.920
	Shank size [mm]:	50.00
	Shank type:	VDI
	Coolant:	IC
<b>8 210 54 006</b>	<b>Tool holder E2-50x10</b>	
	Shank size [mm]:	50.00
	Shank type:	VDI
	Tool adaption:	Ø 10
	Coolant:	IC/Ext
<b>8 210 55 000</b>	<b>Tool holder E1-50x16</b>	
	Shank size [mm]:	50.00
	Shank type:	VDI
	Tool adaption:	Ø 16
	Coolant:	IC
<b>8 210 55 001</b>	<b>Tool holder E2-50x16</b>	
	Shank size [mm]:	50.00
	Shank type:	VDI
	Tool adaption:	Ø 16
	Coolant:	IC/Ext
<b>8 210 55 002</b>	<b>Tool holder F 50-MK 5</b>	
	Weight [kg]:	8.320
	Shank size [mm]:	50.00
	Shank type:	VDI
	Tool adaption:	DIN 228 D - MK 5
	Coolant:	IC
<b>8 210 55 004</b>	<b>Short drill chuck VDI 50x16 - IC</b>	
	Weight [kg]:	3.120
	Shank size [mm]:	50.00
	Shank type:	VDI
	Coolant:	IC
<b>8 210 56 000</b>	<b>Tool holder E1-50x20</b>	
	Shank size [mm]:	50.00
	Shank type:	VDI
	Tool adaption:	Ø 20
	Coolant:	IC

# SPINNER

## TC 110-MC

Part-#	Name	
<b>8 210 56 001</b>	<b>Tool holder E2-50x20</b>	
	Shank size [mm]:	50.00
	Shank type:	VDI
	Tool adaption:	Ø 20
	Coolant:	IC/Ext
<b>8 210 57 000</b>	<b>Tool holder E2-50x25</b>	
	Shank size [mm]:	50.00
	Shank type:	VDI
	Tool adaption:	Ø 25
	Coolant:	IC/Ext
<b>8 210 57 001</b>	<b>Tool holder E1-50x25</b>	
	Shank size [mm]:	50.00
	Shank type:	VDI
	Tool adaption:	Ø 25
	Coolant:	IC
<b>8 210 57 002</b>	<b>Tool holder E3-50x C 25</b>	
	Weight [kg]:	3.180
	Shank size [mm]:	50.00
	Shank type:	VDI
	Tool adaption:	DIN 6388 - C 25
	Coolant:	IC
<b>8 210 57 003</b>	<b>Tool holder E4-50xER 40</b>	
	Shank size [mm]:	50.00
	Shank type:	VDI
	Tool adaption:	ER 40
	Coolant:	IC
<b>8 210 58 000</b>	<b>Tool holder E1-50x32</b>	
	Shank size [mm]:	50.00
	Shank type:	VDI
	Tool adaption:	Ø 32
	Coolant:	IC
<b>8 210 58 001</b>	<b>Tool holder E2-50x32</b>	
	Shank size [mm]:	50.00
	Shank type:	VDI
	Tool adaption:	Ø 32
	Coolant:	IC/Ext
<b>8 210 58 002</b>	<b>Tool holder E3-50x C 32</b>	
	Weight [kg]:	3.620
	Shank size [mm]:	50.00
	Shank type:	VDI
	Tool adaption:	DIN 6388 - C 32
	Coolant:	IC
<b>8 210 59 001</b>	<b>Tool holder E2-50x50</b>	
	Shank size [mm]:	50.00
	Shank type:	VDI
	Tool adaption:	Ø 50
	Coolant:	IC/Ext

# SPINNER

## TC 110-MC

Part-#	Name	
<b>8 210 59 002</b>	<b>Tool holder E1-50x40</b>	
	Shank size [mm]:	50.00
	Shank type:	VDI
	Tool adaption:	Ø 40
	Coolant:	IC
<b>8 210 59 003</b>	<b>Tool holder E1-50x50</b>	
	Shank size [mm]:	50.00
	Shank type:	VDI
	Tool adaption:	Ø 50
	Coolant:	IC
<b>8 210 59 004</b>	<b>Tool holder E2-50x40</b>	
	Shank size [mm]:	50.00
	Shank type:	VDI
	Tool adaption:	Ø 40
	Coolant:	IC/Ext
<b>8 210 59 005</b>	<b>Tool holder E1-50x44 - special</b>	
	Shank size [mm]:	50.00
	Shank type:	VDI
	Tool adaption:	Ø 44
	Coolant:	IC
	Please note:	Special version
<b>8 210 59 006</b>	<b>Tool holder E1-50x63 - special</b>	
	Shank size [mm]:	50.00
	Shank type:	VDI
	Tool adaption:	Ø 63
	Coolant:	IC
	Please note:	Special version
<b>8 214 54 000</b>	<b>Tool holder C1-50x32</b>	
	Weight [kg]:	5.660
	Shank size [mm]:	50.00
	Shank type:	VDI
	Tool adaption:	Sq. 32/25
	Coolant:	EXT
<b>8 214 54 001</b>	<b>Tool holder C3-50x32</b>	
	Weight [kg]:	6.080
	Shank size [mm]:	50.00
	Shank type:	VDI
	Tool adaption:	Sq. 32/25
	Coolant:	EXT
<b>8 234 54 000</b>	<b>Tool holder B1-50x32x55</b>	
	Shank size [mm]:	50.00
	Shank type:	VDI
	Tool adaption:	Sq. 32/25
	Coolant:	EXT

# SPINNER

## TC 110-MC

Part-#	Name	
<b>8 234 54 001</b>	<b>Tool holder B3-50x32x55</b>	
	Weight [kg]:	4.420
	Shank size [mm]:	50.00
	Shank type:	VDI
	Tool adaption:	Sq. 32/25
	Coolant:	EXT
<b>8 234 54 002</b>	<b>Tool holder B5-50x32x55</b>	
	Weight [kg]:	5.220
	Shank size [mm]:	50.00
	Shank type:	VDI
	Tool adaption:	Sq. 32/25
	Coolant:	EXT
<b>8 234 54 003</b>	<b>Tool holder B7-50x32x55</b>	
	Weight [kg]:	5.640
	Shank size [mm]:	50.00
	Shank type:	VDI
	Tool adaption:	Sq. 32/25
	Coolant:	EXT
<b>8 320 53 004</b>	<b>Cut-off holder, height adjustable SH 32 IC</b>	
	Version:	universal
	Shank size [mm]:	50.00
	Shank type:	VDI
	Tool adaption:	Clampshaft SH 32
	Coolant:	IC/Ext
	Pressure max [bar]:	70



● heimatec overseas branches

○ global representations of heimatec

**heimatec**<sup>®</sup>

**heimatec GmbH**  
Präzisionswerkzeuge  
Carl-Benz-Str. 4  
77871 Renchen  
Germany

T +49 7843 9466 0  
[www.heimatec.com](http://www.heimatec.com)  
[info@heimatec.com](mailto:info@heimatec.com)

Please find the contact details of our worldwide trading partners on our website:  
<https://heimatec.com/business-partners>