

HAAS  
CAT 40



# High-tech from heimatec - heimatec - Tools and systems for productive turning and milling

heimatec belongs to the international technology and quality leaders for precision tools and specializes in the development and production of high-precision static and live tools for all CNC lathes, CNC turn-/mill machines and CNC machining centers.

The range of products\* spans from static BMT and VDI tool holders, live tools up to highly complex customer-specific individual solutions. heimatec, headquartered in Renchen, has a own subsidiary in Asia and India and numerous representatives as well as trading partners all over the world.

## \*OUR PRODCUTS

Static tool holders

Live tool units

Precision tools

Tools for turning and machining centres

Tools for swiss type lathes

Tool changing and uick-change systems

Tool systems for gear production

Digital tool management

This catalogue, including all its parts, is protected by copyright. Any use outside the restricted limitations of the Copyright Act without the consent of heimatec is inadmissible and liable to prosecution. This applies in particular to duplication, translation, microfilming and storage and processing in electronic systems.

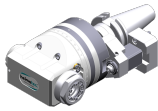
**heimatec GmbH** reserves the right to make technical changes at any time without giving prior notice. This applies in particular to adjustments at any time to meet new or changed international standards, or in case of further developments of our products or manufacturing processes.

The current version of our General Terms and Conditions can be found on our website.

Part-#	Name
--------	------

<b>7 030 45 026</b>	<b>Angle head ER 25 AX UT</b>
Weight [kg]:	5.120
Notation:	Size 4 standard
Version:	360° turnable
Tool drive:	Key slot
Machine adaption:	ANSI b 5.50 CAT 40 inch
Tool adaption:	ER 25 A - u-tec
Gear ratio [i]:	1:1
Torque max [Nm]:	25
Rotation max [1/min]:	8000
Rotating direction:	opposite
Coolant:	no
Please note:	incl. torque arm and stop block
Center distance [mm]:	125,5
Distance: centerline locator pin size 4 [mm]:	59.000
Diameter fixing bolt [mm]:	20.000
with width [mm]:	18.000
Distance: gauge line of housing/gauge line taper [mm]:	60.000
Distance: locking device/gauge line of housing [mm]:	42.000
Distance: end face fixing bolt/gauge line of housing [mm]:	47.000

<b>7 030 45 029</b>	<b>Angle head ER 25 AX UT IC</b>
Weight [kg]:	6.000
Notation:	Size 4 standard
Version:	360° turnable
Tool drive:	Key slot
Machine adaption:	ANSI b 5.50/ CAT 40 inch
Tool adaption:	ER 25 A - u-tec
Gear ratio [i]:	1:1
Torque max [Nm]:	25
Rotation max [1/min]:	8000
Rotating direction:	same
Coolant:	IC
Pressure max [bar]:	100
Please note:	incl. torque arm and stop block
Center distance [mm]:	143,5
Distance: centerline locator pin size 4 [mm]:	65.000
Diameter fixing bolt [mm]:	20.000
with width [mm]:	18.000
Distance: gauge line of housing/gauge line taper [mm]:	60.000
Distance: locking device/gauge line of housing [mm]:	53.000
Distance: end face fixing bolt/gauge line of housing [mm]:	60.000



<b>7 030 46 054</b>	<b>Angle head ER 32 AX UT</b>
Weight [kg]:	8.730
Notation:	Size 4 large
Version:	360° turnable
Tool drive:	Key slot
Machine adaption:	ANSI b 5.50 CAT 40 inch
Tool adaption:	ER 32 A - u-tec
Gear ratio [i]:	1:1
Torque max [Nm]:	60

Part-#

Name

Rotation max [1/min]: 8000  
 Rotating direction: opposite  
 Coolant: no  
 Please note: incl. torque arm  
 Center distance [mm]: 187  
 Distance: centerline locator pin size 5 [mm]: 65.000  
 Diameter fixing bolt [mm]: 20.000  
 with width [mm]: 18.000  
 Distance: gauge line of housing/gauge line taper [mm]: 67.000  
 Distance: locking device/gauge line of housing [mm]: 60.000  
 Distance: end face fixing bolt/gauge line of housing [mm]: 67.000

7 033 43 015

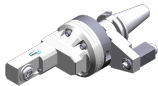
**Angle head ER 11 AX**

Weight [kg]: 4.970  
 Notation: Size 4 offset slim  
 Version: 360° turnable; long  
 Tool drive: Key slot  
 Machine adaption: ANSI b 5.50 CAT 40 inch  
 Tool adaption: ER 11 A  
 Gear ratio [i]: 1:1  
 Torque max [Nm]: 10  
 Rotation max [1/min]: 8000  
 Rotating direction: same  
 Coolant: no  
 Please note: incl. torque arm and stop block  
 Center distance [mm]: 205,5  
 Distance: centerline locator pin [mm]: 59.000  
 Distance: centerline locator pin size 4 [mm]: 59.000  
 Diameter fixing bolt [mm]: 20.000  
 with width [mm]: 18.000  
 Distance: gauge line of housing/gauge line taper [mm]: 60.000  
 Distance: locking device/gauge line of housing [mm]: 42.000  
 Distance: end face fixing bolt/gauge line of housing [mm]: 47.000

7 033 43 036

**Angle head ER 11 AX**

Weight [kg]: 4.900  
 Notation: Size 4 offset slim  
 Version: 360° turnable; long  
 Tool drive: Key slot  
 Machine adaption: ANSI b 5.50 CAT 40 inch  
 Tool adaption: ER 11 A  
 Gear ratio [i]: 1:1  
 Torque max [Nm]: 10  
 Rotation max [1/min]: 8000  
 Rotating direction: same  
 Coolant: no  
 Please note: incl. torque arm without stop block  
 Center distance [mm]: 205,5  
 Distance: centerline locator pin [mm]: 90.000  
 Distance: centerline locator pin size 4 [mm]: 90.000  
 Diameter fixing bolt [mm]: 20.000  
 with width [mm]: 18.000



Part-#	Name
--------	------

Distance: gauge line of housing/gauge line taper [mm]:	60.000
Distance: locking device/gauge line of housing [mm]:	51.000
Distance: end face fixing bolt/gauge line of housing [mm]:	60.000

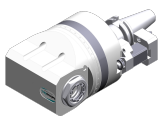
**7 033 44 022    Angle head ER 20 AX UT**

Weight [kg]:	5.795
Notation:	Size 4 offset slim
Version:	360° turnable; long
Tool drive:	Key slot
Machine adaption:	ANSI b 5.50 CAT 40 inch
Tool adaption:	ER 20 A - u-tec
Gear ratio [i]:	1:1
Torque max [Nm]:	25
Rotation max [1/min]:	8000
Rotating direction:	same
Coolant:	no
Please note:	incl. torque arm and stop block
Center distance [mm]:	232
Distance: centerline locator pin [mm]:	59.000
Distance: centerline locator pin size 4 [mm]:	59.000
Diameter fixing bolt [mm]:	20.000
with width [mm]:	18.000
Distance: gauge line of housing/gauge line taper [mm]:	60.000
Distance: locking device/gauge line of housing [mm]:	42.000
Distance: end face fixing bolt/gauge line of housing [mm]:	47.000

**7 033 45 019    Angle head ER 25**

Weight [kg]:	5.210
Notation:	Size 4 standard offset
Version:	360° turnable
Tool drive:	Key slot
Machine adaption:	ANSI b 5.50 CAT 40 inch
Tool adaption:	ER 25
Gear ratio [i]:	1:1
Torque max [Nm]:	25
Rotation max [1/min]:	8000
Rotating direction:	same
Coolant:	no
Please note:	incl. torque arm and stop block
Center distance [mm]:	160
Distance: centerline locator pin [mm]:	59.000
Distance: centerline locator pin size 4 [mm]:	59.000
Diameter fixing bolt [mm]:	20.000
with width [mm]:	18.000
Distance: gauge line of housing/gauge line taper [mm]:	60.000
Distance: locking device/gauge line of housing [mm]:	42.000
Distance: end face fixing bolt/gauge line of housing [mm]:	47.000

Part-#	Name	
<b>7 033 45 028</b>	<b>Angle head ER 25</b>	
	Notation:	Size 4 standard offset
	Version:	360° turnable
	Tool drive:	Key slot
	Machine adaption:	ANSI b 5.50 CAT 40 inch
	Tool adaption:	ER 25
	Gear ratio [i]:	1:1
	Torque max [Nm]:	25
	Rotation max [1/min]:	8000
	Rotating direction:	same
	Coolant:	no
	Please note:	incl. torque arm
	Center distance [mm]:	160
	Distance: centerline locator pin [mm]:	59.000
	Distance: centerline locator pin size 4 [mm]:	59.000
	Diameter fixing bolt [mm]:	20.000
	with width [mm]:	18.000
	Distance: gauge line of housing/gauge line taper [mm]:	60.000
	Distance: locking device/gauge line of housing [mm]:	42.000
	Distance: end face fixing bolt/gauge line of housing [mm]:	47.000
<b>7 039 44 061</b>	<b>Angle head ER 20 AX UT</b>	
	Weight [kg]:	6.800
	Notation:	Size 4 standard double spindle
	Version:	360° turnable
	Tool drive:	Key slot
	Machine adaption:	ANSI b 5.50 CAT 40 inch
	Tool adaption:	ER 20 A - u-tec
	Gear ratio [i]:	1:1
	Torque max [Nm]:	25
	Rotation max [1/min]:	8000
	Rotating direction:	same/opposite
	Coolant:	no
	Please note:	incl. torque arm and stop block
	Center distance [mm]:	125,5
	Distance: centerline locator pin [mm]:	59.000
	Distance: centerline locator pin size 4 [mm]:	59.000
	Diameter fixing bolt [mm]:	20.000
	with width [mm]:	18.000
	Distance: gauge line of housing/gauge line taper [mm]:	60.000
	Distance: locking device/gauge line of housing [mm]:	42.000
	Distance: end face fixing bolt/gauge line of housing [mm]:	47.000
<b>7 039 46 060</b>	<b>Angle head ER 32 AX UT</b>	
	Weight [kg]:	10.600
	Notation:	Size 4 large double spindle
	Version:	360° turnable
	Tool drive:	Key slot
	Machine adaption:	ANSI b 5.50 CAT 40 inch
	Tool adaption:	ER 32 A - u-tec
	Gear ratio [i]:	1:1
	Torque max [Nm]:	60

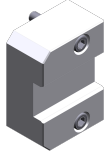


Part-#	Name	
	Rotation max [1/min]:	8000
	Rotating direction:	same/opposite
	Coolant:	no
	Please note:	incl. torque arm and stop block
	Center distance [mm]:	187
	Distance: centerline locator pin [mm]:	65.000
	Distance: centerline locator pin size 4 [mm]:	65.000
	Diameter fixing bolt [mm]:	20.000
	with width [mm]:	18.000
	Distance: gauge line of housing/gauge line taper [mm]:	67.000
	Distance: locking device/gauge line of housing [mm]:	49.000
	Distance: end face fixing bolt/gauge line of housing [mm]:	54.000
<b>7 040 44 010</b>	<b>Angle head ± 90° adjustable ER 16 AX UT</b>	
	Weight [kg]:	6.180
	Notation:	Size 4
	Version:	360° turnable
	Tool drive:	Key slot
	Machine adaption:	ANSI b 5.50 CAT 40 inch
	Tool adaption:	ER 16 A - u-tec
	Gear ratio [i]:	1:1
	Torque max [Nm]:	25
	Rotation max [1/min]:	8000
	Rotating direction:	opposite
	Coolant:	no
	Please note:	incl. torque arm and stop block
	Center distance [mm]:	167,5
	Distance: centerline locator pin size 4 [mm]:	59.000
	Diameter fixing bolt [mm]:	20.000
	with width [mm]:	18.000
	Distance: gauge line of housing/gauge line taper [mm]:	60.000
	Distance: locking device/gauge line of housing [mm]:	42.000
	Distance: end face fixing bolt/gauge line of housing [mm]:	47.000
<b>7 040 44 019</b>	<b>Angle head ± 90° adjustable ER 16 AX UT</b>	
	Weight [kg]:	5.800
	Notation:	Size 4
	Version:	360° turnable
	Tool drive:	Key slot
	Machine adaption:	ANSI b 5.50 CAT 40 inch
	Tool adaption:	ER 16 A - u-tec
	Gear ratio [i]:	1:1
	Torque max [Nm]:	25
	Rotation max [1/min]:	8000
	Rotating direction:	opposite
	Coolant:	no
	Please note:	incl. torque arm without stop block
	Center distance [mm]:	167,5
	Distance: centerline locator pin size 4 [mm]:	59.000
	Diameter fixing bolt [mm]:	20.000
	with width [mm]:	18.000

Part-#	Name
	Distance: gauge line of housing/gauge line taper [mm]: 60.000
	Distance: locking device/gauge line of housing [mm]: 42.000
	Distance: end face fixing bolt/gauge line of housing [mm]: 47.000
<b>7 040 45 011</b>	<b>Angle head ± 90° adjustable ER 25 AX UT</b>
	Weight [kg]: 6.980
	Notation: Size 4
	Version: 360° turnable
	Tool drive: Key slot
	Machine adaption: ANSI b 5.50 CAT 40 inch
	Tool adaption: ER 25 A - u-tec
	Gear ratio [i]: 1:1
	Torque max [Nm]: 25
	Rotation max [1/min]: 8000
	Rotating direction: opposite
	Coolant: no
	Please note: incl. torque arm and stop block
	Center distance [mm]: 167,5
	Distance: centerline locator pin size 4 [mm]: 59.000
	Diameter fixing bolt [mm]: 20.000
	with width [mm]: 18.000
	Distance: gauge line of housing/gauge line taper [mm]: 60.000
	Distance: locking device/gauge line of housing [mm]: 42.000
	Distance: end face fixing bolt/gauge line of housing [mm]: 47.000
<b>7 049 45 011</b>	<b>Angle head ± 90° adjustable ER 25</b>
	Notation: Size 4
	Version: 360° turnable
	Tool drive: Key slot
	Machine adaption: ANSI b 5.50/ CAT 40 inch
	Tool adaption: ER 25
	Gear ratio [i]: 1:1
	Torque max [Nm]: 25
	Rotation max [1/min]: 8000
	Rotating direction: same
	Coolant: no
	Please note: incl. torque arm and stop block
	Center distance [mm]: 167,5
	Distance: gauge line of housing/gauge line taper [mm]: 60.000
<b>7 742 99 013</b>	<b>Stop-block for Haas SK/CAT/BT 40</b>
	Weight [kg]: 0.320
<b>7 742 99 048</b>	<b>Stop-block for Haas SK/CAT/BT 40</b>
	Weight [kg]: 0.320
	Version: Special
	Coolant: no

Part-#	Name
--------	------

7 742 99 057



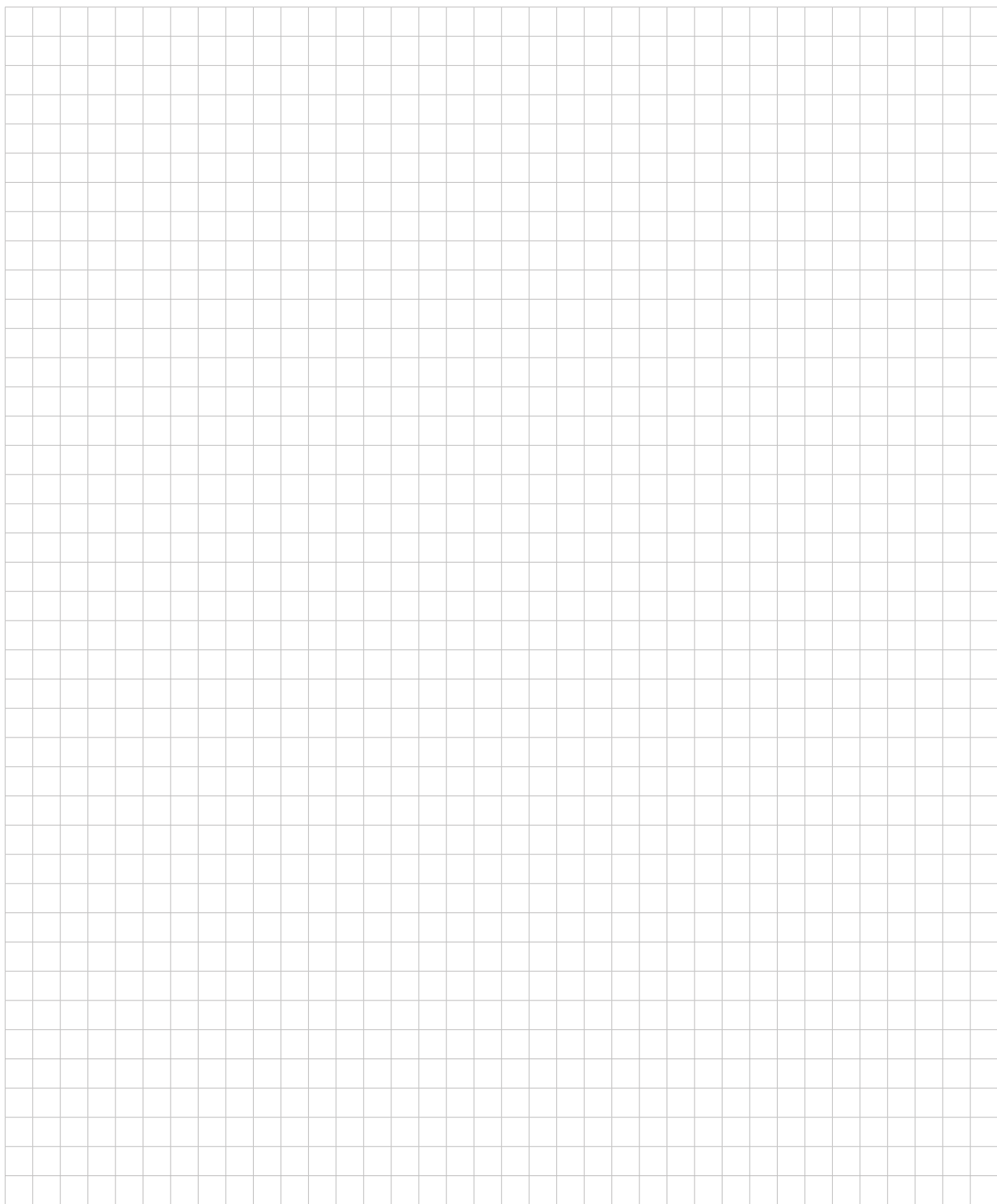
**Stop-block for Haas SK/CAT/BT 40**

Weight [kg]: 0.346  
Coolant: no

7 744 99 027

**Support flange with DMS Haas size 4**

Weight [kg]: 0.660  
Notation: Size 4  
Distance: centerline locator pin [mm]: 59.000  
Diameter fixing bolt [mm]: 20.000  
with width [mm]: 18.000  
Distance: locking device/gauge line of housing [mm]: 42.000  
Distance: end face fixing bolt/gauge line of housing [mm]: 47.000



## heimatec.u-tec®

heimatec.com

Products / Tool change systems /  
u-tec® Tool-changing system



versions see catalog



## heimatec.easy-quick

heimatec.com

Products / Tool change systems /  
easy-quick HT quick-changing system



versions see catalog



## heimatec.Capto™

heimatec.com

Products / Tool change systems /  
heimatec.Capto™ quick-changing system



versions see catalog



## heimatec.accessories

heimatec.com

Products / Accessories



versions see catalog





● heimatec overseas branches

○ global representations of heimatec

**heimatec**<sup>®</sup>

**heimatec GmbH**  
Präzisionswerkzeuge  
Carl-Benz-Str. 4  
77871 Renchen  
Germany

T +49 7843 9466 0  
[www.heimatec.com](http://www.heimatec.com)  
[info@heimatec.com](mailto:info@heimatec.com)

Please find the contact details of our worldwide trading partners on our website:  
<https://heimatec.com/business-partners>