

SPINNER
TC 110-SMCY



High-tech from heimatec - heimatec - Tools and systems for productive turning and milling

heimatec belongs to the international technology and quality leaders for precision tools and specializes in the development and production of high-precision static and live tools for all CNC lathes, CNC turn-/mill machines and CNC machining centers.

The range of products* spans from static BMT and VDI tool holders, live tools up to highly complex customer-specific individual solutions. heimatec, headquartered in Renchen, has a own subsidiary in Asia and India and numerous representatives as well as trading partners all over the world.

*OUR PRODCUTS

Static tool holders

Live tool units

Precision tools

Tools for turning and machining centres

Tools for swiss type lathes

Tool changing and uick-change systems

Tool systems for gear production

Digital tool management

This catalogue, including all its parts, is protected by copyright. Any use outside the restricted limitations of the Copyright Act without the consent of heimatec is inadmissible and liable to prosecution. This applies in particular to duplication, translation, microfilming and storage and processing in electronic systems.

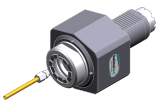
heimatec GmbH reserves the right to make technical changes at any time without giving prior notice. This applies in particular to adjustments at any time to meet new or changed international standards, or in case of further developments of our products or manufacturing processes.

The current version of our General Terms and Conditions can be found on our website.

SPINNER

TC 110-SMCY

Part-#	Name	
8 010 56 033	Axial drilling and milling head ER 32 IC	
	Weight [kg]:	5.470
	Tool drive:	Coupling
	Shank size [mm]:	50.00
	Shank type:	VDI
	Tool adaption:	ER 32
	Gear ratio [i]:	1:1
	Torque max [Nm]:	80
	Rotation max [1/min]:	4000
	Rotating direction:	same
	Coolant:	IC/Ext
	Pressure max [bar]:	25
8 010 57 015	Axial drilling and milling head ER 40	
	Weight [kg]:	5.390
	Tool drive:	Coupling
	Shank size [mm]:	50.00
	Shank type:	VDI
	Tool adaption:	ER 40
	Gear ratio [i]:	1:1
	Torque max [Nm]:	80
	Rotation max [1/min]:	4000
	Rotating direction:	same
	Coolant:	EXT
8 010 57 036	Axial drilling and milling head ER 40 IC	
	Weight [kg]:	5.590
	Tool drive:	Coupling
	Shank size [mm]:	50.00
	Shank type:	VDI
	Tool adaption:	ER 40
	Gear ratio [i]:	1:1
	Torque max [Nm]:	80
	Rotation max [1/min]:	4000
	Rotating direction:	same
	Coolant:	IC/Ext
	Pressure max [bar]:	25
8 010 57 083	Axial drilling and milling head ER 40 AX UT	
	Weight [kg]:	5.120
	Tool drive:	Coupling
	Shank size [mm]:	50.00
	Shank type:	VDI
	Tool adaption:	ER 40 A - u-tec
	Gear ratio [i]:	1:1
	Torque max [Nm]:	80
	Rotation max [1/min]:	4000
	Rotating direction:	same
	Coolant:	EXT
8 010 57 084	Axial drilling and milling head ER 40 AX UT IC	
	Weight [kg]:	5.280
	Tool drive:	Coupling
	Shank size [mm]:	50.00
	Shank type:	VDI
	Tool adaption:	ER 40 u-tec
	Gear ratio [i]:	1:1



SPINNER

TC 110-SMCY

Part-#	Name	
	Torque max [Nm]:	80
	Rotation max [1/min]:	4000
	Rotating direction:	same
	Coolant:	IC/Ext
	Pressure max [bar]:	25
8 010 58 010	Axial drilling and milling head HT 6	
	Weight [kg]:	5.360
	Tool drive:	Coupling
	Shank size [mm]:	50.00
	Tool adaption:	HT 6
	Gear ratio [i]:	1:1
	Torque max [Nm]:	80
	Rotation max [1/min]:	4000
	Rotating direction:	same
	Coolant:	EXT
8 010 58 011	Axial drilling and milling head HT 6 IC	
	Weight [kg]:	5.570
	Tool drive:	Coupling
	Shank size [mm]:	50.00
	Shank type:	VDI
	Tool adaption:	HT 6
	Gear ratio [i]:	1:1
	Torque max [Nm]:	80
	Rotation max [1/min]:	4000
	Rotating direction:	same
	Coolant:	IC/Ext
	Pressure max [bar]:	25
8 011 55 011	Axial milling head universal arbor 22	
	Weight [kg]:	5.350
	Tool drive:	Coupling
	Shank size [mm]:	50.00
	Shank type:	VDI
	Tool adaption:	Universal arbor 22
	Gear ratio [i]:	1:1
	Torque max [Nm]:	80
	Rotation max [1/min]:	4000
	Rotating direction:	same
	Coolant:	EXT
8 011 56 006	Axial milling head universal arbor 27	
	Weight [kg]:	7.120
	Tool drive:	Coupling
	Shank size [mm]:	50.00
	Shank type:	VDI
	Tool adaption:	Universal arbor 27
	Gear ratio [i]:	1:1
	Torque max [Nm]:	80
	Rotation max [1/min]:	3000
	Rotating direction:	same
	Coolant:	EXT
	Please note:	Taper roller bearings

SPINNER
TC 110-SMCY

Part-#	Name	
8 013 54 021	Axial drilling and milling head ER 16 AX UT	
	Weight [kg]:	3.520
	Tool drive:	Coupling
	Shank size [mm]:	50.00
	Shank type:	VDI
	Tool adaption:	ER 16 A - u-tec
	Gear ratio [i]:	1:4
	Torque max [Nm]:	5
	Rotation max [1/min]:	24000
	Rotating direction:	same
	Coolant:	EXT
	Please note:	round housing ø 98
8 019 55 061	Axial milling head universal arbor 22	
	Weight [kg]:	8.580
	Notation:	offset
	Version:	left
	Tool drive:	Coupling
	Shank size [mm]:	50.00
	Shank type:	VDI
	Tool adaption:	Universal arbor 22
	Gear ratio [i]:	2:1
	Torque max [Nm]:	80
	Rotation max [1/min]:	3000
	Rotating direction:	opposite
	Coolant:	EXT
	Please note:	stronger bearing
8 019 56 019	Axial drilling and milling head ER 32	
	Notation:	offset
	Version:	left
	Tool drive:	Coupling
	Shank size [mm]:	50.00
	Shank type:	VDI
	Tool adaption:	ER 32
	Gear ratio [i]:	1:2
	Torque max [Nm]:	40
	Rotation max [1/min]:	10000
	Rotating direction:	opposite
	Coolant:	EXT
	Offset [mm]:	50
8 019 56 027	Axial drilling and milling head ER 32 AX UT	
	Weight [kg]:	8.200
	Notation:	offset
	Version:	left
	Tool drive:	Coupling
	Shank size [mm]:	50.00
	Shank type:	VDI
	Tool adaption:	ER 32 A - u-tec
	Gear ratio [i]:	1:2
	Torque max [Nm]:	40
	Rotation max [1/min]:	10000
	Rotating direction:	opposite
	Coolant:	EXT
	Offset [mm]:	50

SPINNER
TC 110-SMCY

Part-#	Name	
8 030 56 160	Radial drilling and milling head ER 32 AX UT	
	Weight [kg]:	8.840
	Employment for:	Main spindle
	Version:	left
	Tool drive:	Coupling
	Shank size [mm]:	50.00
	Shank type:	VDI
	Tool adaption:	ER 32 A - u-tec
	Gear ratio [i]:	1:1
	Torque max [Nm]:	50
	Rotation max [1/min]:	6000
	Rotating direction:	opposite
	Coolant:	EXT
	Center distance [mm]:	105
8 030 57 036	Radial drilling and milling head ER 40	
	Weight [kg]:	9.060
	Employment for:	Main spindle
	Version:	left
	Tool drive:	Coupling
	Shank size [mm]:	50.00
	Shank type:	VDI
	Tool adaption:	ER 40
	Gear ratio [i]:	1:1
	Torque max [Nm]:	50
	Rotation max [1/min]:	6000
	Rotating direction:	opposite
	Coolant:	EXT
	Center distance [mm]:	105
8 030 57 037	Radial drilling and milling head ER 40 IC	
	Weight [kg]:	9.530
	Employment for:	Main spindle
	Version:	left
	Tool drive:	Coupling
	Shank size [mm]:	50.00
	Shank type:	VDI
	Tool adaption:	ER 40
	Gear ratio [i]:	1:1
	Torque max [Nm]:	50
	Rotation max [1/min]:	6000
	Rotating direction:	opposite
	Coolant:	IC/Ext
	Pressure max [bar]:	140
	Center distance [mm]:	105
8 030 57 038	Radial drilling and milling head ER 40	
	Weight [kg]:	10.020
	Employment for:	Sub spindle
	Version:	right
	Tool drive:	Coupling
	Shank size [mm]:	50.00
	Shank type:	VDI
	Tool adaption:	ER 40
	Gear ratio [i]:	1:1
	Torque max [Nm]:	50
	Rotation max [1/min]:	6000
	Rotating direction:	opposite

SPINNER
TC 110-SMCY

Part-#	Name	
	Coolant:	EXT
	Center distance [mm]:	140
8 030 57 121	Radial drilling and milling head ER 40 AX UT	
	Weight [kg]:	9.830
	Employment for:	Main spindle
	Version:	left
	Tool drive:	Coupling
	Shank size [mm]:	50.00
	Shank type:	VDI
	Tool adaption:	ER 40 u-tec
	Gear ratio [i]:	1:1
	Torque max [Nm]:	50
	Rotation max [1/min]:	6000
	Rotating direction:	opposite
	Coolant:	EXT
	Center distance [mm]:	105
8 030 57 122	Radial drilling and milling head ER 40 AX UT IC	
	Employment for:	Main spindle
	Version:	left
	Tool drive:	Coupling
	Shank size [mm]:	50.00
	Shank type:	VDI
	Tool adaption:	ER 40 u-tec
	Gear ratio [i]:	1:1
	Torque max [Nm]:	50
	Rotation max [1/min]:	6000
	Rotating direction:	opposite
	Coolant:	IC/Ext
	Pressure max [bar]:	140
	Center distance [mm]:	105
8 030 58 005	Radial drilling and milling head HT 6	
	Weight [kg]:	9.700
	Employment for:	Main spindle
	Version:	left
	Tool drive:	Coupling
	Shank size [mm]:	50.00
	Shank type:	VDI
	Tool adaption:	HT 6
	Gear ratio [i]:	1:1
	Torque max [Nm]:	50
	Rotation max [1/min]:	5000
	Rotating direction:	opposite
	Coolant:	EXT
	Please note:	stronger bearing
	Center distance [mm]:	105
8 030 58 006	Radial drilling and milling head HT 6 IC	
	Weight [kg]:	10.460
	Employment for:	Main spindle
	Version:	left
	Tool drive:	Coupling
	Shank size [mm]:	50.00
	Shank type:	VDI
	Tool adaption:	HT 6
	Gear ratio [i]:	1:1

SPINNER
TC 110-SMCY

Part-#	Name	
	Torque max [Nm]:	50
	Rotation max [1/min]:	5000
	Rotating direction:	opposite
	Coolant:	IC/Ext
	Pressure max [bar]:	140
	Please note:	stronger bearing
	Center distance [mm]:	105
8 030 58 007	Radial drilling and milling head HT 6	
	Employment for:	Sub spindle
	Version:	right
	Tool drive:	Coupling
	Shank size [mm]:	50.00
	Shank type:	VDI
	Tool adaption:	HT 6
	Gear ratio [i]:	1:1
	Torque max [Nm]:	50
	Rotation max [1/min]:	5000
	Rotating direction:	opposite
	Coolant:	EXT
	Please note:	stronger bearing
	Center distance [mm]:	140
8 030 58 008	Radial drilling and milling head HT 6 IC	
	Employment for:	Sub spindle
	Version:	right
	Tool drive:	Coupling
	Shank size [mm]:	50.00
	Shank type:	VDI
	Tool adaption:	HT 6
	Gear ratio [i]:	1:1
	Torque max [Nm]:	50
	Rotation max [1/min]:	5000
	Rotating direction:	opposite
	Coolant:	EXT
	Pressure max [bar]:	25
	Please note:	stronger bearing
	Center distance [mm]:	140
8 030 58 035	Radial drilling and milling head Weldon 32 IC	
	Weight [kg]:	10.480
	Employment for:	Main spindle
	Version:	left
	Tool drive:	Coupling
	Shank size [mm]:	50.00
	Shank type:	VDI
	Tool adaption:	Weldon (DIN 1835 b) 32
	Gear ratio [i]:	2:1
	Torque max [Nm]:	63
	Rotation max [1/min]:	3000
	Rotating direction:	opposite
	Coolant:	IC/Ext
	Pressure max [bar]:	140
	Please note:	stronger bearing
	Center distance [mm]:	105

SPINNER

TC 110-SMCY

Part-#	Name	
8 031 55 010	Radial milling head universal arbor 22	
	Weight [kg]:	9.020
	Employment for:	Main spindle
	Version:	left
	Tool drive:	Coupling
	Shank size [mm]:	50.00
	Shank type:	VDI
	Tool adaption:	Universal arbor 22
	Gear ratio [i]:	1:1
	Torque max [Nm]:	50
	Rotation max [1/min]:	6000
	Rotating direction:	opposite
	Coolant:	EXT
	Center distance [mm]:	105
8 031 56 006	Radial milling head universal arbor 27	
	Weight [kg]:	9.760
	Employment for:	Main spindle
	Version:	left
	Tool drive:	Coupling
	Shank size [mm]:	50.00
	Shank type:	VDI
	Tool adaption:	Universal arbor 27
	Gear ratio [i]:	1:1
	Torque max [Nm]:	50
	Rotation max [1/min]:	6000
	Rotating direction:	opposite
	Coolant:	EXT
	Please note:	stronger bearing
	Center distance [mm]:	105
8 039 56 010	Radial drilling and milling head ER 32	
	Weight [kg]:	13.320
	Employment for:	Main- and sub spindle
	Version:	double spindle
	Tool drive:	Coupling
	Shank size [mm]:	50.00
	Shank type:	VDI
	Tool adaption:	ER 32
	Gear ratio [i]:	1:1
	Torque max [Nm]:	50
	Rotation max [1/min]:	5000
	Rotating direction:	same/opposite
	Coolant:	EXT
	Pressure max [bar]:	140
	Please note:	stronger bearing
8 039 57 004	Radial drilling and milling head ER 40	
	Weight [kg]:	13.480
	Employment for:	Main- and sub spindle
	Version:	double spindle
	Tool drive:	Coupling
	Shank size [mm]:	50.00
	Shank type:	VDI
	Tool adaption:	ER 40
	Gear ratio [i]:	1:1
	Torque max [Nm]:	50
	Rotation max [1/min]:	5000

SPINNER

TC 110-SMCY

Part-#	Name	
	Rotating direction:	same/opposite
	Coolant:	EXT
	Please note:	stronger bearing
	Center distance [mm]:	140
8 040 56 006	Universal head ± 90° adjustable ER 32	
	Weight [kg]:	15.340
	Tool drive:	Coupling
	Shank size [mm]:	50.00
	Shank type:	VDI
	Tool adaption:	ER 32
	Gear ratio [i]:	1:1
	Torque max [Nm]:	50
	Rotation max [1/min]:	6000
	Rotating direction:	same
	Coolant:	EXT
	Center distance [mm]:	123
8 040 57 007	Universal head ± 90° adjustable ER 40	
	Weight [kg]:	15.480
	Tool drive:	Coupling
	Shank size [mm]:	50.00
	Shank type:	VDI
	Tool adaption:	ER 40
	Gear ratio [i]:	1:1
	Torque max [Nm]:	50
	Rotation max [1/min]:	4000
	Rotating direction:	same
	Coolant:	EXT
	Center distance [mm]:	123
8 202 50 002	Basic holder longitudinal seat FN 12	
	Weight [kg]:	2.730
	Version:	universal
	Shank size [mm]:	50.00
	Shank type:	VDI
	Tool adaption:	Interface FN 12
	Coolant:	EXT
8 209 54 000	Adapter for VDI 40	
	Weight [kg]:	7.920
	Version:	left
	Shank size [mm]:	50.00
	Shank type:	VDI
	Tool adaption:	DIN 69880 - 40
	Coolant:	EXT
	Center distance [mm]:	105
8 209 54 001	Adapter for VDI 40	
	Weight [kg]:	7.940
	Version:	left
	Shank size [mm]:	50.00
	Shank type:	VDI
	Tool adaption:	DIN 69880 - 40 both sides
	Coolant:	EXT
	Center distance [mm]:	105


SPINNER

TC 110-SMCY

Part-#	Name	
8 215 54 002	Tool holder C2-50x32 - special	
	Weight [kg]:	5.790
	Version:	Left
	Shank size [mm]:	50.00
	Shank type:	VDI
	Tool adaption:	Sq. 32/25
	Coolant:	EXT
8 215 54 003	Tool holder C4-50x32 - special	
	Version:	Left
	Shank size [mm]:	50.00
	Shank type:	VDI
	Tool adaption:	Sq. 32/25
	Coolant:	EXT
8 231 57 000	Collet chuck holder ER 40	
	Weight [kg]:	9.370
	Version:	left
	Shank size [mm]:	50.00
	Shank type:	VDI
	Tool adaption:	ER 40
	Coolant:	IC/Ext
	Please note:	demountable in right version
	Center distance [mm]:	140
8 231 57 002	Boring bar holder Ø 25	
	Weight [kg]:	8.310
	Version:	right / left
	Shank size [mm]:	50.00
	Shank type:	VDI
	Tool adaption:	Ø 25
	Coolant:	IC/Ext
	Please note:	demountable in right version
	Center distance [mm]:	105
8 231 58 000	Boring bar holder Ø 32	
	Weight [kg]:	8.080
	Employment for:	Heavy duty cutting
	Version:	right / left
	Shank size [mm]:	50.00
	Shank type:	VDI
	Tool adaption:	Ø 32
	Coolant:	IC/Ext
	Please note:	demountable in right version
	Center distance [mm]:	105
8 231 59 000	Boring bar holder Ø 40	
	Weight [kg]:	7.800
	Employment for:	Heavy duty cutting
	Version:	left
	Shank size [mm]:	50.00
	Shank type:	VDI
	Tool adaption:	Ø 40
	Coolant:	IC/Ext
	Please note:	demountable in right version
	Center distance [mm]:	105



SPINNER

TC 110-SMCY

Part-#	Name	
	8 231 59 001 Boring bar holder Ø 50	8.580
	Weight [kg]:	8.580
	Employment for:	Heavy duty cutting
	Version:	left
	Shank size [mm]:	50.00
	Shank type:	VDI
	Tool adaption:	Ø 50
	Coolant:	IC/Ext
	Pressure max [bar]:	140
	Please note:	demountable in right version
Center distance [mm]:	105	
	8 239 57 001 Double collet chuck holder ER 40	9.750
	Weight [kg]:	9.750
	Employment for:	Main- and sub spindle
	Shank size [mm]:	50.00
	Shank type:	VDI
	Tool adaption:	ER 40
	8 239 58 001 Double boring bar holder Ø 32	12.220
	Weight [kg]:	12.220
	Shank size [mm]:	50.00
	Shank type:	VDI
	Tool adaption:	Ø 32
	Coolant:	IC/Ext
	8 239 58 002 Double tool holder HT 6	140
	Employment for:	Main- and sub spindle
	Shank size [mm]:	50.00
	Shank type:	VDI
	Tool adaption:	HT 6
	Coolant:	IC/Ext
	8 239 58 004 Double tool holder HT 6	140
	Employment for:	Main- and sub spindle
	Version:	Special
	Shank size [mm]:	50.00
	Shank type:	VDI
	Tool adaption:	HT 6
	8 239 59 001 Double boring bar holder Ø 40	11.820
	Weight [kg]:	11.820
	Employment for:	Heavy duty cutting
	Shank size [mm]:	50.00
	Shank type:	VDI
	Tool adaption:	Ø 40
	Coolant:	IC/Ext
	Center distance [mm]:	140

SPINNER

TC 110-SMCY

Part-#	Name	
8 320 52 000	Cut-off holder, height adjustable SH 26 IC	
	Version:	universal
	Shank size [mm]:	50.00
	Shank type:	VDI
	Tool adaption:	Clampshaft SH 26
	Coolant:	IC/Ext
	Pressure max [bar]:	70
8 320 53 002	Cut-off holder, height adjustable SH 32	
	Weight [kg]:	3.260
	Shank size [mm]:	50.00
	Shank type:	VDI
	Tool adaption:	Clampshaft SH 32
	Coolant:	EXT
8 320 53 003	Cut-off holder, height adjustable SH 32 IC	
	Weight [kg]:	3.260
	Version:	universal
	Shank size [mm]:	50.00
	Shank type:	VDI
	Tool adaption:	Clampshaft SH 32
	Coolant:	IC/Ext
	Pressure max [bar]:	70
8 320 59 000	Cut-off holder, height adjustable 845 IC	
	Version:	universal
	Shank size [mm]:	50.00
	Shank type:	VDI
	Tool adaption:	 System 845
	Coolant:	IC
	Pressure max [bar]:	70



heimatec.u-tec®

heimatec.com

Products / Tool change systems /
u-tec® Tool-changing system



versions see catalog



heimatec.easy-quick

heimatec.com

Products / Tool change systems /
easy-quick HT quick-changing system



versions see catalog



heimatec.Capto™

heimatec.com

Products / Tool change systems /
heimatec.Capto™ quick-changing system



versions see catalog



heimatec.accessories

heimatec.com

Products / Accessories



versions see catalog





● heimatec overseas branches

○ global representations of heimatec

heimatec[®]

heimatec GmbH
Präzisionswerkzeuge
Carl-Benz-Str. 4
77871 Renchen
Germany

T +49 7843 9466 0
www.heimatec.com
info@heimatec.com

Please find the contact details of our worldwide trading partners on our website:
<https://heimatec.com/business-partners>