

TOPSELLER -
many more available!

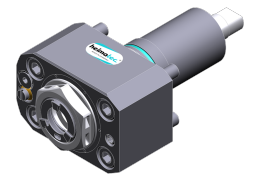
Live Tools

heimatec®

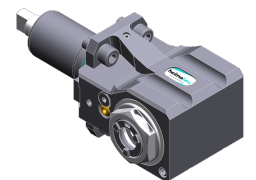
Nakamura NT-Flex

Part-#	Tool adaption	Rotation max [1/min]	Gear ratio	Coolant	Pressure max.	Center distance
Axial drilling and milling head						
8 010 34 044	ER 20 A - u-tec	12.000	1:1	IC/Ext	100 bar	--
Radial drilling and milling head						
8 030 34 043	ER 20 A - u-tec	12.000	1:1	EXT	--	60 mm
8 030 34 044	ER 20 A - u-tec	12.000	1:1	IC/Ext	140 bar	60 mm
Radial drilling and milling head, double spindle						
8 039 34 020	ER 20 A - u-tec	12.000	1:1	EXT	--	60 mm
Universal head						
8 040 34 012	ER 16 A - u-tec	12.000	1:1	EXT	--	55 mm
8 040 34 013	ER 16 A - u-tec	12.000	1:1	IC/Ext	140 bar	55 mm
Universal head, offset						
8 043 34 016	ER 16 A - u-tec	12.000	1:1	EXT	--	25 mm
8 043 34 017	ER 16 A - u-tec	12.000	1:1	IC/Ext	140 bar	25 mm

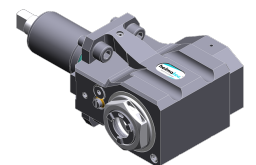
Illustrations similar.



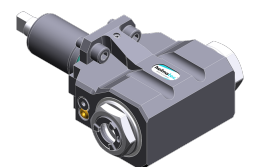
8 010 34 044



8 030 34 043



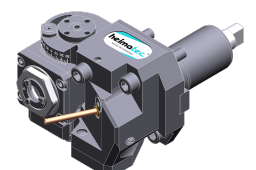
8 030 34 044



8 039 34 020



8 040 34 012



8 043 34 016

TOPSELLER -
many more available!

Static Tools

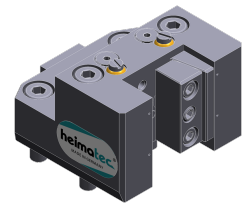
heimatec®

Nakamura

NT-Flex

Part-#	Tool adaption	Coolant	Pressure max.	Center distance
Universal turning holder				
8 224 04 069	Sq. 20	IC/Ext	100 bar	--
Cut-off holder				
8 225 01 003	Sq. 20	IC/Ext	100 bar	--
Boring bar holder				
8 240 07 065	Ø 25	IC/Ext	100 bar	75 mm
Combi facing holder				
8 244 04 028	Sq. 20	IC/Ext	100 bar	--
Double boring bar holder				
8 249 07 005	Ø 25	IC/Ext	100 bar	75 mm
Combi multiple holder				
8 251 03 006	Sq. 16	IC/Ext	100 bar	--
8 251 03 007	Sq. 16	IC/Ext	100 bar	--
8 259 03 002	Sq. 16	IC/Ext	100 bar	--
Double turning holder				
8 251 04 062	Sq. 20	IC/Ext	100 bar	--
Multiple boring bar holder				
8 253 06 021	Ø 25	IC/Ext	100 bar	75 mm
8 253 06 022	Ø 25	IC/Ext	100 bar	75 mm
Multiple turning holder				
8 259 03 003	Sq. 16	IC/Ext	100 bar	--
Multiple holder				
8 259 07 004	Sq. 20	IC/Ext	100 bar	75 mm
Cut-off holder, height adjustable				
8 320 02 034	Clampshaft SH 26	IC/Ext	70 bar	--

Illustrations similar.



8 224 04 069



8 225 01 003



8 240 07 065