

TOPSELLER -
many more available!

Live Tools

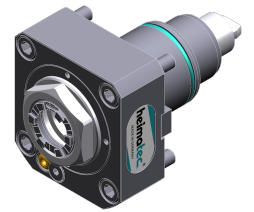
heimatec®

Doosan

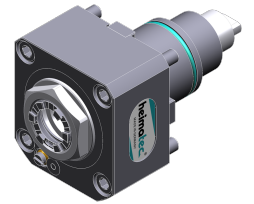
Lynx 220 LMSA/LMSC

Part-#	Tool adaption	Rotation max [1/min]	Gear ratio	Coolant	Pressure max.	Center distance
Axial drilling and milling head						
8 010 45 129	ER 25 A - u-tec	10.000	1:1	EXT	--	--
8 010 45 220	ER 25 A - u-tec	15.000	1:1	IC/Ext	100 bar	--
Radial drilling and milling head						
8 030 45 594	ER 25 A - u-tec	12.000	1:1	EXT	--	65 mm
8 030 45 595	ER 25 A - u-tec	12.000	1:1	IC/Ext	140 bar	65 mm
Universal head, offset						
8 043 45 011	ER 25 A - u-tec	6.000	1:1	EXT	--	69 mm

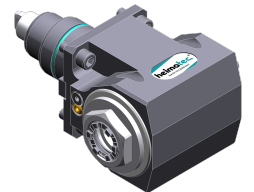
Illustrations similar.



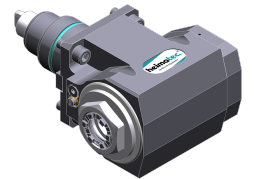
8 010 45 129



8 010 45 220



8 030 45 594



8 030 45 595

TOPSELLER -
many more available!

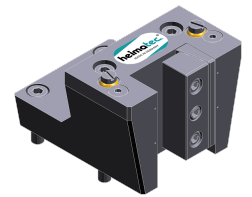
Static Tools

heimatec®

Doosan Lynx 220 LMSA/LMSC

Part-#	Tool adaption	Coolant	Pressure max.	Center distance
Universal turning holder				
8 224 05 011	Sq. 25	EXT	--	--
8 224 05 030	Sq. 25	IC/Ext	100 bar	--
Boring bar holder				
8 240 07 039	Ø 25	IC/Ext	--	65 mm
8 240 07 018	Ø 25	IC/Ext	--	85 mm
8 240 08 003	Ø 32	IC/Ext	80 bar	65 mm
8 240 08 021	Ø 32	IC/Ext	80 bar	85 mm
8 240 09 014	Ø 40	IC/Ext	80 bar	65 mm
8 240 09 017	Ø 40	IC/Ext	--	85 mm
Combi facing holder				
8 244 04 029	Sq. 20	IC/Ext	100 bar	--
Double boring bar holder				
8 249 08 004	Ø 32	IC/Ext	--	85 mm
Double turning holder				
8 251 04 008	Sq. 20	EXT	80 bar	--
Combi multiple holder				
8 251 04 045	Sq. 20	EXT	80 bar	--
8 251 04 046	Sq. 3/4" (19,05mm)	EXT	--	--
Multiple turning holder				
8 259 01 015	Sq. 20	EXT	--	--
Cut-off holder, height adjustable				
8 320 02 012	Clampshaft SH 26	IC/Ext	70 bar	--

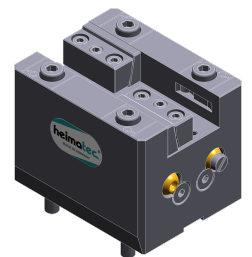
Illustrations similar.



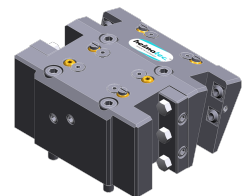
8 224 05 030



8 240 07 039



8 244 04 029



8 251 04 046

TOPSELLER -
many more available!

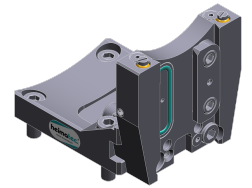
Static Tools

heimatec®

Doosan Lynx 220 LMSA/LMSC

Part-#	Tool adaption	Coolant	Pressure max.	Center distance
8 320 03 011	Clampshaft SH 32	IC/Ext	70 bar	--

Illustrations similar.



8 320 03 011