

Nakamura
NT-Flex



High-tech from heimatec - heimatec - Tools and systems for productive turning and milling

heimatec belongs to the international technology and quality leaders for precision tools and specializes in the development and production of high-precision static and live tools for all CNC lathes, CNC turn-/mill machines and CNC machining centers.

The range of products* spans from static BMT and VDI tool holders, live tools up to highly complex customer-specific individual solutions. heimatec, headquartered in Renchen, has a own subsidiary in Asia and India and numerous representatives as well as trading partners all over the world.

*OUR PRODCUTS

Static tool holders

Live tool units

Precision tools

Tools for turning and machining centres

Tools for swiss type lathes

Tool changing and uick-change systems

Tool systems for gear production

Digital tool management

This catalogue, including all its parts, is protected by copyright. Any use outside the restricted limitations of the Copyright Act without the consent of heimatec is inadmissible and liable to prosecution. This applies in particular to duplication, translation, microfilming and storage and processing in electronic systems.

heimatec GmbH reserves the right to make technical changes at any time without giving prior notice. This applies in particular to adjustments at any time to meet new or changed international standards, or in case of further developments of our products or manufacturing processes.

The current version of our General Terms and Conditions can be found on our website.

Part-#	Name	
8 010 34 043	Axial drilling and milling head ER 20 AX UT	
	Weight [kg]:	1.200
	Tool drive:	Flat (~DIN 1809)
	Shank size [mm]:	35.00
	Shank type:	BMT
	Tool adaption:	ER 20 A - u-tec
	Gear ratio [i]:	1:1
	Torque max [Nm]:	25
	Rotation max [1/min]:	12000
	Rotating direction:	same
	Coolant:	EXT
8 010 34 044	Axial drilling and milling head ER 20 AX UT IC	
	Tool drive:	Flat (~DIN 1809)
	Shank size [mm]:	35.00
	Shank type:	BMT
	Tool adaption:	ER 20 A - u-tec
	Gear ratio [i]:	1:1
	Torque max [Nm]:	25
	Rotation max [1/min]:	12000
	Rotating direction:	same
	Coolant:	IC/Ext
	Pressure max [bar]:	100
8 013 33 000	Axial drilling and milling head ER 11	
	Tool drive:	Flat (~DIN 1809)
	Shank size [mm]:	35.00
	Shank type:	BMT
	Tool adaption:	ER 11
	Gear ratio [i]:	1:4
	Torque max [Nm]:	5
	Rotation max [1/min]:	48000
	Rotating direction:	same
	Coolant:	EXT
8 030 33 000	Radial drilling and milling head ER 11	
	Notation:	180° reversible
	Tool drive:	Flat (~DIN 1809)
	Shank size [mm]:	35.00
	Shank type:	BMT
	Tool adaption:	ER 11
	Gear ratio [i]:	1:4
	Torque max [Nm]:	5
	Rotation max [1/min]:	48000
	Rotating direction:	opposite
	Coolant:	EXT
	Center distance [mm]:	60
8 030 34 043	Radial drilling and milling head ER 20 AX UT	
	Weight [kg]:	2.670
	Notation:	180° reversible
	Tool drive:	Flat (~DIN 1809)
	Shank size [mm]:	35.00
	Shank type:	BMT
	Tool adaption:	ER 20 A - u-tec
	Gear ratio [i]:	1:1

Part-#	Name
--------	------

Torque max [Nm]: 25
 Rotation max [1/min]: 12000
 Rotating direction: opposite
 Coolant: EXT
 Center distance [mm]: 60

8 030 34 044 Radial drilling and milling head ER 20 AX UT IC



Weight [kg]: 3.030
 Notation: 180° reversible
 Tool drive: Flat (~DIN 1809)
 Shank size [mm]: 35.00
 Shank type: BMT
 Tool adaption: ER 20 A - u-tec
 Gear ratio [i]: 1:1
 Torque max [Nm]: 25
 Rotation max [1/min]: 12000
 Rotating direction: opposite
 Coolant: IC/Ext
 Pressure max [bar]: 140
 Center distance [mm]: 60

8 037 34 009 Radial disk mill head arbor 16





Notation: 180° reversible
 Version: 0° position can be pinned
 Tool drive: Flat (~DIN 1809)
 Shank size [mm]: 35.00
 Shank type: BMT
 Tool adaption: Arbor 16
 Gear ratio [i]: 2:1
 Torque max [Nm]: 20
 Rotation max [1/min]: 5000
 Rotating direction: opposite
 Coolant: EXT
 Please note: Check applicability!
 Center distance [mm]: 72

8 039 34 020 Radial drilling and milling head ER 20 AX UT



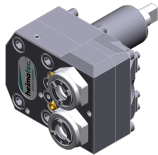
Weight [kg]: 3.310
 Notation: 180° reversible
 Version: double spindle
 Tool drive: Flat (~DIN 1809)
 Shank size [mm]: 35.00
 Shank type: BMT
 Tool adaption: ER 20 A - u-tec
 Gear ratio [i]: 1:1
 Torque max [Nm]: 25
 Rotation max [1/min]: 12000
 Rotating direction: same/opposite
 Coolant: EXT
 Center distance [mm]: 60

Part-#	Name	
8 040 34 012	Universal head ± 90° adj. ER 16 AX UT	
	Tool drive:	Flat (~DIN 1809)
	Shank size [mm]:	35.00
	Shank type:	BMT
	Tool adaption:	ER 16 A - u-tec
	Gear ratio [i]:	1:1
	Torque max [Nm]:	16
	Rotation max [1/min]:	12000
	Rotating direction:	same
	Coolant:	EXT
	Please note:	Check applicability; note tool length!
	Center distance [mm]:	55
8 040 34 013	Universal head ± 90° adj. ER 16 AX UT IC	
	Weight [kg]:	4.121
	Tool drive:	Flat (~DIN 1809)
	Shank size [mm]:	35.00
	Shank type:	BMT
	Tool adaption:	ER 16 A - u-tec
	Gear ratio [i]:	1:1
	Torque max [Nm]:	16
	Rotation max [1/min]:	12000
	Rotating direction:	same
	Coolant:	IC/Ext
	Pressure max [bar]:	140
	Please note:	Check applicability; note tool length!
	Center distance [mm]:	55
8 043 34 016	Universal head + 60°/- 5° adj. ER16AX UT	
	Weight [kg]:	3.270
	Notation:	offset; 180° reversible
	Tool drive:	Flat (~DIN 1809)
	Shank size [mm]:	35.00
	Shank type:	BMT
	Tool adaption:	ER 16 A - u-tec
	Gear ratio [i]:	1:1
	Torque max [Nm]:	16
	Rotation max [1/min]:	12000
	Rotating direction:	opposite
	Coolant:	EXT
	Center distance [mm]:	25
	Offset [mm]:	50
8 043 34 017	Universal head + 60°/- 5° adj. ER16AX UTIK	
	Weight [kg]:	3.270
	Notation:	offset; 180° reversible
	Tool drive:	Flat (~DIN 1809)
	Shank size [mm]:	35.00
	Shank type:	BMT
	Tool adaption:	ER 16 A - u-tec
	Gear ratio [i]:	1:1
	Torque max [Nm]:	16
	Rotation max [1/min]:	12000
	Rotating direction:	opposite
	Coolant:	IC/Ext
	Pressure max [bar]:	140

Part-#	Name
--------	------

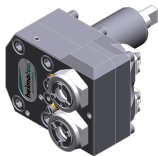
Center distance [mm]: 25
Offset [mm]: 50

8 050 34 012 Multispindle drilling head ER 16 AX UT



Weight [kg]: 3.080
Notation: offset; 180° reversible
Version: 2-spindles
Tool drive: Flat (~DIN 1809)
Shank size [mm]: 35.00
Shank type: BMT
Tool adaption: ER 16 A - u-tec
Gear ratio [i]: 1:1
Torque max [Nm]: 16/Sp.
Rotation max [1/min]: 12000
Rotating direction: same
Coolant: EXT
Please note: Check applicability!
Offset [mm]: 46

8 050 34 013 Multispindle drilling head ER 16 AX UT IC




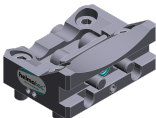


Weight [kg]: 3.100
Notation: offset; 180° reversible
Version: 2-spindles
Tool drive: Flat (~DIN 1809)
Shank size [mm]: 35.00
Shank type: BMT
Tool adaption: ER 16 A - u-tec
Gear ratio [i]: 1:1
Torque max [Nm]: 16/Sp.
Rotation max [1/min]: 12000
Rotating direction: same
Coolant: IC/Ext
Pressure max [bar]: 140
Please note: Check applicability!
Offset [mm]: 46

8 053 34 016 Multispindle radial head ER 16 AX UT



Weight [kg]: 3.544
Employment for: Main- and sub spindle
Version: 2-spindles
Tool drive: Flat (~DIN 1809)
Shank size [mm]: 35.00
Shank type: BMT
Tool adaption: ER 16 A - u-tec
Gear ratio [i]: 1:1
Torque max [Nm]: 16/Sp.
Rotation max [1/min]: 12000
Rotating direction: same/opposite
Coolant: EXT
Center distance [mm]: 65

Part-#	Name	
8 053 34 017	Multispindle radial head ER 16 AX UTIK	
	Version:	2-spindles
	Tool drive:	Flat (~DIN 1809)
	Shank size [mm]:	35.00
	Shank type:	BMT
	Tool adaption:	ER 16 A - u-tec
	Gear ratio [i]:	1:1
	Torque max [Nm]:	16/Sp.
	Rotation max [1/min]:	12000
	Rotating direction:	opposite
	Coolant:	IC/Ext
	Pressure max [bar]:	140
	Center distance [mm]:	65
8 059 34 001	Radial drilling and milling head ER 16 AX UT	
	Weight [kg]:	3.675
	Employment for:	Main- and sub spindle
	Version:	4-spindles
	Tool drive:	Flat (~DIN 1809)
	Shank size [mm]:	35.00
	Shank type:	BMT
	Tool adaption:	ER 16 A - u-tec
	Gear ratio [i]:	1:1
	Torque max [Nm]:	16/Sp.
	Rotation max [1/min]:	12000
	Rotating direction:	same/opposite
	Coolant:	EXT
	Center distance [mm]:	65
8 068 34 001	Radial whirling unit HW 46	
	Weight [kg]:	4.550
	Notation:	180° reversible
	Tool drive:	Flat (~DIN 1809)
	Shank size [mm]:	35.00
	Shank type:	BMT
	Tool adaption:	HW 46
	Gear ratio [i]:	1:1
	Torque max [Nm]:	16
	Rotation max [1/min]:	8000
	Rotating direction:	same
	Coolant:	EXT
	Please note:	without cutting inserts carrier; check applicability;
	Center distance [mm]:	63
8 202 00 030	Basic holder longitudinal seat FN 12	
	Notation:	180° reversible
	Shank type:	BMT
	Machine adaption:	Centering key b 16
	Tool adaption:	Interface FN 12
	Coolant:	IC
	Pressure max [bar]:	100

Part-#	Name	
8 224 01 023	Cut-off holder sq. 20 IC	
	Weight [kg]:	0.900
	Employment for:	right cutting tools
	Version:	Edge on side of turret
	Shank type:	BMT
	Machine adaption:	Centering key b 16
	Tool adaption:	Sq. 20
	Coolant:	IC/Ext
	Pressure max [bar]:	100
8 224 03 018	Universal turning holder sq. 3/4" IC	
	Weight [kg]:	1.540
	Notation:	180° reversible
	Shank type:	BMT
	Machine adaption:	Centering key b 16
	Tool adaption:	Sq. 3/4" (19,05mm)
		Sq. 3/4" (19,05mm)
	Coolant:	IC/Ext
	Pressure max [bar]:	100
	Please note:	Key rail
8 224 04 069	Universal turning holder sq. 20 IC	
	Weight [kg]:	1.520
	Notation:	180° reversible
	Shank type:	BMT
	Machine adaption:	Centering key b 16
	Tool adaption:	Sq. 20
		Sq. 20
	Coolant:	IC/Ext
	Pressure max [bar]:	100
	Please note:	Key rail
8 224 04 075	Universal turning holder sq. 20 IC	
	Weight [kg]:	1.460
	Notation:	180° reversible
	Shank type:	BMT
	Machine adaption:	Centering key b 16
	Tool adaption:	Sq. 20
		Sq. 20
	Coolant:	IC/Ext
	Pressure max [bar]:	100
	Please note:	Key rail
8 225 01 003	Cut-off holder sq. 20 IC	
	Weight [kg]:	0.900
	Employment for:	left cutting tools
	Version:	Edge on side of turret
	Shank type:	BMT
	Machine adaption:	Centering key b 16
	Tool adaption:	Sq. 20
	Coolant:	IC/Ext
	Pressure max [bar]:	100

Part-#	Name	
8 240 07 065	Boring bar holder Ø 25	
	Weight [kg]:	1.540
	Notation:	180° reversible
	Shank type:	BMT
	Machine adaption:	Centering key b 16
	Tool adaption:	Ø 25
	Coolant:	IC/Ext
	Pressure max [bar]:	100
	Center distance [mm]:	75
8 240 07 068	Boring bar holder Ø 1"	
	Weight [kg]:	1.500
	Notation:	180° reversible
	Shank type:	BMT
	Machine adaption:	Centering key b 16
	Tool adaption:	Ø 1" (25,4mm)
	Coolant:	IC/Ext
	Pressure max [bar]:	100
	Center distance [mm]:	75
8 244 03 000	Combi facing holder sq. 3/4" IC	
	Weight [kg]:	2.100
	Notation:	180° reversible
	Shank type:	BMT
	Machine adaption:	Centering key b 16
	Tool adaption:	Sq. 3/4" (19,05mm)
	Coolant:	IC/Ext
	Pressure max [bar]:	100
	Please note:	Key rail
8 244 04 028	Combi facing holder sq. 20 IC	
	Weight [kg]:	1.880
	Notation:	180° reversible
	Shank type:	BMT
	Machine adaption:	Centering key b 16
	Tool adaption:	Sq. 20
	Coolant:	IC/Ext
	Pressure max [bar]:	100
	Please note:	Key rail
8 249 07 005	Double boring bar holder Ø 25	
	Weight [kg]:	1.820
	Notation:	180° reversible
	Shank type:	BMT
	Machine adaption:	Centering key b 16
	Tool adaption:	Ø 25
	Coolant:	IC/Ext
	Pressure max [bar]:	100
	Center distance [mm]:	75

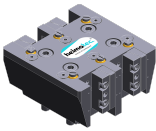
Part-#	Name	
8 249 07 007	Double boring bar holder Ø 1"	
	Weight [kg]:	1.740
	Notation:	180° reversible
	Employment for:	Main- and sub spindle
	Shank type:	BMT
	Machine adaption:	Centering key b 16
	Tool adaption:	Ø 1" (25,4mm)
	Coolant:	IC/Ext
	Pressure max [bar]:	100
	Center distance [mm]:	75
8 251 02 002	Combi multiple holder sq. 5/8" IC	
	Shank type:	BMT
	Machine adaption:	Centering key b 16
	Tool adaption:	Sq. 5/8"
		Sq. 5/8"
	Coolant:	IC/Ext
	Pressure max [bar]:	100
	Please note:	Key rail
8 251 02 003	Combi multiple holder sq. 5/8" IC	
	Employment for:	Main- and sub spindle
	Shank type:	BMT
	Machine adaption:	Centering key b 16
	Tool adaption:	Sq. 5/8" (15,875mm)
		Sq. 5/8" (15,875mm)
		Sq. 5/8" (15,875mm)
		Sq. 5/8" (15,875mm)
	Coolant:	IC/Ext
	Pressure max [bar]:	100
	Please note:	Key rail
8 251 03 006	Combi multiple holder sq. 16 IC	
	Weight [kg]:	1.600
	Shank type:	BMT
	Machine adaption:	Centering key b 16
	Tool adaption:	Sq. 16
		Sq. 16
	Coolant:	IC/Ext
	Pressure max [bar]:	100
	Please note:	Key rail
8 251 03 007	Combi multiple holder sq. 16 IC	
	Weight [kg]:	2.700
	Employment for:	Main- and sub spindle
	Shank type:	BMT
	Machine adaption:	Centering key b 16
	Tool adaption:	Sq. 16
		Sq. 16
		Sq. 16
		Sq. 16
	Coolant:	IC/Ext
	Pressure max [bar]:	100
	Please note:	Key rail

Part-#	Name	
8 251 03 009	Combi double turning holder sq. 3/4"IC	
	Weight [kg]:	2.550
	Shank type:	BMT
	Machine adaption:	Centering key b 16
	Tool adaption:	Sq. 3/4" (19,05mm)
		Sq. 3/4" (19,05mm)
		Sq. 3/4" (19,05mm)
		Sq. 3/4" (19,05mm)
	Coolant:	IC/Ext
	Pressure max [bar]:	100
	Please note:	Key rail
8 251 04 062	Combi double turning holder sq. 20 IC	
	Weight [kg]:	2.540
	Shank type:	BMT
	Machine adaption:	Centering key b 16
	Tool adaption:	Sq. 20
		Sq. 20
	Coolant:	IC/Ext
	Pressure max [bar]:	100
	Please note:	Key rail
8 253 06 021	Multiple boring bar holder Ø 25	
	Weight [kg]:	2.550
	Notation:	180° reversible
	Employment for:	Main- and sub spindle
	Shank type:	BMT
	Machine adaption:	Centering key b 16
	Tool adaption:	Ø 25
		Ø 25 - 15°
	Coolant:	IC/Ext
	Pressure max [bar]:	100
	Center distance [mm]:	75
8 253 06 022	Multiple boring bar holder, double Ø 25	
	Weight [kg]:	3.367
	Notation:	180° reversible
	Employment for:	Main- and sub spindle
	Shank type:	BMT
	Machine adaption:	Centering key b 16
	Tool adaption:	Ø 25
		Ø 25
	Coolant:	IC/Ext
	Pressure max [bar]:	100
	Center distance [mm]:	75
8 253 07 067	Multiple boring bar holder Ø 1"	
	Weight [kg]:	2.339
	Notation:	180° reversible
	Employment for:	Main- and sub spindle
	Shank type:	BMT
	Machine adaption:	Centering key b 16
	Tool adaption:	Ø 1" (Ø 25,4 mm)
		Ø 1" (25,4 mm) - 15°
	Coolant:	IC/Ext
	Pressure max [bar]:	100

Part-#	Name	
	Center distance [mm]:	75
8 253 07 068	Multiple boring bar holder, double Ø 1"	
	Notation:	180° reversible
	Employment for:	Main- and sub spindle
	Shank type:	BMT
	Machine adaption:	Centering key b 16
	Tool adaption:	Ø 1" (25,4mm) Ø 1" (25,4mm)
	Coolant:	IC/Ext
	Pressure max [bar]:	100
	Center distance [mm]:	75
8 259 02 007	Combi multiple holder sq. 5/8" IC	
	Weight [kg]:	1.500
	Notation:	Y-axes offset, 180° reversible
	Shank type:	BMT
	Machine adaption:	Centering key b 16
	Tool adaption:	Sq. 5/8" (15,875mm) Sq. 5/8" (15,875mm) Sq. 5/8" (15,875mm) Sq. 5/8" (15,875mm)
	Coolant:	IC/Ext
	Pressure max [bar]:	100
	Please note:	Key rail
8 259 02 008	Multiple turning holder 4x sq. 5/8" IC	
	Weight [kg]:	2.900
	Notation:	Y-axes offset
	Shank type:	BMT
	Machine adaption:	Centering key b 16
	Tool adaption:	Sq. 5,8" (15,875 mm) Sq. 5,8" (15,875 mm) Sq. 5,8" (15,875 mm) Sq. 5,8" (15,875 mm)
	Coolant:	IC/Ext
	Pressure max [bar]:	100
	Please note:	Key rail
8 259 03 002	Combi multiple holder sq. 16 IC	
	Weight [kg]:	1.650
	Notation:	Y-axes offset, 180° reversible
	Shank type:	BMT
	Machine adaption:	Centering key b 16
	Tool adaption:	Sq. 16 Sq. 16
	Coolant:	IC/Ext
	Pressure max [bar]:	100
	Please note:	Key rail

Part-#	Name
--------	------

8 259 03 003 Multiple turning holder 4x sq. 16 IC



Weight [kg]: 2.850
 Notation: Y-axes offset
 Shank type: BMT
 Machine adaption: Centering key b 16
 Tool adaption: Sq. 16
 Sq. 16
 Sq. 16
 Sq. 16
 Sq. 16
 Coolant: IC/Ext
 Pressure max [bar]: 100
 Please note: Key rail

8 259 07 004 Multiple holder Ø 25 and sq. 20 IC



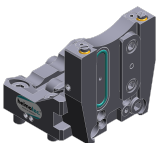
Weight [kg]: 3.120
 Employment for: Main- and sub spindle
 Shank type: BMT
 Machine adaption: Centering key b 16
 Tool adaption: Sq. 20
 Sq. 20
 Sq. 20
 Sq. 20
 Sq. 20
 Coolant: IC/Ext
 Pressure max [bar]: 100
 Center distance [mm]: 75

8 259 07 005 Multiple holder Ø 1" and sq. 3/4" IC



Weight [kg]: 3.200
 Notation: 180° reversible
 Employment for: Main- and sub spindle
 Shank type: BMT
 Machine adaption: Centering key b 16
 Tool adaption: Sq. 3/4" (19,05 mm)
 Sq. 3/4" (19,05 mm)
 Sq. 3/4" (19,05 mm)
 Sq. 3/4" (19,05 mm)
 Sq. 3/4" (19,05 mm)
 Coolant: IC/Ext
 Pressure max [bar]: 100
 Center distance [mm]: 75

8 320 02 034 Cut-off holder, height adjustable SH 26 IC



Weight [kg]: 1.080
 Notation: 180° reversible
 Shank type: BMT
 Machine adaption: Centering key b 16
 Tool adaption: Clampshaft SH 26
 Coolant: IC/Ext
 Pressure max [bar]: 70

heimatec.u-tec®

heimatec.com

Products / Tool change systems /
u-tec® Tool-changing system



versions see catalog



heimatec.easy-quick

heimatec.com

Products / Tool change systems /
easy-quick HT quick-changing system



versions see catalog



heimatec.Capto™

heimatec.com

Products / Tool change systems /
heimatec.Capto™ quick-changing system



versions see catalog



heimatec.accessories

heimatec.com

Products / Accessories



versions see catalog





● heimatec overseas branches

○ global representations of heimatec

heimatec[®]

heimatec GmbH
Präzisionswerkzeuge
Carl-Benz-Str. 4
77871 Renchen
Germany

T +49 7843 9466 0
www.heimatec.com
info@heimatec.com

Please find the contact details of our worldwide trading partners on our website:
<https://heimatec.com/business-partners>