

SPINNER
TC 300-SMCY



High-tech from heimatec - heimatec - Tools and systems for productive turning and milling

heimatec belongs to the international technology and quality leaders for precision tools and specializes in the development and production of high-precision static and live tools for all CNC lathes, CNC turn-/mill machines and CNC machining centers.

The range of products* spans from static BMT and VDI tool holders, live tools up to highly complex customer-specific individual solutions. heimatec, headquartered in Renchen, has a own subsidiary in Asia and India and numerous representatives as well as trading partners all over the world.

*OUR PRODCUTS

Static tool holders

Live tool units

Precision tools

Tools for turning and machining centres

Tools for swiss type lathes

Tool changing and uick-change systems

Tool systems for gear production

Digital tool management

This catalogue, including all its parts, is protected by copyright. Any use outside the restricted limitations of the Copyright Act without the consent of heimatec is inadmissible and liable to prosecution. This applies in particular to duplication, translation, microfilming and storage and processing in electronic systems.

heimatec GmbH reserves the right to make technical changes at any time without giving prior notice. This applies in particular to adjustments at any time to meet new or changed international standards, or in case of further developments of our products or manufacturing processes.

The current version of our General Terms and Conditions can be found on our website.

SPINNER

TC 300-SMCY

| Part-# | Name |
|--------|------|
|--------|------|

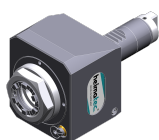
8 010 25 098



Axial drilling and milling head ER 25 AX UT

Weight [kg]: 2.360
 Tool drive: Flat (~DIN 1809)
 Shank size [mm]: 25.00
 Shank type: VDI
 Tool adaption: ER 25 A - u-tec
 Gear ratio [i]: 1:1
 Torque max [Nm]: 25
 Rotation max [1/min]: 8000
 Rotating direction: same
 Coolant: EXT

8 010 25 099



Axial drilling and milling head ER 25 AX UT IC

Weight [kg]: 2.560
 Tool drive: Flat (~DIN 1809)
 Shank size [mm]: 25.00
 Shank type: VDI
 Tool adaption: ER 25 A - u-tec
 Gear ratio [i]: 1:1
 Torque max [Nm]: 25
 Rotation max [1/min]: 8000
 Rotating direction: same
 Coolant: IC/Ext
 Pressure max [bar]: 25

8 010 26 037

Axial drilling and milling head HT 4

Weight [kg]: 2.580
 Tool drive: Flat (~DIN 1809)
 Shank size [mm]: 25.00
 Shank type: VDI
 Tool adaption: HT 4
 Gear ratio [i]: 1:1
 Torque max [Nm]: 25
 Rotation max [1/min]: 8000
 Rotating direction: same
 Coolant: EXT

8 010 26 038

Axial drilling and milling head HT 4 IC

Weight [kg]: 2.560
 Tool drive: Flat (~DIN 1809)
 Shank size [mm]: 25.00
 Shank type: VDI
 Tool adaption: HT 4
 Gear ratio [i]: 1:1
 Torque max [Nm]: 25
 Rotation max [1/min]: 8000
 Rotating direction: same
 Coolant: IC/Ext
 Pressure max [bar]: 25

8 011 24 015

Axial milling head universal arbor 16

Weight [kg]: 2.460
 Tool drive: Flat (~DIN 1809)
 Shank size [mm]: 25.00
 Shank type: VDI
 Tool adaption: Universal arbor 16
 Gear ratio [i]: 1:1

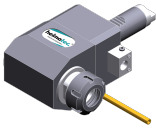

SPINNER

TC 300-SMCY

| Part-# | Name | |
|---------------------|---|-------------------------|
| | Torque max [Nm]: | 25 |
| | Rotation max [1/min]: | 6000 |
| | Rotating direction: | same |
| | Coolant: | EXT |
| | Please note: | Taper roller bearings |
| 8 011 25 013 | Axial milling head universal arbor 22 | |
| | Weight [kg]: | 2.580 |
| | Tool drive: | Flat (~DIN 1809) |
| | Shank size [mm]: | 25.00 |
| | Shank type: | VDI |
| | Tool adaption: | Universal arbor 22 |
| | Gear ratio [i]: | 1:1 |
| | Torque max [Nm]: | 25 |
| | Rotation max [1/min]: | 8000 |
| | Rotating direction: | same |
| | Coolant: | EXT |
| | Please note: | Taper roller bearings |
| 8 016 24 000 | Axial drilling and milling head HT 2 | |
| | Notation: | offset; 180° reversible |
| | Version: | doubletoothed |
| | Tool drive: | Flat (~DIN 1809) |
| | Shank size [mm]: | 25.00 |
| | Shank type: | VDI |
| | Tool adaption: | HT 2 |
| | Gear ratio [i]: | 1:2 |
| | Torque max [Nm]: | 16 |
| | Rotation max [1/min]: | 16000 |
| | Rotating direction: | opposite |
| | Coolant: | EXT |
| | Offset [mm]: | 34,5 |
| 8 016 24 005 | Axial drilling and milling head ER 16 AX UT | |
| | Weight [kg]: | 3.700 |
| | Notation: | offset; 180° reversible |
| | Version: | doubletoothed |
| | Tool drive: | Flat (~DIN 1809) |
| | Shank size [mm]: | 25.00 |
| | Shank type: | VDI |
| | Tool adaption: | ER 16 A - u-tec |
| | Gear ratio [i]: | 1:2 |
| | Torque max [Nm]: | 16 |
| | Rotation max [1/min]: | 16000 |
| | Rotating direction: | opposite |
| | Coolant: | EXT |
| 8 036 24 016 | Radial drilling and milling head ER 16 AX UT | |
| | Version: | doubletoothed |
| | Tool drive: | Flat (~DIN 1809) |
| | Shank size [mm]: | 25.00 |
| | Shank type: | VDI |
| | Tool adaption: | ER 16 A - u-tec |
| | Gear ratio [i]: | 1:2 |
| | Torque max [Nm]: | 8 |
| | Rotation max [1/min]: | 16000 |
| | Rotating direction: | opposite |
| | Coolant: | EXT |


SPINNER

TC 300-SMCY

| Part-# | Name | |
|---|---|------------------------|
| | Center distance [mm]: | 75 |
| 8 036 24 020 | Radial milling head universal arbor 16 | |
| | Weight [kg]: | 3.630 |
| | Version: | Special; doubletoothed |
| | Tool drive: | Flat (~DIN 1809) |
| | Shank size [mm]: | 25.00 |
| | Shank type: | VDI |
| | Tool adaption: | Universal arbor 16 |
| | Gear ratio [i]: | 1:1 |
| | Torque max [Nm]: | 16 |
| | Rotation max [1/min]: | 6000 |
| | Rotating direction: | opposite |
| | Coolant: | EXT |
| | Please note: | stronger bearing |
| | Center distance [mm]: | 75 |
| 8 036 25 010 | Radial drilling and milling head ER 25 | |
|  | Weight [kg]: | 3.200 |
| | Version: | doubletoothed |
| | Tool drive: | Flat (~DIN 1809) |
| | Shank size [mm]: | 25.00 |
| | Shank type: | VDI |
| | Tool adaption: | ER 25 |
| | Gear ratio [i]: | 1:1 |
| | Torque max [Nm]: | 25 |
| | Rotation max [1/min]: | 8000 |
| | Rotating direction: | opposite |
| | Coolant: | EXT |
| | Center distance [mm]: | 75 |
| 8 036 25 011 | Radial drilling and milling head ER 25 IC | |
|  | Weight [kg]: | 3.600 |
| | Version: | doubletoothed |
| | Tool drive: | Flat (~DIN 1809) |
| | Shank size [mm]: | 25.00 |
| | Shank type: | VDI |
| | Tool adaption: | ER 25 |
| | Gear ratio [i]: | 1:1 |
| | Torque max [Nm]: | 25 |
| | Rotation max [1/min]: | 8000 |
| | Rotating direction: | opposite |
| | Coolant: | IC/Ext |
| | Pressure max [bar]: | 140 |
| | Center distance [mm]: | 75 |
| 8 036 25 025 | Radial drilling and milling head ER 25 AX UT | |
| | Weight [kg]: | 3.410 |
| | Version: | doubletoothed |
| | Tool drive: | Flat (~DIN 1809) |
| | Shank size [mm]: | 25.00 |
| | Shank type: | VDI |
| | Tool adaption: | ER 25 A - u-tec |
| | Gear ratio [i]: | 1:1 |
| | Torque max [Nm]: | 25 |
| | Rotation max [1/min]: | 8000 |
| | Rotating direction: | opposite |

SPINNER

TC 300-SMCY

| Part-# | Name | |
|---|--|-------------------------------|
| | Coolant: | EXT |
| | Center distance [mm]: | 75 |
| 8 036 25 026 | Radial drilling and milling head ER 25 | |
| | Weight [kg]: | 4.000 |
| | Version: | doubletoothed; special |
| | Tool drive: | Flat (~DIN 1809) |
| | Shank size [mm]: | 25.00 |
| | Shank type: | VDI |
| | Tool adaption: | ER 25 |
| | Gear ratio [i]: | 1:1 |
| | Torque max [Nm]: | 25 |
| | Rotation max [1/min]: | 8000 |
| | Rotating direction: | opposite |
| | Coolant: | EXT |
| | Center distance [mm]: | 100 |
| 8 036 25 047 | Radial drilling and milling head ER 25 IC | |
| | Version: | doubletoothed |
| | Tool drive: | Flat (~DIN 1809) |
| | Shank size [mm]: | 25.00 |
| | Shank type: | VDI |
| | Tool adaption: | ER 25 |
| | Gear ratio [i]: | 1:2 |
| | Torque max [Nm]: | 16 |
| | Rotation max [1/min]: | 12000 |
| | Rotating direction: | opposite |
| | Coolant: | IC/Ext |
| | Pressure max [bar]: | 140 |
| | Center distance [mm]: | 75 |
| 8 036 26 033 | Radial drilling and milling head HT 4 | |
| | Weight [kg]: | 3.230 |
| | Version: | doubletoothed |
| | Tool drive: | Flat (~DIN 1809) |
| | Shank size [mm]: | 25.00 |
| | Shank type: | VDI |
| | Tool adaption: | HT 4 |
| | Gear ratio [i]: | 1:1 |
| | Torque max [Nm]: | 25 |
| | Rotation max [1/min]: | 6000 |
| | Rotating direction: | opposite |
| | Coolant: | EXT |
| | Please note: | Fixation slide stone |
| | Center distance [mm]: | 75 |
| 8 039 25 024 | Radial drilling and milling head ER 25 | |
|  | Weight [kg]: | 3.700 |
| | Employment for: | Main- and sub spindle |
| | Version: | doubletoothed; double spindle |
| | Tool drive: | Flat (~DIN 1809) |
| | Shank size [mm]: | 25.00 |
| | Shank type: | VDI |
| | Tool adaption: | ER 25 |
| | Gear ratio [i]: | 1:1 |
| | Torque max [Nm]: | 25 |
| | Rotation max [1/min]: | 8000 |

SPINNER

TC 300-SMCY

| Part-# | Name | |
|---------------------|---|--|
| | Rotating direction: | same/opposite |
| | Coolant: | EXT |
| | Please note: | stronger bearing |
| | Center distance [mm]: | 75 |
| 8 039 25 046 | Radial drilling and milling head ER 25 | |
| | Weight [kg]: | 4.520 |
| | Employment for: | Main- and sub spindle |
| | Version: | doubletoothed; double spindle; special |
| | Tool drive: | Flat (~DIN 1809) |
| | Shank size [mm]: | 25.00 |
| | Shank type: | VDI |
| | Tool adaption: | ER 25 |
| | Gear ratio [i]: | 1:1 |
| | Torque max [Nm]: | 25 |
| | Rotation max [1/min]: | 8000 |
| | Rotating direction: | same/opposite |
| | Coolant: | EXT |
| | Please note: | stronger bearing |
| | Center distance [mm]: | 100 |
| 8 040 24 042 | Universal head ± 90° adjustable ER 16 | |
| | Version: | right |
| | Tool drive: | Flat (~DIN 1809) |
| | Shank size [mm]: | 25.00 |
| | Shank type: | VDI |
| | Tool adaption: | ER 16 |
| | Gear ratio [i]: | 1:1 |
| | Torque max [Nm]: | 10 |
| | Rotation max [1/min]: | 8000 |
| | Rotating direction: | same |
| | Coolant: | EXT |
| | Please note: | note useable swivel range! |
| | Center distance [mm]: | 65 |
| 8 040 24 065 | Universal head ± 90° adjustable ER 16 AX UT IC | |
| | Weight [kg]: | 4.290 |
| | Version: | left |
| | Tool drive: | Flat (~DIN 1809) |
| | Shank size [mm]: | 25.00 |
| | Shank type: | VDI |
| | Tool adaption: | ER 16 A - u-tec |
| | Gear ratio [i]: | 1:1 |
| | Torque max [Nm]: | 25 |
| | Rotation max [1/min]: | 6000 |
| | Rotating direction: | opposite |
| | Coolant: | IC/Ext |
| | Pressure max [bar]: | 140 |
| | Center distance [mm]: | 85 |
| 8 040 24 068 | Universal head ± 90° adjustable ER 16 AX UT | |
| | Weight [kg]: | 4.290 |
| | Version: | right |
| | Tool drive: | Flat (~DIN 1809) |
| | Shank size [mm]: | 25.00 |
| | Shank type: | VDI |
| | Tool adaption: | ER 16 A - u-tec |
| | Gear ratio [i]: | 1:1 |

SPINNER

TC 300-SMCY

| Part-# | Name | |
|---------------------|---|-----------------|
| | Torque max [Nm]: | 25 |
| | Rotation max [1/min]: | 6000 |
| | Rotating direction: | opposite |
| | Coolant: | EXT |
| | Center distance [mm]: | 85 |
| 8 200 20 001 | Plug Z2-25 K | |
| | Weight [kg]: | 0.020 |
| | Shank size [mm]: | 25.00 |
| | Shank type: | VDI |
| 8 200 20 004 | Plug Z2-25 S | |
| | Weight [kg]: | 0.480 |
| | Shank size [mm]: | 25.00 |
| | Shank type: | VDI |
| 8 200 22 000 | Tool holder A1-25x 75 | |
| | Shank size [mm]: | 25.00 |
| | Shank type: | VDI |
| 8 202 20 011 | Basic holder longitudinal seat FN 12 | |
| | Weight [kg]: | 0.800 |
| | Version: | universal |
| | Shank size [mm]: | 25.00 |
| | Shank type: | VDI |
| | Tool adaption: | Interface FN 12 |
| | Coolant: | EXT |
| 8 209 21 005 | Adapter for VDI 20 | |
| | Version: | left |
| | Shank size [mm]: | 25.00 |
| | Shank type: | VDI |
| | Tool adaption: | DIN 69880 - 20 |
| | Center distance [mm]: | 75 |
| 8 209 22 012 | Adapter for VDI 25 | |
| | Version: | right |
| | Shank size [mm]: | 25.00 |
| | Shank type: | VDI |
| | Tool adaption: | DIN 69880 - 25 |
| | Center distance [mm]: | 75 |
| 8 209 22 013 | Adapter for VDI 25 | |
| | Weight [kg]: | 2.430 |
| | Version: | left |
| | Shank size [mm]: | 25.00 |
| | Shank type: | VDI |
| | Tool adaption: | DIN 69880 - 25 |
| | Coolant: | EXT |
| | Center distance [mm]: | 75 |



SPINNER

TC 300-SMCY

| Part-# | Name | |
|---------------------|--|-----------------------|
| 8 209 22 014 | Adapter for VDI 25 | |
| | Notation: | offset |
| | Version: | right |
| | Shank size [mm]: | 25.00 |
| | Shank type: | VDI |
| | Tool adaption: | DIN 69880 - 25 |
| | Center distance [mm]: | 75 |
| 8 209 22 015 | Adapter for VDI 25 | |
| | Weight [kg]: | 2.920 |
| | Notation: | offset |
| | Version: | left |
| | Shank size [mm]: | 25.00 |
| | Shank type: | VDI |
| | Tool adaption: | DIN 69880 - 25 |
| | Center distance [mm]: | 75 |
| 8 214 21 001 | Tool holder C3-25x16 | |
| | Weight [kg]: | 1.070 |
| | Shank size [mm]: | 25.00 |
| | Shank type: | VDI |
| | Tool adaption: | Sq. 16/12 |
| | Coolant: | EXT |
| 8 214 21 003 | Tool holder C1-25x16/12 | |
| | Shank size [mm]: | 25.00 |
| | Shank type: | VDI |
| | Tool adaption: | Sq. 16/12 |
| | Coolant: | EXT |
| 8 214 24 001 | Universal turning holder sq. 20 | |
| | Weight [kg]: | 1.460 |
| | Shank size [mm]: | 25.00 |
| | Shank type: | VDI |
| | Tool adaption: | Sq. 20 |
| | | Sq. 20 |
| | Coolant: | EXT |
| | Please note: | with reversible shaft |
| 8 215 21 001 | Tool holder C2-25x16 | |
| | Weight [kg]: | 1.100 |
| | Version: | Left |
| | Shank size [mm]: | 25.00 |
| | Shank type: | VDI |
| | Tool adaption: | Sq. 16/12 |
| | Coolant: | EXT |
| 8 215 21 002 | Tool holder C4-25x16 | |
| | Version: | Left |
| | Shank size [mm]: | 25.00 |
| | Shank type: | VDI |
| | Tool adaption: | Sq. 16/12 |
| | Coolant: | EXT |

SPINNER

TC 300-SMCY

| Part-# | Name | |
|---|-----------------------------------|-----------------------------|
| 8 215 22 002 | Tool holder C4-25x20/16 | |
| | Version: | left |
| | Shank size [mm]: | 25.00 |
| | Shank type: | VDI |
| | Tool adaption: | Sq. 20/16 |
| | Coolant: | EXT |
| 8 215 22 003 | Tool holder C2-25x20/16 | |
| | Weight [kg]: | 1.140 |
| | Version: | left |
| | Shank size [mm]: | 25.00 |
| | Shank type: | VDI |
| | Tool adaption: | Sq. 20/16 |
| | Coolant: | EXT |
| 8 216 22 000 | Tool holder C1/C4-25x20/16 | |
| | Weight [kg]: | 1.150 |
| | Employment for: | VDI 25 |
| | Version: | doubletoothed |
| | Shank size [mm]: | 25.00 |
| | Shank type: | VDI |
| | Tool adaption: | Sq. 20/16 |
| | Coolant: | EXT |
| 8 230 27 024 | Boring bar holder Ø 25 | |
|  | Weight [kg]: | 2.860 |
| | Version: | right |
| | Shank size [mm]: | 25.00 |
| | Shank type: | VDI |
| | Tool adaption: | Ø 25 |
| | Coolant: | IC/Ext |
| | Please note: | demountable in left version |
| | Center distance [mm]: | 75 |
| 8 230 27 041 | Boring bar holder Ø 30 | |
| | Weight [kg]: | 2.770 |
| | Version: | right |
| | Shank size [mm]: | 25.00 |
| | Shank type: | VDI |
| | Tool adaption: | Ø 30 |
| | Coolant: | IC/Ext |
| | Please note: | demountable in left version |
| | Center distance [mm]: | 75 |
| 8 230 27 049 | Boring bar holder Ø 25 | |
|  | Weight [kg]: | 3.420 |
| | Version: | right |
| | Shank size [mm]: | 25.00 |
| | Shank type: | VDI |
| | Tool adaption: | Ø 25 |
| | Coolant: | IC/Ext |
| | Please note: | demountable in left version |
| | Center distance [mm]: | 95 |

SPINNER

TC 300-SMCY

| Part-# | Name | |
|---------------------|----------------------------------|------------------------------|
| 8 230 27 054 | Boring bar holder Ø 1" | |
| | Weight [kg]: | 2.850 |
| | Version: | right |
| | Shank size [mm]: | 25.00 |
| | Shank type: | VDI |
| | Tool adaption: | Ø 1" (25,4mm) |
| | Coolant: | IC/Ext |
| | Please note: | demountable in left version |
| | Center distance [mm]: | 75 |
| 8 230 28 019 | Boring bar holder Ø 32 | |
| | Notation: | offset |
| | Version: | right |
| | Shank size [mm]: | 25.00 |
| | Shank type: | VDI |
| | Tool adaption: | Ø 32 |
| | Coolant: | IC/Ext |
| | Center distance [mm]: | 75 |
| 8 231 24 001 | Collet chuck holder ER 20 | |
| | Weight [kg]: | 2.800 |
| | Notation: | offset |
| | Version: | left |
| | Shank size [mm]: | 25.00 |
| | Shank type: | VDI |
| | Tool adaption: | ER 20 |
| | Coolant: | IC/Ext |
| | Center distance [mm]: | 75 |
| 8 231 25 004 | Collet chuck holder ER 25 | |
| | Weight [kg]: | 3.140 |
| | Notation: | offset |
| | Version: | left |
| | Shank size [mm]: | 25.00 |
| | Shank type: | VDI |
| | Tool adaption: | ER 25 |
| | Coolant: | IC/Ext |
| | Center distance [mm]: | 75 |
| 8 231 26 007 | Tool holder HT 4 | |
| | Notation: | offset |
| | Version: | left |
| | Shank size [mm]: | 25.00 |
| | Shank type: | VDI |
| | Tool adaption: | HT 4 |
| | Coolant: | IC/Ext |
| | Please note: | HT- insert demountable |
| | Center distance [mm]: | 75 |
| 8 231 28 001 | Boring bar holder Ø 32 | |
| | Version: | left |
| | Shank size [mm]: | 25.00 |
| | Shank type: | VDI |
| | Tool adaption: | Ø 32 |
| | Coolant: | IC/Ext |
| | Please note: | demountable in right version |
| | Center distance [mm]: | 75 |



SPINNER

TC 300-SMCY

| Part-# | Name | |
|-----------------------|-----------------------------------|------------------------------|
| 8 231 28 003 | Boring bar holder Ø 32 | |
| | Notation: | offset |
| | Version: | left |
| | Shank size [mm]: | 25.00 |
| | Shank type: | VDI |
| | Tool adaption: | Ø 32 |
| | Coolant: | IC/Ext |
| Center distance [mm]: | 75 | |
| 8 231 28 033 | Boring bar holder Ø 32 | |
| | Version: | left |
| | Shank size [mm]: | 25.00 |
| | Shank type: | VDI |
| | Tool adaption: | Ø 32 |
| | Coolant: | IC/Ext |
| | Please note: | demountable in right version |
| Center distance [mm]: | 95 | |
| 8 234 24 004 | Combi facing holder sq. 20 | |
| | Weight [kg]: | 2.320 |
| | Shank size [mm]: | 25.00 |
| | Shank type: | VDI |
| | Tool adaption: | Sq. 20 |
| | Coolant: | EXT |
| Please note: | demountable in left version | |
| 8 236 26 006 | Tool holder HT 4 | |
| | Notation: | 180° reversible |
| | Version: | doubletoothed |
| | Shank size [mm]: | 25.00 |
| | Shank type: | VDI |
| | Tool adaption: | HT 4 |
| | Coolant: | IC/Ext |
| Please note: | Fixation slide stone | |
| Center distance [mm]: | 75 | |
| 8 236 27 014 | Boring bar holder Ø 25 | |
| | Version: | doubletoothed |
| | Shank size [mm]: | 25.00 |
| | Shank type: | VDI |
| | Tool adaption: | Ø 25 |
| | Coolant: | IC/Ext |
| | Pressure max [bar]: | 100 |
| Center distance [mm]: | 95 | |
| 8 239 26 029 | Double tool holder HT 4 | |
| | Weight [kg]: | 2.840 |
| | Employment for: | Main- and sub spindle |
| | Shank size [mm]: | 25.00 |
| | Shank type: | VDI |
| | Tool adaption: | HT 4 |
| | Coolant: | IC/Ext |
| Center distance [mm]: | 75 | |

SPINNER

TC 300-SMCY

| Part-# | Name | |
|---------------------|---|---|
| 8 251 23 003 | Combi double turning holder sq.20/16 | |
| | Weight [kg]: | 1.920 |
| | Employment for: | Main- and sub spindle |
| | Shank size [mm]: | 25.00 |
| | Shank type: | VDI |
| | Tool adaption: | Sq. 20/16 |
| | Coolant: | EXT |
| | Please note: | usable as C1, C2, C3, C4 |
| 8 253 25 001 | Double boring bar holder Ø 16 | |
| | Weight [kg]: | 4.900 |
| | Shank size [mm]: | 25.00 |
| | Shank type: | VDI |
| | Tool adaption: | Ø 16 |
| | Coolant: | IC/Ext |
| | Center distance [mm]: | 70/105 |
| 8 253 26 010 | Multiple tool holder HT 4 | |
| | Weight [kg]: | 4.580 |
| | Version: | Special; double spindle |
| | Shank size [mm]: | 25.00 |
| | Shank type: | VDI |
| | Tool adaption: | HT 4 HT 4 HT 4 HT 4 |
| | Coolant: | IC/Ext |
| | Please note: | Check applicability; tool height 132,5 mm |
| | Center distance [mm]: | 70/112 |
| 8 253 26 011 | Double tool holder HT 4 | |
| | Weight [kg]: | 4.550 |
| | Version: | Special |
| | Shank size [mm]: | 25.00 |
| | Shank type: | VDI |
| | Tool adaption: | HT 4 HT 4 |
| | Coolant: | IC/Ext |
| | Please note: | Check applicability; tool height 132,5 mm |
| | Center distance [mm]: | 70/112 |
| 8 253 27 008 | Double boring bar holder Ø 25 | |
| | Weight [kg]: | 4.430 |
| | Shank size [mm]: | 25.00 |
| | Shank type: | VDI |
| | Tool adaption: | Ø 25 |
| | Coolant: | IC/Ext |
| | Center distance [mm]: | 70/105 |
| 8 262 29 015 | Stock stop VDI 25 - Ø 60 OD turret | |
| | Weight [kg]: | 2.730 |
| | Notation: | offset |
| | Version: | right |
| | Shank size [mm]: | 25.00 |
| | Shank type: | VDI |
| | Rotation max [1/min]: | 8000 |
| | Coolant: | no |



SPINNER

TC 300-SMCY

| Part-# | Name | |
|---------------------|---|---------------------|
| | Please note: | Lenght adjustable |
| | Center distance [mm]: | 75 |
| 8 274 21 001 | Tool holder D1-25x16 | |
| | Weight [kg]: | 1.020 |
| | Shank size [mm]: | 25.00 |
| | Shank type: | VDI |
| | Tool adaption: | Sq. 16/12 |
| | Coolant: | EXT |
| 8 274 21 002 | Tool holder D2-25x16 | |
| | Weight [kg]: | 1.220 |
| | Shank size [mm]: | 25.00 |
| | Shank type: | VDI |
| | Tool adaption: | Sq. 16/12 |
| | Coolant: | EXT |
| 8 320 23 014 | Cut-off holder, height adjustable SH 32 IC | |
| | Weight [kg]: | 1.370 |
| | Version: | universal |
| | Shank size [mm]: | 25.00 |
| | Shank type: | VDI |
| | Tool adaption: | Clampshaft SH 32 |
| | Coolant: | IC/Ext |
| | Pressure max [bar]: | 70 |
| 8 320 23 020 | Cut-off holder, height adjustable SH 32 IC | |
| | Weight [kg]: | 1.540 |
| | Version: | universal |
| | Shank size [mm]: | 25.00 |
| | Shank type: | VDI |
| | Tool adaption: | Clampshaft SH 32 |
| | Coolant: | IC/Ext |
| | Pressure max [bar]: | 70 |
| | Please note: | Clampshaft internal |

heimatec.u-tec®

heimatec.com

Products / Tool change systems /
u-tec® Tool-changing system



versions see catalog



heimatec.easy-quick

heimatec.com

Products / Tool change systems /
easy-quick HT quick-changing system



versions see catalog



heimatec.Capto™

heimatec.com

Products / Tool change systems /
heimatec.Capto™ quick-changing system



versions see catalog



heimatec.accessories

heimatec.com

Products / Accessories



versions see catalog





● heimatec overseas branches

○ global representations of heimatec

heimatec[®]

heimatec GmbH
Präzisionswerkzeuge
Carl-Benz-Str. 4
77871 Renchen
Germany

T +49 7843 9466 0
www.heimatec.com
info@heimatec.com

Please find the contact details of our worldwide trading partners on our website:
<https://heimatec.com/business-partners>