

**TOPSELLER -**  
many more available!

Live Tools

**heimatec**®

# HAAS

## SL-20 - Hybrid VB 12

Part-#	Tool adaption	Rotation max [1/min]	Gear ratio	Coolant	Pressure max.	Center distance
<b>Axial drilling and milling head</b>						
8 010 46 188	<b>ER 32 A - u-tec</b>	6.000	1:1	EXT	--	--
8 010 46 215	<b>ER 32 A - u-tec</b>	6.000	1:1	IC/Ext	100 bar	--
<b>Radial drilling and milling head</b>						
8 030 46 321	<b>ER 32 A - u-tec</b>	6.000	1:1	EXT	--	<b>69 mm</b>
8 030 46 330	<b>ER 32 A - u-tec</b>	6.000	1:1	IC/Ext	140 bar	<b>69 mm</b>
<b>Universal head</b>						
8 040 45 040	<b>ER 25 A - u-tec</b>	6.000	1:1	EXT	--	<b>87 mm</b>

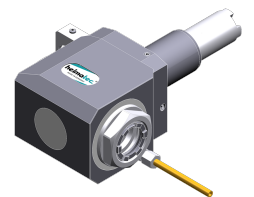
*Illustrations similar.*



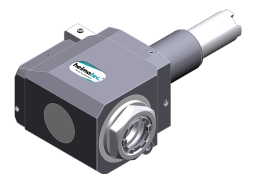
8 010 46 188



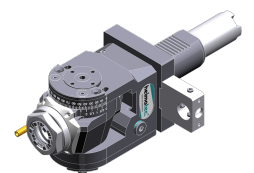
8 010 46 215



8 030 46 321



8 030 46 330



8 040 45 040

**TOPSELLER -**  
many more available!

Static Tools

**heimatec**®

# HAAS

## SL-20 - Hybrid VB 12

Part-#	Tool adaption	Coolant	Pressure max.	Center distance
<b>Universal turning holder</b>				
8 224 15 027	<b>Sq. 25</b>	EXT	--	--
<b>Boring bar holder</b>				
8 240 18 031	<b>Ø 32</b>	IC/Ext	--	<b>31,75 mm</b>
8 240 19 068	<b>Ø 40</b>	IC/Ext	--	<b>31,75 mm</b>
<b>Combi facing holder</b>				
8 244 15 012	<b>Sq. 25</b>	EXT	--	--
<b>Cut-off holder, height adjustable</b>				
8 320 43 009	<b>Clampshaft SH 32</b>	IC/Ext	70 bar	--

*Illustrations similar.*



8 320 43 009