

Mazak

QT Nexus 200
M/MS/MY/MSY -
12 Stationen



High-tech from heimatec - heimatec - Tools and systems for productive turning and milling

heimatec belongs to the international technology and quality leaders for precision tools and specializes in the development and production of high-precision static and live tools for all CNC lathes, CNC turn-/mill machines and CNC machining centers.

The range of products* spans from static BMT and VDI tool holders, live tools up to highly complex customer-specific individual solutions. heimatec, headquartered in Renchen, has a own subsidiary in Asia and India and numerous representatives as well as trading partners all over the world.

*OUR PRODCUTS

Static tool holders

Live tool units

Precision tools

Tools for turning and machining centres

Tools for swiss type lathes

Tool changing and uick-change systems

Tool systems for gear production

Digital tool management

This catalogue, including all its parts, is protected by copyright. Any use outside the restricted limitations of the Copyright Act without the consent of heimatec is inadmissible and liable to prosecution. This applies in particular to duplication, translation, microfilming and storage and processing in electronic systems.

heimatec GmbH reserves the right to make technical changes at any time without giving prior notice. This applies in particular to adjustments at any time to meet new or changed international standards, or in case of further developments of our products or manufacturing processes.

The current version of our General Terms and Conditions can be found on our website.

QT Nexus 200 M/MS/MY/MSY - 12 Stationen

| Part-# | Name | |
|---------------------|---|--------------------------------|
| 8 010 45 009 | Axial drilling and milling head ER 25 | |
| | Weight [kg]: | 3.920 |
| | Tool drive: | Flat (~DIN 1809) |
| | Shank size [mm]: | 40.00 |
| | Shank type: | VDI |
| | Tool adaption: | ER 25 |
| | Gear ratio [i]: | 1:1 |
| | Torque max [Nm]: | 50 |
| | Rotation max [1/min]: | 6000 |
| | Rotating direction: | same |
| | Coolant: | EXT |
| 8 010 46 044 | Axial drilling and milling head ER 32 IC | |
| | Weight [kg]: | 3.980 |
| | Tool drive: | Flat (~DIN 1809) |
| | Shank size [mm]: | 40.00 |
| | Shank type: | VDI |
| | Tool adaption: | ER 32 |
| | Gear ratio [i]: | 1:1 |
| | Torque max [Nm]: | 50 |
| | Rotation max [1/min]: | 6000 |
| | Rotating direction: | same |
| | Coolant: | IC/Ext |
| | Pressure max [bar]: | 25 |
| 8 010 46 239 | Axial drilling and milling head ER 32 AX UT IC | |
| | Weight [kg]: | 4.030 |
| | Tool drive: | Flat (~DIN 1809) |
| | Shank size [mm]: | 40.00 |
| | Shank type: | VDI |
| | Tool adaption: | ER 32 A - u-tec |
| | Gear ratio [i]: | 1:1 |
| | Torque max [Nm]: | 50 |
| | Rotation max [1/min]: | 6000 |
| | Rotating direction: | same |
| | Coolant: | IC/Ext |
| | Pressure max [bar]: | 25 |
| 8 011 44 003 | Axial milling head universal arbor 3/4" | |
| | Tool drive: | Flat (~DIN 1809) |
| | Shank size [mm]: | 40.00 |
| | Shank type: | VDI |
| | Tool adaption: | Universal arbor 3/4" (19,05mm) |
| | Gear ratio [i]: | 1:1 |
| | Torque max [Nm]: | 50 |
| | Rotation max [1/min]: | 6000 |
| | Rotating direction: | same |
| | Coolant: | EXT |
| 8 011 44 015 | Axial milling head universal arbor 16 | |
| | Tool drive: | Flat (~DIN 1809) |
| | Shank size [mm]: | 40.00 |
| | Shank type: | VDI |
| | Tool adaption: | Universal arbor 16 |
| | Gear ratio [i]: | 1:1 |
| | Torque max [Nm]: | 50 |
| | Rotation max [1/min]: | 6000 |
| | Rotating direction: | same |

QT Nexus 200 M/MS/MY/MSY - 12 Stationen

| Part-# | Name | |
|---------------------|---|-----------------------|
| | Coolant: | EXT |
| | Please note: | stronger bearing |
| 8 018 45 000 | Axial drilling and milling head ER 25 | |
| | Weight [kg]: | 6.500 |
| | Notation: | Y-axes adjustable |
| | Tool drive: | Flat (~DIN 1809) |
| | Shank size [mm]: | 40.00 |
| | Shank type: | VDI |
| | Tool adaption: | ER 25 |
| | Gear ratio [i]: | 1:1 |
| | Torque max [Nm]: | 50 |
| | Rotation max [1/min]: | 6000 |
| | Rotating direction: | opposite |
| | Coolant: | EXT |
| 8 019 42 000 | Axial drilling and milling head Weldon 6 | |
| | Notation: | offset |
| | Tool drive: | Flat (~DIN 1809) |
| | Shank size [mm]: | 40.00 |
| | Shank type: | VDI |
| | Tool adaption: | Weldon (DIN 1835 b) 6 |
| | Gear ratio [i]: | 1:1 |
| | Torque max [Nm]: | 50 |
| | Rotation max [1/min]: | 6000 |
| | Rotating direction: | opposite |
| | Coolant: | EXT |
| | Offset [mm]: | 50 |
| 8 019 43 001 | Axial drilling and milling head Weldon 8 | |
| | Notation: | offset |
| | Tool drive: | Flat (~DIN 1809) |
| | Shank size [mm]: | 40.00 |
| | Shank type: | VDI |
| | Tool adaption: | Weldon (DIN 1835 b) 8 |
| | Gear ratio [i]: | 1:1 |
| | Torque max [Nm]: | 50 |
| | Rotation max [1/min]: | 6000 |
| | Rotating direction: | opposite |
| | Coolant: | EXT |
| | Offset [mm]: | 50 |
| 8 019 44 000 | Axial milling head universal arbor 16 | |
| | Notation: | offset |
| | Tool drive: | Flat (~DIN 1809) |
| | Shank size [mm]: | 40.00 |
| | Shank type: | VDI |
| | Tool adaption: | Universal arbor 16 |
| | Gear ratio [i]: | 1:2 |
| | Torque max [Nm]: | 25 |
| | Rotation max [1/min]: | 12000 |
| | Rotating direction: | opposite |
| | Coolant: | EXT |
| | Offset [mm]: | 50 |

QT Nexus 200 M/MS/MY/MSY - 12 Stationen

| Part-# | Name | |
|---------------------|--|------------------------|
| 8 019 44 006 | Axial drilling and milling head Weldon 10 | |
| | Notation: | offset |
| | Tool drive: | Flat (~DIN 1809) |
| | Shank size [mm]: | 40.00 |
| | Shank type: | VDI |
| | Tool adaption: | Weldon (DIN 1835 b) 10 |
| | Gear ratio [i]: | 1:1 |
| | Torque max [Nm]: | 50 |
| | Rotation max [1/min]: | 6000 |
| | Rotating direction: | opposite |
| | Coolant: | EXT |
| | Offset [mm]: | 50 |
| 8 019 45 015 | Axial milling head universal arbor 22 | |
| | Notation: | offset |
| | Tool drive: | Flat (~DIN 1809) |
| | Shank size [mm]: | 40.00 |
| | Shank type: | VDI |
| | Tool adaption: | Universal arbor 22 |
| | Gear ratio [i]: | 1:2 |
| | Torque max [Nm]: | 25 |
| | Rotation max [1/min]: | 12000 |
| | Rotating direction: | opposite |
| | Coolant: | EXT |
| | Offset [mm]: | 50 |
| 8 019 45 036 | Axial milling head universal arbor 22 | |
| | Weight [kg]: | 6.010 |
| | Notation: | offset |
| | Tool drive: | Flat (~DIN 1809) |
| | Shank size [mm]: | 40.00 |
| | Shank type: | VDI |
| | Tool adaption: | Universal arbor 22 |
| | Gear ratio [i]: | 1:1 |
| | Torque max [Nm]: | 50 |
| | Rotation max [1/min]: | 6000 |
| | Rotating direction: | opposite |
| | Coolant: | EXT |
| | Please note: | stronger bearing |
| 8 019 45 040 | Axial milling head universal arbor 22 | |
| | Notation: | offset |
| | Tool drive: | Flat (~DIN 1809) |
| | Shank size [mm]: | 40.00 |
| | Shank type: | VDI |
| | Tool adaption: | Universal arbor 22 |
| | Gear ratio [i]: | 2:1 |
| | Torque max [Nm]: | 80 |
| | Rotation max [1/min]: | 3000 |
| | Rotating direction: | opposite |
| | Coolant: | EXT |
| | Please note: | stronger bearing |
| | Offset [mm]: | 50 |

QT Nexus 200 M/MS/MY/MSY - 12 Stationen

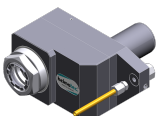
| Part-# | Name | |
|---------------------|---|-------------------------------------|
| 8 019 45 049 | Axial milling head universal arbor 22 | |
| | Notation: | offset |
| | Version: | Special |
| | Tool drive: | Flat (~DIN 1809) |
| | Shank size [mm]: | 40.00 |
| | Shank type: | VDI |
| | Tool adaption: | Universal arbor 22 |
| | Gear ratio [i]: | 1:1 |
| | Torque max [Nm]: | 50 |
| | Rotation max [1/min]: | 6000 |
| | Rotating direction: | opposite |
| | Coolant: | EXT |
| | Please note: | stronger bearing (extended version) |
| | Offset [mm]: | 50 |
| 8 019 45 070 | Axial drilling and milling head Weldon 16 IC | |
| | Notation: | offset |
| | Tool drive: | Flat (~DIN 1809) |
| | Shank size [mm]: | 40.00 |
| | Shank type: | VDI |
| | Tool adaption: | Weldon (DIN 1835 b) 16 |
| | Gear ratio [i]: | 1:1 |
| | Torque max [Nm]: | 50 |
| | Rotation max [1/min]: | 6000 |
| | Rotating direction: | opposite |
| | Coolant: | IC/Ext |
| | Pressure max [bar]: | 25 |
| | Please note: | stronger bearing |
| | Offset [mm]: | 50 |
| 8 019 45 108 | Axial drilling and milling head ER 25 AX UT | |
| | Weight [kg]: | 5.450 |
| | Notation: | offset |
| | Tool drive: | Flat (~DIN 1809) |
| | Shank size [mm]: | 40.00 |
| | Shank type: | VDI |
| | Tool adaption: | ER 25 A - u-tec |
| | Gear ratio [i]: | 1:1 |
| | Torque max [Nm]: | 50 |
| | Rotation max [1/min]: | 6000 |
| | Rotating direction: | opposite |
| | Coolant: | EXT |
| | Please note: | stronger bearing |
| | Offset [mm]: | 50 |
| 8 019 45 109 | Axial drilling and milling head ER 25 AX UT IC | |
| | Weight [kg]: | 5.850 |
| | Notation: | offset |
| | Tool drive: | Flat (~DIN 1809) |
| | Shank size [mm]: | 40.00 |
| | Shank type: | VDI |
| | Tool adaption: | ER 25 A - u-tec |
| | Gear ratio [i]: | 1:1 |
| | Torque max [Nm]: | 50 |
| | Rotation max [1/min]: | 6000 |
| | Rotating direction: | opposite |
| | Coolant: | IC/Ext |
| | Pressure max [bar]: | 140 |

QT Nexus 200 M/MS/MY/MSY - 12 Stationen

| Part-# | Name | |
|---------------------|--|------------------|
| | Please note: | stronger bearing |
| | Offset [mm]: | 50 |
| 8 019 45 143 | Axial drilling and milling head ER 25 AX UT | |
| | Weight [kg]: | 7.280 |
| | Notation: | offset |
| | Tool drive: | Flat (~DIN 1809) |
| | Shank size [mm]: | 40.00 |
| | Shank type: | VDI |
| | Tool adaption: | ER 25 A - u-tec |
| | Gear ratio [i]: | 1:3 |
| | Torque max [Nm]: | 16 |
| | Rotation max [1/min]: | 15000 |
| | Rotating direction: | opposite |
| | Coolant: | EXT |
| | Please note: | stronger bearing |
| | Offset [mm]: | 50 |
| 8 019 46 004 | Axial drilling and milling head ER 32 | |
| | Weight [kg]: | 5.480 |
| | Notation: | offset |
| | Tool drive: | Flat (~DIN 1809) |
| | Shank size [mm]: | 40.00 |
| | Shank type: | VDI |
| | Tool adaption: | ER 32 |
| | Gear ratio [i]: | 1:1 |
| | Torque max [Nm]: | 50 |
| | Rotation max [1/min]: | 6000 |
| | Rotating direction: | opposite |
| | Coolant: | EXT |
| | Offset [mm]: | 50 |
| 8 019 46 010 | Axial drilling and milling head ER 32 IC | |
| | Weight [kg]: | 5.700 |
| | Notation: | offset |
| | Tool drive: | Flat (~DIN 1809) |
| | Shank size [mm]: | 40.00 |
| | Shank type: | VDI |
| | Tool adaption: | ER 32 |
| | Gear ratio [i]: | 1:1 |
| | Torque max [Nm]: | 50 |
| | Rotation max [1/min]: | 6000 |
| | Rotating direction: | opposite |
| | Coolant: | IC/Ext |
| | Pressure max [bar]: | 140 |
| | Offset [mm]: | 50 |
| 8 019 46 014 | Axial drilling and milling head ER 32 AX UT | |
| | Notation: | offset |
| | Tool drive: | Flat (~DIN 1809) |
| | Shank size [mm]: | 40.00 |
| | Shank type: | VDI |
| | Tool adaption: | ER 32 A - u-tec |
| | Gear ratio [i]: | 2:1 |
| | Torque max [Nm]: | 80 |
| | Rotation max [1/min]: | 3000 |
| | Rotating direction: | opposite |
| | Coolant: | EXT |

QT Nexus 200 M/MS/MY/MSY - 12 Stationen

| Part-# | Name | |
|---------------------|---|------------------|
| | Please note: | stronger bearing |
| | Offset [mm]: | 50 |
| 8 019 46 062 | Axial drilling and milling head ER 32 IC | |
| | Notation: | offset |
| | Employment for: | Sub spindle |
| | Tool drive: | Flat (~DIN 1809) |
| | Shank size [mm]: | 40.00 |
| | Shank type: | VDI |
| | Tool adaption: | ER 32 |
| | Gear ratio [i]: | 1:1 |
| | Torque max [Nm]: | 50 |
| | Rotation max [1/min]: | 6000 |
| | Rotating direction: | opposite |
| | Coolant: | IC/Ext |
| | Pressure max [bar]: | 140 |
| | Offset [mm]: | 50 |
| 8 019 46 071 | Axial drilling and milling head ER 32 AX UT IC | |
| | Weight [kg]: | 5.990 |
| | Notation: | offset |
| | Tool drive: | Flat (~DIN 1809) |
| | Shank size [mm]: | 40.00 |
| | Shank type: | VDI |
| | Tool adaption: | ER 32 A - u-tec |
| | Gear ratio [i]: | 1:1 |
| | Torque max [Nm]: | 50 |
| | Rotation max [1/min]: | 6000 |
| | Rotating direction: | opposite |
| | Coolant: | IC/Ext |
| | Pressure max [bar]: | 140 |
| | Please note: | stronger bearing |
| | Offset [mm]: | 50 |
| 8 019 46 072 | Axial drilling and milling head HT 4 | |
| | Notation: | offset |
| | Tool drive: | Flat (~DIN 1809) |
| | Shank size [mm]: | 40.00 |
| | Shank type: | VDI |
| | Tool adaption: | HT 4 |
| | Gear ratio [i]: | 1:1 |
| | Torque max [Nm]: | 50 |
| | Rotation max [1/min]: | 6000 |
| | Rotating direction: | opposite |
| | Coolant: | EXT |
| | Offset [mm]: | 50 |
| 8 019 46 104 | Axial drilling and milling head ER 32 AX UT | |
| | Weight [kg]: | 5.850 |
| | Notation: | offset |
| | Tool drive: | Flat (~DIN 1809) |
| | Shank size [mm]: | 40.00 |
| | Shank type: | VDI |
| | Tool adaption: | ER 32 A - u-tec |
| | Gear ratio [i]: | 1:1 |
| | Torque max [Nm]: | 50 |
| | Rotation max [1/min]: | 6000 |



QT Nexus 200 M/MS/MY/MSY - 12 Stationen

| Part-# | Name | |
|---------------------|---|------------------|
| | Rotating direction: | opposite |
| | Coolant: | EXT |
| | Please note: | stronger bearing |
| | Offset [mm]: | 50 |
| 8 019 46 111 | Axial drilling and milling head ER 32 AX UT IC | |
| | Weight [kg]: | 7.320 |
| | Notation: | offset |
| | Tool drive: | Flat (~DIN 1809) |
| | Shank size [mm]: | 40.00 |
| | Shank type: | VDI |
| | Tool adaption: | ER 32 A - u-tec |
| | Gear ratio [i]: | 1:2 |
| | Torque max [Nm]: | 32 |
| | Rotation max [1/min]: | 12000 |
| | Rotating direction: | opposite |
| | Coolant: | IC/Ext |
| | Pressure max [bar]: | 140 |
| 8 019 46 127 | Axial drilling and milling head ER 32 AX UT IC | |
| | Weight [kg]: | 6.860 |
| | Notation: | offset |
| | Employment for: | Sub spindle |
| | Tool drive: | Flat (~DIN 1809) |
| | Shank size [mm]: | 40.00 |
| | Shank type: | VDI |
| | Tool adaption: | ER 32 A - u-tec |
| | Gear ratio [i]: | 1:1 |
| | Torque max [Nm]: | 50 |
| | Rotation max [1/min]: | 6000 |
| | Rotating direction: | opposite |
| | Coolant: | IC/Ext |
| | Pressure max [bar]: | 140 |
| | Please note: | stronger bearing |
| | Offset [mm]: | 50 |
| 8 019 46 132 | Axial drilling and milling head ER 32 AX UT | |
| | Weight [kg]: | 6.790 |
| | Notation: | offset |
| | Employment for: | Sub spindle |
| | Tool drive: | Flat (~DIN 1809) |
| | Shank size [mm]: | 40.00 |
| | Shank type: | VDI |
| | Tool adaption: | ER 32 A - u-tec |
| | Gear ratio [i]: | 1:1 |
| | Torque max [Nm]: | 50 |
| | Rotation max [1/min]: | 6000 |
| | Rotating direction: | opposite |
| | Coolant: | EXT |
| | Please note: | stronger bearing |
| | Offset [mm]: | 50 |



QT Nexus 200 M/MS/MY/MSY - 12 Stationen

| Part-# | Name | |
|---------------------|---|------------------------|
| 8 019 46 151 | Axial drilling and milling head HT 4 IC | |
| | Weight [kg]: | 5.570 |
| | Notation: | offset |
| | Tool drive: | Flat (~DIN 1809) |
| | Shank size [mm]: | 40.00 |
| | Shank type: | VDI |
| | Tool adaption: | HT 4 |
| | Gear ratio [i]: | 1:1 |
| | Torque max [Nm]: | 50 |
| | Rotation max [1/min]: | 6000 |
| | Rotating direction: | opposite |
| | Coolant: | IC/Ext |
| | Pressure max [bar]: | 140 |
| | Offset [mm]: | 50 |
| 8 019 46 186 | Axial drilling and milling head Weldon 20 | |
| | Weight [kg]: | 6.180 |
| | Notation: | offset |
| | Tool drive: | Flat (~DIN 1809) |
| | Shank size [mm]: | 40.00 |
| | Shank type: | VDI |
| | Tool adaption: | Weldon (DIN 1835 b) 20 |
| | Gear ratio [i]: | 1:1 |
| | Torque max [Nm]: | 50 |
| | Rotation max [1/min]: | 6000 |
| | Rotating direction: | opposite |
| | Coolant: | EXT |
| | Please note: | stronger bearing |
| | Offset [mm]: | 50 |
| 8 019 46 202 | Axial drilling and milling head ER 32 AX UT IC | |
| | Weight [kg]: | 7.280 |
| | Notation: | offset |
| | Tool drive: | Flat (~DIN 1809) |
| | Shank size [mm]: | 40.00 |
| | Shank type: | VDI |
| | Tool adaption: | ER 32 A - u-tec |
| | Gear ratio [i]: | 2:1 |
| | Torque max [Nm]: | 80 |
| | Rotation max [1/min]: | 3000 |
| | Rotating direction: | opposite |
| | Coolant: | IC/Ext |
| | Pressure max [bar]: | 140 |
| | Please note: | stronger bearing |
| | Offset [mm]: | 50 |
| 8 019 46 221 | Axial drilling and milling head ER 32 AX UT | |
| | Weight [kg]: | 9.330 |
| | Notation: | offset |
| | Employment for: | Main spindle |
| | Tool drive: | Flat (~DIN 1809) |
| | Shank size [mm]: | 40.00 |
| | Shank type: | VDI |
| | Tool adaption: | ER 32 A - u-tec |
| | Gear ratio [i]: | 1:1 |
| | Torque max [Nm]: | 50 |
| | Rotation max [1/min]: | 6000 |
| | Rotating direction: | opposite |

QT Nexus 200 M/MS/MY/MSY - 12 Stationen

| Part-# | Name | |
|---------------------|--|------------------------|
| | Coolant: | EXT |
| | Please note: | stronger bearing |
| | Offset [mm]: | 115 |
| 8 019 46 224 | Axial drilling and milling head HT 4 IC | |
| | Weight [kg]: | 7.480 |
| | Notation: | offset |
| | Tool drive: | Flat (~DIN 1809) |
| | Shank size [mm]: | 40.00 |
| | Shank type: | VDI |
| | Tool adaption: | HT 4 |
| | Gear ratio [i]: | 1:3 |
| | Torque max [Nm]: | 16 |
| | Rotation max [1/min]: | 15000 |
| | Rotating direction: | opposite |
| | Coolant: | IC/Ext |
| | Pressure max [bar]: | 140 |
| | Please note: | stronger bearing |
| | Offset [mm]: | 50 |
| 8 019 47 003 | Axial drilling and milling head Weldon 25 | |
| | Weight [kg]: | 6.270 |
| | Notation: | offset |
| | Tool drive: | Flat (~DIN 1809) |
| | Shank size [mm]: | 40.00 |
| | Shank type: | VDI |
| | Tool adaption: | Weldon (DIN 1835 b) 25 |
| | Gear ratio [i]: | 1:1 |
| | Torque max [Nm]: | 50 |
| | Rotation max [1/min]: | 6000 |
| | Rotating direction: | opposite |
| | Coolant: | EXT |
| | Please note: | stronger bearing |
| | Offset [mm]: | 50 |
| 8 019 47 006 | Axial drilling and milling head HT 5 | |
| | Weight [kg]: | 5.430 |
| | Notation: | offset |
| | Tool drive: | Flat (~DIN 1809) |
| | Shank size [mm]: | 40.00 |
| | Shank type: | VDI |
| | Tool adaption: | HT 5 |
| | Gear ratio [i]: | 1:1 |
| | Torque max [Nm]: | 50 |
| | Rotation max [1/min]: | 6000 |
| | Rotating direction: | opposite |
| | Coolant: | EXT |
| | Offset [mm]: | 50 |
| 8 019 47 009 | Axial drilling and milling head HT 5 IC | |
| | Weight [kg]: | 5.620 |
| | Notation: | offset |
| | Tool drive: | Flat (~DIN 1809) |
| | Shank size [mm]: | 40.00 |
| | Shank type: | VDI |
| | Tool adaption: | HT 5 |
| | Gear ratio [i]: | 1:1 |
| | Torque max [Nm]: | 50 |

QT Nexus 200 M/MS/MY/MSY - 12 Stationen

| Part-# | Name | |
|---------------------|---|-----------------------|
| | Rotation max [1/min]: | 6000 |
| | Rotating direction: | opposite |
| | Coolant: | IC/Ext |
| | Pressure max [bar]: | 140 |
| 8 019 47 015 | Axial drilling and milling head HT 5 | |
| | Notation: | offset |
| | Tool drive: | Flat (~DIN 1809) |
| | Shank size [mm]: | 40.00 |
| | Shank type: | VDI |
| | Tool adaption: | HT 5 |
| | Gear ratio [i]: | 1:1 |
| | Torque max [Nm]: | 50 |
| | Rotation max [1/min]: | 6000 |
| | Rotating direction: | opposite |
| | Coolant: | EXT |
| | Please note: | stronger bearing |
| | Offset [mm]: | 50 |
| 8 019 47 016 | Axial drilling and milling head HT 5 IC | |
| | Weight [kg]: | 5.980 |
| | Notation: | offset |
| | Tool drive: | Flat (~DIN 1809) |
| | Shank size [mm]: | 40.00 |
| | Shank type: | VDI |
| | Tool adaption: | HT 5 |
| | Gear ratio [i]: | 1:1 |
| | Torque max [Nm]: | 50 |
| | Rotation max [1/min]: | 6000 |
| | Rotating direction: | opposite |
| | Coolant: | IC/Ext |
| | Pressure max [bar]: | 140 |
| | Please note: | stronger bearing |
| | Offset [mm]: | 50 |
| 8 030 42 002 | Radial drilling and milling head Weldon 6 IC | |
| | Tool drive: | Flat (~DIN 1809) |
| | Shank size [mm]: | 40.00 |
| | Shank type: | VDI |
| | Tool adaption: | Weldon (DIN 1835 b) 6 |
| | Gear ratio [i]: | 1:2 |
| | Torque max [Nm]: | 16 |
| | Rotation max [1/min]: | 12000 |
| | Rotating direction: | opposite |
| | Coolant: | IC/Ext |
| | Pressure max [bar]: | 25 |
| 8 030 43 006 | Radial drilling and milling head Weldon 8 IC | |
| | Employment for: | Main spindle |
| | Tool drive: | Flat (~DIN 1809) |
| | Shank size [mm]: | 40.00 |
| | Shank type: | VDI |
| | Tool adaption: | Weldon (DIN 1835 b) 8 |
| | Gear ratio [i]: | 1:1 |
| | Torque max [Nm]: | 50 |
| | Rotation max [1/min]: | 6000 |
| | Rotating direction: | opposite |
| | Coolant: | IC/Ext |

QT Nexus 200 M/MS/MY/MSY - 12 Stationen

| Part-# | Name | |
|---------------------|--|------------------------|
| | Pressure max [bar]: | 25 |
| | Center distance [mm]: | 130 |
| 8 030 44 085 | Radial drilling and milling head ER 16 AX UT | |
| | Weight [kg]: | 9.570 |
| | Employment for: | Main spindle |
| | Tool drive: | Flat (~DIN 1809) |
| | Shank size [mm]: | 40.00 |
| | Shank type: | VDI |
| | Tool adaption: | ER 16 A - u-tec |
| | Gear ratio [i]: | 1:4 |
| | Torque max [Nm]: | 5 |
| | Rotation max [1/min]: | 24000 |
| | Rotating direction: | opposite |
| | Coolant: | EXT |
| | Center distance [mm]: | 130 |
| 8 030 45 048 | Radial drilling and milling head ER 25 | |
| | Employment for: | Main spindle |
| | Tool drive: | Flat (~DIN 1809) |
| | Shank size [mm]: | 40.00 |
| | Shank type: | VDI |
| | Tool adaption: | ER 25 |
| | Gear ratio [i]: | 1:2 |
| | Torque max [Nm]: | 16 |
| | Rotation max [1/min]: | 12000 |
| | Rotating direction: | opposite |
| | Coolant: | EXT |
| | Center distance [mm]: | 130 |
| 8 030 45 068 | Radial drilling and milling head ER 25 | |
| | Weight [kg]: | 8.680 |
| | Tool drive: | Flat (~DIN 1809) |
| | Shank size [mm]: | 40.00 |
| | Shank type: | VDI |
| | Tool adaption: | ER 25 |
| | Gear ratio [i]: | 1:3 |
| | Torque max [Nm]: | 8 |
| | Rotation max [1/min]: | 12000 |
| | Rotating direction: | opposite |
| | Coolant: | EXT |
| | Center distance [mm]: | 130 |
| 8 030 45 116 | Radial drilling and milling head Weldon 16 IC | |
| | Employment for: | Main spindle |
| | Tool drive: | Flat (~DIN 1809) |
| | Shank size [mm]: | 40.00 |
| | Shank type: | VDI |
| | Tool adaption: | Weldon (DIN 1835 b) 16 |
| | Gear ratio [i]: | 1:1 |
| | Torque max [Nm]: | 50 |
| | Rotation max [1/min]: | 6000 |
| | Rotating direction: | opposite |
| | Coolant: | IC/Ext |
| | Pressure max [bar]: | 25 |
| | Please note: | stronger bearing |
| | Center distance [mm]: | 130 |

QT Nexus 200 M/MS/MY/MSY - 12 Stationen

| Part-# | Name |
|---------------------|--|
| 8 030 45 174 | Radial drilling and milling head ER 25 AX UT IC |
| | Weight [kg]: 8.820 |
| | Employment for: Main spindle |
| | Tool drive: Flat (~DIN 1809) |
| | Shank size [mm]: 40.00 |
| | Shank type: VDI |
| | Tool adaption: ER 25 A - u-tec |
| | Gear ratio [i]: 1:3 |
| | Torque max [Nm]: 12 |
| | Rotation max [1/min]: 15000 |
| | Rotating direction: same |
| | Coolant: IC/Ext |
| | Pressure max [bar]: 140 |
| | Please note: stronger bearing |
| | Center distance [mm]: 130 |
| 8 030 45 205 | Radial drilling and milling head ER 25 AX UT IC |
| | Weight [kg]: 8.890 |
| | Employment for: Main spindle |
| | Tool drive: Flat (~DIN 1809) |
| | Shank size [mm]: 40.00 |
| | Shank type: VDI |
| | Tool adaption: ER 25 A - u-tec |
| | Gear ratio [i]: 1:1 |
| | Torque max [Nm]: 50 |
| | Rotation max [1/min]: 6000 |
| | Rotating direction: opposite |
| | Coolant: IC/Ext |
| | Pressure max [bar]: 140 |
| | Center distance [mm]: 130 |
| 8 030 45 209 | Radial drilling and milling head ER 25 AX UT |
| | Weight [kg]: 8.380 |
| | Employment for: Main spindle |
| | Tool drive: Flat (~DIN 1809) |
| | Shank size [mm]: 40.00 |
| | Shank type: VDI |
| | Tool adaption: ER 25 A - u-tec |
| | Gear ratio [i]: 1:1 |
| | Torque max [Nm]: 50 |
| | Rotation max [1/min]: 6000 |
| | Rotating direction: opposite |
| | Coolant: EXT |
| | Center distance [mm]: 130 |
| 8 030 45 247 | Radial drilling and milling head ER 25 AX UT |
| | Weight [kg]: 8.610 |
| | Employment for: Main spindle |
| | Tool drive: Flat (~DIN 1809) |
| | Shank size [mm]: 40.00 |
| | Shank type: VDI |
| | Tool adaption: ER 25 A - u-tec |
| | Gear ratio [i]: 1:3 |
| | Torque max [Nm]: 12 |
| | Rotation max [1/min]: 15000 |
| | Rotating direction: same |
| | Coolant: EXT |
| | Please note: stronger bearing |

QT Nexus 200 M/MS/MY/MSY - 12 Stationen

| Part-# | Name | |
|---------------------|--|------------------|
| | Center distance [mm]: | 130 |
| 8 030 45 303 | Radial drilling and milling head ER 25 AX UT IC | |
| | Weight [kg]: | 8.830 |
| | Employment for: | Sub spindle |
| | Tool drive: | Flat (~DIN 1809) |
| | Shank size [mm]: | 40.00 |
| | Shank type: | VDI |
| | Tool adaption: | ER 25 A - u-tec |
| | Gear ratio [i]: | 1:3 |
| | Torque max [Nm]: | 12 |
| | Rotation max [1/min]: | 15000 |
| | Rotating direction: | same |
| | Coolant: | IC/Ext |
| | Pressure max [bar]: | 140 |
| | Please note: | stronger bearing |
| | Center distance [mm]: | 130 |
| 8 030 46 039 | Radial drilling and milling head ER 32 IC | |
| | Weight [kg]: | 9.040 |
| | Employment for: | Main spindle |
| | Tool drive: | Flat (~DIN 1809) |
| | Shank size [mm]: | 40.00 |
| | Shank type: | VDI |
| | Tool adaption: | ER 32 |
| | Gear ratio [i]: | 1:1 |
| | Torque max [Nm]: | 50 |
| | Rotation max [1/min]: | 6000 |
| | Rotating direction: | opposite |
| | Coolant: | IC/Ext |
| | Pressure max [bar]: | 140 |
| | Center distance [mm]: | 130 |
| 8 030 46 064 | Radial drilling and milling head ER 32 | |
| | Weight [kg]: | 8.480 |
| | Employment for: | Main spindle |
| | Tool drive: | Flat (~DIN 1809) |
| | Shank size [mm]: | 40.00 |
| | Shank type: | VDI |
| | Tool adaption: | ER 32 |
| | Gear ratio [i]: | 2:1 |
| | Torque max [Nm]: | 63 |
| | Rotation max [1/min]: | 4000 |
| | Rotating direction: | opposite |
| | Coolant: | EXT |
| | Center distance [mm]: | 130 |
| 8 030 46 098 | Radial drilling and milling head ER 32 | |
| | Weight [kg]: | 9.060 |
| | Employment for: | Main spindle |
| | Tool drive: | Flat (~DIN 1809) |
| | Shank size [mm]: | 40.00 |
| | Shank type: | VDI |
| | Tool adaption: | ER 32 |
| | Gear ratio [i]: | 1:1 |
| | Torque max [Nm]: | 50 |
| | Rotation max [1/min]: | 6000 |
| | Rotating direction: | opposite |

QT Nexus 200 M/MS/MY/MSY - 12 Stationen

| Part-# | Name | |
|---------------------|---|------------------------|
| | Coolant: | EXT |
| | Please note: | stronger bearing |
| | Center distance [mm]: | 130 |
| 8 030 46 108 | Radial drilling and milling head ER 32 | |
| | Version: | Special |
| | Tool drive: | Flat (~DIN 1809) |
| | Shank size [mm]: | 40.00 |
| | Shank type: | VDI |
| | Tool adaption: | ER 32 |
| | Gear ratio [i]: | 1:1 |
| | Torque max [Nm]: | 50 |
| | Rotation max [1/min]: | 6000 |
| | Rotating direction: | opposite |
| | Coolant: | EXT |
| | Center distance [mm]: | 100 |
| 8 030 46 147 | Radial drilling and milling head ER 32 AS IC | |
| | Weight [kg]: | 9.400 |
| | Tool drive: | Flat (~DIN 1809) |
| | Shank size [mm]: | 40.00 |
| | Shank type: | VDI |
| | Tool adaption: | ER 32 |
| | Gear ratio [i]: | 1:2 |
| | Torque max [Nm]: | 16 |
| | Rotation max [1/min]: | 12000 |
| | Rotating direction: | opposite |
| | Coolant: | IC |
| | Center distance [mm]: | 130 |
| 8 030 46 174 | Radial drilling and milling head Weldon 20 | |
| | Weight [kg]: | 9.120 |
| | Employment for: | Main spindle |
| | Tool drive: | Flat (~DIN 1809) |
| | Shank size [mm]: | 40.00 |
| | Shank type: | VDI |
| | Tool adaption: | Weldon (DIN 1835 b) 20 |
| | Gear ratio [i]: | 1:1 |
| | Torque max [Nm]: | 50 |
| | Rotation max [1/min]: | 6000 |
| | Rotating direction: | opposite |
| | Coolant: | EXT |
| | Please note: | stronger bearing |
| | Center distance [mm]: | 130 |
| 8 030 46 179 | Radial drilling and milling head ER 32 IC | |
| | Tool drive: | Flat (~DIN 1809) |
| | Shank size [mm]: | 40.00 |
| | Shank type: | VDI |
| | Tool adaption: | ER 32 |
| | Gear ratio [i]: | 2:1 |
| | Torque max [Nm]: | 63 |
| | Rotation max [1/min]: | 3000 |
| | Rotating direction: | opposite |
| | Coolant: | IC/Ext |
| | Pressure max [bar]: | 25 |
| | Please note: | stronger bearing |
| | Center distance [mm]: | 130 |

QT Nexus 200 M/MS/MY/MSY - 12 Stationen

| Part-# | Name | |
|---------------------|--|------------------------|
| 8 030 46 189 | Radial drilling and milling head Weldon 20 IC | |
| | Employment for: | Main spindle |
| | Tool drive: | Flat (~DIN 1809) |
| | Shank size [mm]: | 40.00 |
| | Shank type: | VDI |
| | Tool adaption: | Weldon (DIN 1835 b) 20 |
| | Gear ratio [i]: | 1:1 |
| | Torque max [Nm]: | 50 |
| | Rotation max [1/min]: | 6000 |
| | Rotating direction: | opposite |
| | Coolant: | IC/Ext |
| | Pressure max [bar]: | 25 |
| | Please note: | stronger bearing |
| | Center distance [mm]: | 130 |
| 8 030 46 293 | Radial drilling and milling head ER 32 AX UT IC | |
| | Weight [kg]: | 8.820 |
| | Employment for: | Main spindle |
| | Tool drive: | Flat (~DIN 1809) |
| | Shank size [mm]: | 40.00 |
| | Shank type: | VDI |
| | Tool adaption: | ER 32 A - u-tec |
| | Gear ratio [i]: | 1:1 |
| | Torque max [Nm]: | 50 |
| | Rotation max [1/min]: | 6000 |
| | Rotating direction: | opposite |
| | Coolant: | IC/Ext |
| | Pressure max [bar]: | 140 |
| | Center distance [mm]: | 130 |
| 8 030 46 296 | Radial drilling and milling head ER 32 AX UT | |
| | Weight [kg]: | 8.240 |
| | Employment for: | Main spindle |
| | Tool drive: | Flat (~DIN 1809) |
| | Shank size [mm]: | 40.00 |
| | Shank type: | VDI |
| | Tool adaption: | ER 32 A - u-tec |
| | Gear ratio [i]: | 1:1 |
| | Torque max [Nm]: | 50 |
| | Rotation max [1/min]: | 6000 |
| | Rotating direction: | opposite |
| | Coolant: | EXT |
| | Center distance [mm]: | 130 |
| 8 030 46 298 | Radial drilling and milling head ER 32 AX UT | |
| | Weight [kg]: | 9.330 |
| | Tool drive: | Flat (~DIN 1809) |
| | Shank size [mm]: | 40.00 |
| | Shank type: | VDI |
| | Tool adaption: | ER 32 A - u-tec |
| | Gear ratio [i]: | 1:2 |
| | Torque max [Nm]: | 16 |
| | Rotation max [1/min]: | 12000 |
| | Rotating direction: | opposite |
| | Coolant: | EXT |
| | Please note: | stronger bearing |
| | Center distance [mm]: | 130 |

QT Nexus 200 M/MS/MY/MSY - 12 Stationen

| Part-# | Name | |
|---------------------|--|------------------|
| 8 030 46 305 | Radial drilling and milling head ER 32 AX UT | |
| | Weight [kg]: | 8.080 |
| | Employment for: | Sub spindle |
| | Tool drive: | Flat (~DIN 1809) |
| | Shank size [mm]: | 40.00 |
| | Shank type: | VDI |
| | Tool adaption: | ER 32 A - u-tec |
| | Gear ratio [i]: | 1:1 |
| | Torque max [Nm]: | 50 |
| | Rotation max [1/min]: | 6000 |
| | Rotating direction: | opposite |
| | Coolant: | EXT |
| | Center distance [mm]: | 130 |
| 8 030 46 310 | Radial drilling and milling head ER 32 AX UT IC | |
| | Weight [kg]: | 9.790 |
| | Tool drive: | Flat (~DIN 1809) |
| | Shank size [mm]: | 40.00 |
| | Shank type: | VDI |
| | Tool adaption: | ER 32 A - u-tec |
| | Gear ratio [i]: | 1:2 |
| | Torque max [Nm]: | 16 |
| | Rotation max [1/min]: | 12000 |
| | Rotating direction: | opposite |
| | Coolant: | IC/Ext |
| | Pressure max [bar]: | 140 |
| | Please note: | stronger bearing |
| | Center distance [mm]: | 130 |
| 8 030 46 315 | Radial drilling and milling head ER 32 AX UT IC | |
| | Weight [kg]: | 8.700 |
| | Employment for: | Sub spindle |
| | Tool drive: | Flat (~DIN 1809) |
| | Shank size [mm]: | 40.00 |
| | Shank type: | VDI |
| | Tool adaption: | ER 32 A - u-tec |
| | Gear ratio [i]: | 1:1 |
| | Torque max [Nm]: | 50 |
| | Rotation max [1/min]: | 6000 |
| | Rotating direction: | opposite |
| | Coolant: | IC/Ext |
| | Pressure max [bar]: | 140 |
| | Center distance [mm]: | 130 |
| 8 030 46 375 | Radial drilling and milling head ER 32 AX UT IC | |
| | Weight [kg]: | 9.380 |
| | Employment for: | Main spindle |
| | Tool drive: | Flat (~DIN 1809) |
| | Shank size [mm]: | 40.00 |
| | Shank type: | VDI |
| | Tool adaption: | ER 32 A - u-tec |
| | Gear ratio [i]: | 1:1 |
| | Torque max [Nm]: | 50 |
| | Rotation max [1/min]: | 6000 |
| | Rotating direction: | opposite |
| | Coolant: | IC/Ext |
| | Pressure max [bar]: | 140 |
| | Please note: | Combi bearing |

QT Nexus 200 M/MS/MY/MSY - 12 Stationen

| Part-# | Name | |
|---------------------|---|------------------------|
| | Center distance [mm]: | 130 |
| 8 030 46 388 | Radial drilling and milling head HT 4 | |
| | Employment for: | Main spindle |
| | Tool drive: | Flat (~DIN 1809) |
| | Shank size [mm]: | 40.00 |
| | Shank type: | VDI |
| | Tool adaption: | HT 4 |
| | Gear ratio [i]: | 1:1 |
| | Torque max [Nm]: | 50 |
| | Rotation max [1/min]: | 6000 |
| | Rotating direction: | opposite |
| | Coolant: | EXT |
| | Center distance [mm]: | 130 |
| 8 030 46 401 | Radial drilling and milling head HT 4 IC | |
| | Employment for: | Main spindle |
| | Tool drive: | Flat (~DIN 1809) |
| | Shank size [mm]: | 40.00 |
| | Shank type: | VDI |
| | Tool adaption: | HT 4 |
| | Gear ratio [i]: | 1:1 |
| | Torque max [Nm]: | 50 |
| | Rotation max [1/min]: | 6000 |
| | Rotating direction: | opposite |
| | Coolant: | IC/Ext |
| | Pressure max [bar]: | 140 |
| | Center distance [mm]: | 130 |
| 8 030 46 472 | Radial drilling and milling head ER 32 AX UT | |
| | Weight [kg]: | 8.370 |
| | Employment for: | Main spindle |
| | Tool drive: | Flat (~DIN 1809) |
| | Shank size [mm]: | 40.00 |
| | Shank type: | VDI |
| | Tool adaption: | ER 32 A - u-tec |
| | Gear ratio [i]: | 2:1 |
| | Torque max [Nm]: | 63 |
| | Rotation max [1/min]: | 4000 |
| | Rotating direction: | opposite |
| | Coolant: | EXT |
| | Center distance [mm]: | 130 |
| 8 030 47 004 | Radial drilling and milling head Weldon 25 | |
| | Weight [kg]: | 9.500 |
| | Employment for: | Main spindle |
| | Tool drive: | Flat (~DIN 1809) |
| | Shank size [mm]: | 40.00 |
| | Shank type: | VDI |
| | Tool adaption: | Weldon (DIN 1835 b) 25 |
| | Gear ratio [i]: | 1:1 |
| | Torque max [Nm]: | 50 |
| | Rotation max [1/min]: | 6000 |
| | Rotating direction: | opposite |
| | Coolant: | EXT |
| | Please note: | stronger bearing |
| | Center distance [mm]: | 130 |

QT Nexus 200 M/MS/MY/MSY - 12 Stationen

| Part-# | Name | |
|---------------------|---|------------------|
| 8 030 47 017 | Radial drilling and milling head HT 5 | |
| | Weight [kg]: | 8.440 |
| | Employment for: | Main spindle |
| | Tool drive: | Flat (~DIN 1809) |
| | Shank size [mm]: | 40.00 |
| | Shank type: | VDI |
| | Tool adaption: | HT 5 |
| | Gear ratio [i]: | 1:1 |
| | Torque max [Nm]: | 50 |
| | Rotation max [1/min]: | 6000 |
| | Rotating direction: | opposite |
| | Coolant: | EXT |
| | Center distance [mm]: | 130 |
| 8 030 47 023 | Radial drilling and milling head HT 5 IC | |
| | Weight [kg]: | 8.990 |
| | Employment for: | Main spindle |
| | Tool drive: | Flat (~DIN 1809) |
| | Shank size [mm]: | 40.00 |
| | Shank type: | VDI |
| | Tool adaption: | HT 5 |
| | Gear ratio [i]: | 1:1 |
| | Torque max [Nm]: | 50 |
| | Rotation max [1/min]: | 6000 |
| | Rotating direction: | opposite |
| | Coolant: | IC/Ext |
| | Pressure max [bar]: | 140 |
| | Center distance [mm]: | 130 |
| 8 030 48 001 | Radial drilling and milling head HT 6 | |
| | Employment for: | Main spindle |
| | Tool drive: | Flat (~DIN 1809) |
| | Shank size [mm]: | 40.00 |
| | Shank type: | VDI |
| | Tool adaption: | HT 6 |
| | Gear ratio [i]: | 1:1 |
| | Torque max [Nm]: | 50 |
| | Rotation max [1/min]: | 6000 |
| | Rotating direction: | opposite |
| | Coolant: | EXT |
| | Please note: | stronger bearing |
| | Center distance [mm]: | 130 |
| 8 030 48 002 | Radial drilling and milling head HT 6 IC | |
| | Employment for: | Main spindle |
| | Tool drive: | Flat (~DIN 1809) |
| | Shank size [mm]: | 40.00 |
| | Shank type: | VDI |
| | Tool adaption: | HT 6 |
| | Gear ratio [i]: | 1:1 |
| | Torque max [Nm]: | 50 |
| | Rotation max [1/min]: | 6000 |
| | Rotating direction: | opposite |
| | Coolant: | IC/Ext |
| | Pressure max [bar]: | 25 |
| | Please note: | stronger bearing |
| | Center distance [mm]: | 130 |

QT Nexus 200 M/MS/MY/MSY - 12 Stationen

| Part-# | Name | |
|---------------------|---|------------------------|
| 8 030 48 013 | Radial drilling and milling head Weldon 32 | |
| | Tool drive: | Flat (~DIN 1809) |
| | Shank size [mm]: | 40.00 |
| | Shank type: | VDI |
| | Tool adaption: | Weldon (DIN 1835 b) 32 |
| | Gear ratio [i]: | 2:1 |
| | Torque max [Nm]: | 63 |
| | Rotation max [1/min]: | 4000 |
| | Rotating direction: | opposite |
| | Coolant: | EXT |
| | Please note: | stronger bearing |
| 8 031 44 016 | Radial milling head universal arbor 16 | |
| | Employment for: | Main spindle |
| | Tool drive: | Flat (~DIN 1809) |
| | Shank size [mm]: | 40.00 |
| | Shank type: | VDI |
| | Tool adaption: | Universal arbor 16 |
| | Gear ratio [i]: | 1:1 |
| | Torque max [Nm]: | 50 |
| | Rotation max [1/min]: | 6000 |
| | Rotating direction: | opposite |
| | Coolant: | EXT |
| | Center distance [mm]: | 130 |
| 8 031 44 017 | Radial milling head universal arbor 16 | |
| | Tool drive: | Flat (~DIN 1809) |
| | Shank size [mm]: | 40.00 |
| | Shank type: | VDI |
| | Tool adaption: | Universal arbor 16 |
| | Gear ratio [i]: | 2:1 |
| | Torque max [Nm]: | 63 |
| | Rotation max [1/min]: | 3000 |
| | Rotating direction: | opposite |
| | Coolant: | EXT |
| | Please note: | stronger bearing |
| | Center distance [mm]: | 130 |
| 8 031 44 023 | Radial milling head universal arbor 16 | |
| | Employment for: | Main spindle |
| | Tool drive: | Flat (~DIN 1809) |
| | Shank size [mm]: | 40.00 |
| | Shank type: | VDI |
| | Tool adaption: | Universal arbor 16 |
| | Gear ratio [i]: | 1:1 |
| | Torque max [Nm]: | 50 |
| | Rotation max [1/min]: | 6000 |
| | Rotating direction: | opposite |
| | Coolant: | EXT |
| | Please note: | stronger bearing |
| | Center distance [mm]: | 130 |

QT Nexus 200 M/MS/MY/MSY - 12 Stationen

| Part-# | Name | |
|---------------------|---|--------------------|
| 8 031 45 006 | Radial milling head universal arbor 22 | |
| | Employment for: | Main spindle |
| | Tool drive: | Flat (~DIN 1809) |
| | Shank size [mm]: | 40.00 |
| | Shank type: | VDI |
| | Tool adaption: | Universal arbor 22 |
| | Gear ratio [i]: | 1:1 |
| | Torque max [Nm]: | 50 |
| | Rotation max [1/min]: | 6000 |
| | Rotating direction: | opposite |
| | Coolant: | EXT |
| | Center distance [mm]: | 130 |
| 8 031 45 010 | Radial milling head universal arbor 22 | |
| | Employment for: | Main spindle |
| | Tool drive: | Flat (~DIN 1809) |
| | Shank size [mm]: | 40.00 |
| | Shank type: | VDI |
| | Tool adaption: | Universal arbor 22 |
| | Gear ratio [i]: | 2:1 |
| | Torque max [Nm]: | 63 |
| | Rotation max [1/min]: | 4000 |
| | Rotating direction: | opposite |
| | Coolant: | EXT |
| | Center distance [mm]: | 130 |
| 8 031 45 022 | Radial milling head universal arbor 22 | |
| | Weight [kg]: | 9.180 |
| | Employment for: | Main spindle |
| | Tool drive: | Flat (~DIN 1809) |
| | Shank size [mm]: | 40.00 |
| | Shank type: | VDI |
| | Tool adaption: | Universal arbor 22 |
| | Gear ratio [i]: | 2:1 |
| | Torque max [Nm]: | 63 |
| | Rotation max [1/min]: | 4000 |
| | Rotating direction: | opposite |
| | Coolant: | EXT |
| | Please note: | stronger bearing |
| | Center distance [mm]: | 130 |
| 8 031 45 023 | Radial milling head universal arbor 22 | |
| | Tool drive: | Flat (~DIN 1809) |
| | Shank size [mm]: | 40.00 |
| | Shank type: | VDI |
| | Tool adaption: | Universal arbor 22 |
| | Gear ratio [i]: | 1:1 |
| | Torque max [Nm]: | 50 |
| | Rotation max [1/min]: | 6000 |
| | Rotating direction: | opposite |
| | Coolant: | EXT |
| | Please note: | stronger bearing |
| | Center distance [mm]: | 130 |

QT Nexus 200 M/MS/MY/MSY - 12 Stationen

| Part-# | Name | |
|---------------------|--|------------------|
| 8 031 45 035 | Radial polygon head arbor 22 | |
| | Weight [kg]: | 9.130 |
| | Employment for: | Main spindle |
| | Tool drive: | Flat (~DIN 1809) |
| | Shank size [mm]: | 40.00 |
| | Shank type: | VDI |
| | Tool adaption: | Arbor 22 |
| | Gear ratio [i]: | 2:1 |
| | Torque max [Nm]: | 63 |
| | Rotation max [1/min]: | 4000 |
| | Rotating direction: | opposite |
| | Coolant: | EXT |
| | Please note: | stronger bearing |
| | Center distance [mm]: | 130 |
| 8 031 45 038 | Radial polygon head arbor 22 | |
| | Employment for: | Main spindle |
| | Tool drive: | Flat (~DIN 1809) |
| | Shank size [mm]: | 40.00 |
| | Shank type: | VDI |
| | Tool adaption: | Polygon arbor 22 |
| | Gear ratio [i]: | 1:1 |
| | Torque max [Nm]: | 50 |
| | Rotation max [1/min]: | 6000 |
| | Rotating direction: | opposite |
| | Coolant: | EXT |
| | Please note: | stronger bearing |
| | Center distance [mm]: | 130 |
| 8 033 46 055 | Radial drilling and milling head ER 32 AX UT | |
| | Weight [kg]: | 10.620 |
| | Notation: | offset |
| | Employment for: | Sub spindle |
| | Tool drive: | Flat (~DIN 1809) |
| | Shank size [mm]: | 40.00 |
| | Shank type: | VDI |
| | Tool adaption: | ER 32 A - u-tec |
| | Gear ratio [i]: | 1:1 |
| | Torque max [Nm]: | 50 |
| | Rotation max [1/min]: | 6000 |
| | Rotating direction: | same |
| | Coolant: | EXT |
| | Center distance [mm]: | 130 |
| 8 033 46 120 | Radial drilling and milling head ER 32 AX UT IC | |
| | Weight [kg]: | 10.700 |
| | Notation: | offset |
| | Employment for: | Sub spindle |
| | Tool drive: | Flat (~DIN 1809) |
| | Shank size [mm]: | 40.00 |
| | Shank type: | VDI |
| | Tool adaption: | ER 32 A - u-tec |
| | Gear ratio [i]: | 1:1 |
| | Torque max [Nm]: | 50 |
| | Rotation max [1/min]: | 6000 |
| | Rotating direction: | same |
| | Coolant: | IC/Ext |
| | Pressure max [bar]: | 140 |

QT Nexus 200 M/MS/MY/MSY - 12 Stationen

| Part-# | Name | |
|---------------------|---|-----------------------|
| | Center distance [mm]: | 130 |
| 8 037 45 006 | Woodruff keycutter ER 25 AX | |
| | Weight [kg]: | 8.660 |
| | Tool drive: | Flat (~DIN 1809) |
| | Shank size [mm]: | 40.00 |
| | Shank type: | VDI |
| | Tool adaption: | ER 25 A |
| | Gear ratio [i]: | 1333:1 |
| | Torque max [Nm]: | 32 |
| | Rotation max [1/min]: | 4000 |
| | Rotating direction: | opposite |
| | Coolant: | EXT |
| 8 039 45 019 | Radial drilling and milling head ER 25 AX UT | |
| | Weight [kg]: | 9.040 |
| | Employment for: | Main- and sub spindle |
| | Version: | double spindle |
| | Tool drive: | Flat (~DIN 1809) |
| | Shank size [mm]: | 40.00 |
| | Shank type: | VDI |
| | Tool adaption: | ER 25 A - u-tec |
| | Gear ratio [i]: | 1:1 |
| | Torque max [Nm]: | 50 |
| | Rotation max [1/min]: | 6000 |
| | Rotating direction: | same/opposite |
| | Coolant: | EXT |
| | Center distance [mm]: | 130 |
| 8 039 45 024 | Radial drilling and milling head ER 25 | |
| | Weight [kg]: | 8.280 |
| | Version: | 20° angle |
| | Tool drive: | Flat (~DIN 1809) |
| | Shank size [mm]: | 40.00 |
| | Shank type: | VDI |
| | Tool adaption: | ER 25 |
| | Gear ratio [i]: | 1:1 |
| | Torque max [Nm]: | 50 |
| | Rotation max [1/min]: | 6000 |
| | Rotating direction: | opposite |
| | Coolant: | EXT |
| 8 039 46 042 | Radial drilling and milling head ER 32 AX UT | |
| | Weight [kg]: | 9.220 |
| | Employment for: | Main- and sub spindle |
| | Version: | double spindle |
| | Tool drive: | Flat (~DIN 1809) |
| | Shank size [mm]: | 40.00 |
| | Shank type: | VDI |
| | Tool adaption: | ER 32 A - u-tec |
| | Gear ratio [i]: | 1:1 |
| | Torque max [Nm]: | 50 |
| | Rotation max [1/min]: | 6000 |
| | Rotating direction: | same/opposite |
| | Coolant: | EXT |
| | Center distance [mm]: | 130 |

QT Nexus 200 M/MS/MY/MSY - 12 Stationen

| Part-# | Name | |
|---------------------|--|------------------------|
| 8 039 46 046 | Radial drilling and milling head ER 32 AX UT | |
| | Weight [kg]: | 11.580 |
| | Notation: | offset |
| | Employment for: | Main- and sub spindle |
| | Version: | double spindle |
| | Tool drive: | Flat (~DIN 1809) |
| | Shank size [mm]: | 40.00 |
| | Shank type: | VDI |
| | Tool adaption: | ER 32 A - u-tec |
| | Gear ratio [i]: | 1:1 |
| | Torque max [Nm]: | 50 |
| | Rotation max [1/min]: | 6000 |
| | Rotating direction: | same/opposite |
| | Coolant: | EXT |
| | Center distance [mm]: | 130 |
| | Offset [mm]: | 50 |
| 8 039 46 060 | Radial drilling and milling head ER 32 AX UT IC | |
| | Weight [kg]: | 10.690 |
| | Version: | 360° turnable; special |
| | Tool drive: | Flat (~DIN 1809) |
| | Shank size [mm]: | 40.00 |
| | Shank type: | VDI |
| | Tool adaption: | ER 32 A - u-tec |
| | Gear ratio [i]: | 1:1 |
| | Torque max [Nm]: | 50 |
| | Rotation max [1/min]: | 6000 |
| | Rotating direction: | opposite |
| | Coolant: | IC/Ext |
| | Pressure max [bar]: | 140 |
| | Center distance [mm]: | 130 |
| 8 039 46 090 | Radial drilling and milling head ER 32 AX UT IC | |
| | Notation: | offset |
| | Employment for: | Main- and sub spindle |
| | Version: | double spindle |
| | Tool drive: | Flat (~DIN 1809) |
| | Shank size [mm]: | 40.00 |
| | Shank type: | VDI |
| | Tool adaption: | ER 32 A - u-tec |
| | Gear ratio [i]: | 1:1 |
| | Torque max [Nm]: | 50 |
| | Rotation max [1/min]: | 6000 |
| | Rotating direction: | same/opposite |
| | Coolant: | IC/Ext |
| | Pressure max [bar]: | 25 |
| | Center distance [mm]: | 130 |
| | Offset [mm]: | 50 |
| 8 040 44 042 | Universal head ± 90° adjustable ER 16 AX UT IC | |
| | Weight [kg]: | 5.260 |
| | Tool drive: | Flat (~DIN 1809) |
| | Shank size [mm]: | 40.00 |
| | Shank type: | VDI |
| | Tool adaption: | ER 16 A - u-tec |
| | Gear ratio [i]: | 1:2 |
| | Torque max [Nm]: | 12 |
| | Rotation max [1/min]: | 12000 |

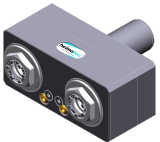
QT Nexus 200 M/MS/MY/MSY - 12 Stationen

| Part-# | Name | |
|---------------------|---|-------------------|
| | Rotating direction: | opposite |
| | Coolant: | IC/Ext |
| | Pressure max [bar]: | 140 |
| | Center distance [mm]: | 87 |
| 8 040 44 043 | Universal head ± 90° adjustable ER 16 AX UT | |
| | Tool drive: | Flat (~DIN 1809) |
| | Shank size [mm]: | 40.00 |
| | Shank type: | VDI |
| | Tool adaption: | ER 16 A - u-tec |
| | Gear ratio [i]: | 1:2 |
| | Torque max [Nm]: | 12 |
| | Rotation max [1/min]: | 12000 |
| | Rotating direction: | opposite |
| | Coolant: | EXT |
| | Center distance [mm]: | 87 |
| 8 040 44 044 | Universal head ± 90° adjustable ER 16 AX UT | |
| | Tool drive: | Flat (~DIN 1809) |
| | Shank size [mm]: | 40.00 |
| | Shank type: | VDI |
| | Tool adaption: | ER 16 A - u-tec |
| | Gear ratio [i]: | 1:1 |
| | Torque max [Nm]: | 25 |
| | Rotation max [1/min]: | 6000 |
| | Rotating direction: | opposite |
| | Coolant: | EXT |
| | Please note: | Note swivel range |
| | Center distance [mm]: | 125 |
| 8 040 44 045 | Universal head ± 90° adjustable ER 16 AX UT | |
| | Weight [kg]: | 5.220 |
| | Tool drive: | Flat (~DIN 1809) |
| | Shank size [mm]: | 40.00 |
| | Shank type: | VDI |
| | Tool adaption: | ER 16 A - u-tec |
| | Gear ratio [i]: | 1:1 |
| | Torque max [Nm]: | 25 |
| | Rotation max [1/min]: | 6000 |
| | Rotating direction: | opposite |
| | Coolant: | EXT |
| | Please note: | Note swivel range |
| | Center distance [mm]: | 87 |
| 8 040 44 048 | Universal head ± 90° adjustable ER 16 AX UT IC | |
| | Tool drive: | Flat (~DIN 1809) |
| | Shank size [mm]: | 40.00 |
| | Shank type: | VDI |
| | Tool adaption: | ER 16 A - u-tec |
| | Gear ratio [i]: | 1:1 |
| | Torque max [Nm]: | 25 |
| | Rotation max [1/min]: | 6000 |
| | Rotating direction: | opposite |
| | Coolant: | IC/Ext |
| | Pressure max [bar]: | 140 |
| | Center distance [mm]: | 87 |

QT Nexus 200 M/MS/MY/MSY - 12 Stationen

| Part-# | Name | |
|---------------------|---|--------------------|
| 8 040 44 093 | Universal head $\pm 90^\circ$ adjustable ER 16 AX UT | |
| | Tool drive: | Flat (~DIN 1809) |
| | Shank size [mm]: | 40.00 |
| | Shank type: | VDI |
| | Tool adaption: | ER 16 A - u-tec |
| | Gear ratio [i]: | 1:2 |
| | Torque max [Nm]: | 12 |
| | Rotation max [1/min]: | 12000 |
| | Rotating direction: | opposite |
| | Coolant: | EXT |
| | Please note: | Note swivel range |
| | Center distance [mm]: | 125 |
| 8 040 44 094 | Universal head $\pm 90^\circ$ adjustable ER 16 AX UT IC | |
| | Tool drive: | Flat (~DIN 1809) |
| | Shank size [mm]: | 40.00 |
| | Shank type: | VDI |
| | Tool adaption: | ER 16 A - u-tec |
| | Gear ratio [i]: | 1:2 |
| | Torque max [Nm]: | 12 |
| | Rotation max [1/min]: | 12000 |
| | Rotating direction: | opposite |
| | Coolant: | IC/Ext |
| | Pressure max [bar]: | 140 |
| | Please note: | Note swivel range |
| | Center distance [mm]: | 125 |
| 8 040 45 056 | Universal head $\pm 90^\circ$ adjustable ER 25 AX UT | |
| | Weight [kg]: | 5.500 |
| | Tool drive: | Flat (~DIN 1809) |
| | Shank size [mm]: | 40.00 |
| | Shank type: | VDI |
| | Tool adaption: | ER 25 A - u-tec |
| | Gear ratio [i]: | 1:1 |
| | Torque max [Nm]: | 25 |
| | Rotation max [1/min]: | 6000 |
| | Rotating direction: | opposite |
| | Coolant: | EXT |
| | Please note: | Note swivel range! |
| | Center distance [mm]: | 87 |
| 8 040 45 057 | Universal head $\pm 90^\circ$ adjustable ER 25 AX UT | |
| | Tool drive: | Flat (~DIN 1809) |
| | Shank size [mm]: | 40.00 |
| | Shank type: | VDI |
| | Tool adaption: | ER 25 A - u-tec |
| | Gear ratio [i]: | 1:1 |
| | Torque max [Nm]: | 25 |
| | Rotation max [1/min]: | 6000 |
| | Rotating direction: | opposite |
| | Coolant: | EXT |
| | Please note: | Note swivel range! |
| | Center distance [mm]: | 125 |

QT Nexus 200 M/MS/MY/MSY - 12 Stationen

| Part-# | Name | |
|---|---|--|
| 8 040 45 066 | Universal head ± 90° adjustable ER 25 AX UT IC | |
| | Weight [kg]: | 5.530 |
| | Tool drive: | Flat (~DIN 1809) |
| | Shank size [mm]: | 40.00 |
| | Shank type: | VDI |
| | Tool adaption: | ER 25 A - u-tec |
| | Gear ratio [i]: | 1:1 |
| | Torque max [Nm]: | 25 |
| | Rotation max [1/min]: | 6000 |
| | Rotating direction: | opposite |
| | Coolant: | IC/Ext |
| | Pressure max [bar]: | 140 |
| | Please note: | Note swivel range! |
| | Center distance [mm]: | 87 |
| 8 040 45 106 | Universal head ± 90° adjustable ER 25 AX UT IC | |
| | Tool drive: | Flat (~DIN 1809) |
| | Shank size [mm]: | 40.00 |
| | Shank type: | VDI |
| | Tool adaption: | ER 25 A - u-tec |
| | Gear ratio [i]: | 1:1 |
| | Torque max [Nm]: | 25 |
| | Rotation max [1/min]: | 6000 |
| | Rotating direction: | opposite |
| | Coolant: | IC/Ext |
| | Pressure max [bar]: | 140 |
| | Please note: | Note swivel range! |
| | Center distance [mm]: | 125 |
| 8 050 45 026 | Multispindle drilling head ER 25 AX UT | |
|  | Employment for: | Main- and sub spindle |
| | Tool drive: | Flat (~DIN 1809) |
| | Shank size [mm]: | 40.00 |
| | Shank type: | VDI |
| | Tool adaption: | ER 25 A - u-tec |
| | Gear ratio [i]: | 1:1 |
| | Torque max [Nm]: | 50/Sp. |
| | Rotation max [1/min]: | 6000 |
| | Rotating direction: | opposite |
| | Coolant: | EXT |
| | Please note: | stronger bearing |
| | Offset [mm]: | 50 |
| 8 050 45 030 | Multispindle drilling head ER 25 AX UT IC | |
| | Weight [kg]: | 6.730 |
| | Notation: | offset |
| | Version: | 2-spindles |
| | Tool drive: | Flat (~DIN 1809) |
| | Shank size [mm]: | 40.00 |
| | Shank type: | VDI |
| | Tool adaption: | ER 25 A - u-tec |
| | Gear ratio [i]: | 1:1 |
| | Torque max [Nm]: | 50 |
| | Rotation max [1/min]: | 6000 |
| | Rotating direction: | opposite |
| | Coolant: | IC/Ext |
| | Pressure max [bar]: | 140 |
| | Please note: | stronger bearing; not on benachbarten stations |

QT Nexus 200 M/MS/MY/MSY - 12 Stationen

| Part-# | Name | |
|---------------------|---|-----------------------------|
| | Offset [mm]: | 41,255 |
| 8 200 40 004 | Tool blank | |
| | Shank size [mm]: | 40.00 |
| | Shank type: | VDI |
| 8 200 41 000 | Plug Ø 40x60 | |
| | Weight [kg]: | 1.140 |
| | Shank size [mm]: | 40.00 |
| | Shank type: | VDI |
| 8 202 40 003 | Basic holder for height adjustable adapter | |
| | Weight [kg]: | 3.340 |
| | Shank size [mm]: | 40.00 |
| | Shank type: | VDI |
| | Coolant: | EXT |
| 8 202 40 006 | Basic holder longitudinal seat FN 12 | |
| | Weight [kg]: | 3.300 |
| | Shank size [mm]: | 40.00 |
| | Shank type: | VDI |
| | Tool adaption: | Interface FN 12 |
| | Coolant: | EXT |
| 8 214 43 004 | Cut-off holder SH 32 | |
| | Weight [kg]: | 3.480 |
| | Version: | Edge on center of turret |
| | Shank size [mm]: | 40.00 |
| | Shank type: | VDI |
| | Tool adaption: | Clampshaft SH 32 |
| | Coolant: | EXT |
| 8 214 43 015 | Cut-off holder SH 32 | |
| | Weight [kg]: | 3.360 |
| | Employment for: | Cut-off tool 32 |
| | Version: | Clampshaft on turret center |
| | Shank size [mm]: | 40.00 |
| | Shank type: | VDI |
| | Tool adaption: | Clampshaft SH 32 |
| | Coolant: | EXT |
| | Please note: | demountalbe clampshaft |
| 8 214 43 016 | Cut-off holder SH 32 | |
| | Weight [kg]: | 3.370 |
| | Employment for: | Cut-off tool 32 |
| | Version: | Clampshaft on turret side |
| | Shank size [mm]: | 40.00 |
| | Shank type: | VDI |
| | Tool adaption: | Clampshaft SH 32 |
| | Coolant: | EXT |
| | Please note: | demountalbe clampshaft |

QT Nexus 200 M/MS/MY/MSY - 12 Stationen

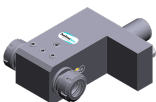
| Part-# | Name | |
|---------------------|---|----------------------|
| 8 214 45 000 | Universal turning holder sq. 25 | |
| | Weight [kg]: | 6.360 |
| | Shank size [mm]: | 40.00 |
| | Shank type: | VDI |
| | Tool adaption: | Sq. 25 |
| | Coolant: | EXT |
| 8 214 45 001 | Universal turning holder sq. 25 | |
| | Weight [kg]: | 6.320 |
| | Employment for: | Sub spindle |
| | Shank size [mm]: | 40.00 |
| | Shank type: | VDI |
| | Tool adaption: | Sq. 25 |
| | Coolant: | EXT |
| 8 214 45 003 | Universal turning holder sq. 1" | |
| | Weight [kg]: | 6.380 |
| | Shank size [mm]: | 40.00 |
| | Shank type: | VDI |
| | Tool adaption: | Sq. 1" (25,4mm) |
| | Coolant: | EXT |
| 8 214 45 016 | Universal turning holder sq. 25 IC | |
| | Weight [kg]: | 6.420 |
| | Shank size [mm]: | 40.00 |
| | Shank type: | VDI |
| | Tool adaption: | Sq. 25 |
| | Coolant: | IC/Ext |
| 8 230 44 000 | Tool holder HSK - A50 | |
| | Weight [kg]: | 10.320 |
| | Shank size [mm]: | 40.00 |
| | Shank type: | VDI |
| | Tool adaption: | DIN 69893 A - HSK 50 |
| | Coolant: | IC/Ext |
| | Center distance [mm]: | 140 |
| 8 230 46 026 | Collet chuck holder ER 32 | |
| | Weight [kg]: | 9.240 |
| | Employment for: | Main spindle |
| | Shank size [mm]: | 40.00 |
| | Shank type: | VDI |
| | Tool adaption: | ER 32 |
| | Coolant: | IC/Ext |
| | Center distance [mm]: | 140 |
| 8 230 47 005 | Boring bar holder special version Ø 30 | |
| | Weight [kg]: | 9.450 |
| | Version: | Special |
| | Shank type: | VDI |
| | Tool adaption: | Ø 30 |
| | Coolant: | EXT |
| | Center distance [mm]: | 125 |

QT Nexus 200 M/MS/MY/MSY - 12 Stationen

| Part-# | Name | |
|---------------------|-----------------------------------|----------------------------------|
| 8 230 47 006 | Boring bar holder Ø 25 | |
| | Weight [kg]: | 9.580 |
| | Shank size [mm]: | 40.00 |
| | Shank type: | VDI |
| | Tool adaption: | Ø 25 |
| | Coolant: | IC/Ext |
| | Center distance [mm]: | 140 |
| 8 230 47 015 | Tool holder HT 5 | |
| | Weight [kg]: | 9.280 |
| | Employment for: | Main spindle |
| | Shank size [mm]: | 40.00 |
| | Shank type: | VDI |
| | Tool adaption: | HT 5 |
| | Coolant: | IC/Ext |
| | Center distance [mm]: | 140 |
| 8 230 48 007 | Boring bar holder Ø 32 | |
| | Weight [kg]: | 9.360 |
| | Shank size [mm]: | 40.00 |
| | Shank type: | VDI |
| | Tool adaption: | Ø 32 |
| | Coolant: | IC/Ext |
| | Please note: | Offset dimension to center 71 mm |
| | Center distance [mm]: | 140 |
| 8 230 48 025 | Boring bar holder Ø 1 1/2" | |
| | Weight [kg]: | 9.100 |
| | Shank size [mm]: | 40.00 |
| | Shank type: | VDI |
| | Tool adaption: | Ø 1 1/2" (38,1mm) |
| | Coolant: | IC/Ext |
| | Center distance [mm]: | 140 |
| 8 230 49 001 | Boring bar holder Ø 40 | |
| | Weight [kg]: | 9.160 |
| | Shank size [mm]: | 40.00 |
| | Shank type: | VDI |
| | Tool adaption: | Ø 40 |
| | Coolant: | IC/Ext |
| | Center distance [mm]: | 140 |
| 8 230 49 006 | Boring bar holder Ø 40 | |
| | Weight [kg]: | 9.080 |
| | Notation: | offset |
| | Employment for: | Sub spindle |
| | Version: | Special |
| | Shank size [mm]: | 40.00 |
| | Shank type: | VDI |
| | Tool adaption: | Ø 40 |
| | Coolant: | IC/Ext |
| | Center distance [mm]: | 140 |

QT Nexus 200 M/MS/MY/MSY - 12 Stationen

| Part-# | Name | |
|---------------------|--|--|
| 8 230 49 027 | Boring bar holder Ø 50 | |
| | Version: | Special |
| | Shank size [mm]: | 40.00 |
| | Shank type: | VDI |
| | Tool adaption: | Ø 50 |
| | Coolant: | IC/Ext |
| | Please note: | Official tool length is exceeded |
| | Center distance [mm]: | 140 |
| 8 230 49 054 | Boring bar holder Ø 40 | |
| | Weight [kg]: | 9.860 |
| | Notation: | offset |
| | Shank size [mm]: | 40.00 |
| | Shank type: | VDI |
| | Tool adaption: | Ø 40 |
| | Coolant: | IC/Ext |
| | Please note: | Offset dimension to center 9 mm |
| | Center distance [mm]: | 140 |
| 8 234 45 002 | Combi facing holder sq. 25 | |
| | Weight [kg]: | 10.780 |
| | Employment for: | Main- and sub spindle |
| | Shank size [mm]: | 40.00 |
| | Shank type: | VDI |
| | Tool adaption: | Sq. 25 |
| | Coolant: | EXT |
| 8 234 45 006 | Combi facing holder sq. 25 | |
| | Version: | Special |
| | Shank size [mm]: | 40.00 |
| | Shank type: | VDI |
| | Tool adaption: | Sq. 25 |
| | Coolant: | EXT |
| | Please note: | Machine: Mazak, QT Nexus 200 II M - 12 |
| 8 239 44 000 | Double collet chuck holder ER 20 M | |
| | Weight [kg]: | 9.640 |
| | Employment for: | Main spindle |
| | Shank size [mm]: | 40.00 |
| | Shank type: | VDI |
| | Tool adaption: | ER 20 M |
| | Coolant: | IC/Ext |
| | Center distance [mm]: | 126/155 |
| 8 239 46 003 | Double collet chuck holder ER 32 IC | |
| | Weight [kg]: | 10.200 |
| | Employment for: | Main- and sub spindle |
| | Shank size [mm]: | 40.00 |
| | Shank type: | VDI |
| | Tool adaption: | ER 32 |
| | Coolant: | IC/Ext |
| | Center distance [mm]: | 140 |




QT Nexus 200 M/MS/MY/MSY - 12 Stationen

| Part-# | Name | |
|---------------------|---|-----------------------|
| 8 239 46 026 | Double boring bar holder Ø 20 IC/Ext | |
| | Weight [kg]: | 11.380 |
| | Employment for: | Main- and sub spindle |
| | Shank size [mm]: | 40.00 |
| | Shank type: | VDI |
| | Tool adaption: | Ø 20 |
| | Coolant: | IC/Ext |
| | Center distance [mm]: | 140 |
| 8 239 47 000 | Double boring bar holder Ø 25 | |
| | Weight [kg]: | 10.920 |
| | Employment for: | Main- and sub spindle |
| | Shank size [mm]: | 40.00 |
| | Shank type: | VDI |
| | Tool adaption: | Ø 25 |
| | Coolant: | EXT |
| | Center distance [mm]: | 140 |
| 8 239 47 001 | Double boring bar holder Ø 25 IC/Ext | |
| | Weight [kg]: | 10.800 |
| | Employment for: | Main- and sub spindle |
| | Shank size [mm]: | 40.00 |
| | Shank type: | VDI |
| | Tool adaption: | Ø 25 |
| | Coolant: | IC/Ext |
| | Center distance [mm]: | 140 |
| 8 239 47 002 | Double tool holder HT 5 | |
| | Weight [kg]: | 9.440 |
| | Employment for: | Main- and sub spindle |
| | Shank size [mm]: | 40.00 |
| | Shank type: | VDI |
| | Tool adaption: | HT 5 |
| | Coolant: | IC/Ext |
| | Center distance [mm]: | 140 |
| 8 239 47 024 | Double boring bar holder Ø 1" | |
| | Weight [kg]: | 10.770 |
| | Employment for: | Main- and sub spindle |
| | Shank size [mm]: | 40.00 |
| | Shank type: | VDI |
| | Tool adaption: | Ø 1" (25,4mm) |
| | Coolant: | EXT |
| | Center distance [mm]: | 140 |
| 8 239 48 002 | Double boring bar holder Ø 32 | |
| | Weight [kg]: | 11.060 |
| | Employment for: | Main- and sub spindle |
| | Shank size [mm]: | 40.00 |
| | Shank type: | VDI |
| | Tool adaption: | Ø 32 |
| | Coolant: | EXT |
| | Center distance [mm]: | 140 |

QT Nexus 200 M/MS/MY/MSY - 12 Stationen

| Part-# | Name | |
|---------------------|--|-----------------------|
| 8 239 48 017 | Double boring bar holder Ø 32 IC/Ext | |
| | Weight [kg]: | 11.050 |
| | Employment for: | Main- and sub spindle |
| | Shank size [mm]: | 40.00 |
| | Shank type: | VDI |
| | Tool adaption: | Ø 32 |
| | Coolant: | IC/Ext |
| | Center distance [mm]: | 140 |
| 8 239 49 000 | Double boring bar holder Ø 40 | |
| | Weight [kg]: | 9.160 |
| | Employment for: | Main- and sub spindle |
| | Shank size [mm]: | 40.00 |
| | Shank type: | VDI |
| | Tool adaption: | Ø 40 |
| | Coolant: | EXT |
| | Center distance [mm]: | 140 |
| 8 239 49 018 | Double boring bar holder Ø 40 IC/Ext | |
| | Weight [kg]: | 10.650 |
| | Employment for: | Main- and sub spindle |
| | Shank size [mm]: | 40.00 |
| | Shank type: | VDI |
| | Tool adaption: | Ø 40 |
| | Coolant: | IC/Ext |
| | Center distance [mm]: | 140 |
| 8 251 45 000 | Combi double turning holder sq. 25 | |
| | Weight [kg]: | 10.400 |
| | Shank size [mm]: | 40.00 |
| | Shank type: | VDI |
| | Tool adaption: | Sq. 25 |
| | Coolant: | EXT |
| 8 251 45 014 | Combi double turning holder sq. 25 IC | |
| | Weight [kg]: | 10.130 |
| | Shank size [mm]: | 40.00 |
| | Shank type: | VDI |
| | Tool adaption: | Sq. 25 |
| | Coolant: | IC/Ext |
| 8 253 47 005 | Double boring bar holder Ø 25 | |
| | Weight [kg]: | 10.700 |
| | Employment for: | Main- and sub spindle |
| | Shank size [mm]: | 40.00 |
| | Shank type: | VDI |
| | Tool adaption: | Ø 25 |
| | Coolant: | EXT |
| | Center distance [mm]: | 105/148 |
| 8 253 47 007 | Double boring bar holder Ø 1" | |
| | Weight [kg]: | 10.700 |
| | Employment for: | Main- and sub spindle |
| | Shank size [mm]: | 40.00 |
| | Shank type: | VDI |
| | Tool adaption: | Ø 1" (25,4mm) |
| | Coolant: | EXT |

QT Nexus 200 M/MS/MY/MSY - 12 Stationen

| Part-# | Name | |
|---|---|-----------------------|
| | Center distance [mm]: | 105/148 |
| 8 259 42 000 | Multiple turning holder sq. 25 | |
| | Weight [kg]: | 7.020 |
| | Employment for: | Main spindle |
| | Version: | Y-axes offset |
| | Shank size [mm]: | 40.00 |
| | Shank type: | VDI |
| | Tool adaption: | Sq. 25 |
| | | Sq. 25 |
| | Coolant: | EXT |
| 8 259 45 001 | Multiple turning holder 4x sq. 25 | |
| | Weight [kg]: | 10.950 |
| | Employment for: | Main- and sub spindle |
| | Version: | Y-axes offset |
| | Shank size [mm]: | 40.00 |
| | Shank type: | VDI |
| | Tool adaption: | Sq. 25 |
| | | Sq. 25 |
| | | Sq. 25 |
| | | Sq. 25 |
| | Coolant: | EXT |
| 8 259 45 005 | Multiple turning holder 4x sq. 1" | |
| | Weight [kg]: | 10.930 |
| | Employment for: | Main- and sub spindle |
| | Version: | Y-axes offset |
| | Shank size [mm]: | 40.00 |
| | Shank type: | VDI |
| | Tool adaption: | Sq. 1" (25,4mm) |
| | | Sq. 1" (25,4mm) |
| | | Sq. 1" (25,4mm) |
| | | Sq. 1" (25,4mm) |
| | Coolant: | EXT |
| 8 259 45 009 | Multiple turning holder 4x sq. 25 IC | |
|  | Weight [kg]: | 10.600 |
| | Employment for: | Main- and sub spindle |
| | Version: | Y-axes offset |
| | Shank size [mm]: | 40.00 |
| | Shank type: | VDI |
| | Tool adaption: | Sq. 25 |
| | | Sq. 25 |
| | | Sq. 25 |
| | | Sq. 25 |
| | Coolant: | IC/Ext |
| 8 320 43 008 | Cut-off holder, height adjustable SH 32 IC | |
| | Weight [kg]: | 3.930 |
| | Shank size [mm]: | 40.00 |
| | Shank type: | VDI |
| | Tool adaption: | Clampshaft SH 32 |
| | Coolant: | IC/Ext |
| | Pressure max [bar]: | 70 |



● heimatec overseas branches

○ global representations of heimatec

heimatec[®]

heimatec GmbH
Präzisionswerkzeuge
Carl-Benz-Str. 4
77871 Renchen
Germany

T +49 7843 9466 0
www.heimatec.com
info@heimatec.com

Please find the contact details of our worldwide trading partners on our website:
<https://heimatec.com/business-partners>