

SPINNER
TC 300



High-tech from heimatec - heimatec - Tools and systems for productive turning and milling

heimatec belongs to the international technology and quality leaders for precision tools and specializes in the development and production of high-precision static and live tools for all CNC lathes, CNC turn-/mill machines and CNC machining centers.

The range of products* spans from static BMT and VDI tool holders, live tools up to highly complex customer-specific individual solutions. heimatec, headquartered in Renchen, has a own subsidiary in Asia and India and numerous representatives as well as trading partners all over the world.

*OUR PRODCUTS

Static tool holders

Live tool units

Precision tools

Tools for turning and machining centres

Tools for swiss type lathes

Tool changing and uick-change systems

Tool systems for gear production

Digital tool management

This catalogue, including all its parts, is protected by copyright. Any use outside the restricted limitations of the Copyright Act without the consent of heimatec is inadmissible and liable to prosecution. This applies in particular to duplication, translation, microfilming and storage and processing in electronic systems.

heimatec GmbH reserves the right to make technical changes at any time without giving prior notice. This applies in particular to adjustments at any time to meet new or changed international standards, or in case of further developments of our products or manufacturing processes.

The current version of our General Terms and Conditions can be found on our website.

SPINNER TC 300

Part-#	Name	
8 200 20 001	Plug Z2-25 K	
	Weight [kg]:	0.020
	Shank size [mm]:	25.00
	Shank type:	VDI
8 200 20 004	Plug Z2-25 S	
	Weight [kg]:	0.480
	Shank size [mm]:	25.00
	Shank type:	VDI
8 200 22 000	Tool holder A1-25x 75	
	Shank size [mm]:	25.00
	Shank type:	VDI
8 202 20 011	Basic holder longitudinal seat FN 12	
	Weight [kg]:	0.800
	Version:	universal
	Shank size [mm]:	25.00
	Shank type:	VDI
	Tool adaption:	Interface FN 12
	Coolant:	EXT
8 209 22 012	Adapter for VDI 25	
	Version:	right
	Shank size [mm]:	25.00
	Shank type:	VDI
	Tool adaption:	DIN 69880 - 25
	Center distance [mm]:	75
8 209 22 014	Adapter for VDI 25	
	Notation:	offset
	Version:	right
	Shank size [mm]:	25.00
	Shank type:	VDI
	Tool adaption:	DIN 69880 - 25
	Center distance [mm]:	75
8 214 21 001	Tool holder C3-25x16	
	Weight [kg]:	1.070
	Shank size [mm]:	25.00
	Shank type:	VDI
	Tool adaption:	Sq. 16/12
	Coolant:	EXT
8 214 21 003	Tool holder C1-25x16/12	
	Shank size [mm]:	25.00
	Shank type:	VDI
	Tool adaption:	Sq. 16/12
	Coolant:	EXT
8 214 24 001	Universal turning holder sq. 20	
	Weight [kg]:	1.460
	Shank size [mm]:	25.00
	Shank type:	VDI
	Tool adaption:	Sq. 20
		Sq. 20
	Coolant:	EXT

SPINNER TC 300

Part-#	Name
--------	------

Please note: with reversible shaft

8 230 25 008 Collet chuck holder ER 25

Version: right
 Shank size [mm]: 25.00
 Shank type: VDI
 Tool adaption: ER 25
 Coolant: IC/Ext
 Please note: demountable in left version
 Center distance [mm]: 75

8 230 27 024 Boring bar holder Ø 25

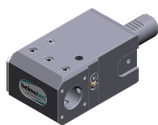


Weight [kg]: 2.860
 Version: right
 Shank size [mm]: 25.00
 Shank type: VDI
 Tool adaption: Ø 25
 Coolant: IC/Ext
 Please note: demountable in left version
 Center distance [mm]: 75

8 230 27 041 Boring bar holder Ø 30

Weight [kg]: 2.770
 Version: right
 Shank size [mm]: 25.00
 Shank type: VDI
 Tool adaption: Ø 30
 Coolant: IC/Ext
 Please note: demountable in left version
 Center distance [mm]: 75

8 230 27 049 Boring bar holder Ø 25



Weight [kg]: 3.420
 Version: right
 Shank size [mm]: 25.00
 Shank type: VDI
 Tool adaption: Ø 25
 Coolant: IC/Ext
 Please note: demountable in left version
 Center distance [mm]: 95

8 230 27 054 Boring bar holder Ø 1"

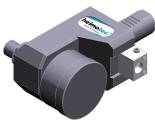
Weight [kg]: 2.850
 Version: right
 Shank size [mm]: 25.00
 Shank type: VDI
 Tool adaption: Ø 1" (25,4mm)
 Coolant: IC/Ext
 Please note: demountable in left version
 Center distance [mm]: 75

SPINNER

TC 300

Part-#	Name	
8 230 28 019	Boring bar holder Ø 32	
	Notation:	offset
	Version:	right
	Shank size [mm]:	25.00
	Shank type:	VDI
	Tool adaption:	Ø 32
	Coolant:	IC/Ext
	Center distance [mm]:	75
8 231 28 003	Boring bar holder Ø 32	
	Notation:	offset
	Version:	left
	Shank size [mm]:	25.00
	Shank type:	VDI
	Tool adaption:	Ø 32
	Coolant:	IC/Ext
	Center distance [mm]:	75
8 234 24 004	Combi facing holder sq. 20	
	Weight [kg]:	2.320
	Shank size [mm]:	25.00
	Shank type:	VDI
	Tool adaption:	Sq. 20
	Coolant:	EXT
	Please note:	demountable in left version
8 236 26 006	Tool holder HT 4	
	Notation:	180° reversible
	Version:	doubletoothed
	Shank size [mm]:	25.00
	Shank type:	VDI
	Tool adaption:	HT 4
	Coolant:	IC/Ext
	Please note:	Fixation slide stone
	Center distance [mm]:	75
8 236 27 014	Boring bar holder Ø 25	
	Version:	doubletoothed
	Shank size [mm]:	25.00
	Shank type:	VDI
	Tool adaption:	Ø 25
	Coolant:	IC/Ext
	Pressure max [bar]:	100
	Center distance [mm]:	95
8 253 25 001	Double boring bar holder Ø 16	
	Weight [kg]:	4.900
	Shank size [mm]:	25.00
	Shank type:	VDI
	Tool adaption:	Ø 16
	Coolant:	IC/Ext
	Center distance [mm]:	70/105

SPINNER TC 300

Part-#	Name	
8 253 27 008	Double boring bar holder Ø 25	
	Weight [kg]:	4.430
	Shank size [mm]:	25.00
	Shank type:	VDI
	Tool adaption:	Ø 25
	Coolant:	IC/Ext
	Center distance [mm]:	70/105
8 262 29 015	Stock stop VDI 25 - Ø 60 OD turret	
	Weight [kg]:	2.730
	Notation:	offset
	Version:	right
	Shank size [mm]:	25.00
	Shank type:	VDI
	Rotation max [1/min]:	8000
	Coolant:	no
	Please note:	Length adjustable
	Center distance [mm]:	75
8 320 23 014	Cut-off holder, height adjustable SH 32 IC	
	Weight [kg]:	1.370
	Version:	universal
	Shank size [mm]:	25.00
	Shank type:	VDI
	Tool adaption:	Clampshaft SH 32
	Coolant:	IC/Ext
	Pressure max [bar]:	70
8 320 23 020	Cut-off holder, height adjustable SH 32 IC	
	Weight [kg]:	1.540
	Version:	universal
	Shank size [mm]:	25.00
	Shank type:	VDI
	Tool adaption:	Clampshaft SH 32
	Coolant:	IC/Ext
	Pressure max [bar]:	70
	Please note:	Clampshaft internal

heimatec.u-tec®

heimatec.com

Products / Tool change systems /
u-tec® Tool-changing system



versions see catalog



heimatec.easy-quick

heimatec.com

Products / Tool change systems /
easy-quick HT quick-changing system



versions see catalog



heimatec.Capto™

heimatec.com

Products / Tool change systems /
heimatec.Capto™ quick-changing system



versions see catalog



heimatec.accessories

heimatec.com

Products / Accessories



versions see catalog





● heimatec overseas branches

○ global representations of heimatec

heimatec[®]

heimatec GmbH
Präzisionswerkzeuge
Carl-Benz-Str. 4
77871 Renchen
Germany

T +49 7843 9466 0
www.heimatec.com
info@heimatec.com

Please find the contact details of our worldwide trading partners on our website:
<https://heimatec.com/business-partners>