

**TOPSELLER -**  
many more available!

Live Tools

**heimatec**®

# Doosan Puma 2100 BMT 55

Part-#	Tool adaption	Rotation max [1/min]	Gear ratio	Coolant	Pressure max.	Center distance
<b>Axial drilling and milling head</b>						
8 010 55 038	<b>ER 25 A - u-tec</b>	6.000	1:1	IC/Ext	25 bar	--
8 010 55 039	<b>ER 25 A - u-tec</b>	12.000	1:1	EXT	140 bar	--
<b>Axial drilling and milling head, offset</b>						
8 019 55 054	<b>ER 25 A - u-tec</b>	6.000	1:1	IC/Ext	140 bar	--
<b>Radial drilling and milling head</b>						
8 030 55 175	<b>ER 25 A - u-tec</b>	12.000	1:1	EXT	--	<b>60 mm</b>
8 030 55 176	<b>ER 25 A - u-tec</b>	12.000	1:1	IC/Ext	140 bar	<b>60 mm</b>
8 030 55 102	<b>ER 25 A - u-tec</b>	12.000	1:1	EXT	--	<b>70 mm</b>
<b>Universal head, offset</b>						
8 043 55 005	<b>ER 25 A - u-tec</b>	6.000	1:1	EXT	--	<b>50 mm</b>

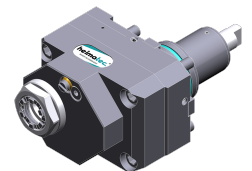
*Illustrations similar.*



8 010 55 038



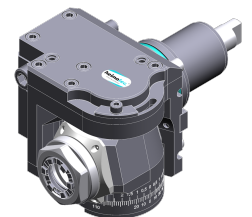
8 010 55 039



8 019 55 054



8 030 55 175



8 043 55 005

**TOPSELLER -**  
many more available!

Static Tools

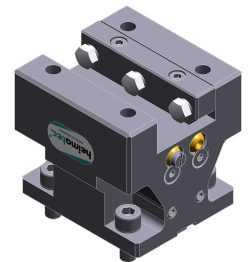
**heimatec**®

# Doosan

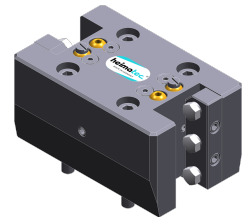
## Puma 2100 BMT 55

Part-#	Tool adaption	Coolant	Pressure max.
<b>Combi facing holder</b>			
8 244 05 003	<b>Sq. 25</b>	EXT	80 bar
<b>Double turning holder</b>			
8 251 05 001	<b>Sq. 25</b>	EXT	80 bar
<b>Double boring bar holder</b>			
8 253 07 011	<b>Ø 25</b>	IC/Ext	80 bar
8 253 07 047	<b>Ø 25</b>	IC/Ext	--
8 253 08 002	<b>Ø 32</b>	IC/Ext	--
<b>Multiple turning holder</b>			
8 259 04 007	<b>Sq. 20</b>	IC/Ext	--
<b>Cut-off holder, height adjustable</b>			
8 320 03 025	<b>Clampshaft SH 32</b>	IC/Ext	70 bar

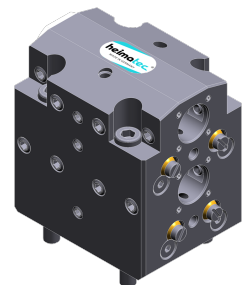
*Illustrations similar.*



8 244 05 003



8 251 05 001



8 253 07 011



8 259 04 007