

Mazak

QT Nexus 250
M/MS/MY/MSY -
12 Stationen



High-tech from heimatec - heimatec - Tools and systems for productive turning and milling

heimatec belongs to the international technology and quality leaders for precision tools and specializes in the development and production of high-precision static and live tools for all CNC lathes, CNC turn-/mill machines and CNC machining centers.

The range of products* spans from static BMT and VDI tool holders, live tools up to highly complex customer-specific individual solutions. heimatec, headquartered in Renchen, has a own subsidiary in Asia and India and numerous representatives as well as trading partners all over the world.

*OUR PRODCUTS

Static tool holders

Live tool units

Precision tools

Tools for turning and machining centres

Tools for swiss type lathes

Tool changing and uick-change systems

Tool systems for gear production

Digital tool management

This catalogue, including all its parts, is protected by copyright. Any use outside the restricted limitations of the Copyright Act without the consent of heimatec is inadmissible and liable to prosecution. This applies in particular to duplication, translation, microfilming and storage and processing in electronic systems.

heimatec GmbH reserves the right to make technical changes at any time without giving prior notice. This applies in particular to adjustments at any time to meet new or changed international standards, or in case of further developments of our products or manufacturing processes.

The current version of our General Terms and Conditions can be found on our website.

QT Nexus 250 M/MS/MY/MSY - 12 Stationen

Part-#	Name	
8 010 45 009	Axial drilling and milling head ER 25	
	Weight [kg]:	3.920
	Tool drive:	Flat (~DIN 1809)
	Shank size [mm]:	40.00
	Shank type:	VDI
	Tool adaption:	ER 25
	Gear ratio [i]:	1:1
	Torque max [Nm]:	50
	Rotation max [1/min]:	6000
	Rotating direction:	same
	Coolant:	EXT
8 010 46 044	Axial drilling and milling head ER 32 IC	
	Weight [kg]:	3.980
	Tool drive:	Flat (~DIN 1809)
	Shank size [mm]:	40.00
	Shank type:	VDI
	Tool adaption:	ER 32
	Gear ratio [i]:	1:1
	Torque max [Nm]:	50
	Rotation max [1/min]:	6000
	Rotating direction:	same
	Coolant:	IC/Ext
	Pressure max [bar]:	25
8 010 46 239	Axial drilling and milling head ER 32 AX UT IC	
	Weight [kg]:	4.030
	Tool drive:	Flat (~DIN 1809)
	Shank size [mm]:	40.00
	Shank type:	VDI
	Tool adaption:	ER 32 A - u-tec
	Gear ratio [i]:	1:1
	Torque max [Nm]:	50
	Rotation max [1/min]:	6000
	Rotating direction:	same
	Coolant:	IC/Ext
	Pressure max [bar]:	25
8 011 44 003	Axial milling head universal arbor 3/4"	
	Tool drive:	Flat (~DIN 1809)
	Shank size [mm]:	40.00
	Shank type:	VDI
	Tool adaption:	Universal arbor 3/4" (19,05mm)
	Gear ratio [i]:	1:1
	Torque max [Nm]:	50
	Rotation max [1/min]:	6000
	Rotating direction:	same
	Coolant:	EXT
8 011 44 015	Axial milling head universal arbor 16	
	Tool drive:	Flat (~DIN 1809)
	Shank size [mm]:	40.00
	Shank type:	VDI
	Tool adaption:	Universal arbor 16
	Gear ratio [i]:	1:1
	Torque max [Nm]:	50
	Rotation max [1/min]:	6000
	Rotating direction:	same

QT Nexus 250 M/MS/MY/MSY - 12 Stationen

Part-#	Name	
	Coolant:	EXT
	Please note:	stronger bearing
8 018 45 000	Axial drilling and milling head ER 25	
	Weight [kg]:	6.500
	Notation:	Y-axes adjustable
	Tool drive:	Flat (~DIN 1809)
	Shank size [mm]:	40.00
	Shank type:	VDI
	Tool adaption:	ER 25
	Gear ratio [i]:	1:1
	Torque max [Nm]:	50
	Rotation max [1/min]:	6000
	Rotating direction:	opposite
	Coolant:	EXT
8 019 42 000	Axial drilling and milling head Weldon 6	
	Notation:	offset
	Tool drive:	Flat (~DIN 1809)
	Shank size [mm]:	40.00
	Shank type:	VDI
	Tool adaption:	Weldon (DIN 1835 b) 6
	Gear ratio [i]:	1:1
	Torque max [Nm]:	50
	Rotation max [1/min]:	6000
	Rotating direction:	opposite
	Coolant:	EXT
	Offset [mm]:	50
8 019 43 001	Axial drilling and milling head Weldon 8	
	Notation:	offset
	Tool drive:	Flat (~DIN 1809)
	Shank size [mm]:	40.00
	Shank type:	VDI
	Tool adaption:	Weldon (DIN 1835 b) 8
	Gear ratio [i]:	1:1
	Torque max [Nm]:	50
	Rotation max [1/min]:	6000
	Rotating direction:	opposite
	Coolant:	EXT
	Offset [mm]:	50
8 019 44 000	Axial milling head universal arbor 16	
	Notation:	offset
	Tool drive:	Flat (~DIN 1809)
	Shank size [mm]:	40.00
	Shank type:	VDI
	Tool adaption:	Universal arbor 16
	Gear ratio [i]:	1:2
	Torque max [Nm]:	25
	Rotation max [1/min]:	12000
	Rotating direction:	opposite
	Coolant:	EXT
	Offset [mm]:	50

QT Nexus 250 M/MS/MY/MSY - 12 Stationen

Part-#	Name	
8 019 44 006	Axial drilling and milling head Weldon 10	
	Notation:	offset
	Tool drive:	Flat (~DIN 1809)
	Shank size [mm]:	40.00
	Shank type:	VDI
	Tool adaption:	Weldon (DIN 1835 b) 10
	Gear ratio [i]:	1:1
	Torque max [Nm]:	50
	Rotation max [1/min]:	6000
	Rotating direction:	opposite
	Coolant:	EXT
	Offset [mm]:	50
8 019 45 015	Axial milling head universal arbor 22	
	Notation:	offset
	Tool drive:	Flat (~DIN 1809)
	Shank size [mm]:	40.00
	Shank type:	VDI
	Tool adaption:	Universal arbor 22
	Gear ratio [i]:	1:2
	Torque max [Nm]:	25
	Rotation max [1/min]:	12000
	Rotating direction:	opposite
	Coolant:	EXT
	Offset [mm]:	50
8 019 45 036	Axial milling head universal arbor 22	
	Weight [kg]:	6.010
	Notation:	offset
	Tool drive:	Flat (~DIN 1809)
	Shank size [mm]:	40.00
	Shank type:	VDI
	Tool adaption:	Universal arbor 22
	Gear ratio [i]:	1:1
	Torque max [Nm]:	50
	Rotation max [1/min]:	6000
	Rotating direction:	opposite
	Coolant:	EXT
	Please note:	stronger bearing
8 019 45 040	Axial milling head universal arbor 22	
	Notation:	offset
	Tool drive:	Flat (~DIN 1809)
	Shank size [mm]:	40.00
	Shank type:	VDI
	Tool adaption:	Universal arbor 22
	Gear ratio [i]:	2:1
	Torque max [Nm]:	80
	Rotation max [1/min]:	3000
	Rotating direction:	opposite
	Coolant:	EXT
	Please note:	stronger bearing
	Offset [mm]:	50

QT Nexus 250 M/MS/MY/MSY - 12 Stationen

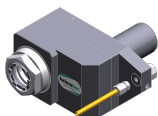
Part-#	Name	
8 019 45 049	Axial milling head universal arbor 22	
	Notation:	offset
	Version:	Special
	Tool drive:	Flat (~DIN 1809)
	Shank size [mm]:	40.00
	Shank type:	VDI
	Tool adaption:	Universal arbor 22
	Gear ratio [i]:	1:1
	Torque max [Nm]:	50
	Rotation max [1/min]:	6000
	Rotating direction:	opposite
	Coolant:	EXT
	Please note:	stronger bearing (extended version)
	Offset [mm]:	50
8 019 45 070	Axial drilling and milling head Weldon 16 IC	
	Notation:	offset
	Tool drive:	Flat (~DIN 1809)
	Shank size [mm]:	40.00
	Shank type:	VDI
	Tool adaption:	Weldon (DIN 1835 b) 16
	Gear ratio [i]:	1:1
	Torque max [Nm]:	50
	Rotation max [1/min]:	6000
	Rotating direction:	opposite
	Coolant:	IC/Ext
	Pressure max [bar]:	25
	Please note:	stronger bearing
	Offset [mm]:	50
8 019 45 108	Axial drilling and milling head ER 25 AX UT	
	Weight [kg]:	5.450
	Notation:	offset
	Tool drive:	Flat (~DIN 1809)
	Shank size [mm]:	40.00
	Shank type:	VDI
	Tool adaption:	ER 25 A - u-tec
	Gear ratio [i]:	1:1
	Torque max [Nm]:	50
	Rotation max [1/min]:	6000
	Rotating direction:	opposite
	Coolant:	EXT
	Please note:	stronger bearing
	Offset [mm]:	50
8 019 45 109	Axial drilling and milling head ER 25 AX UT IC	
	Weight [kg]:	5.850
	Notation:	offset
	Tool drive:	Flat (~DIN 1809)
	Shank size [mm]:	40.00
	Shank type:	VDI
	Tool adaption:	ER 25 A - u-tec
	Gear ratio [i]:	1:1
	Torque max [Nm]:	50
	Rotation max [1/min]:	6000
	Rotating direction:	opposite
	Coolant:	IC/Ext
	Pressure max [bar]:	140

QT Nexus 250 M/MS/MY/MSY - 12 Stationen

Part-#	Name	
	Please note:	stronger bearing
	Offset [mm]:	50
8 019 45 143	Axial drilling and milling head ER 25 AX UT	
	Weight [kg]:	7.280
	Notation:	offset
	Tool drive:	Flat (~DIN 1809)
	Shank size [mm]:	40.00
	Shank type:	VDI
	Tool adaption:	ER 25 A - u-tec
	Gear ratio [i]:	1:3
	Torque max [Nm]:	16
	Rotation max [1/min]:	15000
	Rotating direction:	opposite
	Coolant:	EXT
	Please note:	stronger bearing
	Offset [mm]:	50
8 019 46 004	Axial drilling and milling head ER 32	
	Weight [kg]:	5.480
	Notation:	offset
	Tool drive:	Flat (~DIN 1809)
	Shank size [mm]:	40.00
	Shank type:	VDI
	Tool adaption:	ER 32
	Gear ratio [i]:	1:1
	Torque max [Nm]:	50
	Rotation max [1/min]:	6000
	Rotating direction:	opposite
	Coolant:	EXT
	Offset [mm]:	50
8 019 46 010	Axial drilling and milling head ER 32 IC	
	Weight [kg]:	5.700
	Notation:	offset
	Tool drive:	Flat (~DIN 1809)
	Shank size [mm]:	40.00
	Shank type:	VDI
	Tool adaption:	ER 32
	Gear ratio [i]:	1:1
	Torque max [Nm]:	50
	Rotation max [1/min]:	6000
	Rotating direction:	opposite
	Coolant:	IC/Ext
	Pressure max [bar]:	140
	Offset [mm]:	50
8 019 46 014	Axial drilling and milling head ER 32 AX UT	
	Notation:	offset
	Tool drive:	Flat (~DIN 1809)
	Shank size [mm]:	40.00
	Shank type:	VDI
	Tool adaption:	ER 32 A - u-tec
	Gear ratio [i]:	2:1
	Torque max [Nm]:	80
	Rotation max [1/min]:	3000
	Rotating direction:	opposite
	Coolant:	EXT

QT Nexus 250 M/MS/MY/MSY - 12 Stationen

Part-#	Name	
	Please note:	stronger bearing
	Offset [mm]:	50
8 019 46 062	Axial drilling and milling head ER 32 IC	
	Notation:	offset
	Employment for:	Sub spindle
	Tool drive:	Flat (~DIN 1809)
	Shank size [mm]:	40.00
	Shank type:	VDI
	Tool adaption:	ER 32
	Gear ratio [i]:	1:1
	Torque max [Nm]:	50
	Rotation max [1/min]:	6000
	Rotating direction:	opposite
	Coolant:	IC/Ext
	Pressure max [bar]:	140
	Offset [mm]:	50
8 019 46 071	Axial drilling and milling head ER 32 AX UT IC	
	Weight [kg]:	5.990
	Notation:	offset
	Tool drive:	Flat (~DIN 1809)
	Shank size [mm]:	40.00
	Shank type:	VDI
	Tool adaption:	ER 32 A - u-tec
	Gear ratio [i]:	1:1
	Torque max [Nm]:	50
	Rotation max [1/min]:	6000
	Rotating direction:	opposite
	Coolant:	IC/Ext
	Pressure max [bar]:	140
	Please note:	stronger bearing
	Offset [mm]:	50
8 019 46 072	Axial drilling and milling head HT 4	
	Notation:	offset
	Tool drive:	Flat (~DIN 1809)
	Shank size [mm]:	40.00
	Shank type:	VDI
	Tool adaption:	HT 4
	Gear ratio [i]:	1:1
	Torque max [Nm]:	50
	Rotation max [1/min]:	6000
	Rotating direction:	opposite
	Coolant:	EXT
	Offset [mm]:	50
8 019 46 104	Axial drilling and milling head ER 32 AX UT	
	Weight [kg]:	5.850
	Notation:	offset
	Tool drive:	Flat (~DIN 1809)
	Shank size [mm]:	40.00
	Shank type:	VDI
	Tool adaption:	ER 32 A - u-tec
	Gear ratio [i]:	1:1
	Torque max [Nm]:	50
	Rotation max [1/min]:	6000



QT Nexus 250 M/MS/MY/MSY - 12 Stationen

Part-#	Name	
	Rotating direction:	opposite
	Coolant:	EXT
	Please note:	stronger bearing
	Offset [mm]:	50
8 019 46 111	Axial drilling and milling head ER 32 AX UT IC	
	Weight [kg]:	7.320
	Notation:	offset
	Tool drive:	Flat (~DIN 1809)
	Shank size [mm]:	40.00
	Shank type:	VDI
	Tool adaption:	ER 32 A - u-tec
	Gear ratio [i]:	1:2
	Torque max [Nm]:	32
	Rotation max [1/min]:	12000
	Rotating direction:	opposite
	Coolant:	IC/Ext
	Pressure max [bar]:	140
8 019 46 127	Axial drilling and milling head ER 32 AX UT IC	
	Weight [kg]:	6.860
	Notation:	offset
	Employment for:	Sub spindle
	Tool drive:	Flat (~DIN 1809)
	Shank size [mm]:	40.00
	Shank type:	VDI
	Tool adaption:	ER 32 A - u-tec
	Gear ratio [i]:	1:1
	Torque max [Nm]:	50
	Rotation max [1/min]:	6000
	Rotating direction:	opposite
	Coolant:	IC/Ext
	Pressure max [bar]:	140
	Please note:	stronger bearing
	Offset [mm]:	50
8 019 46 132	Axial drilling and milling head ER 32 AX UT	
	Weight [kg]:	6.790
	Notation:	offset
	Employment for:	Sub spindle
	Tool drive:	Flat (~DIN 1809)
	Shank size [mm]:	40.00
	Shank type:	VDI
	Tool adaption:	ER 32 A - u-tec
	Gear ratio [i]:	1:1
	Torque max [Nm]:	50
	Rotation max [1/min]:	6000
	Rotating direction:	opposite
	Coolant:	EXT
	Please note:	stronger bearing
	Offset [mm]:	50



QT Nexus 250 M/MS/MY/MSY - 12 Stationen

Part-#	Name	
8 019 46 151	Axial drilling and milling head HT 4 IC	
	Weight [kg]:	5.570
	Notation:	offset
	Tool drive:	Flat (~DIN 1809)
	Shank size [mm]:	40.00
	Shank type:	VDI
	Tool adaption:	HT 4
	Gear ratio [i]:	1:1
	Torque max [Nm]:	50
	Rotation max [1/min]:	6000
	Rotating direction:	opposite
	Coolant:	IC/Ext
	Pressure max [bar]:	140
	Offset [mm]:	50
8 019 46 186	Axial drilling and milling head Weldon 20	
	Weight [kg]:	6.180
	Notation:	offset
	Tool drive:	Flat (~DIN 1809)
	Shank size [mm]:	40.00
	Shank type:	VDI
	Tool adaption:	Weldon (DIN 1835 b) 20
	Gear ratio [i]:	1:1
	Torque max [Nm]:	50
	Rotation max [1/min]:	6000
	Rotating direction:	opposite
	Coolant:	EXT
	Please note:	stronger bearing
	Offset [mm]:	50
8 019 46 202	Axial drilling and milling head ER 32 AX UT IC	
	Weight [kg]:	7.280
	Notation:	offset
	Tool drive:	Flat (~DIN 1809)
	Shank size [mm]:	40.00
	Shank type:	VDI
	Tool adaption:	ER 32 A - u-tec
	Gear ratio [i]:	2:1
	Torque max [Nm]:	80
	Rotation max [1/min]:	3000
	Rotating direction:	opposite
	Coolant:	IC/Ext
	Pressure max [bar]:	140
	Please note:	stronger bearing
	Offset [mm]:	50
8 019 46 221	Axial drilling and milling head ER 32 AX UT	
	Weight [kg]:	9.330
	Notation:	offset
	Employment for:	Main spindle
	Tool drive:	Flat (~DIN 1809)
	Shank size [mm]:	40.00
	Shank type:	VDI
	Tool adaption:	ER 32 A - u-tec
	Gear ratio [i]:	1:1
	Torque max [Nm]:	50
	Rotation max [1/min]:	6000
	Rotating direction:	opposite

QT Nexus 250 M/MS/MY/MSY - 12 Stationen

Part-#	Name	
	Coolant:	EXT
	Please note:	stronger bearing
	Offset [mm]:	115
8 019 46 224	Axial drilling and milling head HT 4 IC	
	Weight [kg]:	7.480
	Notation:	offset
	Tool drive:	Flat (~DIN 1809)
	Shank size [mm]:	40.00
	Shank type:	VDI
	Tool adaption:	HT 4
	Gear ratio [i]:	1:3
	Torque max [Nm]:	16
	Rotation max [1/min]:	15000
	Rotating direction:	opposite
	Coolant:	IC/Ext
	Pressure max [bar]:	140
	Please note:	stronger bearing
	Offset [mm]:	50
8 019 47 003	Axial drilling and milling head Weldon 25	
	Weight [kg]:	6.270
	Notation:	offset
	Tool drive:	Flat (~DIN 1809)
	Shank size [mm]:	40.00
	Shank type:	VDI
	Tool adaption:	Weldon (DIN 1835 b) 25
	Gear ratio [i]:	1:1
	Torque max [Nm]:	50
	Rotation max [1/min]:	6000
	Rotating direction:	opposite
	Coolant:	EXT
	Please note:	stronger bearing
	Offset [mm]:	50
8 019 47 006	Axial drilling and milling head HT 5	
	Weight [kg]:	5.430
	Notation:	offset
	Tool drive:	Flat (~DIN 1809)
	Shank size [mm]:	40.00
	Shank type:	VDI
	Tool adaption:	HT 5
	Gear ratio [i]:	1:1
	Torque max [Nm]:	50
	Rotation max [1/min]:	6000
	Rotating direction:	opposite
	Coolant:	EXT
	Offset [mm]:	50
8 019 47 009	Axial drilling and milling head HT 5 IC	
	Weight [kg]:	5.620
	Notation:	offset
	Tool drive:	Flat (~DIN 1809)
	Shank size [mm]:	40.00
	Shank type:	VDI
	Tool adaption:	HT 5
	Gear ratio [i]:	1:1
	Torque max [Nm]:	50

QT Nexus 250 M/MS/MY/MSY - 12 Stationen

Part-#	Name	
	Rotation max [1/min]:	6000
	Rotating direction:	opposite
	Coolant:	IC/Ext
	Pressure max [bar]:	140
8 019 47 015	Axial drilling and milling head HT 5	
	Notation:	offset
	Tool drive:	Flat (~DIN 1809)
	Shank size [mm]:	40.00
	Shank type:	VDI
	Tool adaption:	HT 5
	Gear ratio [i]:	1:1
	Torque max [Nm]:	50
	Rotation max [1/min]:	6000
	Rotating direction:	opposite
	Coolant:	EXT
	Please note:	stronger bearing
	Offset [mm]:	50
8 019 47 016	Axial drilling and milling head HT 5 IC	
	Weight [kg]:	5.980
	Notation:	offset
	Tool drive:	Flat (~DIN 1809)
	Shank size [mm]:	40.00
	Shank type:	VDI
	Tool adaption:	HT 5
	Gear ratio [i]:	1:1
	Torque max [Nm]:	50
	Rotation max [1/min]:	6000
	Rotating direction:	opposite
	Coolant:	IC/Ext
	Pressure max [bar]:	140
	Please note:	stronger bearing
	Offset [mm]:	50
8 030 42 002	Radial drilling and milling head Weldon 6 IC	
	Tool drive:	Flat (~DIN 1809)
	Shank size [mm]:	40.00
	Shank type:	VDI
	Tool adaption:	Weldon (DIN 1835 b) 6
	Gear ratio [i]:	1:2
	Torque max [Nm]:	16
	Rotation max [1/min]:	12000
	Rotating direction:	opposite
	Coolant:	IC/Ext
	Pressure max [bar]:	25
8 030 43 006	Radial drilling and milling head Weldon 8 IC	
	Employment for:	Main spindle
	Tool drive:	Flat (~DIN 1809)
	Shank size [mm]:	40.00
	Shank type:	VDI
	Tool adaption:	Weldon (DIN 1835 b) 8
	Gear ratio [i]:	1:1
	Torque max [Nm]:	50
	Rotation max [1/min]:	6000
	Rotating direction:	opposite
	Coolant:	IC/Ext

QT Nexus 250 M/MS/MY/MSY - 12 Stationen

Part-#	Name	
	Pressure max [bar]:	25
	Center distance [mm]:	130
8 030 44 085	Radial drilling and milling head ER 16 AX UT	
	Weight [kg]:	9.570
	Employment for:	Main spindle
	Tool drive:	Flat (~DIN 1809)
	Shank size [mm]:	40.00
	Shank type:	VDI
	Tool adaption:	ER 16 A - u-tec
	Gear ratio [i]:	1:4
	Torque max [Nm]:	5
	Rotation max [1/min]:	24000
	Rotating direction:	opposite
	Coolant:	EXT
	Center distance [mm]:	130
8 030 45 048	Radial drilling and milling head ER 25	
	Employment for:	Main spindle
	Tool drive:	Flat (~DIN 1809)
	Shank size [mm]:	40.00
	Shank type:	VDI
	Tool adaption:	ER 25
	Gear ratio [i]:	1:2
	Torque max [Nm]:	16
	Rotation max [1/min]:	12000
	Rotating direction:	opposite
	Coolant:	EXT
	Center distance [mm]:	130
8 030 45 068	Radial drilling and milling head ER 25	
	Weight [kg]:	8.680
	Tool drive:	Flat (~DIN 1809)
	Shank size [mm]:	40.00
	Shank type:	VDI
	Tool adaption:	ER 25
	Gear ratio [i]:	1:3
	Torque max [Nm]:	8
	Rotation max [1/min]:	12000
	Rotating direction:	opposite
	Coolant:	EXT
	Center distance [mm]:	130
8 030 45 116	Radial drilling and milling head Weldon 16 IC	
	Employment for:	Main spindle
	Tool drive:	Flat (~DIN 1809)
	Shank size [mm]:	40.00
	Shank type:	VDI
	Tool adaption:	Weldon (DIN 1835 b) 16
	Gear ratio [i]:	1:1
	Torque max [Nm]:	50
	Rotation max [1/min]:	6000
	Rotating direction:	opposite
	Coolant:	IC/Ext
	Pressure max [bar]:	25
	Please note:	stronger bearing
	Center distance [mm]:	130

QT Nexus 250 M/MS/MY/MSY - 12 Stationen

Part-#	Name
8 030 45 174	Radial drilling and milling head ER 25 AX UT IC
	Weight [kg]: 8.820
	Employment for: Main spindle
	Tool drive: Flat (~DIN 1809)
	Shank size [mm]: 40.00
	Shank type: VDI
	Tool adaption: ER 25 A - u-tec
	Gear ratio [i]: 1:3
	Torque max [Nm]: 12
	Rotation max [1/min]: 15000
	Rotating direction: same
	Coolant: IC/Ext
	Pressure max [bar]: 140
	Please note: stronger bearing
	Center distance [mm]: 130
8 030 45 205	Radial drilling and milling head ER 25 AX UT IC
	Weight [kg]: 8.890
	Employment for: Main spindle
	Tool drive: Flat (~DIN 1809)
	Shank size [mm]: 40.00
	Shank type: VDI
	Tool adaption: ER 25 A - u-tec
	Gear ratio [i]: 1:1
	Torque max [Nm]: 50
	Rotation max [1/min]: 6000
	Rotating direction: opposite
	Coolant: IC/Ext
	Pressure max [bar]: 140
	Center distance [mm]: 130
8 030 45 209	Radial drilling and milling head ER 25 AX UT
	Weight [kg]: 8.380
	Employment for: Main spindle
	Tool drive: Flat (~DIN 1809)
	Shank size [mm]: 40.00
	Shank type: VDI
	Tool adaption: ER 25 A - u-tec
	Gear ratio [i]: 1:1
	Torque max [Nm]: 50
	Rotation max [1/min]: 6000
	Rotating direction: opposite
	Coolant: EXT
	Center distance [mm]: 130
8 030 45 247	Radial drilling and milling head ER 25 AX UT
	Weight [kg]: 8.610
	Employment for: Main spindle
	Tool drive: Flat (~DIN 1809)
	Shank size [mm]: 40.00
	Shank type: VDI
	Tool adaption: ER 25 A - u-tec
	Gear ratio [i]: 1:3
	Torque max [Nm]: 12
	Rotation max [1/min]: 15000
	Rotating direction: same
	Coolant: EXT
	Please note: stronger bearing

QT Nexus 250 M/MS/MY/MSY - 12 Stationen

Part-#	Name	
	Center distance [mm]:	130
8 030 45 303	Radial drilling and milling head ER 25 AX UT IC	
	Weight [kg]:	8.830
	Employment for:	Sub spindle
	Tool drive:	Flat (~DIN 1809)
	Shank size [mm]:	40.00
	Shank type:	VDI
	Tool adaption:	ER 25 A - u-tec
	Gear ratio [i]:	1:3
	Torque max [Nm]:	12
	Rotation max [1/min]:	15000
	Rotating direction:	same
	Coolant:	IC/Ext
	Pressure max [bar]:	140
	Please note:	stronger bearing
	Center distance [mm]:	130
8 030 46 039	Radial drilling and milling head ER 32 IC	
	Weight [kg]:	9.040
	Employment for:	Main spindle
	Tool drive:	Flat (~DIN 1809)
	Shank size [mm]:	40.00
	Shank type:	VDI
	Tool adaption:	ER 32
	Gear ratio [i]:	1:1
	Torque max [Nm]:	50
	Rotation max [1/min]:	6000
	Rotating direction:	opposite
	Coolant:	IC/Ext
	Pressure max [bar]:	140
	Center distance [mm]:	130
8 030 46 064	Radial drilling and milling head ER 32	
	Weight [kg]:	8.480
	Employment for:	Main spindle
	Tool drive:	Flat (~DIN 1809)
	Shank size [mm]:	40.00
	Shank type:	VDI
	Tool adaption:	ER 32
	Gear ratio [i]:	2:1
	Torque max [Nm]:	63
	Rotation max [1/min]:	4000
	Rotating direction:	opposite
	Coolant:	EXT
	Center distance [mm]:	130
8 030 46 098	Radial drilling and milling head ER 32	
	Weight [kg]:	9.060
	Employment for:	Main spindle
	Tool drive:	Flat (~DIN 1809)
	Shank size [mm]:	40.00
	Shank type:	VDI
	Tool adaption:	ER 32
	Gear ratio [i]:	1:1
	Torque max [Nm]:	50
	Rotation max [1/min]:	6000
	Rotating direction:	opposite

QT Nexus 250 M/MS/MY/MSY - 12 Stationen

Part-#	Name	
	Coolant:	EXT
	Please note:	stronger bearing
	Center distance [mm]:	130
8 030 46 108	Radial drilling and milling head ER 32	
	Version:	Special
	Tool drive:	Flat (~DIN 1809)
	Shank size [mm]:	40.00
	Shank type:	VDI
	Tool adaption:	ER 32
	Gear ratio [i]:	1:1
	Torque max [Nm]:	50
	Rotation max [1/min]:	6000
	Rotating direction:	opposite
	Coolant:	EXT
	Center distance [mm]:	100
8 030 46 147	Radial drilling and milling head ER 32 AS IC	
	Weight [kg]:	9.400
	Tool drive:	Flat (~DIN 1809)
	Shank size [mm]:	40.00
	Shank type:	VDI
	Tool adaption:	ER 32
	Gear ratio [i]:	1:2
	Torque max [Nm]:	16
	Rotation max [1/min]:	12000
	Rotating direction:	opposite
	Coolant:	IC
	Center distance [mm]:	130
8 030 46 174	Radial drilling and milling head Weldon 20	
	Weight [kg]:	9.120
	Employment for:	Main spindle
	Tool drive:	Flat (~DIN 1809)
	Shank size [mm]:	40.00
	Shank type:	VDI
	Tool adaption:	Weldon (DIN 1835 b) 20
	Gear ratio [i]:	1:1
	Torque max [Nm]:	50
	Rotation max [1/min]:	6000
	Rotating direction:	opposite
	Coolant:	EXT
	Please note:	stronger bearing
	Center distance [mm]:	130
8 030 46 179	Radial drilling and milling head ER 32 IC	
	Tool drive:	Flat (~DIN 1809)
	Shank size [mm]:	40.00
	Shank type:	VDI
	Tool adaption:	ER 32
	Gear ratio [i]:	2:1
	Torque max [Nm]:	63
	Rotation max [1/min]:	3000
	Rotating direction:	opposite
	Coolant:	IC/Ext
	Pressure max [bar]:	25
	Please note:	stronger bearing
	Center distance [mm]:	130

QT Nexus 250 M/MS/MY/MSY - 12 Stationen

Part-#	Name	
8 030 46 189	Radial drilling and milling head Weldon 20 IC	
	Employment for:	Main spindle
	Tool drive:	Flat (~DIN 1809)
	Shank size [mm]:	40.00
	Shank type:	VDI
	Tool adaption:	Weldon (DIN 1835 b) 20
	Gear ratio [i]:	1:1
	Torque max [Nm]:	50
	Rotation max [1/min]:	6000
	Rotating direction:	opposite
	Coolant:	IC/Ext
	Pressure max [bar]:	25
	Please note:	stronger bearing
	Center distance [mm]:	130
8 030 46 293	Radial drilling and milling head ER 32 AX UT IC	
	Weight [kg]:	8.820
	Employment for:	Main spindle
	Tool drive:	Flat (~DIN 1809)
	Shank size [mm]:	40.00
	Shank type:	VDI
	Tool adaption:	ER 32 A - u-tec
	Gear ratio [i]:	1:1
	Torque max [Nm]:	50
	Rotation max [1/min]:	6000
	Rotating direction:	opposite
	Coolant:	IC/Ext
	Pressure max [bar]:	140
	Center distance [mm]:	130
8 030 46 296	Radial drilling and milling head ER 32 AX UT	
	Weight [kg]:	8.240
	Employment for:	Main spindle
	Tool drive:	Flat (~DIN 1809)
	Shank size [mm]:	40.00
	Shank type:	VDI
	Tool adaption:	ER 32 A - u-tec
	Gear ratio [i]:	1:1
	Torque max [Nm]:	50
	Rotation max [1/min]:	6000
	Rotating direction:	opposite
	Coolant:	EXT
	Center distance [mm]:	130
8 030 46 298	Radial drilling and milling head ER 32 AX UT	
	Weight [kg]:	9.330
	Tool drive:	Flat (~DIN 1809)
	Shank size [mm]:	40.00
	Shank type:	VDI
	Tool adaption:	ER 32 A - u-tec
	Gear ratio [i]:	1:2
	Torque max [Nm]:	16
	Rotation max [1/min]:	12000
	Rotating direction:	opposite
	Coolant:	EXT
	Please note:	stronger bearing
	Center distance [mm]:	130

QT Nexus 250 M/MS/MY/MSY - 12 Stationen

Part-#	Name	
8 030 46 305	Radial drilling and milling head ER 32 AX UT	
	Weight [kg]:	8.080
	Employment for:	Sub spindle
	Tool drive:	Flat (~DIN 1809)
	Shank size [mm]:	40.00
	Shank type:	VDI
	Tool adaption:	ER 32 A - u-tec
	Gear ratio [i]:	1:1
	Torque max [Nm]:	50
	Rotation max [1/min]:	6000
	Rotating direction:	opposite
	Coolant:	EXT
	Center distance [mm]:	130
8 030 46 310	Radial drilling and milling head ER 32 AX UT IC	
	Weight [kg]:	9.790
	Tool drive:	Flat (~DIN 1809)
	Shank size [mm]:	40.00
	Shank type:	VDI
	Tool adaption:	ER 32 A - u-tec
	Gear ratio [i]:	1:2
	Torque max [Nm]:	16
	Rotation max [1/min]:	12000
	Rotating direction:	opposite
	Coolant:	IC/Ext
	Pressure max [bar]:	140
	Please note:	stronger bearing
	Center distance [mm]:	130
8 030 46 315	Radial drilling and milling head ER 32 AX UT IC	
	Weight [kg]:	8.700
	Employment for:	Sub spindle
	Tool drive:	Flat (~DIN 1809)
	Shank size [mm]:	40.00
	Shank type:	VDI
	Tool adaption:	ER 32 A - u-tec
	Gear ratio [i]:	1:1
	Torque max [Nm]:	50
	Rotation max [1/min]:	6000
	Rotating direction:	opposite
	Coolant:	IC/Ext
	Pressure max [bar]:	140
	Center distance [mm]:	130
8 030 46 375	Radial drilling and milling head ER 32 AX UT IC	
	Weight [kg]:	9.380
	Employment for:	Main spindle
	Tool drive:	Flat (~DIN 1809)
	Shank size [mm]:	40.00
	Shank type:	VDI
	Tool adaption:	ER 32 A - u-tec
	Gear ratio [i]:	1:1
	Torque max [Nm]:	50
	Rotation max [1/min]:	6000
	Rotating direction:	opposite
	Coolant:	IC/Ext
	Pressure max [bar]:	140
	Please note:	Combi bearing

QT Nexus 250 M/MS/MY/MSY - 12 Stationen

Part-#	Name	
	Center distance [mm]:	130
8 030 46 388	Radial drilling and milling head HT 4	
	Employment for:	Main spindle
	Tool drive:	Flat (~DIN 1809)
	Shank size [mm]:	40.00
	Shank type:	VDI
	Tool adaption:	HT 4
	Gear ratio [i]:	1:1
	Torque max [Nm]:	50
	Rotation max [1/min]:	6000
	Rotating direction:	opposite
	Coolant:	EXT
	Center distance [mm]:	130
8 030 46 401	Radial drilling and milling head HT 4 IC	
	Employment for:	Main spindle
	Tool drive:	Flat (~DIN 1809)
	Shank size [mm]:	40.00
	Shank type:	VDI
	Tool adaption:	HT 4
	Gear ratio [i]:	1:1
	Torque max [Nm]:	50
	Rotation max [1/min]:	6000
	Rotating direction:	opposite
	Coolant:	IC/Ext
	Pressure max [bar]:	140
	Center distance [mm]:	130
8 030 46 472	Radial drilling and milling head ER 32 AX UT	
	Weight [kg]:	8.370
	Employment for:	Main spindle
	Tool drive:	Flat (~DIN 1809)
	Shank size [mm]:	40.00
	Shank type:	VDI
	Tool adaption:	ER 32 A - u-tec
	Gear ratio [i]:	2:1
	Torque max [Nm]:	63
	Rotation max [1/min]:	4000
	Rotating direction:	opposite
	Coolant:	EXT
	Center distance [mm]:	130
8 030 47 004	Radial drilling and milling head Weldon 25	
	Weight [kg]:	9.500
	Employment for:	Main spindle
	Tool drive:	Flat (~DIN 1809)
	Shank size [mm]:	40.00
	Shank type:	VDI
	Tool adaption:	Weldon (DIN 1835 b) 25
	Gear ratio [i]:	1:1
	Torque max [Nm]:	50
	Rotation max [1/min]:	6000
	Rotating direction:	opposite
	Coolant:	EXT
	Please note:	stronger bearing
	Center distance [mm]:	130

QT Nexus 250 M/MS/MY/MSY - 12 Stationen

Part-#	Name	
8 030 47 017	Radial drilling and milling head HT 5	
	Weight [kg]:	8.440
	Employment for:	Main spindle
	Tool drive:	Flat (~DIN 1809)
	Shank size [mm]:	40.00
	Shank type:	VDI
	Tool adaption:	HT 5
	Gear ratio [i]:	1:1
	Torque max [Nm]:	50
	Rotation max [1/min]:	6000
	Rotating direction:	opposite
	Coolant:	EXT
	Center distance [mm]:	130
8 030 47 023	Radial drilling and milling head HT 5 IC	
	Weight [kg]:	8.990
	Employment for:	Main spindle
	Tool drive:	Flat (~DIN 1809)
	Shank size [mm]:	40.00
	Shank type:	VDI
	Tool adaption:	HT 5
	Gear ratio [i]:	1:1
	Torque max [Nm]:	50
	Rotation max [1/min]:	6000
	Rotating direction:	opposite
	Coolant:	IC/Ext
	Pressure max [bar]:	140
	Center distance [mm]:	130
8 030 48 001	Radial drilling and milling head HT 6	
	Employment for:	Main spindle
	Tool drive:	Flat (~DIN 1809)
	Shank size [mm]:	40.00
	Shank type:	VDI
	Tool adaption:	HT 6
	Gear ratio [i]:	1:1
	Torque max [Nm]:	50
	Rotation max [1/min]:	6000
	Rotating direction:	opposite
	Coolant:	EXT
	Please note:	stronger bearing
	Center distance [mm]:	130
8 030 48 002	Radial drilling and milling head HT 6 IC	
	Employment for:	Main spindle
	Tool drive:	Flat (~DIN 1809)
	Shank size [mm]:	40.00
	Shank type:	VDI
	Tool adaption:	HT 6
	Gear ratio [i]:	1:1
	Torque max [Nm]:	50
	Rotation max [1/min]:	6000
	Rotating direction:	opposite
	Coolant:	IC/Ext
	Pressure max [bar]:	25
	Please note:	stronger bearing
	Center distance [mm]:	130

QT Nexus 250 M/MS/MY/MSY - 12 Stationen

Part-#	Name	
8 030 48 013	Radial drilling and milling head Weldon 32	
	Tool drive:	Flat (~DIN 1809)
	Shank size [mm]:	40.00
	Shank type:	VDI
	Tool adaption:	Weldon (DIN 1835 b) 32
	Gear ratio [i]:	2:1
	Torque max [Nm]:	63
	Rotation max [1/min]:	4000
	Rotating direction:	opposite
	Coolant:	EXT
	Please note:	stronger bearing
8 031 44 016	Radial milling head universal arbor 16	
	Employment for:	Main spindle
	Tool drive:	Flat (~DIN 1809)
	Shank size [mm]:	40.00
	Shank type:	VDI
	Tool adaption:	Universal arbor 16
	Gear ratio [i]:	1:1
	Torque max [Nm]:	50
	Rotation max [1/min]:	6000
	Rotating direction:	opposite
	Coolant:	EXT
	Center distance [mm]:	130
8 031 44 017	Radial milling head universal arbor 16	
	Tool drive:	Flat (~DIN 1809)
	Shank size [mm]:	40.00
	Shank type:	VDI
	Tool adaption:	Universal arbor 16
	Gear ratio [i]:	2:1
	Torque max [Nm]:	63
	Rotation max [1/min]:	3000
	Rotating direction:	opposite
	Coolant:	EXT
	Please note:	stronger bearing
	Center distance [mm]:	130
8 031 44 023	Radial milling head universal arbor 16	
	Employment for:	Main spindle
	Tool drive:	Flat (~DIN 1809)
	Shank size [mm]:	40.00
	Shank type:	VDI
	Tool adaption:	Universal arbor 16
	Gear ratio [i]:	1:1
	Torque max [Nm]:	50
	Rotation max [1/min]:	6000
	Rotating direction:	opposite
	Coolant:	EXT
	Please note:	stronger bearing
	Center distance [mm]:	130

QT Nexus 250 M/MS/MY/MSY - 12 Stationen

Part-#	Name	
8 031 45 006	Radial milling head universal arbor 22	
	Employment for:	Main spindle
	Tool drive:	Flat (~DIN 1809)
	Shank size [mm]:	40.00
	Shank type:	VDI
	Tool adaption:	Universal arbor 22
	Gear ratio [i]:	1:1
	Torque max [Nm]:	50
	Rotation max [1/min]:	6000
	Rotating direction:	opposite
	Coolant:	EXT
	Center distance [mm]:	130
8 031 45 010	Radial milling head universal arbor 22	
	Employment for:	Main spindle
	Tool drive:	Flat (~DIN 1809)
	Shank size [mm]:	40.00
	Shank type:	VDI
	Tool adaption:	Universal arbor 22
	Gear ratio [i]:	2:1
	Torque max [Nm]:	63
	Rotation max [1/min]:	4000
	Rotating direction:	opposite
	Coolant:	EXT
	Center distance [mm]:	130
8 031 45 022	Radial milling head universal arbor 22	
	Weight [kg]:	9.180
	Employment for:	Main spindle
	Tool drive:	Flat (~DIN 1809)
	Shank size [mm]:	40.00
	Shank type:	VDI
	Tool adaption:	Universal arbor 22
	Gear ratio [i]:	2:1
	Torque max [Nm]:	63
	Rotation max [1/min]:	4000
	Rotating direction:	opposite
	Coolant:	EXT
	Please note:	stronger bearing
	Center distance [mm]:	130
8 031 45 023	Radial milling head universal arbor 22	
	Tool drive:	Flat (~DIN 1809)
	Shank size [mm]:	40.00
	Shank type:	VDI
	Tool adaption:	Universal arbor 22
	Gear ratio [i]:	1:1
	Torque max [Nm]:	50
	Rotation max [1/min]:	6000
	Rotating direction:	opposite
	Coolant:	EXT
	Please note:	stronger bearing
	Center distance [mm]:	130

QT Nexus 250 M/MS/MY/MSY - 12 Stationen

Part-#	Name	
8 031 45 035	Radial polygon head arbor 22	
	Weight [kg]:	9.130
	Employment for:	Main spindle
	Tool drive:	Flat (~DIN 1809)
	Shank size [mm]:	40.00
	Shank type:	VDI
	Tool adaption:	Arbor 22
	Gear ratio [i]:	2:1
	Torque max [Nm]:	63
	Rotation max [1/min]:	4000
	Rotating direction:	opposite
	Coolant:	EXT
	Please note:	stronger bearing
	Center distance [mm]:	130
8 031 45 038	Radial polygon head arbor 22	
	Employment for:	Main spindle
	Tool drive:	Flat (~DIN 1809)
	Shank size [mm]:	40.00
	Shank type:	VDI
	Tool adaption:	Polygon arbor 22
	Gear ratio [i]:	1:1
	Torque max [Nm]:	50
	Rotation max [1/min]:	6000
	Rotating direction:	opposite
	Coolant:	EXT
	Please note:	stronger bearing
	Center distance [mm]:	130
8 033 46 055	Radial drilling and milling head ER 32 AX UT	
	Weight [kg]:	10.620
	Notation:	offset
	Employment for:	Sub spindle
	Tool drive:	Flat (~DIN 1809)
	Shank size [mm]:	40.00
	Shank type:	VDI
	Tool adaption:	ER 32 A - u-tec
	Gear ratio [i]:	1:1
	Torque max [Nm]:	50
	Rotation max [1/min]:	6000
	Rotating direction:	same
	Coolant:	EXT
	Center distance [mm]:	130
8 033 46 120	Radial drilling and milling head ER 32 AX UT IC	
	Weight [kg]:	10.700
	Notation:	offset
	Employment for:	Sub spindle
	Tool drive:	Flat (~DIN 1809)
	Shank size [mm]:	40.00
	Shank type:	VDI
	Tool adaption:	ER 32 A - u-tec
	Gear ratio [i]:	1:1
	Torque max [Nm]:	50
	Rotation max [1/min]:	6000
	Rotating direction:	same
	Coolant:	IC/Ext
	Pressure max [bar]:	140

QT Nexus 250 M/MS/MY/MSY - 12 Stationen

Part-#	Name	
	Center distance [mm]:	130
8 037 45 006	Woodruff keycutter ER 25 AX	
	Weight [kg]:	8.660
	Tool drive:	Flat (~DIN 1809)
	Shank size [mm]:	40.00
	Shank type:	VDI
	Tool adaption:	ER 25 A
	Gear ratio [i]:	1333:1
	Torque max [Nm]:	32
	Rotation max [1/min]:	4000
	Rotating direction:	opposite
	Coolant:	EXT
8 039 45 019	Radial drilling and milling head ER 25 AX UT	
	Weight [kg]:	9.040
	Employment for:	Main- and sub spindle
	Version:	double spindle
	Tool drive:	Flat (~DIN 1809)
	Shank size [mm]:	40.00
	Shank type:	VDI
	Tool adaption:	ER 25 A - u-tec
	Gear ratio [i]:	1:1
	Torque max [Nm]:	50
	Rotation max [1/min]:	6000
	Rotating direction:	same/opposite
	Coolant:	EXT
	Center distance [mm]:	130
8 039 45 024	Radial drilling and milling head ER 25	
	Weight [kg]:	8.280
	Version:	20° angle
	Tool drive:	Flat (~DIN 1809)
	Shank size [mm]:	40.00
	Shank type:	VDI
	Tool adaption:	ER 25
	Gear ratio [i]:	1:1
	Torque max [Nm]:	50
	Rotation max [1/min]:	6000
	Rotating direction:	opposite
	Coolant:	EXT
8 039 46 042	Radial drilling and milling head ER 32 AX UT	
	Weight [kg]:	9.220
	Employment for:	Main- and sub spindle
	Version:	double spindle
	Tool drive:	Flat (~DIN 1809)
	Shank size [mm]:	40.00
	Shank type:	VDI
	Tool adaption:	ER 32 A - u-tec
	Gear ratio [i]:	1:1
	Torque max [Nm]:	50
	Rotation max [1/min]:	6000
	Rotating direction:	same/opposite
	Coolant:	EXT
	Center distance [mm]:	130

QT Nexus 250 M/MS/MY/MSY - 12 Stationen

Part-#	Name	
8 039 46 046	Radial drilling and milling head ER 32 AX UT	
	Weight [kg]:	11.580
	Notation:	offset
	Employment for:	Main- and sub spindle
	Version:	double spindle
	Tool drive:	Flat (~DIN 1809)
	Shank size [mm]:	40.00
	Shank type:	VDI
	Tool adaption:	ER 32 A - u-tec
	Gear ratio [i]:	1:1
	Torque max [Nm]:	50
	Rotation max [1/min]:	6000
	Rotating direction:	same/opposite
	Coolant:	EXT
	Center distance [mm]:	130
	Offset [mm]:	50
8 039 46 060	Radial drilling and milling head ER 32 AX UT IC	
	Weight [kg]:	10.690
	Version:	360° turnable; special
	Tool drive:	Flat (~DIN 1809)
	Shank size [mm]:	40.00
	Shank type:	VDI
	Tool adaption:	ER 32 A - u-tec
	Gear ratio [i]:	1:1
	Torque max [Nm]:	50
	Rotation max [1/min]:	6000
	Rotating direction:	opposite
	Coolant:	IC/Ext
	Pressure max [bar]:	140
	Center distance [mm]:	130
8 039 46 090	Radial drilling and milling head ER 32 AX UT IC	
	Notation:	offset
	Employment for:	Main- and sub spindle
	Version:	double spindle
	Tool drive:	Flat (~DIN 1809)
	Shank size [mm]:	40.00
	Shank type:	VDI
	Tool adaption:	ER 32 A - u-tec
	Gear ratio [i]:	1:1
	Torque max [Nm]:	50
	Rotation max [1/min]:	6000
	Rotating direction:	same/opposite
	Coolant:	IC/Ext
	Pressure max [bar]:	25
	Center distance [mm]:	130
	Offset [mm]:	50
8 040 44 042	Universal head ± 90° adjustable ER 16 AX UT IC	
	Weight [kg]:	5.260
	Tool drive:	Flat (~DIN 1809)
	Shank size [mm]:	40.00
	Shank type:	VDI
	Tool adaption:	ER 16 A - u-tec
	Gear ratio [i]:	1:2
	Torque max [Nm]:	12
	Rotation max [1/min]:	12000

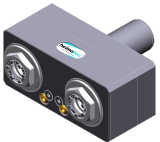
QT Nexus 250 M/MS/MY/MSY - 12 Stationen

Part-#	Name	
	Rotating direction:	opposite
	Coolant:	IC/Ext
	Pressure max [bar]:	140
	Center distance [mm]:	87
8 040 44 043	Universal head ± 90° adjustable ER 16 AX UT	
	Tool drive:	Flat (~DIN 1809)
	Shank size [mm]:	40.00
	Shank type:	VDI
	Tool adaption:	ER 16 A - u-tec
	Gear ratio [i]:	1:2
	Torque max [Nm]:	12
	Rotation max [1/min]:	12000
	Rotating direction:	opposite
	Coolant:	EXT
	Center distance [mm]:	87
8 040 44 044	Universal head ± 90° adjustable ER 16 AX UT	
	Tool drive:	Flat (~DIN 1809)
	Shank size [mm]:	40.00
	Shank type:	VDI
	Tool adaption:	ER 16 A - u-tec
	Gear ratio [i]:	1:1
	Torque max [Nm]:	25
	Rotation max [1/min]:	6000
	Rotating direction:	opposite
	Coolant:	EXT
	Please note:	Note swivel range
	Center distance [mm]:	125
8 040 44 045	Universal head ± 90° adjustable ER 16 AX UT	
	Weight [kg]:	5.220
	Tool drive:	Flat (~DIN 1809)
	Shank size [mm]:	40.00
	Shank type:	VDI
	Tool adaption:	ER 16 A - u-tec
	Gear ratio [i]:	1:1
	Torque max [Nm]:	25
	Rotation max [1/min]:	6000
	Rotating direction:	opposite
	Coolant:	EXT
	Please note:	Note swivel range
	Center distance [mm]:	87
8 040 44 048	Universal head ± 90° adjustable ER 16 AX UT IC	
	Tool drive:	Flat (~DIN 1809)
	Shank size [mm]:	40.00
	Shank type:	VDI
	Tool adaption:	ER 16 A - u-tec
	Gear ratio [i]:	1:1
	Torque max [Nm]:	25
	Rotation max [1/min]:	6000
	Rotating direction:	opposite
	Coolant:	IC/Ext
	Pressure max [bar]:	140
	Center distance [mm]:	87

QT Nexus 250 M/MS/MY/MSY - 12 Stationen

Part-#	Name	
8 040 44 093	Universal head $\pm 90^\circ$ adjustable ER 16 AX UT	
	Tool drive:	Flat (~DIN 1809)
	Shank size [mm]:	40.00
	Shank type:	VDI
	Tool adaption:	ER 16 A - u-tec
	Gear ratio [i]:	1:2
	Torque max [Nm]:	12
	Rotation max [1/min]:	12000
	Rotating direction:	opposite
	Coolant:	EXT
	Please note:	Note swivel range
	Center distance [mm]:	125
8 040 44 094	Universal head $\pm 90^\circ$ adjustable ER 16 AX UT IC	
	Tool drive:	Flat (~DIN 1809)
	Shank size [mm]:	40.00
	Shank type:	VDI
	Tool adaption:	ER 16 A - u-tec
	Gear ratio [i]:	1:2
	Torque max [Nm]:	12
	Rotation max [1/min]:	12000
	Rotating direction:	opposite
	Coolant:	IC/Ext
	Pressure max [bar]:	140
	Please note:	Note swivel range
	Center distance [mm]:	125
8 040 45 056	Universal head $\pm 90^\circ$ adjustable ER 25 AX UT	
	Weight [kg]:	5.500
	Tool drive:	Flat (~DIN 1809)
	Shank size [mm]:	40.00
	Shank type:	VDI
	Tool adaption:	ER 25 A - u-tec
	Gear ratio [i]:	1:1
	Torque max [Nm]:	25
	Rotation max [1/min]:	6000
	Rotating direction:	opposite
	Coolant:	EXT
	Please note:	Note swivel range!
	Center distance [mm]:	87
8 040 45 057	Universal head $\pm 90^\circ$ adjustable ER 25 AX UT	
	Tool drive:	Flat (~DIN 1809)
	Shank size [mm]:	40.00
	Shank type:	VDI
	Tool adaption:	ER 25 A - u-tec
	Gear ratio [i]:	1:1
	Torque max [Nm]:	25
	Rotation max [1/min]:	6000
	Rotating direction:	opposite
	Coolant:	EXT
	Please note:	Note swivel range!
	Center distance [mm]:	125

QT Nexus 250 M/MS/MY/MSY - 12 Stationen

Part-#	Name	
8 040 45 066	Universal head ± 90° adjustable ER 25 AX UT IC	
	Weight [kg]:	5.530
	Tool drive:	Flat (~DIN 1809)
	Shank size [mm]:	40.00
	Shank type:	VDI
	Tool adaption:	ER 25 A - u-tec
	Gear ratio [i]:	1:1
	Torque max [Nm]:	25
	Rotation max [1/min]:	6000
	Rotating direction:	opposite
	Coolant:	IC/Ext
	Pressure max [bar]:	140
	Please note:	Note swivel range!
	Center distance [mm]:	87
8 040 45 106	Universal head ± 90° adjustable ER 25 AX UT IC	
	Tool drive:	Flat (~DIN 1809)
	Shank size [mm]:	40.00
	Shank type:	VDI
	Tool adaption:	ER 25 A - u-tec
	Gear ratio [i]:	1:1
	Torque max [Nm]:	25
	Rotation max [1/min]:	6000
	Rotating direction:	opposite
	Coolant:	IC/Ext
	Pressure max [bar]:	140
	Please note:	Note swivel range!
	Center distance [mm]:	125
8 050 45 026	Multispindle drilling head ER 25 AX UT	
	Employment for:	Main- and sub spindle
	Tool drive:	Flat (~DIN 1809)
	Shank size [mm]:	40.00
	Shank type:	VDI
	Tool adaption:	ER 25 A - u-tec
	Gear ratio [i]:	1:1
	Torque max [Nm]:	50/Sp.
	Rotation max [1/min]:	6000
	Rotating direction:	opposite
	Coolant:	EXT
	Please note:	stronger bearing
	Offset [mm]:	50
8 050 45 030	Multispindle drilling head ER 25 AX UT IC	
	Weight [kg]:	6.730
	Notation:	offset
	Version:	2-spindles
	Tool drive:	Flat (~DIN 1809)
	Shank size [mm]:	40.00
	Shank type:	VDI
	Tool adaption:	ER 25 A - u-tec
	Gear ratio [i]:	1:1
	Torque max [Nm]:	50
	Rotation max [1/min]:	6000
	Rotating direction:	opposite
	Coolant:	IC/Ext
	Pressure max [bar]:	140
	Please note:	stronger bearing; not on benachbarten stations

QT Nexus 250 M/MS/MY/MSY - 12 Stationen

Part-#	Name	
	Offset [mm]:	41,255
8 200 40 004	Tool blank	
	Shank size [mm]:	40.00
	Shank type:	VDI
8 200 41 000	Plug Ø 40x60	
	Weight [kg]:	1.140
	Shank size [mm]:	40.00
	Shank type:	VDI
8 202 40 003	Basic holder for height adjustable adapter	
	Weight [kg]:	3.340
	Shank size [mm]:	40.00
	Shank type:	VDI
	Coolant:	EXT
8 202 40 006	Basic holder longitudinal seat FN 12	
	Weight [kg]:	3.300
	Shank size [mm]:	40.00
	Shank type:	VDI
	Tool adaption:	Interface FN 12
	Coolant:	EXT
8 214 43 004	Cut-off holder SH 32	
	Weight [kg]:	3.480
	Version:	Edge on center of turret
	Shank size [mm]:	40.00
	Shank type:	VDI
	Tool adaption:	Clampshaft SH 32
	Coolant:	EXT
8 214 43 015	Cut-off holder SH 32	
	Weight [kg]:	3.360
	Employment for:	Cut-off tool 32
	Version:	Clampshaft on turret center
	Shank size [mm]:	40.00
	Shank type:	VDI
	Tool adaption:	Clampshaft SH 32
	Coolant:	EXT
	Please note:	demountalbe clampshaft
8 214 43 016	Cut-off holder SH 32	
	Weight [kg]:	3.370
	Employment for:	Cut-off tool 32
	Version:	Clampshaft on turret side
	Shank size [mm]:	40.00
	Shank type:	VDI
	Tool adaption:	Clampshaft SH 32
	Coolant:	EXT
	Please note:	demountalbe clampshaft

QT Nexus 250 M/MS/MY/MSY - 12 Stationen

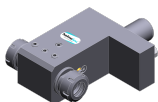
Part-#	Name	
8 214 45 000	Universal turning holder sq. 25	
	Weight [kg]:	6.360
	Shank size [mm]:	40.00
	Shank type:	VDI
	Tool adaption:	Sq. 25
	Coolant:	EXT
8 214 45 001	Universal turning holder sq. 25	
	Weight [kg]:	6.320
	Employment for:	Sub spindle
	Shank size [mm]:	40.00
	Shank type:	VDI
	Tool adaption:	Sq. 25
	Coolant:	EXT
8 214 45 003	Universal turning holder sq. 1"	
	Weight [kg]:	6.380
	Shank size [mm]:	40.00
	Shank type:	VDI
	Tool adaption:	Sq. 1" (25,4mm)
	Coolant:	EXT
8 214 45 016	Universal turning holder sq. 25 IC	
	Weight [kg]:	6.420
	Shank size [mm]:	40.00
	Shank type:	VDI
	Tool adaption:	Sq. 25
	Coolant:	IC/Ext
8 230 44 000	Tool holder HSK - A50	
	Weight [kg]:	10.320
	Shank size [mm]:	40.00
	Shank type:	VDI
	Tool adaption:	DIN 69893 A - HSK 50
	Coolant:	IC/Ext
	Center distance [mm]:	140
8 230 46 026	Collet chuck holder ER 32	
	Weight [kg]:	9.240
	Employment for:	Main spindle
	Shank size [mm]:	40.00
	Shank type:	VDI
	Tool adaption:	ER 32
	Coolant:	IC/Ext
	Center distance [mm]:	140
8 230 47 005	Boring bar holder special version Ø 30	
	Weight [kg]:	9.450
	Version:	Special
	Shank type:	VDI
	Tool adaption:	Ø 30
	Coolant:	EXT
	Center distance [mm]:	125

QT Nexus 250 M/MS/MY/MSY - 12 Stationen

Part-#	Name	
8 230 47 006	Boring bar holder Ø 25	
	Weight [kg]:	9.580
	Shank size [mm]:	40.00
	Shank type:	VDI
	Tool adaption:	Ø 25
	Coolant:	IC/Ext
	Center distance [mm]:	140
8 230 47 015	Tool holder HT 5	
	Weight [kg]:	9.280
	Employment for:	Main spindle
	Shank size [mm]:	40.00
	Shank type:	VDI
	Tool adaption:	HT 5
	Coolant:	IC/Ext
	Center distance [mm]:	140
8 230 48 007	Boring bar holder Ø 32	
	Weight [kg]:	9.360
	Shank size [mm]:	40.00
	Shank type:	VDI
	Tool adaption:	Ø 32
	Coolant:	IC/Ext
	Please note:	Offset dimension to center 71 mm
	Center distance [mm]:	140
8 230 48 025	Boring bar holder Ø 1 1/2"	
	Weight [kg]:	9.100
	Shank size [mm]:	40.00
	Shank type:	VDI
	Tool adaption:	Ø 1 1/2" (38,1mm)
	Coolant:	IC/Ext
	Center distance [mm]:	140
8 230 49 001	Boring bar holder Ø 40	
	Weight [kg]:	9.160
	Shank size [mm]:	40.00
	Shank type:	VDI
	Tool adaption:	Ø 40
	Coolant:	IC/Ext
	Center distance [mm]:	140
8 230 49 006	Boring bar holder Ø 40	
	Weight [kg]:	9.080
	Notation:	offset
	Employment for:	Sub spindle
	Version:	Special
	Shank size [mm]:	40.00
	Shank type:	VDI
	Tool adaption:	Ø 40
	Coolant:	IC/Ext
	Center distance [mm]:	140

QT Nexus 250 M/MS/MY/MSY - 12 Stationen

Part-#	Name	
8 230 49 027	Boring bar holder Ø 50	
	Version:	Special
	Shank size [mm]:	40.00
	Shank type:	VDI
	Tool adaption:	Ø 50
	Coolant:	IC/Ext
	Please note:	Official tool length is exceeded
	Center distance [mm]:	140
8 230 49 054	Boring bar holder Ø 40	
	Weight [kg]:	9.860
	Notation:	offset
	Shank size [mm]:	40.00
	Shank type:	VDI
	Tool adaption:	Ø 40
	Coolant:	IC/Ext
	Please note:	Offset dimension to center 9 mm
	Center distance [mm]:	140
8 234 45 002	Combi facing holder sq. 25	
	Weight [kg]:	10.780
	Employment for:	Main- and sub spindle
	Shank size [mm]:	40.00
	Shank type:	VDI
	Tool adaption:	Sq. 25
	Coolant:	EXT
8 234 45 006	Combi facing holder sq. 25	
	Version:	Special
	Shank size [mm]:	40.00
	Shank type:	VDI
	Tool adaption:	Sq. 25
	Coolant:	EXT
	Please note:	Machine: Mazak, QT Nexus 200 II M - 12
8 239 44 000	Double collet chuck holder ER 20 M	
	Weight [kg]:	9.640
	Employment for:	Main spindle
	Shank size [mm]:	40.00
	Shank type:	VDI
	Tool adaption:	ER 20 M
	Coolant:	IC/Ext
	Center distance [mm]:	126/155
8 239 46 003	Double collet chuck holder ER 32 IC	
	Weight [kg]:	10.200
	Employment for:	Main- and sub spindle
	Shank size [mm]:	40.00
	Shank type:	VDI
	Tool adaption:	ER 32
	Coolant:	IC/Ext
	Center distance [mm]:	140




QT Nexus 250 M/MS/MY/MSY - 12 Stationen

Part-#	Name	
8 239 46 026	Double boring bar holder Ø 20 IC/Ext	
	Weight [kg]:	11.380
	Employment for:	Main- and sub spindle
	Shank size [mm]:	40.00
	Shank type:	VDI
	Tool adaption:	Ø 20
	Coolant:	IC/Ext
	Center distance [mm]:	140
8 239 47 000	Double boring bar holder Ø 25	
	Weight [kg]:	10.920
	Employment for:	Main- and sub spindle
	Shank size [mm]:	40.00
	Shank type:	VDI
	Tool adaption:	Ø 25
	Coolant:	EXT
	Center distance [mm]:	140
8 239 47 001	Double boring bar holder Ø 25 IC/Ext	
	Weight [kg]:	10.800
	Employment for:	Main- and sub spindle
	Shank size [mm]:	40.00
	Shank type:	VDI
	Tool adaption:	Ø 25
	Coolant:	IC/Ext
	Center distance [mm]:	140
8 239 47 002	Double tool holder HT 5	
	Weight [kg]:	9.440
	Employment for:	Main- and sub spindle
	Shank size [mm]:	40.00
	Shank type:	VDI
	Tool adaption:	HT 5
	Coolant:	IC/Ext
	Center distance [mm]:	140
8 239 47 024	Double boring bar holder Ø 1"	
	Weight [kg]:	10.770
	Employment for:	Main- and sub spindle
	Shank size [mm]:	40.00
	Shank type:	VDI
	Tool adaption:	Ø 1" (25,4mm)
	Coolant:	EXT
	Center distance [mm]:	140
8 239 48 002	Double boring bar holder Ø 32	
	Weight [kg]:	11.060
	Employment for:	Main- and sub spindle
	Shank size [mm]:	40.00
	Shank type:	VDI
	Tool adaption:	Ø 32
	Coolant:	EXT
	Center distance [mm]:	140

QT Nexus 250 M/MS/MY/MSY - 12 Stationen

Part-#	Name	
8 239 48 017	Double boring bar holder Ø 32 IC/Ext	
	Weight [kg]:	11.050
	Employment for:	Main- and sub spindle
	Shank size [mm]:	40.00
	Shank type:	VDI
	Tool adaption:	Ø 32
	Coolant:	IC/Ext
	Center distance [mm]:	140
8 239 49 000	Double boring bar holder Ø 40	
	Weight [kg]:	9.160
	Employment for:	Main- and sub spindle
	Shank size [mm]:	40.00
	Shank type:	VDI
	Tool adaption:	Ø 40
	Coolant:	EXT
	Center distance [mm]:	140
8 239 49 018	Double boring bar holder Ø 40 IC/Ext	
	Weight [kg]:	10.650
	Employment for:	Main- and sub spindle
	Shank size [mm]:	40.00
	Shank type:	VDI
	Tool adaption:	Ø 40
	Coolant:	IC/Ext
	Center distance [mm]:	140
8 251 45 000	Combi double turning holder sq. 25	
	Weight [kg]:	10.400
	Shank size [mm]:	40.00
	Shank type:	VDI
	Tool adaption:	Sq. 25
	Coolant:	EXT
8 251 45 014	Combi double turning holder sq. 25 IC	
	Weight [kg]:	10.130
	Shank size [mm]:	40.00
	Shank type:	VDI
	Tool adaption:	Sq. 25
	Coolant:	IC/Ext
8 253 47 005	Double boring bar holder Ø 25	
	Weight [kg]:	10.700
	Employment for:	Main- and sub spindle
	Shank size [mm]:	40.00
	Shank type:	VDI
	Tool adaption:	Ø 25
	Coolant:	EXT
	Center distance [mm]:	105/148
8 253 47 007	Double boring bar holder Ø 1"	
	Weight [kg]:	10.700
	Employment for:	Main- and sub spindle
	Shank size [mm]:	40.00
	Shank type:	VDI
	Tool adaption:	Ø 1" (25,4mm)
	Coolant:	EXT

QT Nexus 250 M/MS/MY/MSY - 12 Stationen

Part-#	Name	
	Center distance [mm]:	105/148
8 259 42 000	Multiple turning holder sq. 25	
	Weight [kg]:	7.020
	Employment for:	Main spindle
	Version:	Y-axes offset
	Shank size [mm]:	40.00
	Shank type:	VDI
	Tool adaption:	Sq. 25
		Sq. 25
	Coolant:	EXT
8 259 45 001	Multiple turning holder 4x sq. 25	
	Weight [kg]:	10.950
	Employment for:	Main- and sub spindle
	Version:	Y-axes offset
	Shank size [mm]:	40.00
	Shank type:	VDI
	Tool adaption:	Sq. 25
		Sq. 25
		Sq. 25
		Sq. 25
	Coolant:	EXT
8 259 45 005	Multiple turning holder 4x sq. 1"	
	Weight [kg]:	10.930
	Employment for:	Main- and sub spindle
	Version:	Y-axes offset
	Shank size [mm]:	40.00
	Shank type:	VDI
	Tool adaption:	Sq. 1" (25,4mm)
		Sq. 1" (25,4mm)
		Sq. 1" (25,4mm)
		Sq. 1" (25,4mm)
	Coolant:	EXT
8 259 45 009	Multiple turning holder 4x sq. 25 IC	
	Weight [kg]:	10.600
	Employment for:	Main- and sub spindle
	Version:	Y-axes offset
	Shank size [mm]:	40.00
	Shank type:	VDI
	Tool adaption:	Sq. 25
		Sq. 25
		Sq. 25
		Sq. 25
	Coolant:	IC/Ext
8 320 43 008	Cut-off holder, height adjustable SH 32 IC	
	Weight [kg]:	3.930
	Shank size [mm]:	40.00
	Shank type:	VDI
	Tool adaption:	Clampshaft SH 32
	Coolant:	IC/Ext
	Pressure max [bar]:	70



● heimatec overseas branches

○ global representations of heimatec

heimatec[®]

heimatec GmbH
Präzisionswerkzeuge
Carl-Benz-Str. 4
77871 Renchen
Germany

T +49 7843 9466 0
www.heimatec.com
info@heimatec.com

Please find the contact details of our worldwide trading partners on our website:
<https://heimatec.com/business-partners>