

**TOPSELLER -**  
many more available!

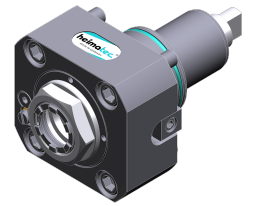
Live Tools

**heimatec**®

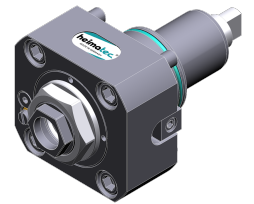
# Doosan Puma 3100 BMT 65

Part-#	Tool adaption	Rotation max [1/min]	Gear ratio	Coolant	Pressure max.	Center distance
<b>Axial drilling and milling head</b>						
8 010 66 143	<b>ER 32 A - u-tec</b>	12.000	1:1	IC/Ext	100 bar	--
8 010 66 144	<b>ER 32 A - u-tec</b>	12.000	1:1	IC/Ext	25 bar	--
8 010 66 145	<b>ER 32 A - u-tec</b>	12.000	1:1	EXT	140 bar	--
<b>Radial drilling and milling head</b>						
8 030 65 055	<b>ER 25 A - u-tec</b>	12.000	1:2	EXT	--	<b>95 mm</b>
8 030 66 269	<b>ER 32 A - u-tec</b>	10.000	1:1	EXT	--	<b>100 mm</b>
8 030 66 270	<b>ER 32 A - u-tec</b>	10.000	1:1	IC/Ext	140 bar	<b>100 mm</b>
<b>Radial drilling and milling head, double spindle</b>						
8 039 66 021	<b>ER 32 A - u-tec</b>	10.000	1:1	EXT	--	<b>100 mm</b>
<b>Universal head, offset</b>						
8 043 65 000	<b>ER 25 A - u-tec</b>	6.000	1:1	EXT	--	<b>69 mm</b>
8 043 65 004	<b>ER 25 A - u-tec</b>	6.000	1:1	IC/Ext	140 bar	<b>69 mm</b>

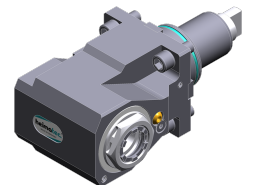
Illustrations similar.



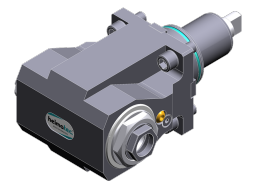
8 010 66 143



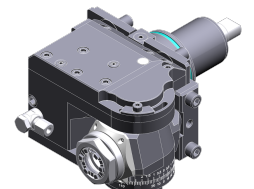
8 010 66 144



8 030 66 269



8 039 66 021



8 043 65 000

**TOPSELLER -**  
many more available!

Static Tools

**heimatec**®

# Doosan

## Puma 3100 BMT 65

Part-#	Tool adaption	Coolant	Pressure max.	Center distance
<b>Universal turning holder</b>				
8 224 15 005	<b>Sq. 25</b>	EXT	80 bar	--
8 224 15 006	<b>Sq. 25</b>	EXT	80 bar	--
8 224 15 052	<b>Sq. 25</b>	IC/Ext	100 bar	--
8 224 15 053	<b>Sq. 25</b>	IC/Ext	100 bar	--
<b>Boring bar holder</b>				
8 240 17 050	<b>Ø 25</b>	IC/Ext	80 bar	<b>100 mm</b>
8 240 18 049	<b>Ø 32</b>	IC/Ext	80 bar	<b>100 mm</b>
8 240 19 043	<b>Ø 40</b>	IC/Ext	80 bar	<b>100 mm</b>
8 240 19 051	<b>Ø 50</b>	IC/Ext	80 bar	<b>100 mm</b>
<b>Combi facing holder</b>				
8 244 15 005	<b>Sq. 25</b>	EXT	80 bar	--
<b>Double turning holder</b>				
8 251 15 003	<b>Sq. 25</b>	EXT	80 bar	--
8 251 15 046	<b>Sq. 25</b>	IC/Ext	100 bar	--
<b>Cut-off holder, height adjustable</b>				
8 320 13 005	<b>Clampshaft SH 32</b>	IC/Ext	70 bar	--

Illustrations similar.



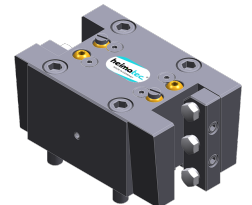
8 224 15 005



8 240 17 050



8 244 15 005



8 251 15 003